

# 614 KING STREET

2,838 - 28,122 RSF AVAILABLE





## SITE DETAILS

- Unique large block with over 48' of frontage along King Street and over 50' of frontage along S. Washington Street (32,000 VPD)
- Up to 13,877 SF available on King Street connecting to 14,245 SF in the lower level
- Total 28,122 SF available
- 16' ceiling heights on the ground floor and 12' ceiling heights in the lower level
- Available immediately

## JOIN



FOX TROT

swēetgreen



bluemercury  
makeup • skincare • spa



jenie's

ANTHROPOLOGIE

WARBY PARKER

SEPHORA

## DEMOGRAPHICS: 2023

	.25 MILE	.5 MILE	1 MILE
Average HH Income	\$263,972	\$241,180	\$211,364
Population	1,924	9,906	28,340
Daytime Population	9,218	22,878	55,555
Retail Goods Spending	\$63,367,746	\$302,833,760	\$817,477,764

2 | 614 KING STREET

## NEIGHBORHOOD FACTS



KING STREET TROLLY  
**50,000**  
RIDERS PER MONTH

**61,000 VPD**   
WASHINGTON & KING STREET



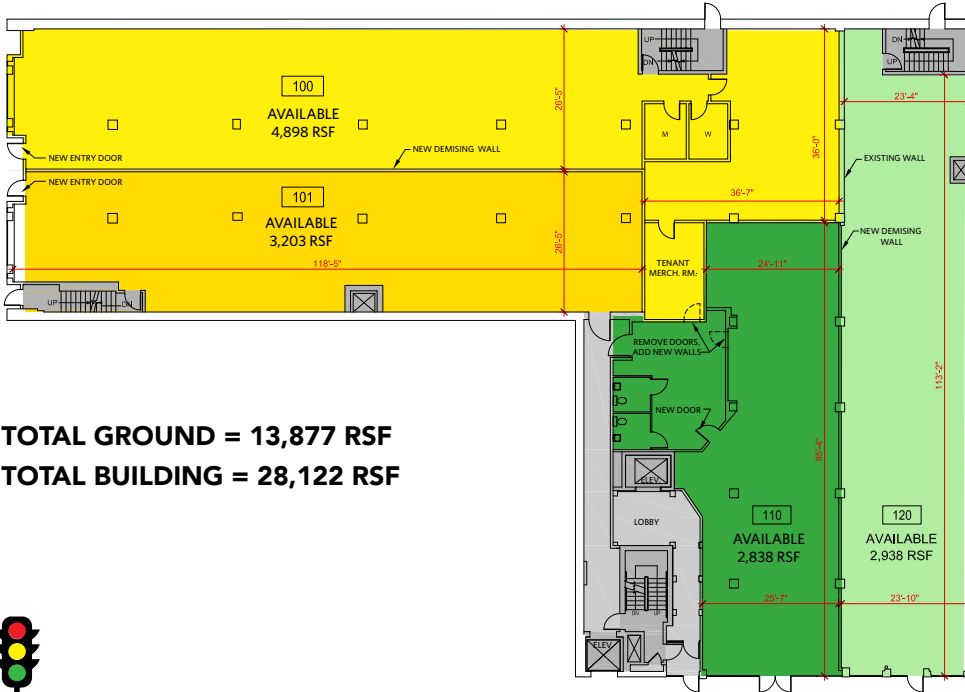
WALK SCORE  
**92**

kl**nb**

# 614 KING STREET

Ground Floor

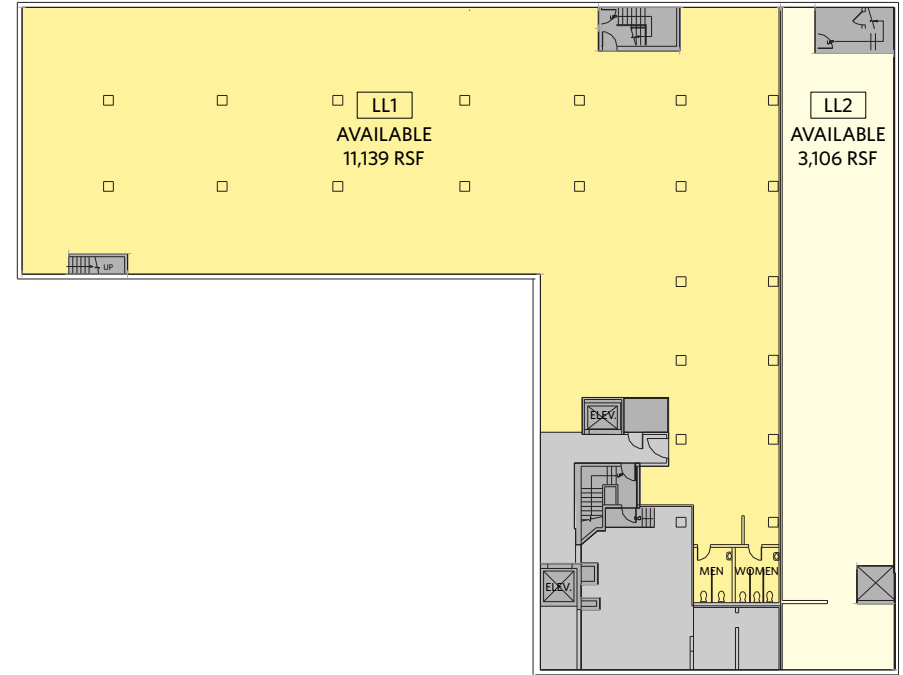
KING STREET



**TOTAL GROUND = 13,877 RSF**  
**TOTAL BUILDING = 28,122 RSF**



Lower Level



## S WASHINGTON STREET

### 614 KING STREET

- 100** 4,898 RSF On Ground Floor
  - 101** 3,203 RSF On Ground Floor
  - LL1** 11,139 RSF On Lower Level
  - LL2** 3,106 RSF On Lower Level
- Can be combined: **8,101 RSF**
- Can be combined: **14,245 RSF**

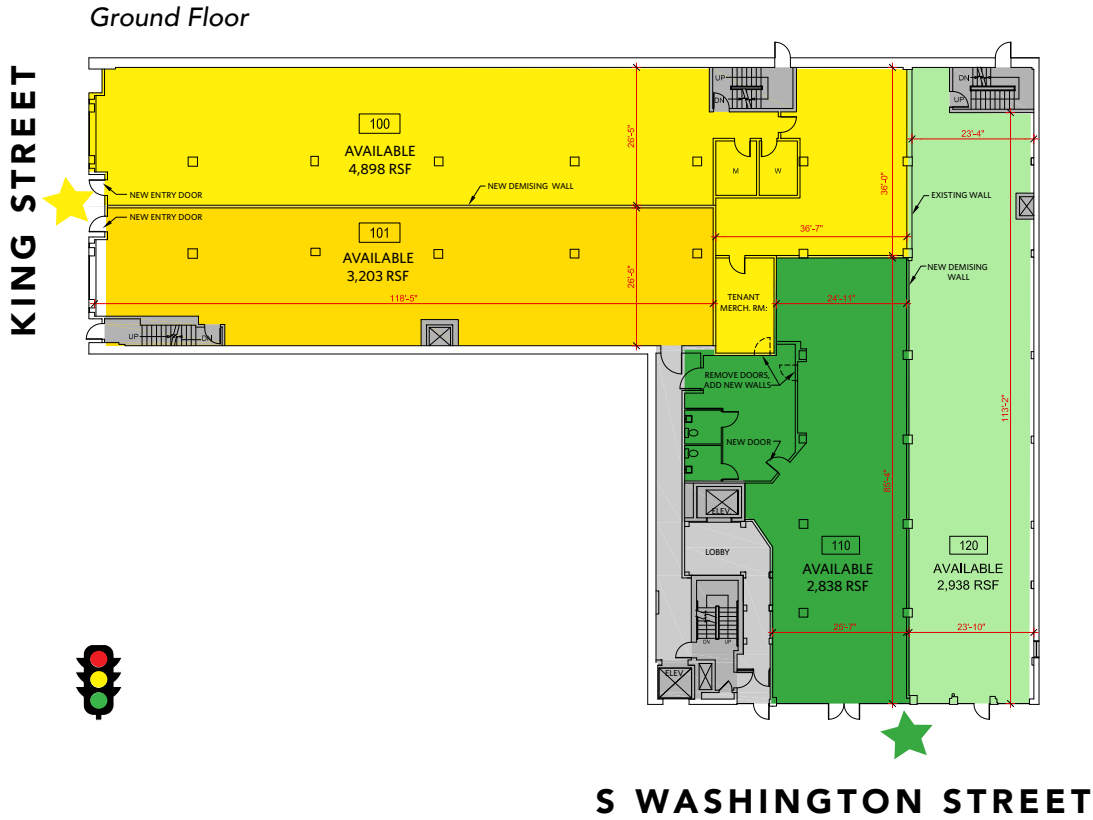
### 110 S. WASHINGTON STREET

- 110** 2,838 RSF On Ground Floor
  - 120** 2,938 RSF On Ground Floor
- Can be combined: **5,776 RSF**

- 100** 4,898 RSF On Ground Floor
  - 101** 3,203 RSF On Ground Floor
  - LL1** 11,139 RSF On Lower Level
- Can be combined: **19,240 RSF**

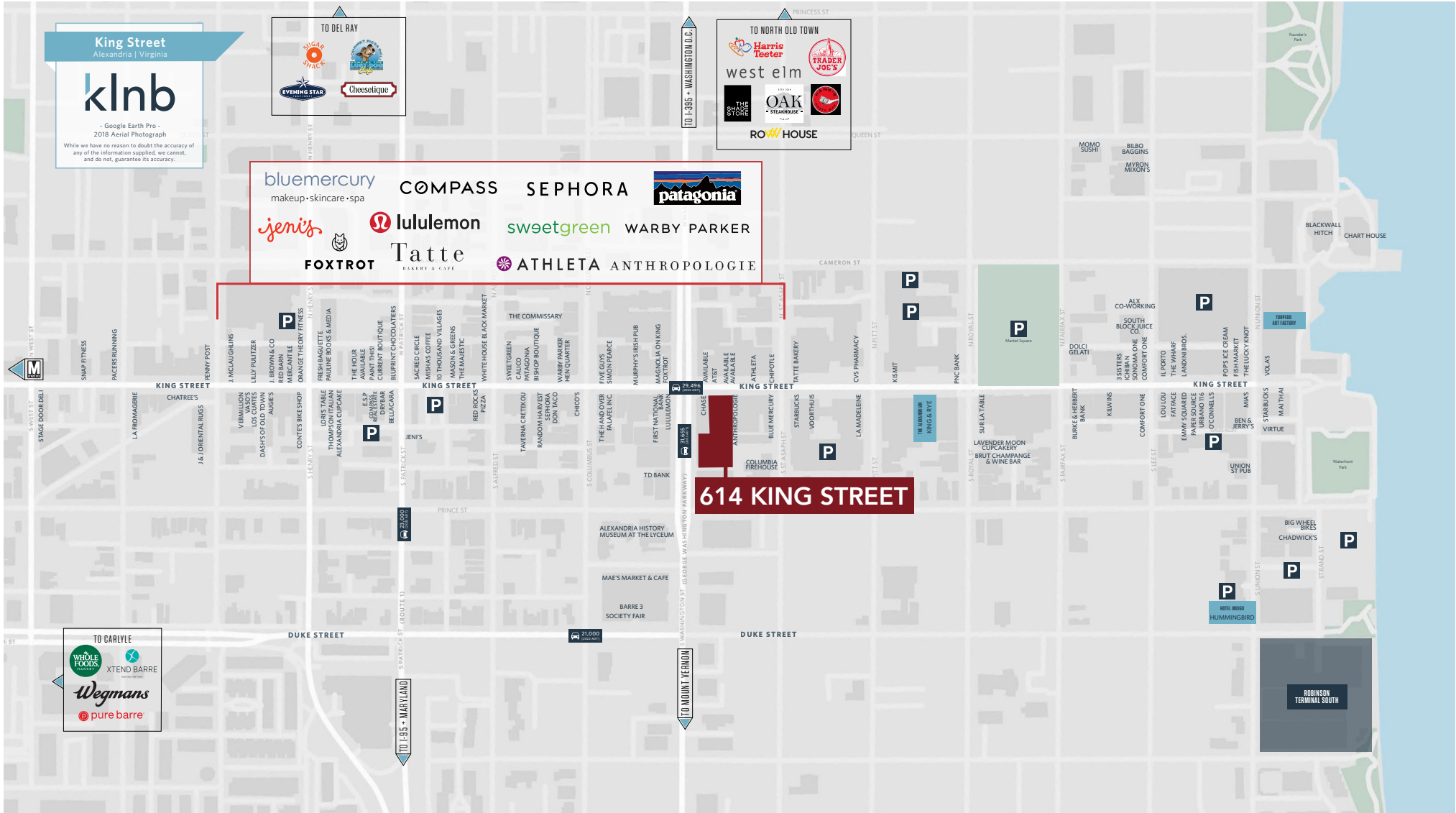
- 100** 4,898 RSF On Ground Floor
  - 101** 3,203 RSF On Ground Floor
  - LL2** 3,106 RSF On Lower Level
- Can be combined: **11,207 RSF**

# 614 KING STREET



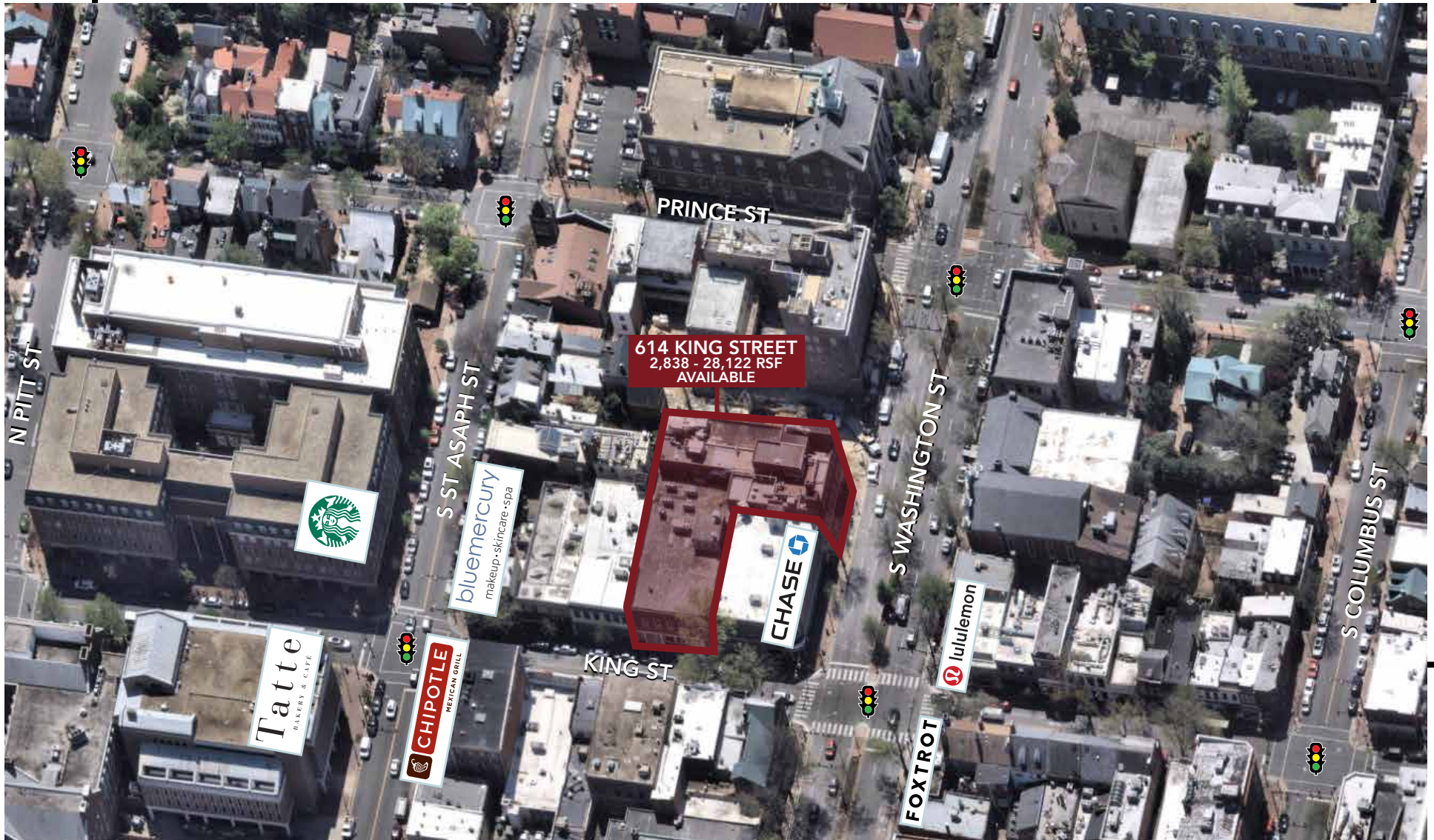
# 614 KING STREET

## MARKET MAP



# 614 KING STREET

2,838 - 28,122 RSF AVAILABLE



klnb

While we have no reason to doubt the accuracy of any of the information supplied, we cannot, and do not, guarantee its accuracy. All information should be independently verified prior to a purchase or lease of the property. We are not responsible for errors, omissions, misuse, or misinterpretation of information contained herein and make no warranty of any kind, express or implied, with respect to the property or any other matters.

Kim Stein  
202.652.2338  
kstein@klnb.com

Jason Flippo  
202.688.3751  
jflippo@klnb.com

Jenn Price  
202.420.7768  
jprice@klnb.com