



## PROPERTY HIGHLIGHTS

- Year Built: 1988
- Building Height: 3 Stories
- Building Size: 55,422 SF
- Building Class: B
- Parking: 160 Surface

Tech Center 29 is located in eastern Montgomery County with easy access to I-95 and I-495. The property has excellent visibility from Route 29 with attractive landscaping and high window ratio. Constructed in 1988, the property sits on 12.95 acres and offers large floor sizes with compact core, large column spacing, 9 foot ceiling heights and 2 recessed, full height loading docks.

**KENNETH FELLOWS**

kfellows@klnb.com | 301-222-0210

**ROBERT PUGH**

rpugh@klnb.com | 301-222-0211

**KEIRY MARTINEZ**

kmartinez@klnb.com | 703-334-5629

**klnb.com**



# MARKET

## TECH CENTER 29

12200 TECH ROAD, SILVER SPRING, MD 20904



KENNETH FELLOWS

kfellows@klnb.com | 301-222-0210

ROBERT PUGH

rpugh@klnb.com | 301-222-0211

KEIRY MARTINEZ

kmartinez@klnb.com | 703-334-5629

klnb



# CLOSE-UP

## TECH CENTER 29

12200 TECH ROAD, SILVER SPRING, MD 20904



**KENNETH FELLOWS**

kfellows@klnb.com | 301-222-0210

**ROBERT PUGH**

rpugh@klnb.com | 301-222-0211

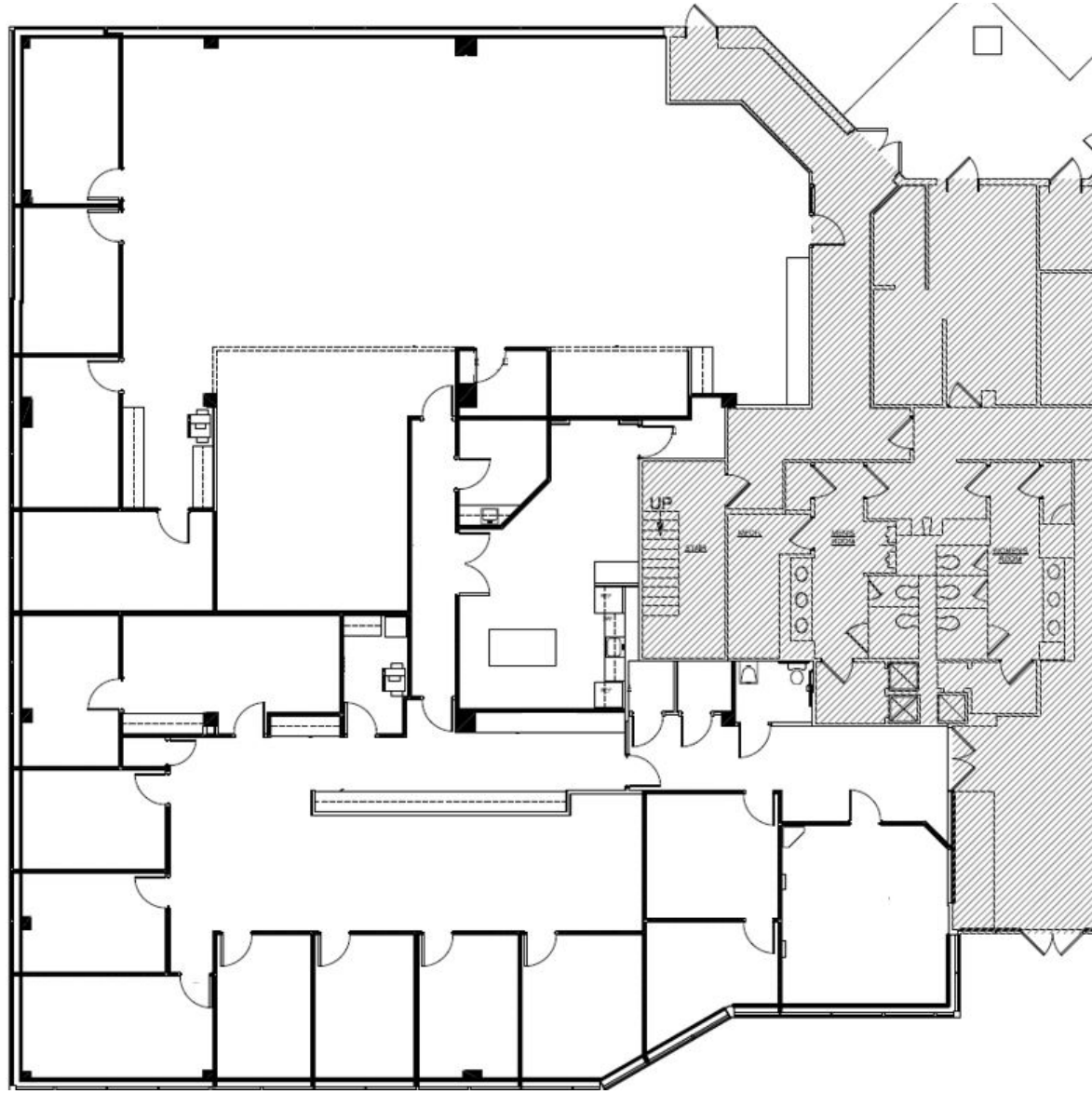
**KEIRY MARTINEZ**

kmartinez@klnb.com | 703-334-5629

**klnb**



**SUITE 100**  
**8,600 SF**



**KENNETH FELLOWS**

kfellows@klnb.com | 301-222-0210

**ROBERT PUGH**

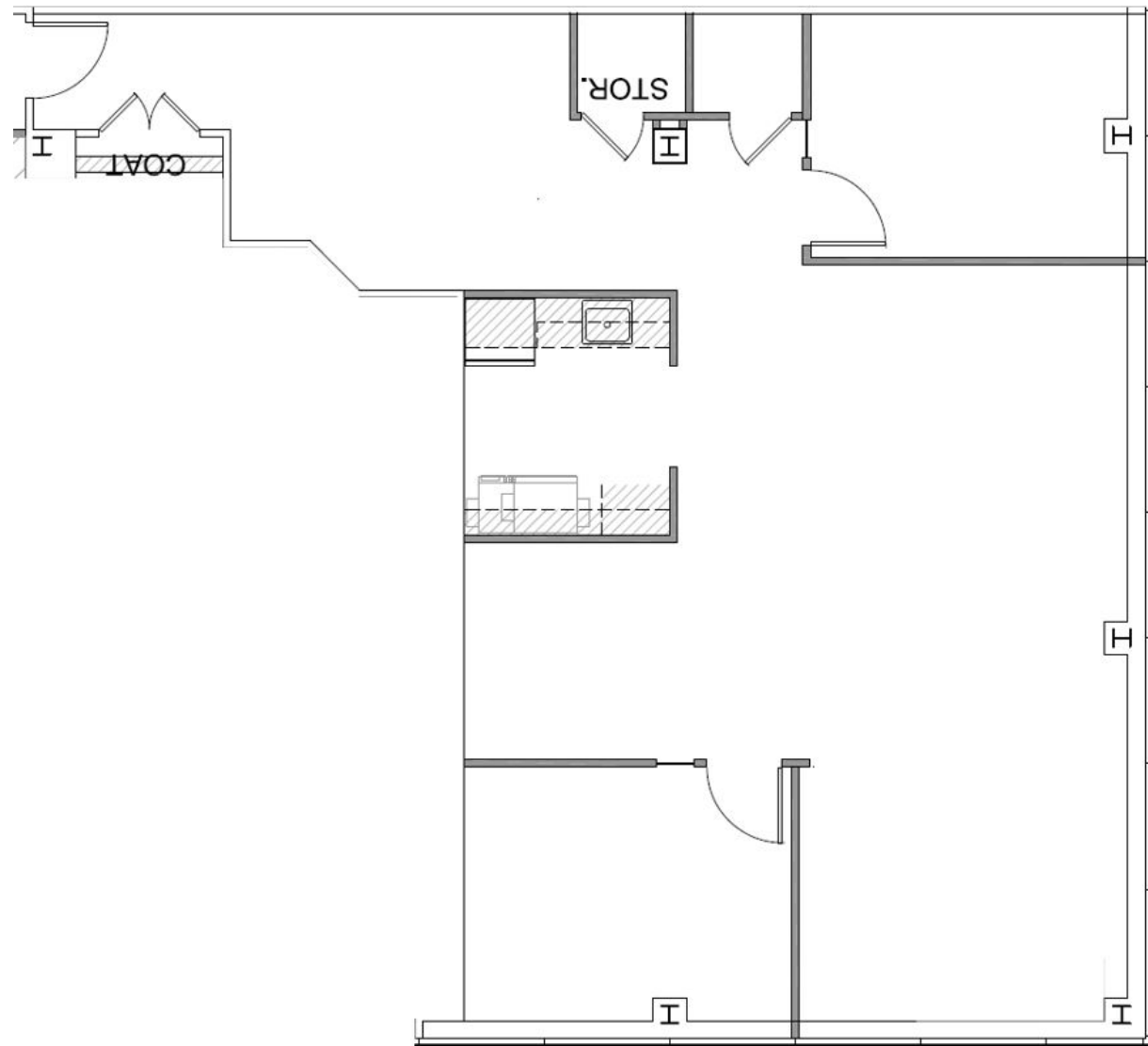
rpugh@klnb.com | 301-222-0211

**KEIRY MARTINEZ**

kmartinez@klnb.com | 703-334-5629

### SUITE 340

**1,467 SF** SPEC SUITE





# TECH CENTER 29

12200 TECH ROAD, SILVER SPRING, MD 20904

## FOR MORE INFORMATION, PLEASE CONTACT:

### KENNETH FELLOWS

kfellows@klnb.com  
301-222-0210

### ROBERT PUGH

rpugh@klnb.com  
301-222-0211

### KEIRY MARTINEZ

kmartinez@klnb.com  
703-334-5629

2273 Research Boulevard, Suite 150, Rockville, MD 20850

.....

## klnb.com

 facebook.com/KLNBCRE

 @KLNBCRE

 linkedin.com/company/klnb

 instagram.com/klnbcre

While we have no reason to doubt the accuracy of any of the information supplied, we cannot, and do not, guarantee its accuracy. All information should be independently verified prior to a purchase or lease of the property. We are not responsible for errors, omissions, misuse, or misinterpretation of information contained herein and make no warranty of any kind, express or implied, with respect to the property or any other matters.