



AVAILABILITY

- Office/Warehouse - 34,567 SF
 - 1st Floor: 28,086 SF
 - 2nd Floor Mezzanine: 6,481 SF

FEATURES

- I-5 Zoning
- Ceiling Height 24' clear
- 42 dedicated parking spaces
- 8 loading docks
- 2 ramped drive-ins
- Private elevator access to mezzanine
- Prime location with easy access to Route 50 & Route 28
- Close proximity to Dulles Airport

3931 AVION PARK COURT

CHANTILLY, VIRGINIA 20151

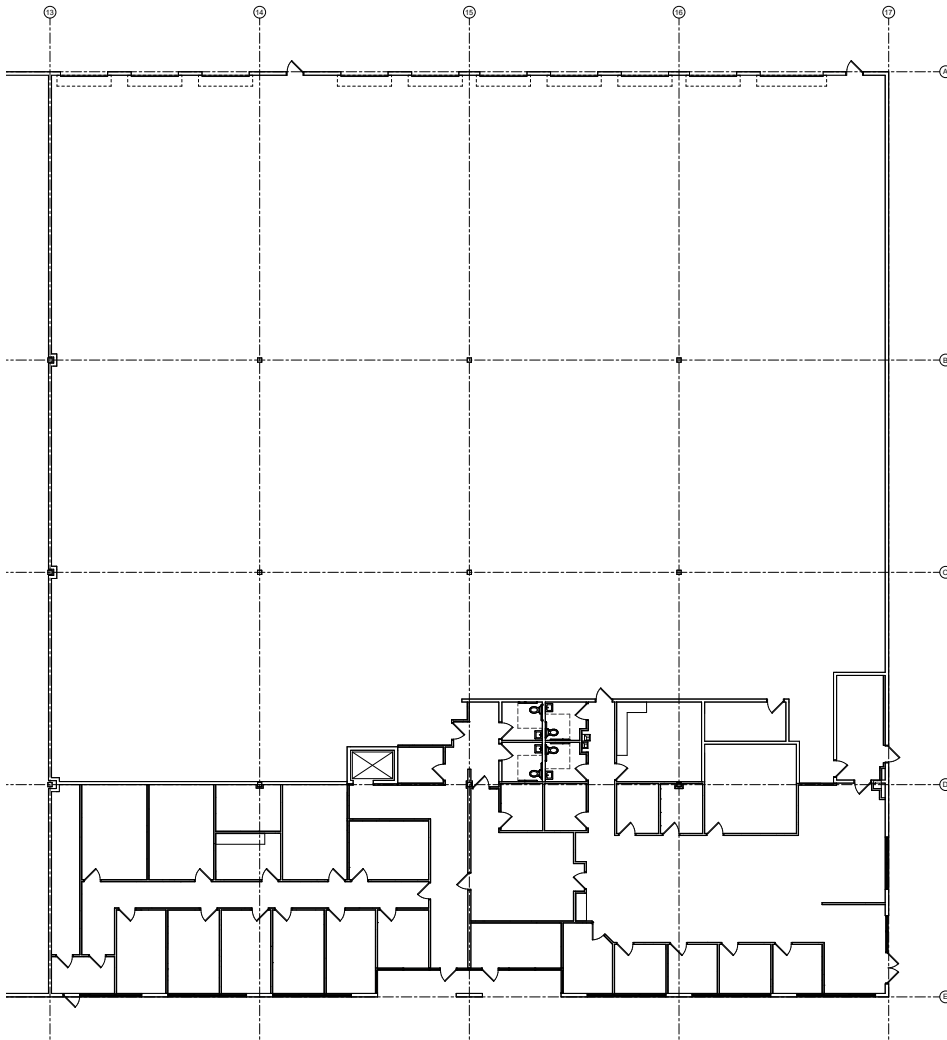


FLOOR PLAN

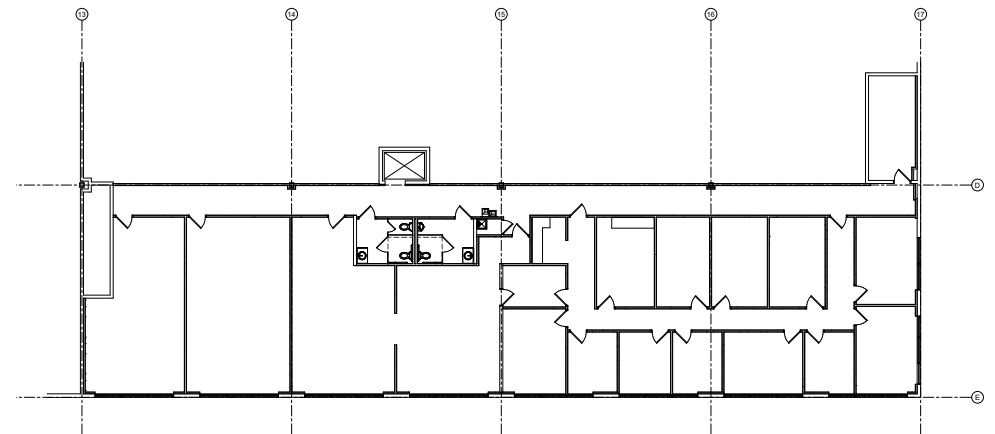
3931 AVION PARK COURT

CHANTILLY, VIRGINIA 20151

FIRST FLOOR



SECOND FLOOR MEZZANINE



SCOTT D. RABIN

srabin@klnb.com | 703-334-5610

klnb



3931 AVION PARK COURT

CHANTILLY, VIRGINIA 20151

FOR MORE INFORMATION, PLEASE CONTACT:

SCOTT D. RABIN

srabin@klnb.com

703-334-5610

8065 Leesburg Pike, Suite 700, Tysons, VA 22182

.....
klnb.com

 facebook.com/KLNBCRE

 [@KLNBCRE](https://twitter.com/KLNBCRE)

 linkedin.com/company/klnb

 instagram.com/klnbcre

CLICK TO VIEW PROPERTY WEBSITE

While we have no reason to doubt the accuracy of any of the information supplied, we cannot, and do not, guarantee its accuracy. All information should be independently verified prior to a purchase or lease of the property. We are not responsible for errors, omissions, misuse, or misinterpretation of information contained herein and make no warranty of any kind, express or implied, with respect to the property or any other matters.