



BUILDING NOTES

- Freestanding 14,000 SF, 2 story building
- Situated on .95 acres
- Ideal single user building
- Flexible C-1 zoning (Fairfax County)
- Well suited for Day Care, Schools and Medical Users
- 50+ on site parking spaces

PROXIMITY

- I-66 2.7 mi.
- I-495 1.6 mi.
- Dulless Toll Rd 1.8 mi.
- Tysons Corner Center & Metro Station. . . . 1.2 mi.

MARKET

1912 WOODFORD ROAD

VIENNA, VIRGINIA 22182

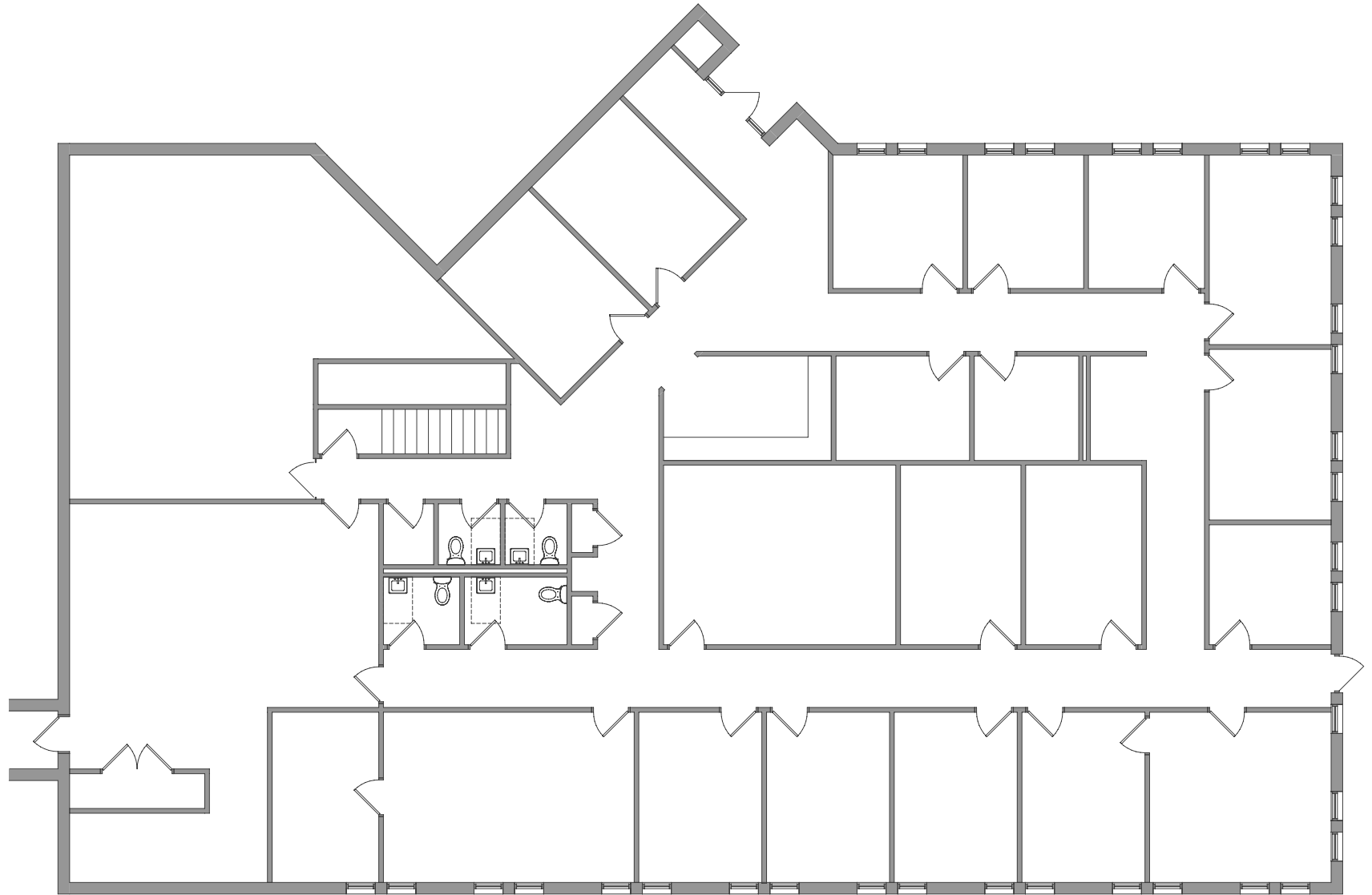


FLOOR PLAN

1912 WOODFORD ROAD

VIENNA, VIRGINIA 22182

1ST FLOOR



SCOTT D. RABIN

srabin@klnb.com | 703-334-5610

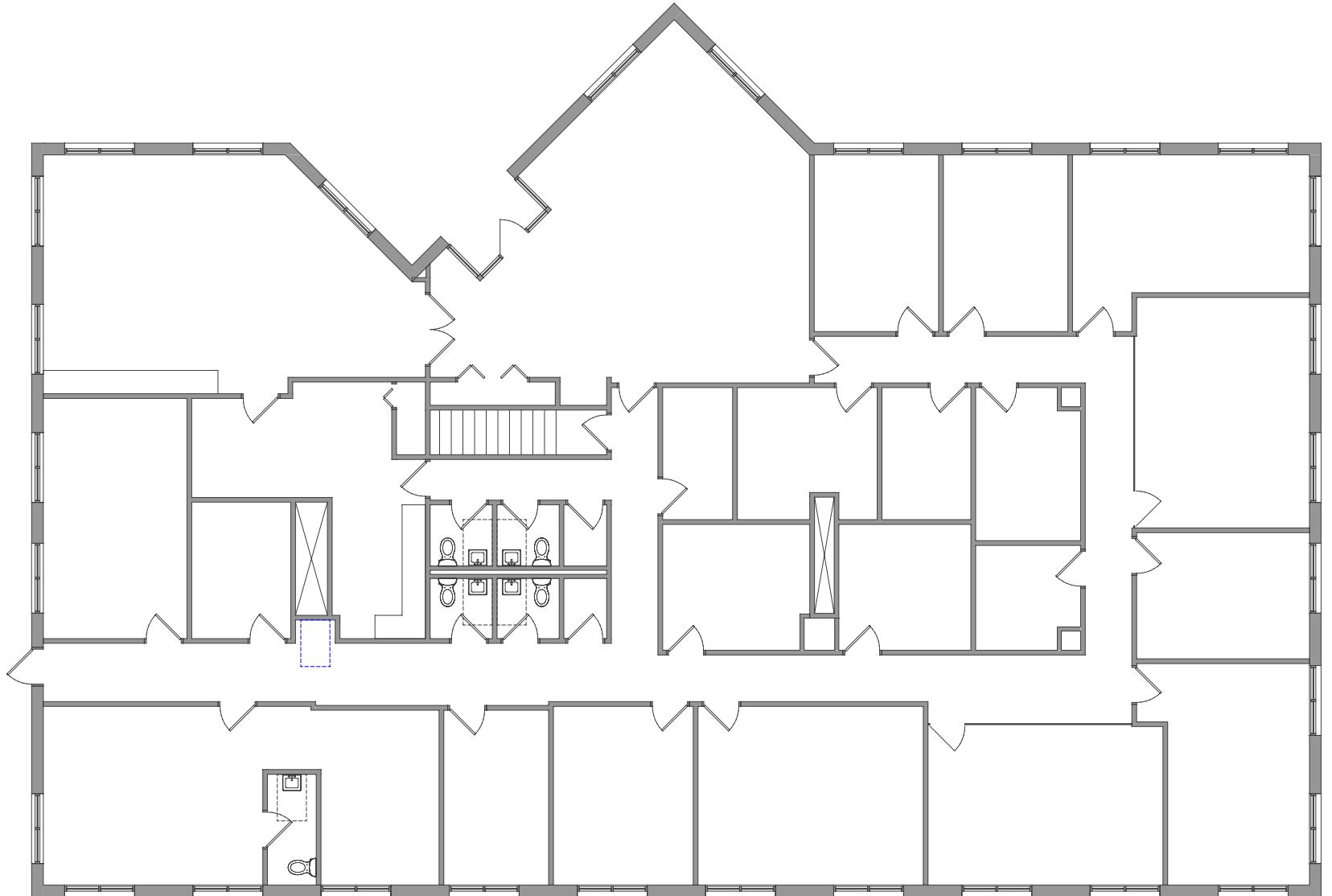


FLOOR PLAN

1912 WOODFORD ROAD

VIENNA, VIRGINIA 22182

2ND FLOOR



SCOTT D. RABIN

srabin@klnb.com | 703-334-5610





1912 WOODFORD ROAD

VIENNA, VIRGINIA 22182

FOR MORE INFORMATION, PLEASE CONTACT:

SCOTT D. RABIN

srabin@klnb.com

703-334-5610

8065 Leesburg Pike, Suite 700, Tysons, VA 22182

.....

klnb.com

 facebook.com/KLNBCRE

 [@KLNBCRE](https://twitter.com/KLNBCRE)

 linkedin.com/company/klnb

 instagram.com/klnbcre

CLICK TO VIEW PROPERTY WEBSITE

While we have no reason to doubt the accuracy of any of the information supplied, we cannot, and do not, guarantee its accuracy. All information should be independently verified prior to a purchase or lease of the property. We are not responsible for errors, omissions, misuse, or misinterpretation of information contained herein and make no warranty of any kind, express or implied, with respect to the property or any other matters.