



NEARBY RETAILERS



RETAIL FOR SALE

- 7,834 SF fully fixtured restaurant for sale
- Located at signalized intersection of Solomons Island Road (25,959 AADT) and Dowell Road (2,765 AADT)
- 2.48 acres total available
- Zoned TC

BO GALLES

bgalles@klnb.com | 703-268-2712

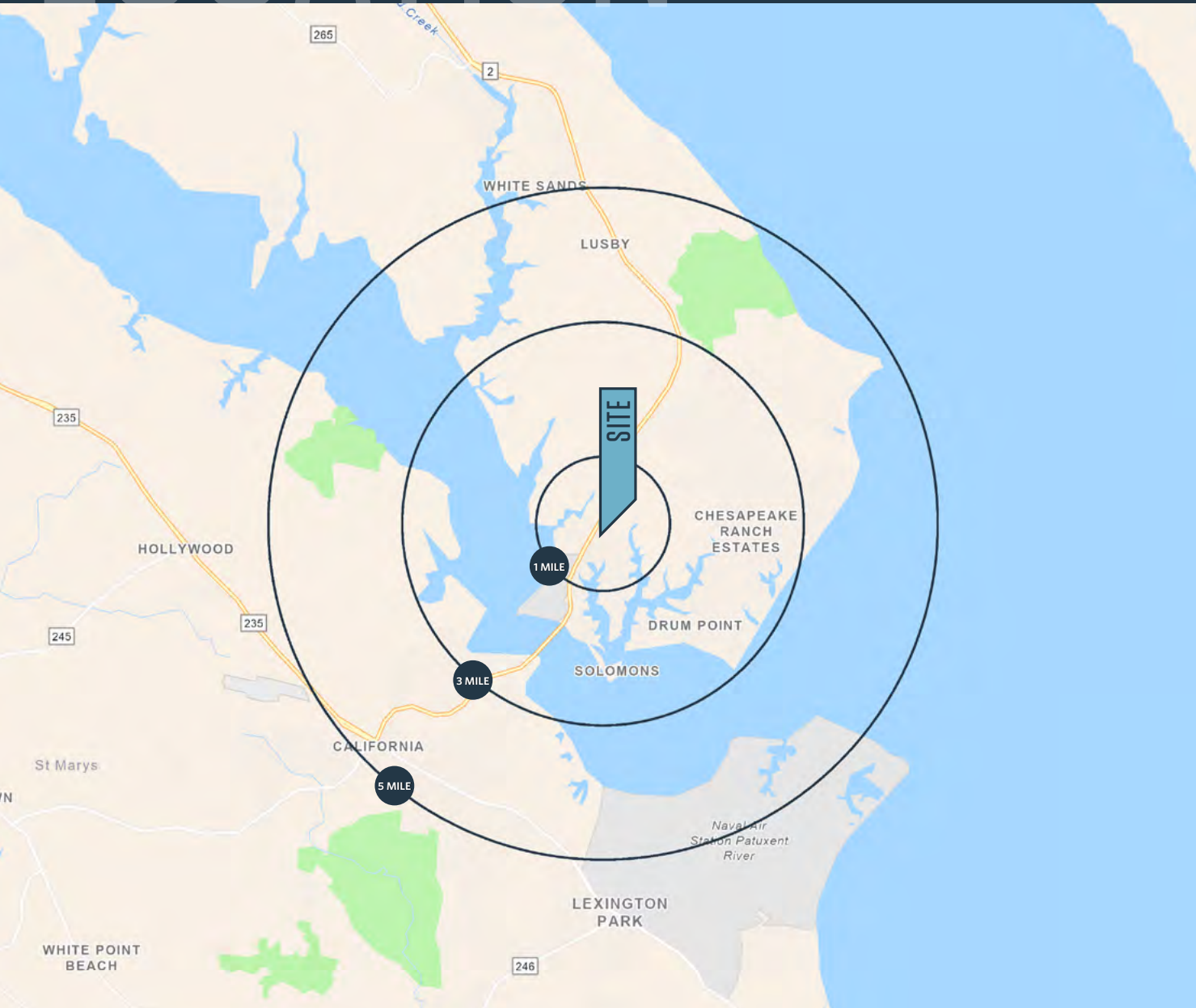
JOSH WEINER

jweiner@klnb.com | 703-268-2715

LOCATION

13200 DOWELL ROAD

DOWELL, MARYLAND 20629, CALVERT COUNTY



DEMOGRAPHICS | 2023:

1-MILE	3-MILE	5-MILE
Population		
2,649	17,641	32,426
Daytime Population		
2,771	14,855	31,249
Households		
1,174	6,809	12,333
Average HH Income		
\$156,843	\$147,516	\$151,335

[CLICK TO DOWNLOAD DEMOGRAPHIC REPORT](#)

TRAFFIC COUNTS | 2022:

Solomons Island Rd	25,959 ADT
Dowell Rd	2,765 ADT
HG Trueman Rd	8,115 ADT

BO GALLES

bgalles@klnb.com | 703-268-2712

JOSH WEINER

jweiner@klnb.com | 703-268-2715



MARKET

13200 DOWELL ROAD

DOWELL, MARYLAND 20629, CALVERT COUNTY



BO GALLES

bgalles@klnb.com | 703-268-2712

JOSH WEINER

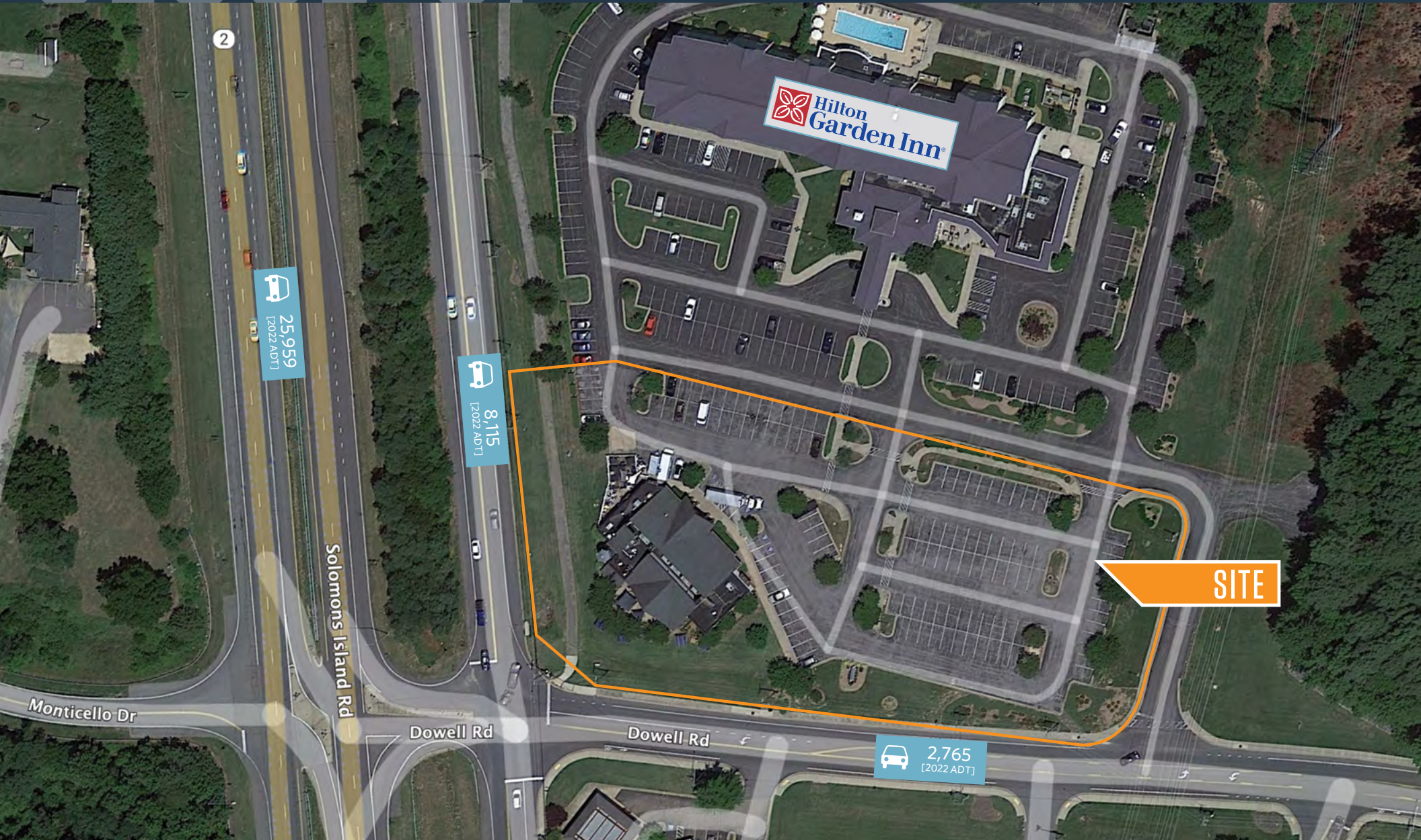
jweiner@klnb.com | 703-268-2715

klnb

CLOSE-UP

13200 DOWELL ROAD

DOWELL, MARYLAND 20629, CALVERT COUNTY



BO GALLES

bgalles@klnb.com | 703-268-2712

JOSH WEINER

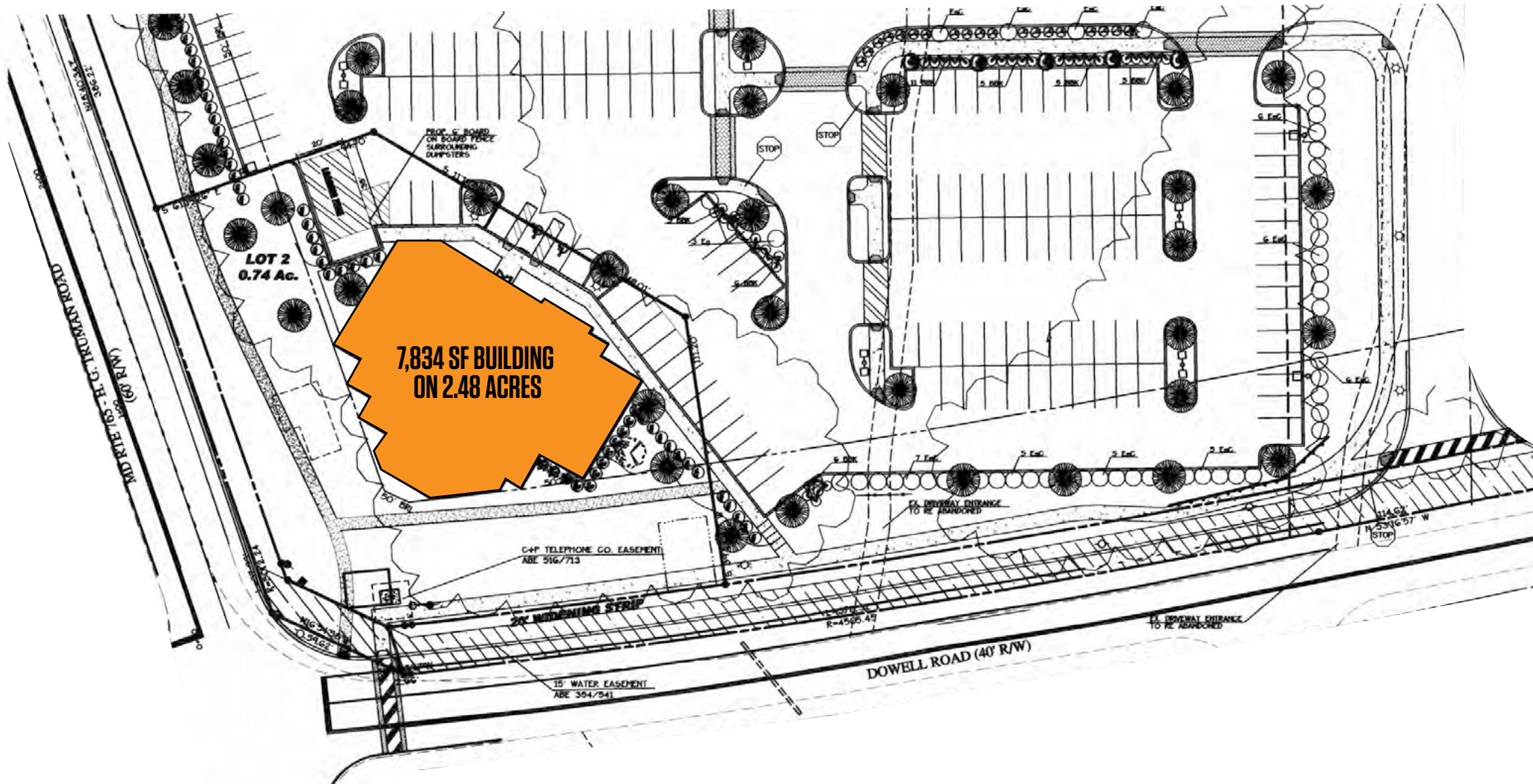
jweiner@klnb.com | 703-268-2715



SITE PLAN

13200 DOWELL ROAD

DOWELL, MARYLAND 20629, CALVERT COUNTY



BO GALLES

bgalles@klnb.com | 703-268-2712

JOSH WEINER

jweiner@klnb.com | 703-268-2715





13200 DOWELL ROAD

DOWELL, MARYLAND 20629, CALVERT COUNTY

FOR MORE INFORMATION, PLEASE CONTACT:

BO GALLES

bgalles@klnb.com

703-268-2712

JOSH WEINER

jweiner@klnb.com

703-268-2715

8065 Leesburg Pike, Suite 700, Tysons, VA 22182

.....

klnb.com

 facebook.com/KLNBCRE

 [@KLNBCRE](https://twitter.com/KLNBCRE)

 linkedin.com/company/klnb

 instagram.com/klnbcre

[CLICK TO VIEW PROPERTY WEBSITE](#)

While we have no reason to doubt the accuracy of any of the information supplied, we cannot, and do not, guarantee its accuracy. All information should be independently verified prior to a purchase or lease of the property. We are not responsible for errors, omissions, misuse, or misinterpretation of information contained herein and make no warranty of any kind, express or implied, with respect to the property or any other matters.