

NEARBY RETAILERS



RETAIL FOR LEASE

- Pad Site available at signalized intersection.
- Located at corner of Key Highway (16,385 ADT) and Jackson Street.
- Located in Federal Hill with easy access to the Inner Harbor and Locust Point Community.
- Less than 1 mile I-95 exit.
- Zoning C-2 ([Link to Zoning](#))

RACHEL KLEIN

rklein@klnb.com | 443-632-2087

MICHAEL GINSBURG

mginsburg@klnb.com | 443-632-2041

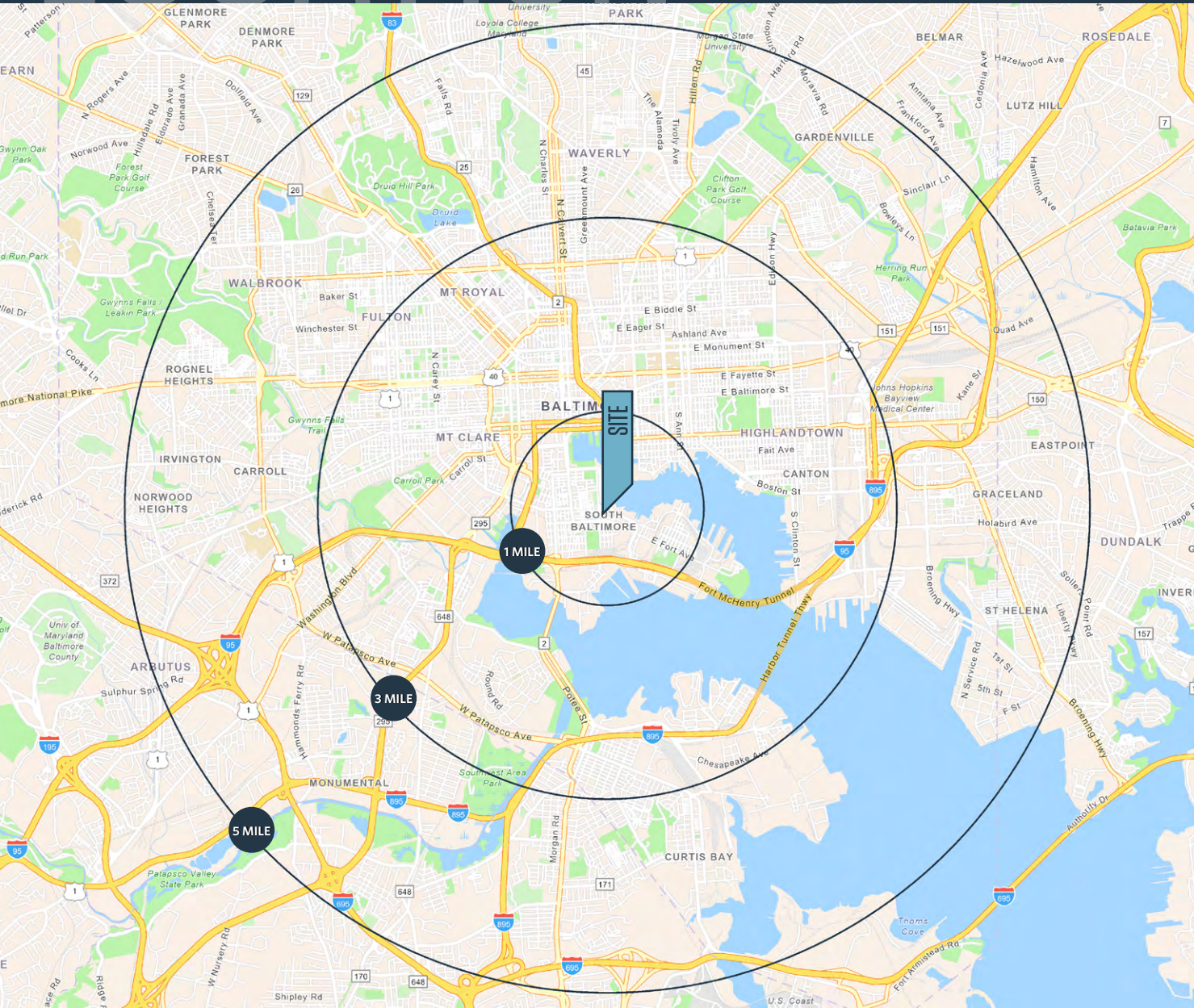
JAKE LEVIN

jlevin@klnb.com | 202-909-6102

LOCATION

1302 KEY HIGHWAY

BALTIMORE, MD 21230, BALTIMORE CITY



PROPERTY HIGHLIGHTS:

- 0.328 Acres
- Up to 4,000 SF with Drive-Thru

DEMOGRAPHICS | 2023:

1-MILE	3-MILE	5-MILE
Population		
28,397	208,626	457,017
Daytime Population		
59,942	342,708	580,081
Households		
15,567	96,426	197,273
Average HH Income		
\$171,780	\$96,249	\$86,397

[CLICK TO DOWNLOAD DEMOGRAPHIC REPORT](#)

TRAFFIC COUNTS | 2022:

Key Highway	16,385 ADT
I-95	118,287 ADT

RACHEL KLEIN

rklein@klnb.com | 443-632-2087

MICHAEL GINSBURG

mginsburg@klnb.com | 443-632-2041

JAKE LEVIN

jlevin@klnb.com | 202-909-6102



MARKET

1302 KEY HIGHWAY

BALTIMORE, MD 21230, BALTIMORE CITY



RACHEL KLEIN

rklein@klnb.com | 443-632-2087

MICHAEL GINSBURG

mginsburg@klnb.com | 443-632-2041

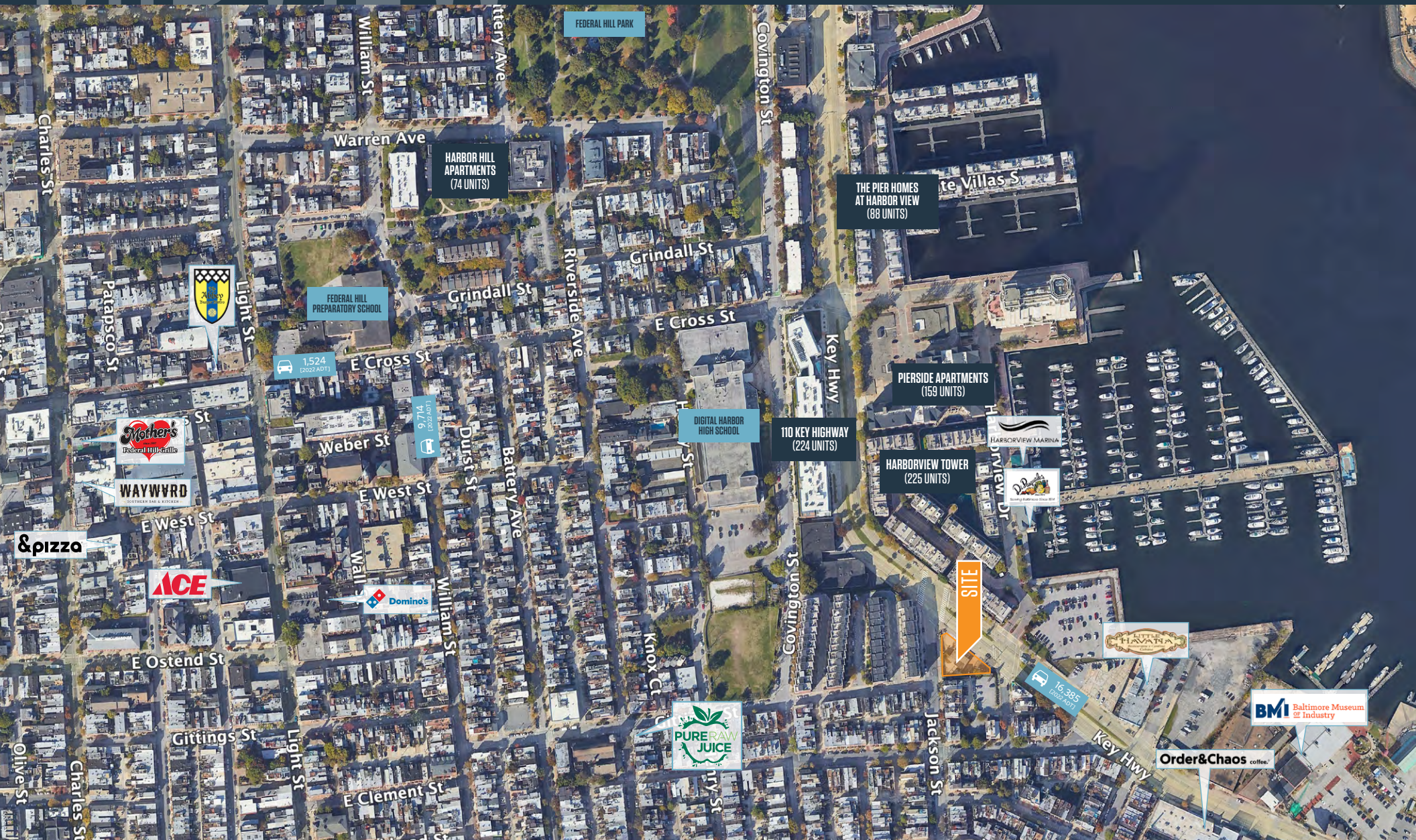
JAKE LEVIN

jlevin@klnb.com | 202-909-6102



1302 KEY HIGHWAY

BALTIMORE, MD 21230, BALTIMORE CITY



RACHEL KLEIN
rklein@klnb.com | 443-632-2087

MICHAEL GINSBURG
mginsburg@klnb.com | 443-632-2041

JAKE LEVIN
jlevin@klnb.com | 202-909-6102

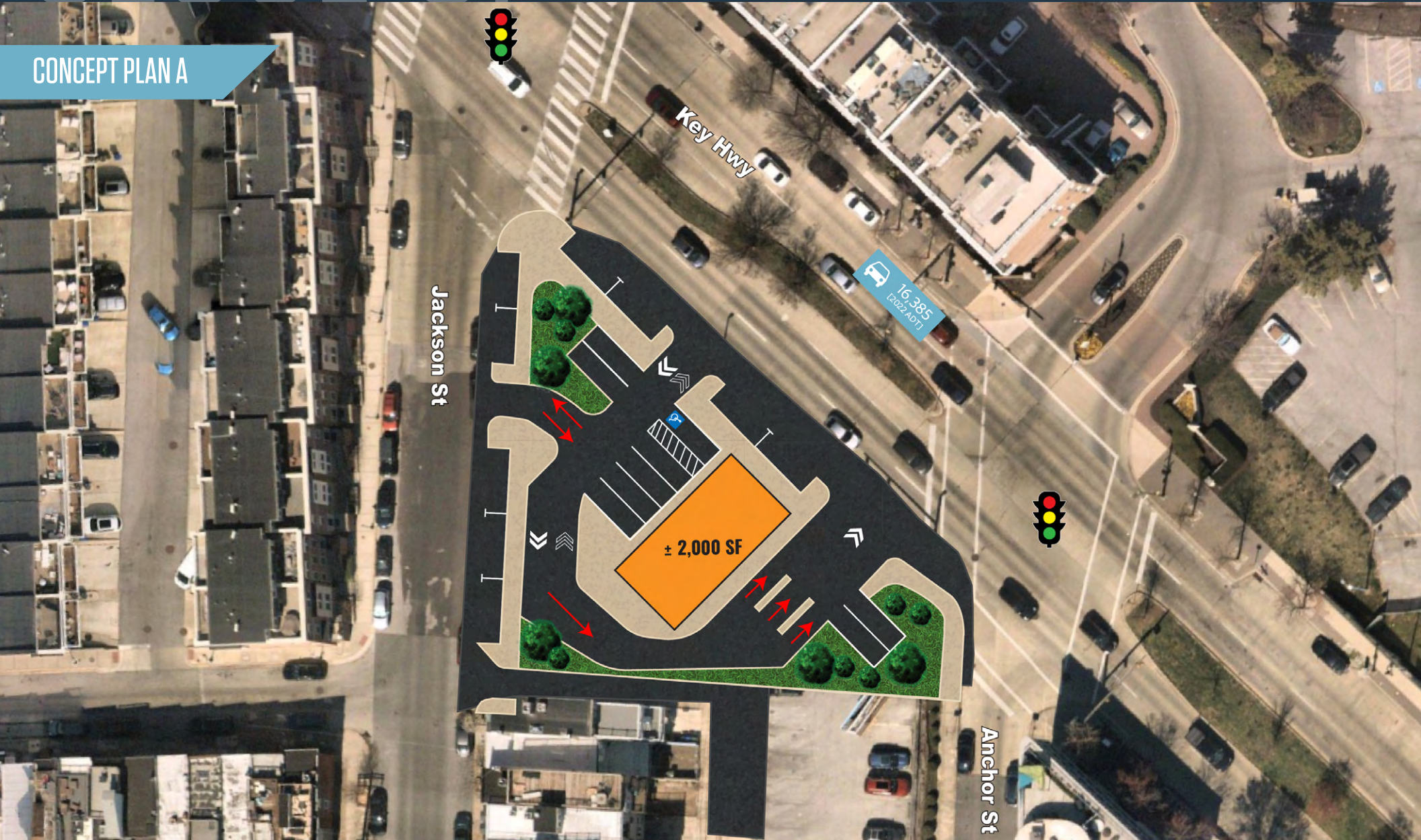


CLOSE UP

1302 KEY HIGHWAY

BALTIMORE, MD 21230, BALTIMORE CITY

CONCEPT PLAN A



RACHEL KLEIN

rklein@klnb.com | 443-632-2087

MICHAEL GINSBURG

mginsburg@klnb.com | 443-632-2041

JAKE LEVIN

jlevin@klnb.com | 202-909-6102

klnb

CLOSE UP

1302 KEY HIGHWAY

BALTIMORE, MD 21230, BALTIMORE CITY

CONCEPT PLAN B



RACHEL KLEIN

rklein@klnb.com | 443-632-2087

MICHAEL GINSBURG

mginsburg@klnb.com | 443-632-2041

JAKE LEVIN

jlevin@klnb.com | 202-909-6102

klnb



1302 KEY HIGHWAY

BALTIMORE, MD 21230, BALTIMORE CITY

FOR MORE INFORMATION, PLEASE CONTACT:

RACHEL KLEIN

rklein@klnb.com
443-632-2087

MICHAEL GINSBURG

mginsburg@klnb.com
443-632-2041

JAKE LEVIN

jlevin@klnb.com
202-909-6102

100 West Road, Suite 505, Towson, MD 21204

.....

klnb.com

 facebook.com/KLNBCRE

 [@KLNBCRE](https://twitter.com/KLNBCRE)

 linkedin.com/company/klnb

 instagram.com/klnbcre

CLICK TO VIEW PROPERTY WEBSITE

While we have no reason to doubt the accuracy of any of the information supplied, we cannot, and do not, guarantee its accuracy. All information should be independently verified prior to a purchase or lease of the property. We are not responsible for errors, omissions, misuse, or misinterpretation of information contained herein and make no warranty of any kind, express or implied, with respect to the property or any other matters.