



MARYLAND CORPORATE CENTER

7404 EXECUTIVE PLACE, LANHAM, MD 20706, PRINCE GEORGE'S COUNTY



NAI klnb
 JEFF GROVES 443-574-1435 AARON CARROLL 443-574-1430
OFFICE FOR LEASE
 klnb.com 410-290-1110

OFFICE SPACE FOR LEASE

AARON CARROLL
acarroll@klnb.com | 202-652-2333

KEN FELLOWS
kfellows@klnb.com | 301-222-0210

ROB PUGH
rpugh@klnb.com | 301-222-0211

KEIRY MARTINEZ
kmartinez@klnb.com | 703-334-5629

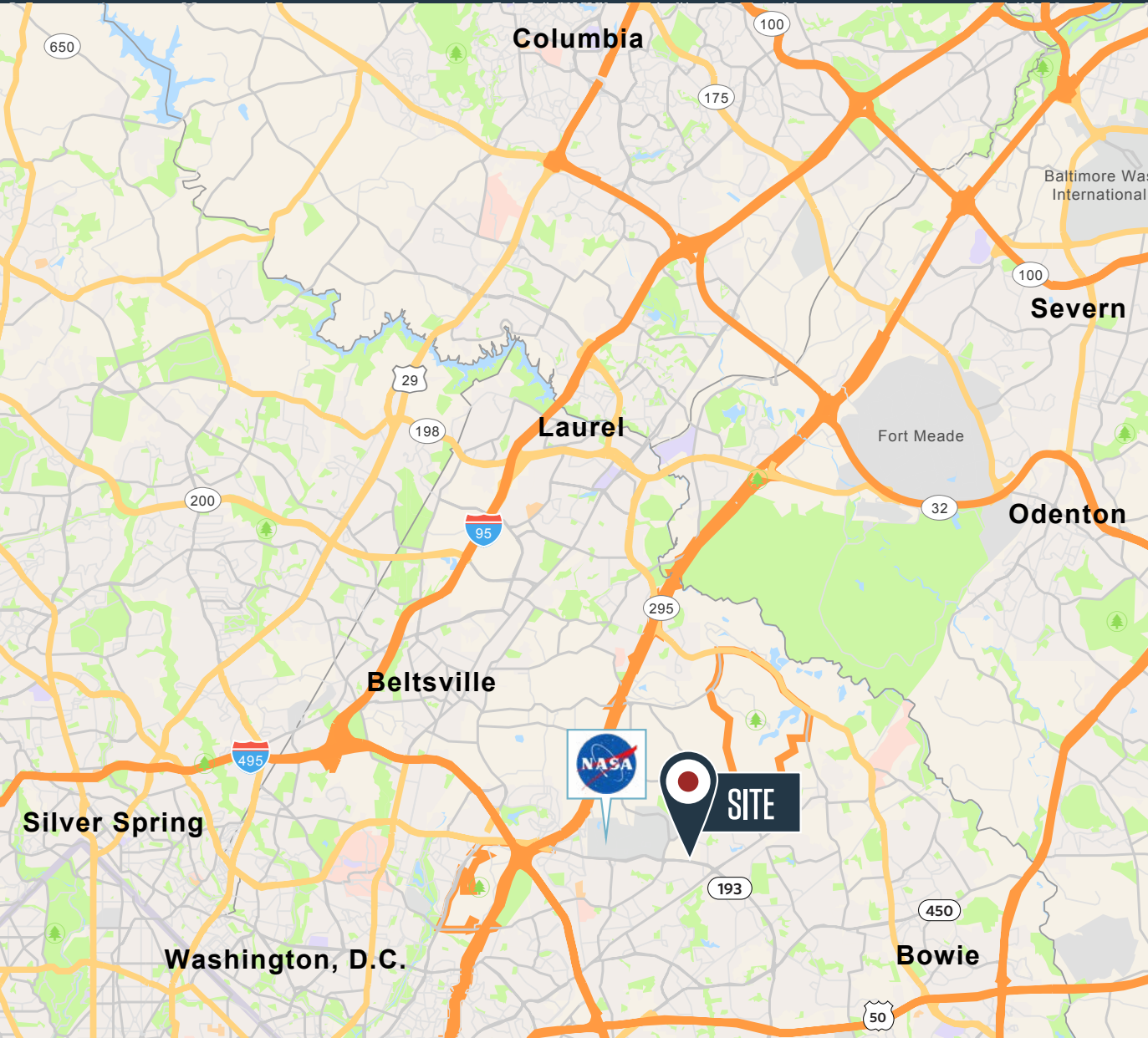


klnb.com

LOCATION

MARYLAND CORPORATE CENTER

7404 EXECUTIVE PLACE, LANHAM, MD 20706, PRINCE GEORGE'S COUNTY



AVAILABLE SPACE

Suite 300: 8,099 RSF

BUILDING FEATURES

- Lease Rate: \$18.95 FS
- 77,000 Rentable square feet
- 4 stories
- 2.73 acres
- Zoned I-1
- 1 mile from NASA / Goddard Space Flight Center
- 3.5 parking spaces per 1,000 square feet
- Transportation to Greenbelt Metro & PG County bus service (TheBus)
- Easy access to Baltimore-Washington Parkway (MD Rt. 295) and Capital Beltway (I-495)
- On-site shared conference center

AARON CARROLL

acarroll@klnb.com | 202-652-2333

KEN FELLOWS

kfellows@klnb.com | 301-222-0210

ROB PUGH

rpugh@klnb.com | 301-222-0211

KEIRY MARTINEZ

kmartinez@klnb.com | 703-334-5629



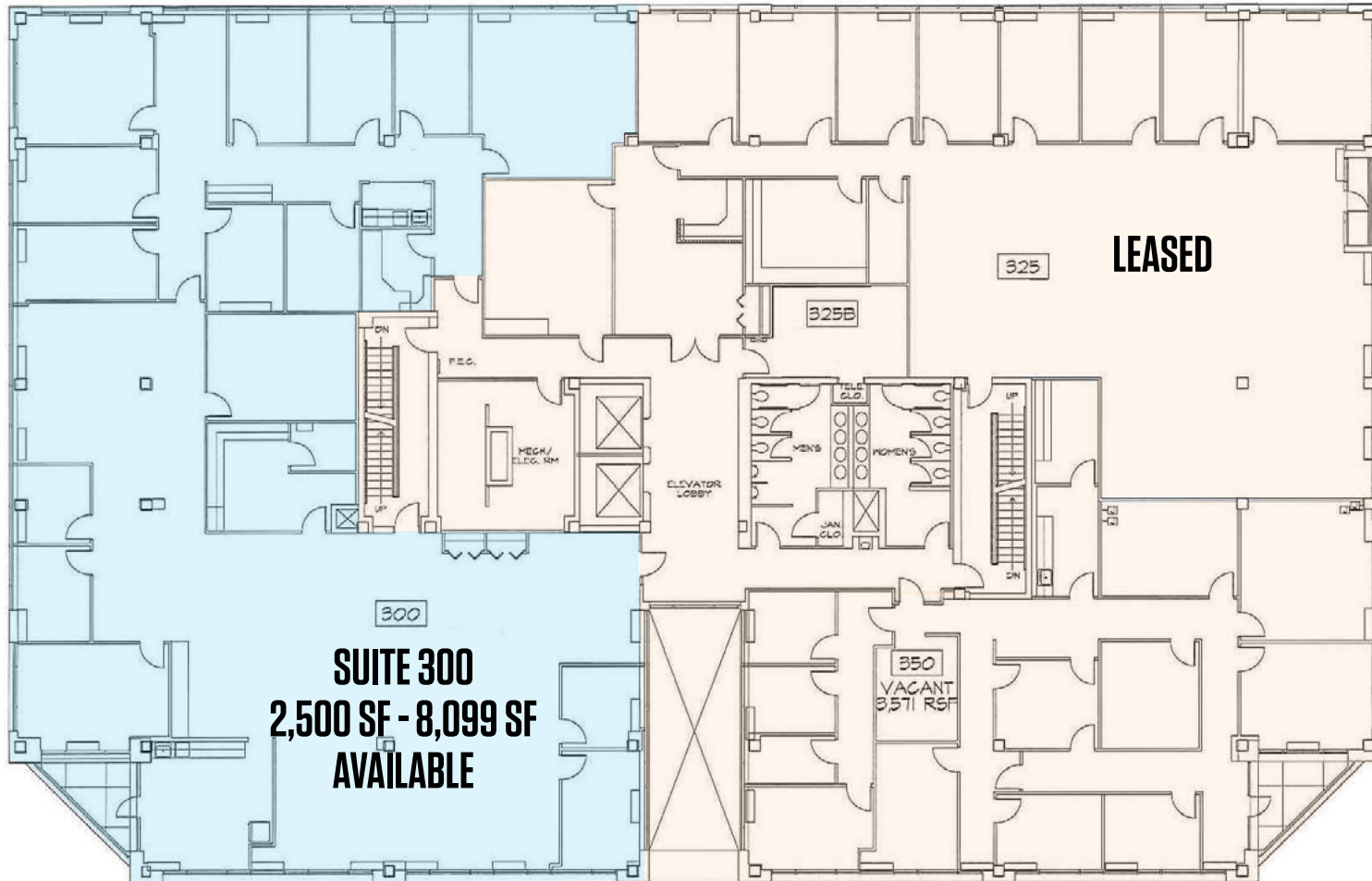
klnb.com

FLOOR PLAN

MARYLAND CORPORATE CENTER

7404 EXECUTIVE PLACE, LANHAM, MD 20706, PRINCE GEORGE'S COUNTY

3RD FLOOR PLAN



AARON CARROLL
acarroll@klnb.com | 202-652-2333

KEN FELLOWS
kfellows@klnb.com | 301-222-0210

ROB PUGH
rpugh@klnb.com | 301-222-0211

KEIRY MARTINEZ
kmartinez@klnb.com | 703-334-5629



klnb.com

PHOTOS

MARYLAND CORPORATE CENTER

7404 EXECUTIVE PLACE, LANHAM, MD 20706, PRINCE GEORGE'S COUNTY



AARON CARROLL
acarroll@klnb.com | 202-652-2333

KEN FELLOWS
kfellows@klnb.com | 301-222-0210

ROB PUGH
rpugh@klnb.com | 301-222-0211

KEIRY MARTINEZ
kmartinez@klnb.com | 703-334-5629



klnb.com

FOR MORE INFORMATION, PLEASE CONTACT:

AARON CARROLL

acarroll@kInb.com
202-652-2333

KEN FELLOWS

kfellows@kInb.com
301-222-0210

ROB PUGH

rpugh@kInb.com
301-222-0211

KEIRY MARTINEZ

kmartinez@kInb.com
703-334-5629

1130 Connecticut Ave, NW, Suite 600, Washington, DC 20036

.....

kInb.com



[instagram.com/kInbcre](https://www.instagram.com/kInbcre)



[linkedin.com/company/kInb](https://www.linkedin.com/company/kInb)



[facebook.com/KLNBCRE](https://www.facebook.com/KLNBCRE)

CLICK TO VIEW PROPERTY WEBSITE