



WAREHOUSE FOR LEASE

PROPERTY HIGHLIGHTS:

- **Building Size:** 77,000 SF
- **Available Space:** 30,452 SF
- **Office Area:** 1,600 SF
- **Availability:** February 1, 2024
- **Ceiling Height:** 22'
- **Parking:** Free & unreserved surface
- **Zoning:** IE
- **Loading:** Four covered docks (one leveler)
- **Wet sprinkler system**

AARON CARROLL

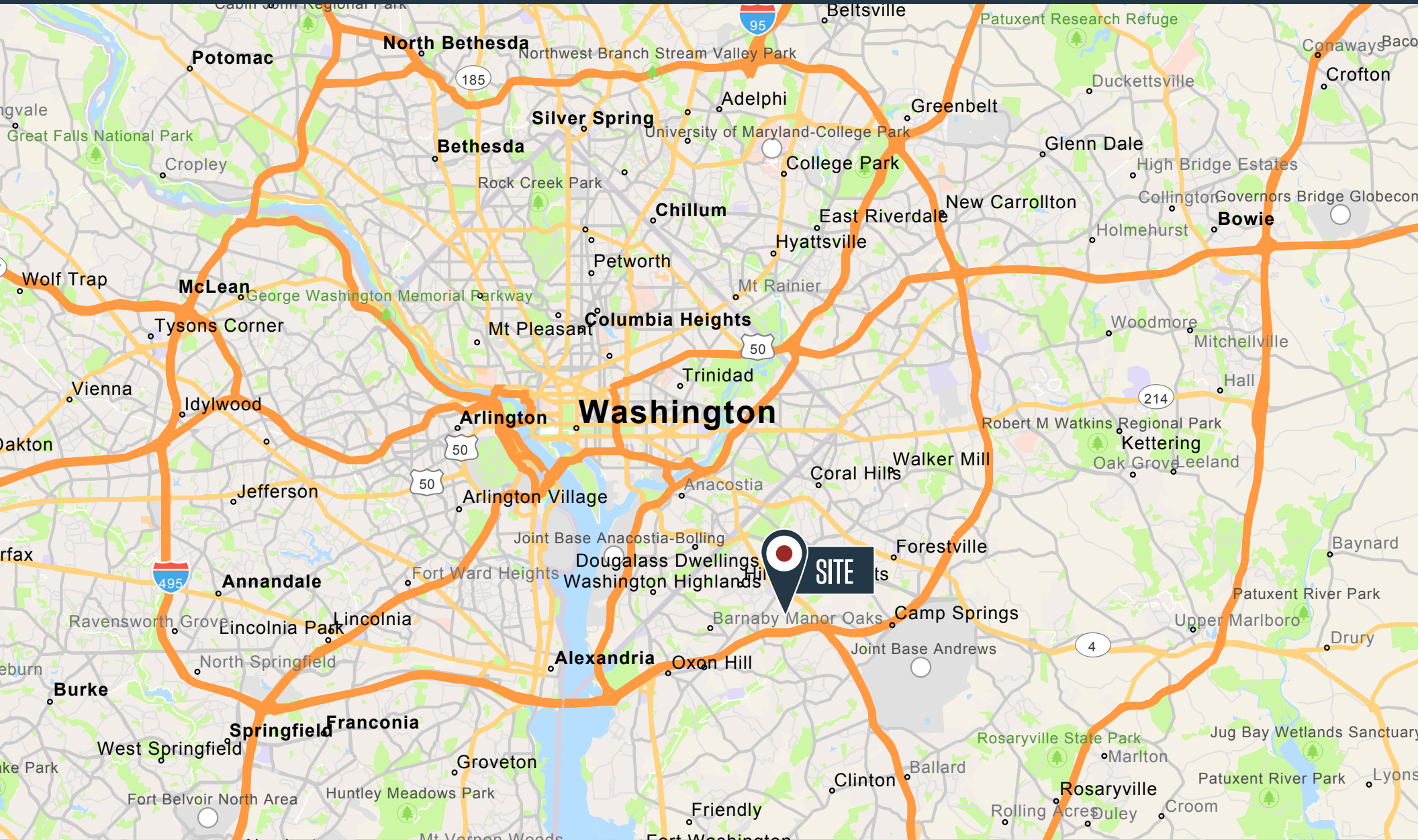
acarroll@kInb.com | 202-652-2333

kInb.com

LOCATION

MARLOW HEIGHTS INDUSTRIAL CENTER

4823 BEECH PLACE, MARLOW HEIGHTS, MD 20748, PRINCE GEORGE'S COUNTY



AARON CARROLL

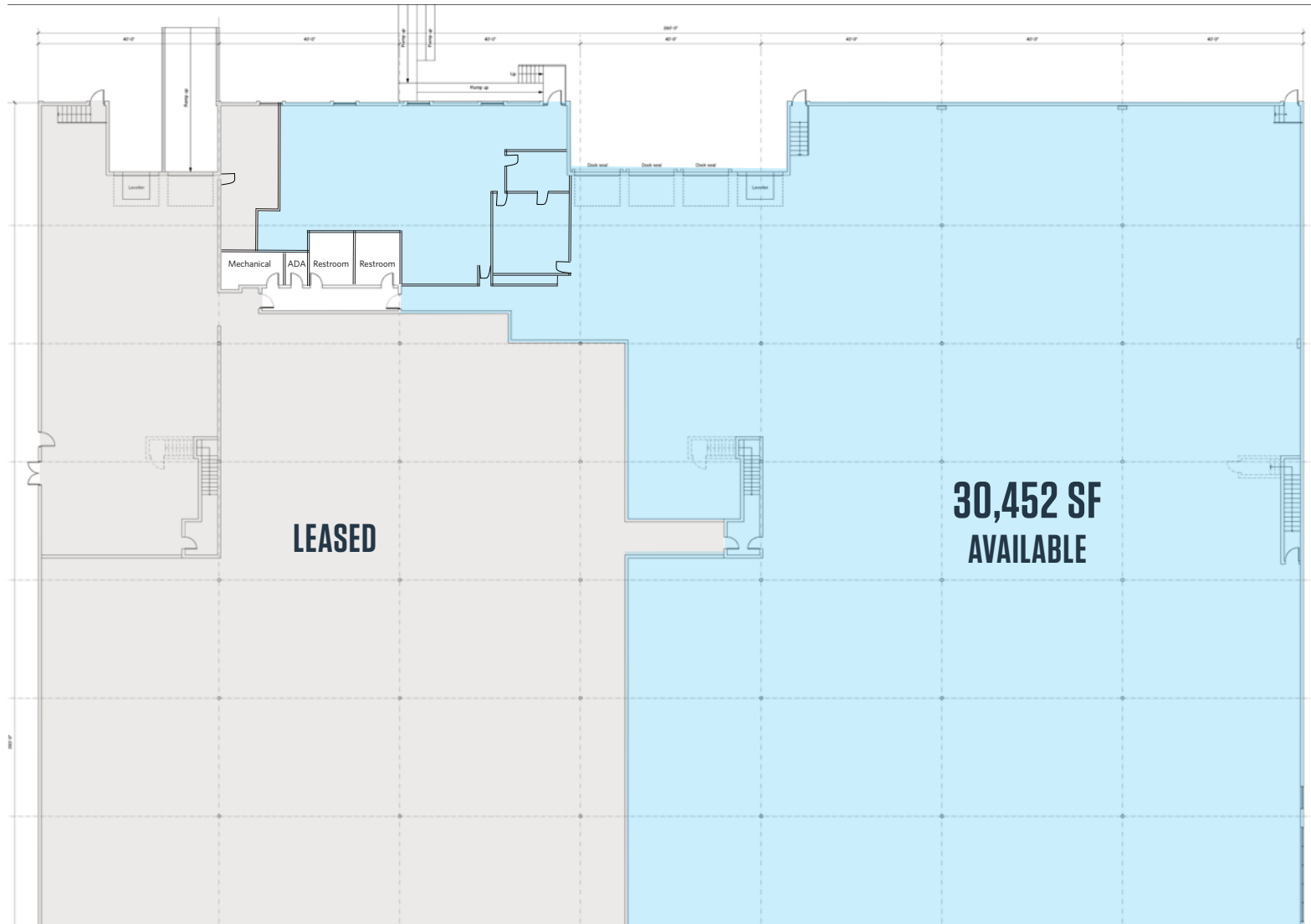
acarroll@klnb.com | 202-652-2333



FLOOR PLAN

MARLOW HEIGHTS INDUSTRIAL CENTER

4823 BEECH PLACE, MARLOW HEIGHTS, MD 20748, PRINCE GEORGE'S COUNTY



AARON CARROLL

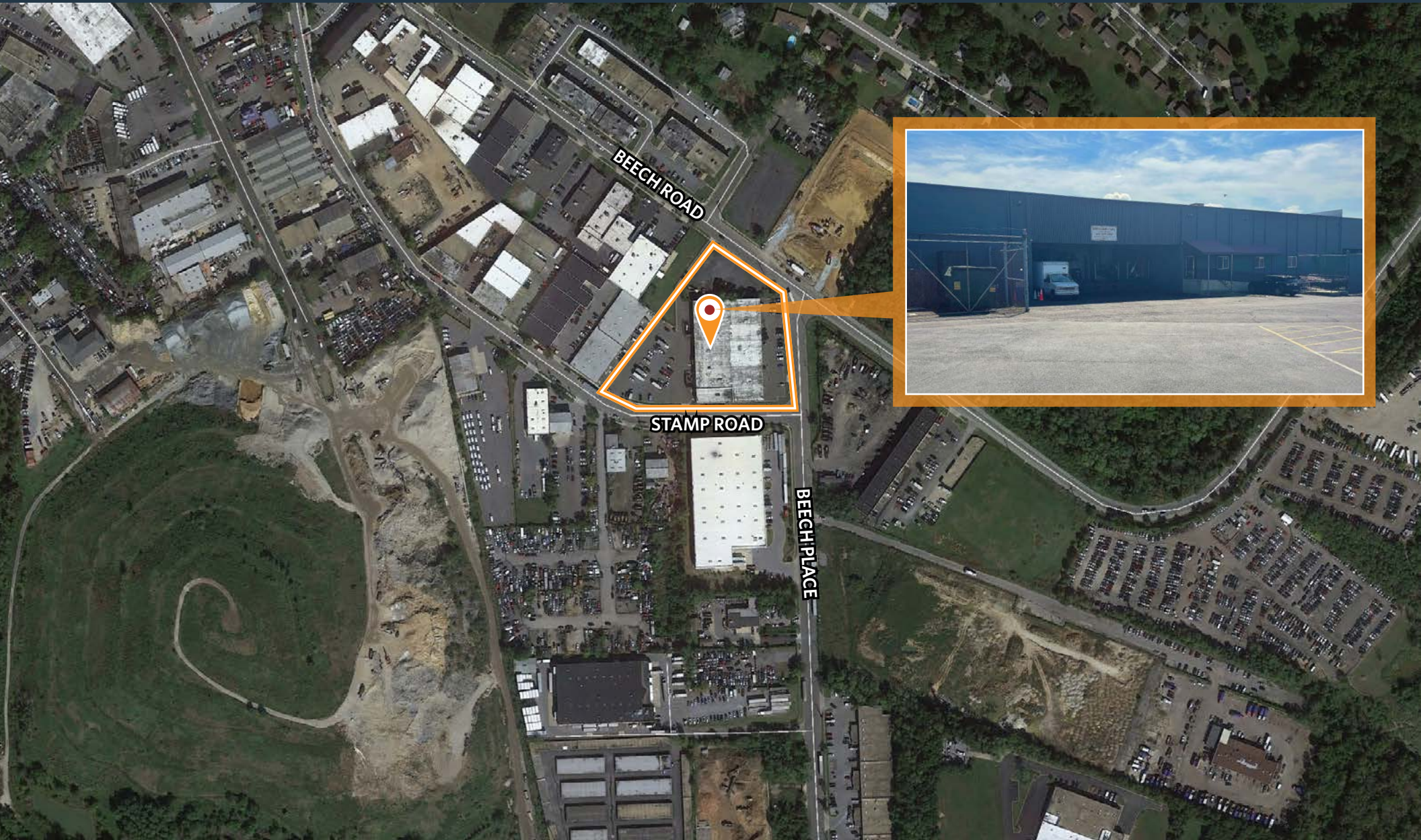
acarroll@klnb.com | 202-652-2333



AERIAL VIEW

MARLOW HEIGHTS INDUSTRIAL CENTER

4823 BEECH PLACE, MARLOW HEIGHTS, MD 20748, PRINCE GEORGE'S COUNTY



AARON CARROLL

acarroll@klnb.com | 202-652-2333



FOR MORE INFORMATION, PLEASE CONTACT:

AARON CARROLL

acarroll@kl**nb**.com

202-652-2333

1130 Connecticut Ave, NW, Suite 600, Washington, DC 20036

.....

klnb**.com**



instagram.com/kl**nb**cre



linkedin.com/company/kl**nb**



facebook.com/KLN**BCRE**

CLICK TO VIEW PROPERTY WEBSITE