

# HAMPTON COMMERCE CENTER

9201 - 9203 Hampton Overlook  
Capitol Heights, MD 20743, Prince George's County

**OVERSIZED DRIVE-IN DOORS**



**OFFICE/WAREHOUSE FOR LEASE**

## PROPERTY FEATURES

- **Project:** Hampton Commerce Center 1 & 2
- **Total Size & Ceiling Height:**
  - » Building 1: 45,000 SF; 18' clear
  - » Building 2: 28,830 SF; 16' clear
- **Zoning:** I-1 Light Industrial
- **Parking Ratio:** 2.6 per 1,000 square feet

## CURRENT SPACE AVAILABILITY

- 9201 - 9203 Hampton Overlook: 4,260 SF
- Asking Rate: \$13.75 PSF, NNN
- Two (2) large drive-in doors
- Approximately 1/3 office with training room and 2 restrooms
- Window offices on two (2) sides
- End unit at prominent location at entrance to property
- Fresh paint and carpet

**Aaron Carroll**  
acarroll@klnb.com  
202-652-2333

**Spence Daw**  
sdaw@klnb.com  
443-574-1429

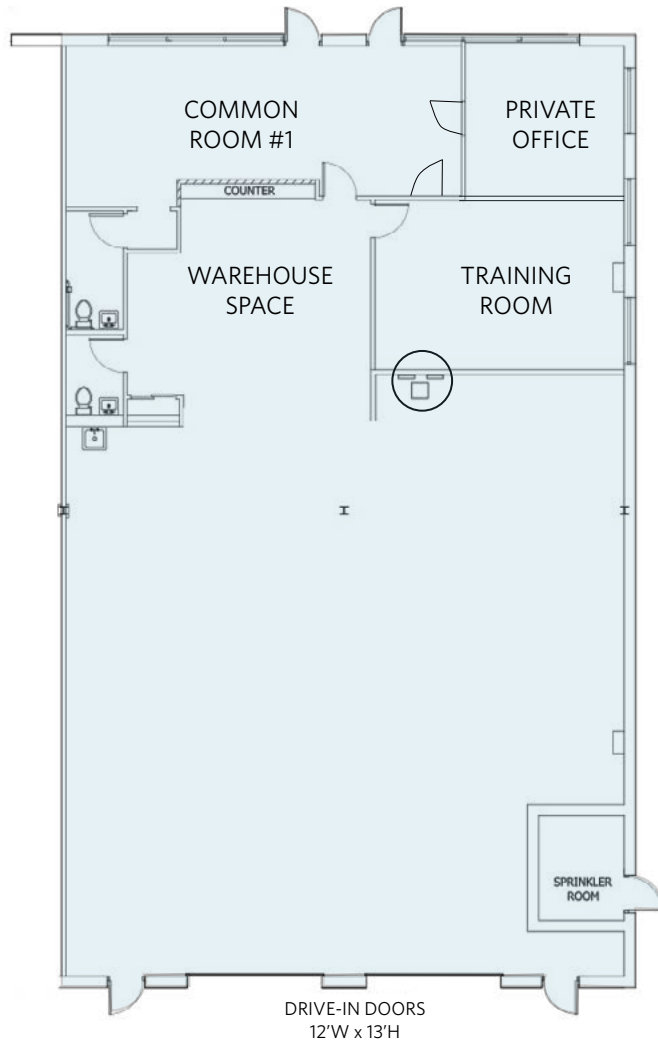
9881 Broken Land Pkwy, #300  
Columbia, MD 21046  
[klnb.com](http://klnb.com)

**NAI klnb**

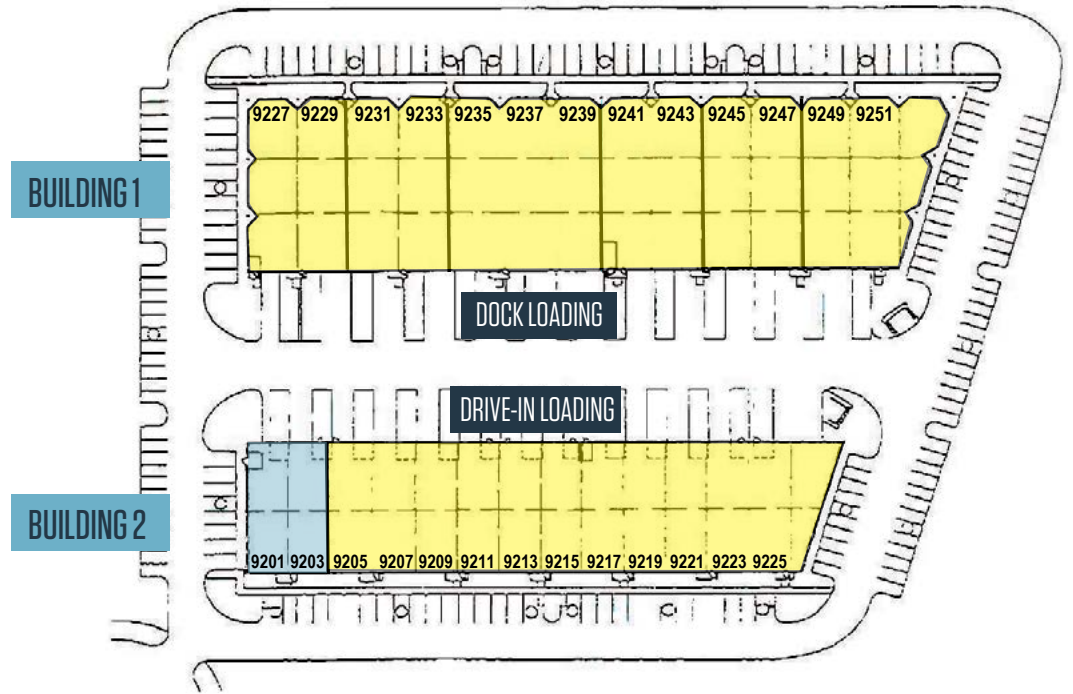
# HAMPTON COMMERCE CENTER

9201 - 9203 Hampton Overlook  
Capitol Heights, MD 20743, Prince George's County

## 9201 & 9203



**BUILDING 1:** Dock Loading  
**BUILDING 2:** Drive-In Loading



MANAGED BY:



AVAILABLE  
LEASED

## FLOOR & SITE PLAN

Aaron Carroll  
acarroll@klnb.com  
202-652-2333

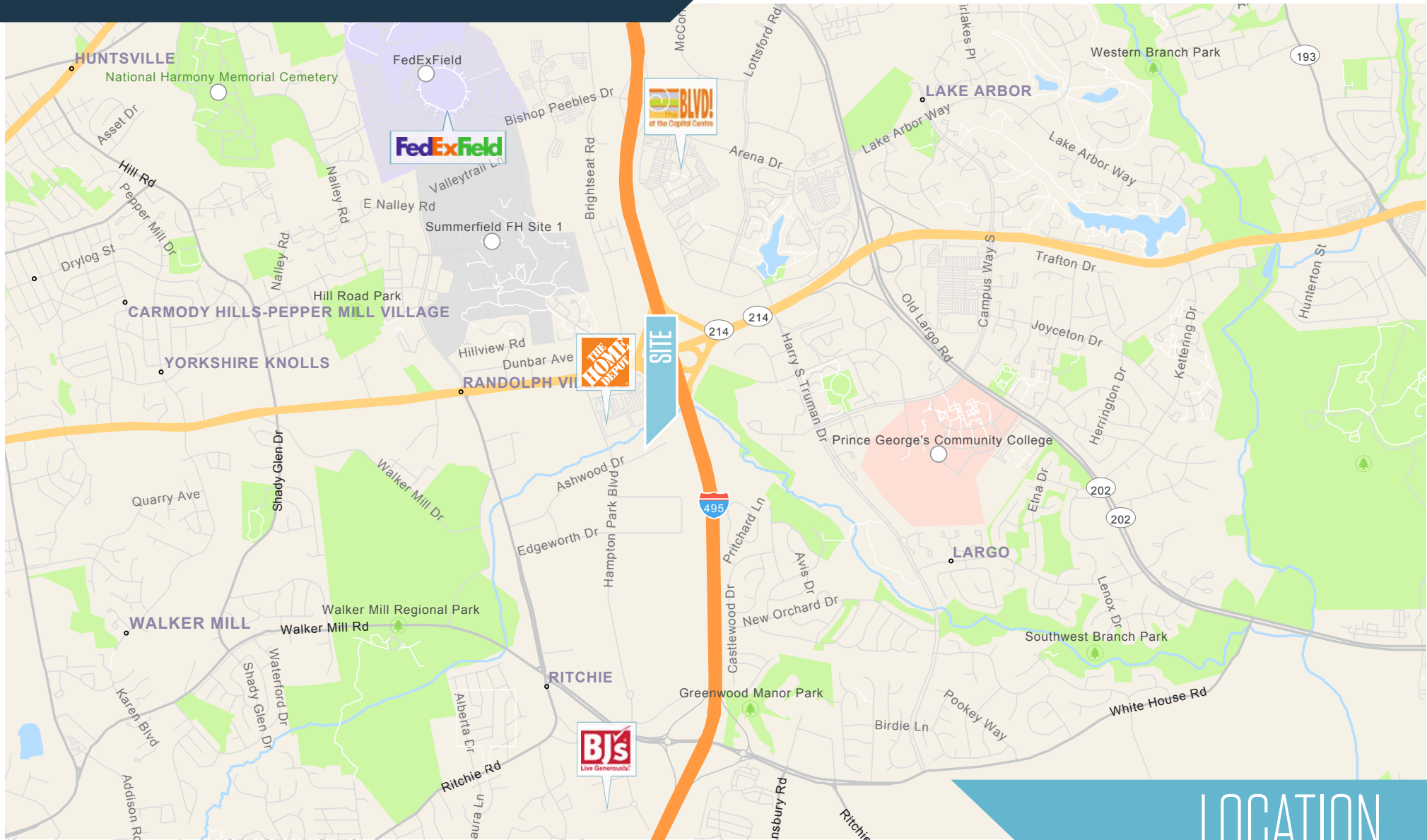
Spence Daw  
sdaw@klnb.com  
443-574-1429

9881 Broken Land Pkwy, #300  
Columbia, MD 21046  
klnb.com



# HAMPTON COMMERCE CENTER

9201 - 9203 Hampton Overlook  
Capitol Heights, MD 20743, Prince George's County



Aaron Carroll  
acarroll@klnb.com  
202-652-2333

Spence Daw  
sdaw@klnb.com  
443-574-1429

9881 Broken Land Pkwy, #300  
Columbia, MD 21046  
klnb.com



# HAMPTON COMMERCE CENTER

9201- 9203 Hampton Overlook  
Capitol Heights, MD 20743, Prince George's County

[CLICK TO VIEW PROPERTY WEBSITE](#)

For More Information, Please Contact:

**Aaron Carroll**

[acarroll@klnb.com](mailto:acarroll@klnb.com)

202-652-2333

**Spence Daw**

[sdaw@klnb.com](mailto:sdaw@klnb.com)

443-574-1429

9881 Broken Land Parkway, Suite 300  
Columbia, MD 21046

[klnb.com](http://klnb.com)



[instagram.com/klnbcre](https://www.instagram.com/klnbcre)



[linkedin.com/company/klnb](https://www.linkedin.com/company/klnb)



[facebook.com/KLNBCRE](https://www.facebook.com/KLNBCRE)

While we have no reason to doubt the accuracy of any of the information supplied, we cannot, and do not, guarantee its accuracy. All information should be independently verified prior to a purchase or lease of the property. We are not responsible for errors, omissions, misuse, or misinterpretation of information contained herein and make no warranty of any kind, express or implied, with respect to the property or any other matters.

**NAI** klnb