

# MEADOWS SHOPPING CENTER

6660-6666 Security Blvd, Baltimore, MD 21207  
Baltimore County



## RETAIL FOR LEASE

JOIN:

**SUBWAY**

**FAMILY DOLLAR**  
my family, my family dollar.

**dd's**  
DISCOUNTS



**GLOBAL**  
F O O D  
지구촌마켓



- Available: 1,600 SF & 1,800 SF
- Strong daytime population
  - Social Security - 9,800 employees
  - Centers for Medicare/Medicaid - 2,968 employees
- Strategically located at corner of Security & Woodlawn, .2 miles from I-695 and 70

**Matt Copeland**  
mcopeland@klnb.com  
443-632-2051

**Alex Shearer**  
ashearer@klnb.com  
443-632-2081

OWNED & MANAGED BY:

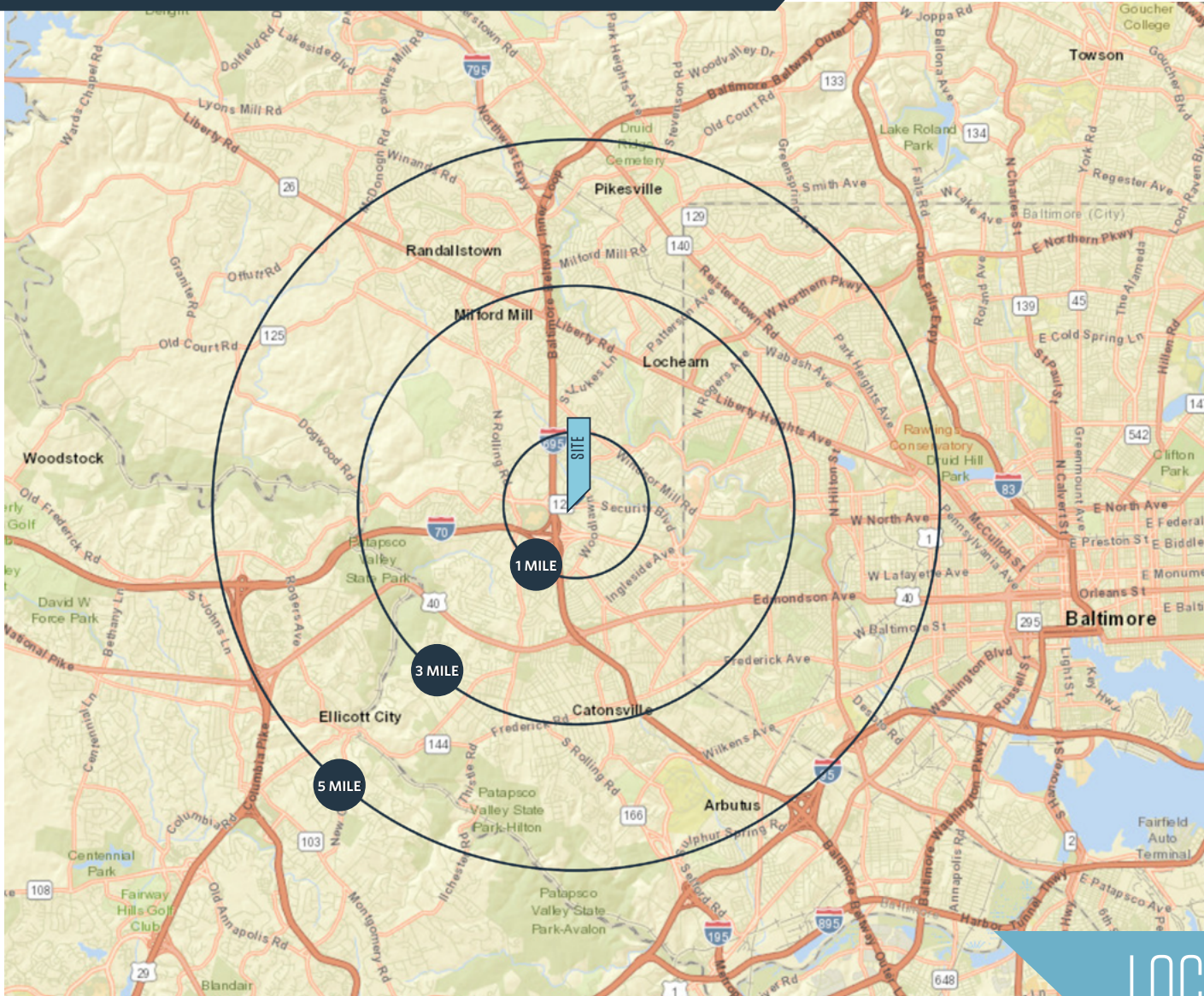
**Atlantic**  
REALTY COMPANIES

**klnb**



# MEADOWS SHOPPING CENTER

6660-6666 Security Blvd, Baltimore, MD 21207  
Baltimore County



## DEMOGRAPHICS | 2023:

1-MILE	3-MILE	5-MILE
Population		
8,654	122,819	345,884
Daytime Population		
21,827	111,958	327,975
Households		
3,265	48,202	136,458
Average HH Income		
\$89,674	\$95,836	\$92,698

[CLICK TO DOWNLOAD DEMOGRAPHIC REPORT](#)

## TRAFFIC COUNTS | 2022:

Security Blvd. (MD 122)	30,914 ADT
Woodlawn Dr.	17,594 ADT
I-695	199,882 ADT

## LOCATION & DEMOGRAPHICS

**Matt Copeland**  
mcopeland@klnb.com  
443-632-2051

**Alex Shearer**  
ashearer@klnb.com  
443-632-2081

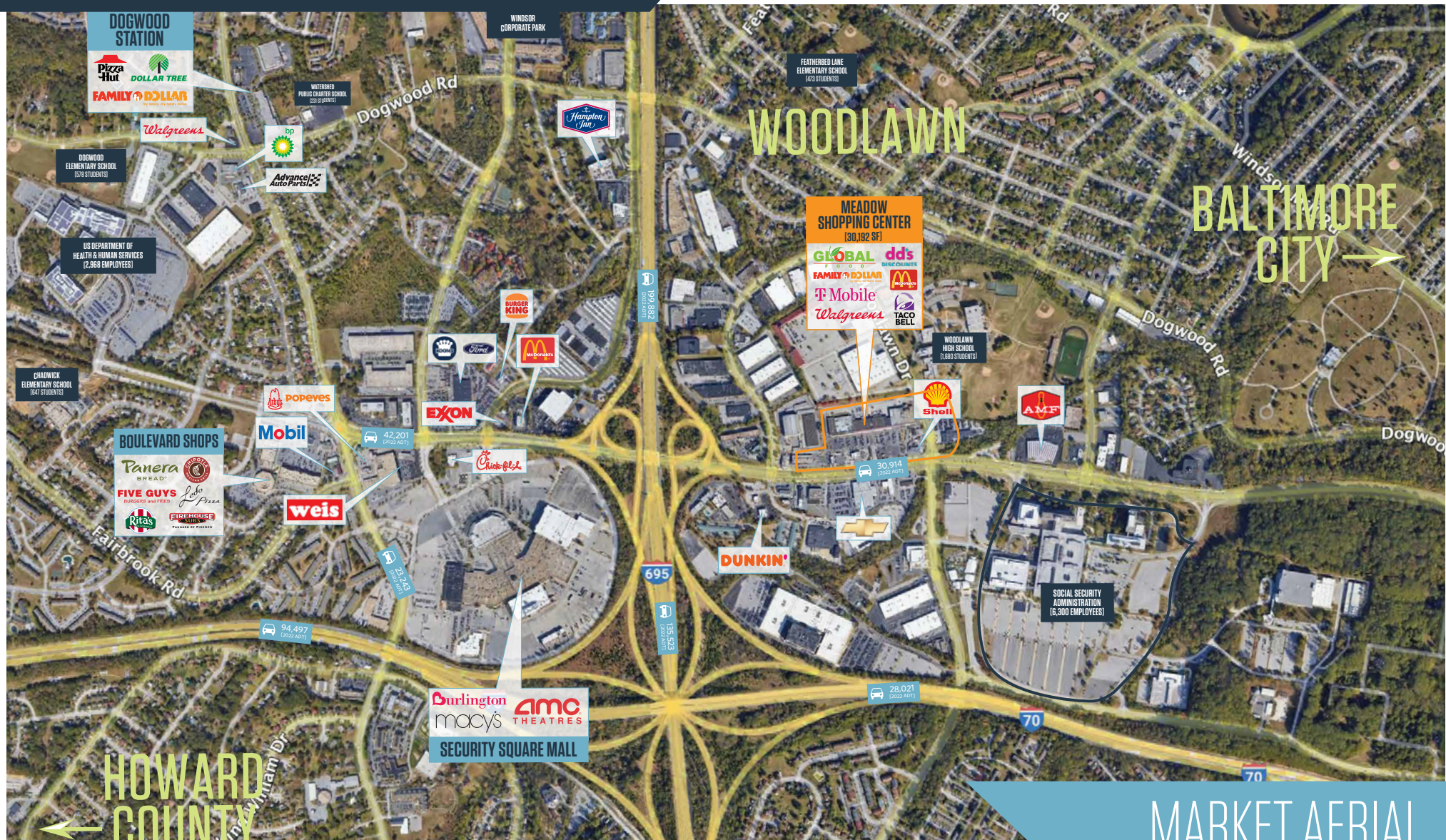
100 West Road, Suite 505  
Towson, MD 21204  
**klnb.com**

**klnb**



# MEADOWS SHOPPING CENTER

6660-6666 Security Blvd, Baltimore, MD 21207  
Baltimore County



MARKET AERIAL

Matt Copeland  
mcopeland@klnb.com  
443-632-2051

Alex Shearer  
ashearer@klnb.com  
443-632-2081

100 West Road, Suite 505  
Towson, MD 21204  
klnb.com

klnb



# MEADOWS SHOPPING CENTER

6660-6666 Security Blvd, Baltimore, MD 21207  
Baltimore County



CLOSE-UP AERIAL

**Matt Copeland**  
mcopeland@klnb.com  
443-632-2051

**Alex Shearer**  
ashearer@klnb.com  
443-632-2081

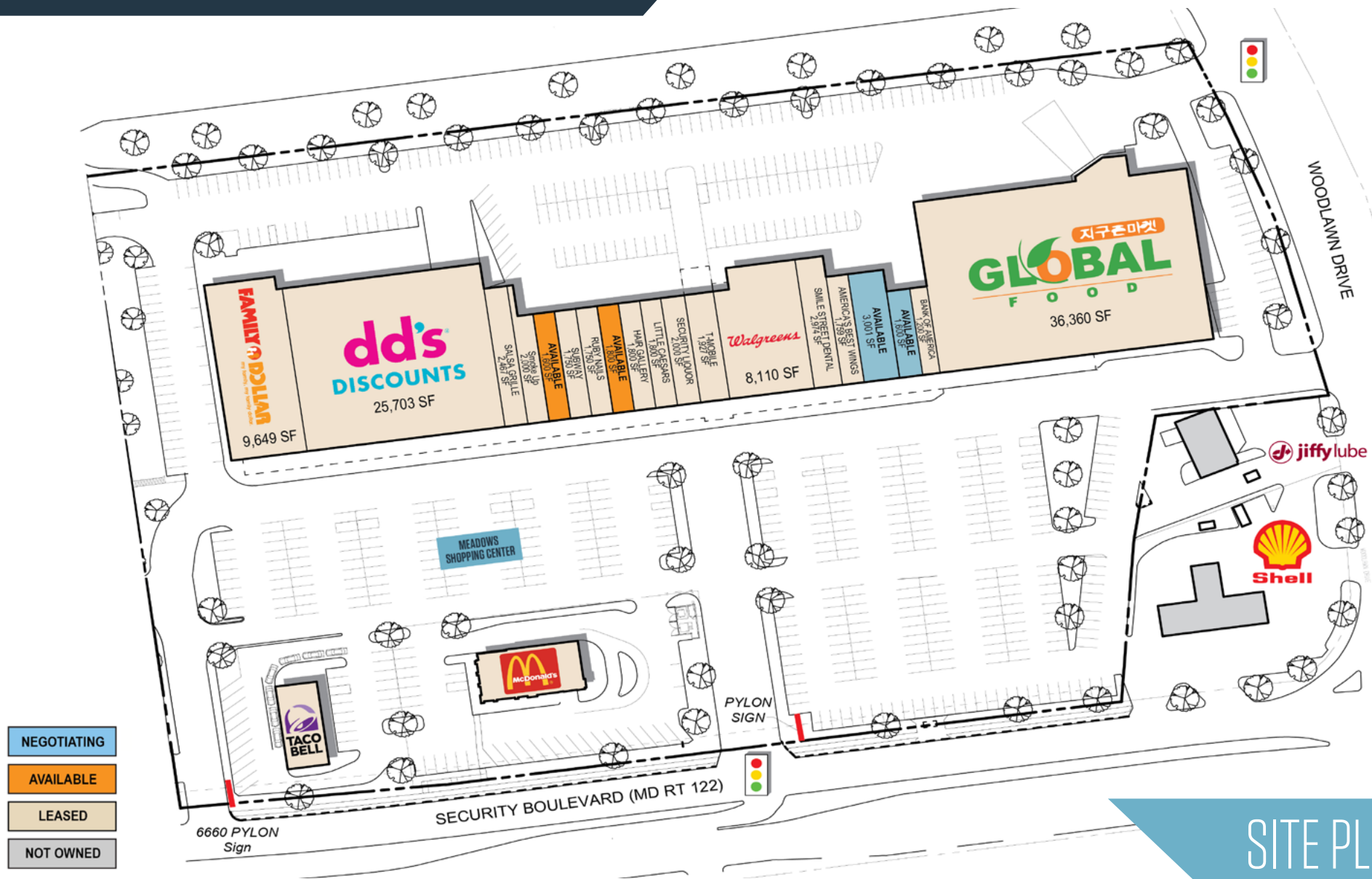
100 West Road, Suite 505  
Towson, MD 21204  
klnb.com

**klnb**



# MEADOWS SHOPPING CENTER

6660-6666 Security Blvd, Baltimore, MD 21207  
Baltimore County



# SITE PLAN

**Matt Copeland**  
mcopeland@klnb.com  
443-632-2051

**Alex Shearer**  
ashearer@klnb.com  
443-632-2081

100 West Road, Suite 505  
Towson, MD 21204  
**klnb.com**





# MEADOWS SHOPPING CENTER

6660-6666 Security Blvd, Baltimore, MD 21207  
Baltimore County

CLICK TO VIEW PROPERTY WEBSITE

For More Information, Please Contact:

**Matt Copeland**

mcopeland@klnb.com  
443-632-2051

**Alex Shearer**

ashearer@klnb.com  
443-632-2081

100 West Road, Suite 505  
Towson, MD 21204

[klnb.com](http://klnb.com)



[instagram.com/klnbcre](https://www.instagram.com/klnbcre)



[linkedin.com/company/klnb](https://www.linkedin.com/company/klnb)



[facebook.com/KLNBCRE](https://www.facebook.com/KLNBCRE)

While we have no reason to doubt the accuracy of any of the information supplied, we cannot, and do not, guarantee its accuracy. All information should be independently verified prior to a purchase or lease of the property. We are not responsible for errors, omissions, misuse, or misinterpretation of information contained herein and make no warranty of any kind, express or implied, with respect to the property or any other matters.

**klnb**