



KIM STEIN

kstein@klnb.com | 202-652-2338

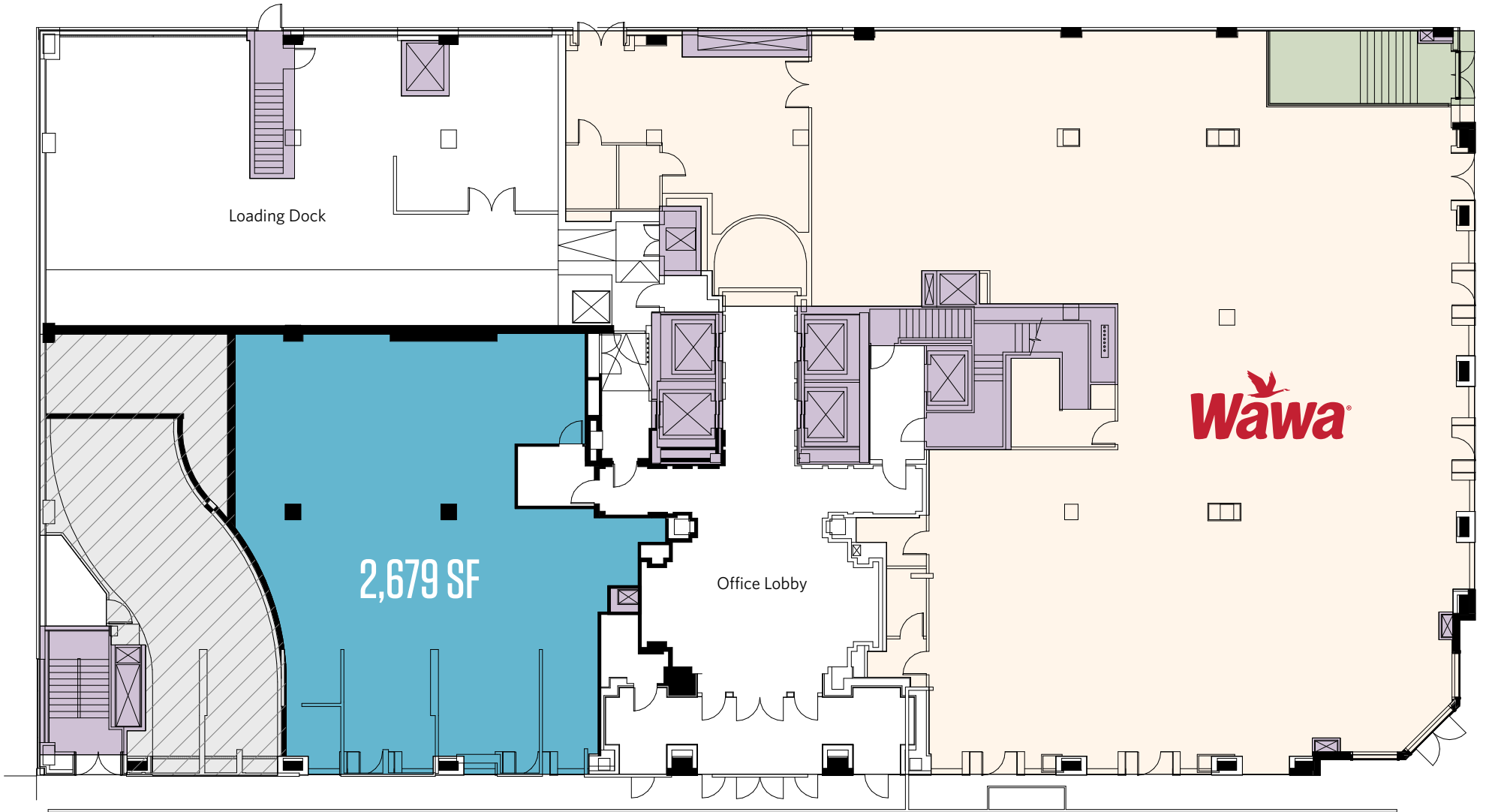
MATT SKALET

mskalet@klnb.com | 202-420-7775

SITE PLAN

1250 H STREET NW

WASHINGTON, DC 20005



STOREFRONT

KIM STEIN

kstein@klnb.com | 202-652-2338

MATT SKALET

maskalet@klnb.com | 202-420-7775



PHOTOS

1250 H STREET NW
WASHINGTON, DC 20005



KIM STEIN

kstein@klnb.com | 202-652-2338

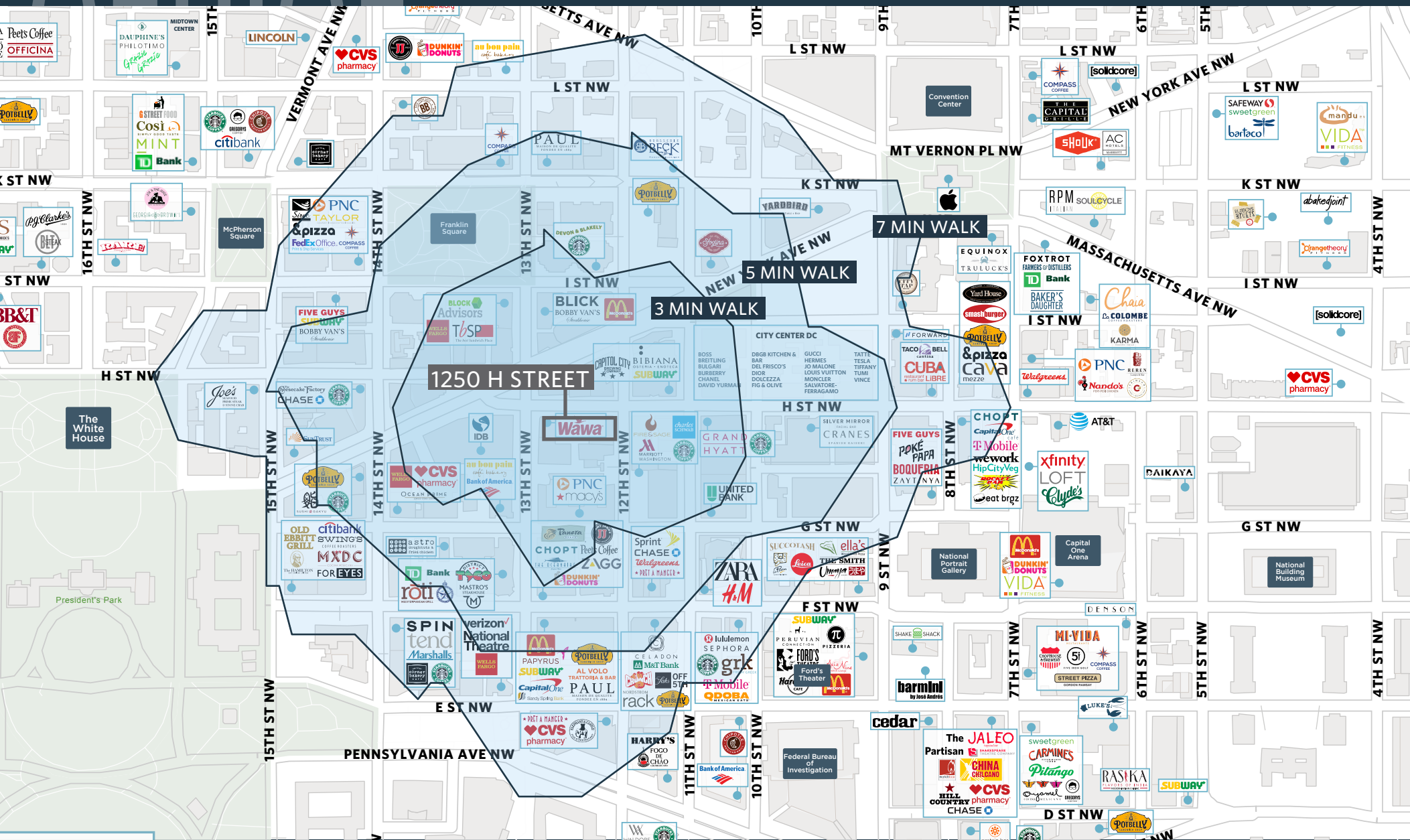
MATT SKALET

mkalet@klnb.com | 202-420-7775

klnb

1250 H STREET NW

WASHINGTON, DC 20005



KIM STEIN

kstein@klnb.com | 202-652-2338

MATT SKALET

m skalet@klnb.com | 202-420-7775



1250 H STREET NW

WASHINGTON, DC 20005

FOR MORE INFORMATION, PLEASE CONTACT:

KIM STEIN

kstein@klnb.com
202-652-2338

MATT SKALET

mskalet@klnb.com
202-420-7775

1130 Connecticut Avenue, Suite 600, Washington, DC 20036

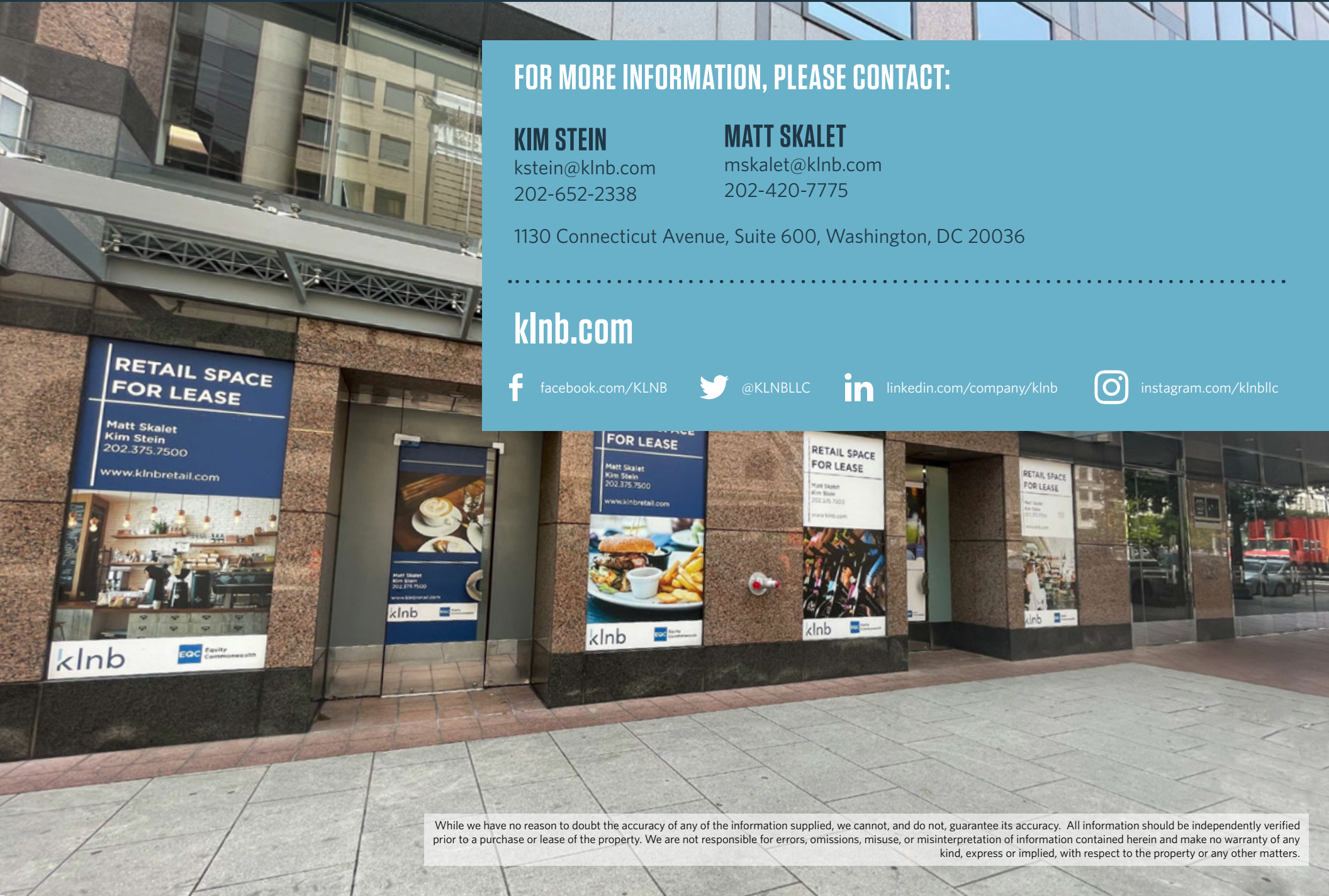
klnb.com

 facebook.com/KLNB

 [@KLNBLLC](https://twitter.com/KLNBLLC)

 linkedin.com/company/klnb

 instagram.com/klnblc



While we have no reason to doubt the accuracy of any of the information supplied, we cannot, and do not, guarantee its accuracy. All information should be independently verified prior to a purchase or lease of the property. We are not responsible for errors, omissions, misuse, or misinterpretation of information contained herein and make no warranty of any kind, express or implied, with respect to the property or any other matters.