

5150 LAWRENCE PLACE

Hyattsville, Maryland 20781
Prince George's County



FOR SUBLEASE

PROPERTY FEATURES

- **Available Space:** 34,000 square feet
- **Ceiling Height:** 20-22' clear
- **Loading:** Docks (5); Drive-In (2)
- **Dock Height:** 24"
- **Zoning:** IE (Industrial, Employment)
- **Lot Size:** 1.29 acres gated & fenced
- **Term:** Through February 2027
- **Lease Rate:** \$12 per square foot, NNN

NEARBY AMENITIES



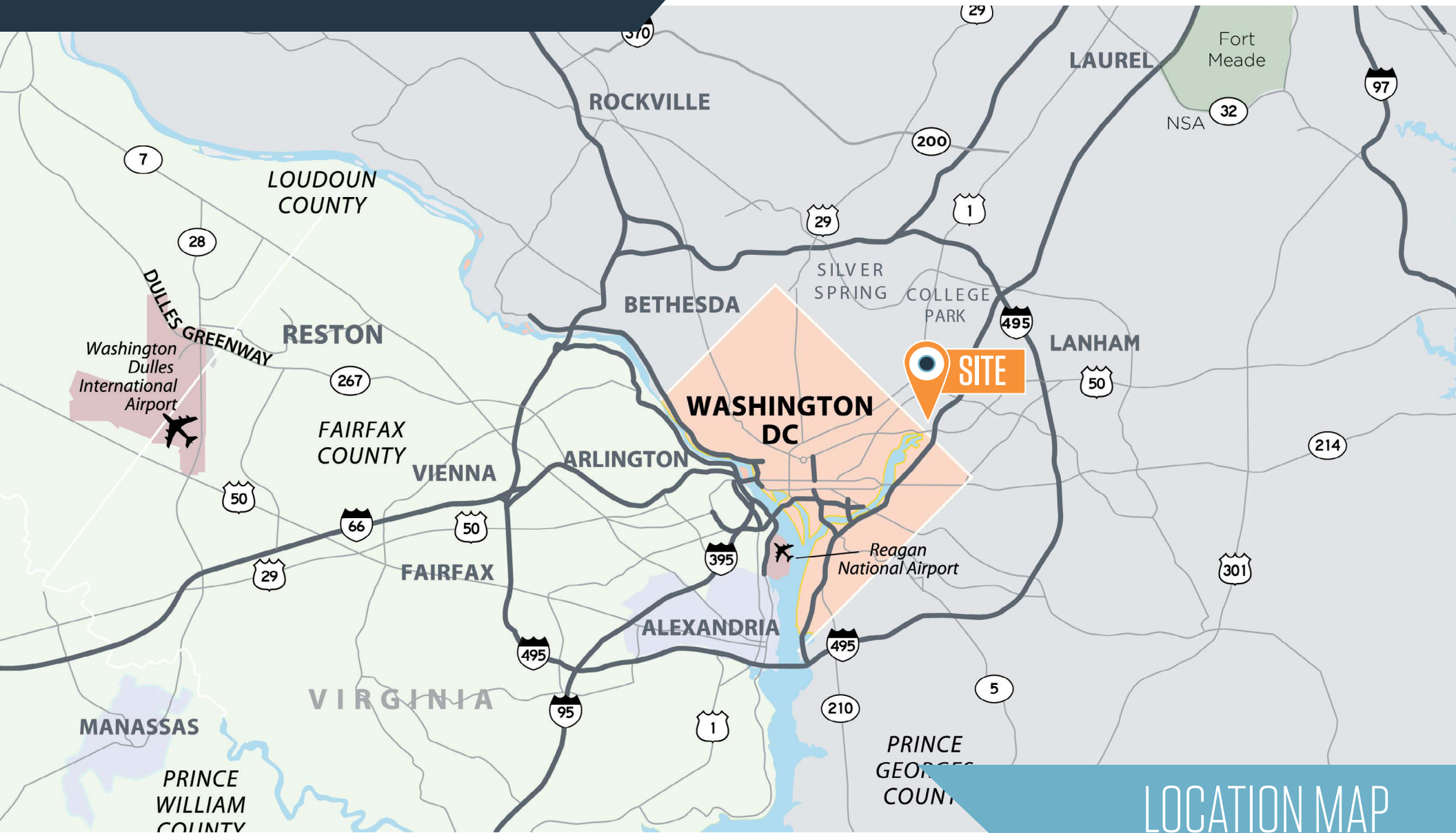
Aaron Carroll
acarroll@klnb.com
202-652-2333

1130 Connecticut Ave, NW, #600
Washington, DC 20036
klnb.com

NAI klnb

5150 LAWRENCE PLACE

Hyattsville, Maryland 20781
Prince George's County



LOCATION MAP

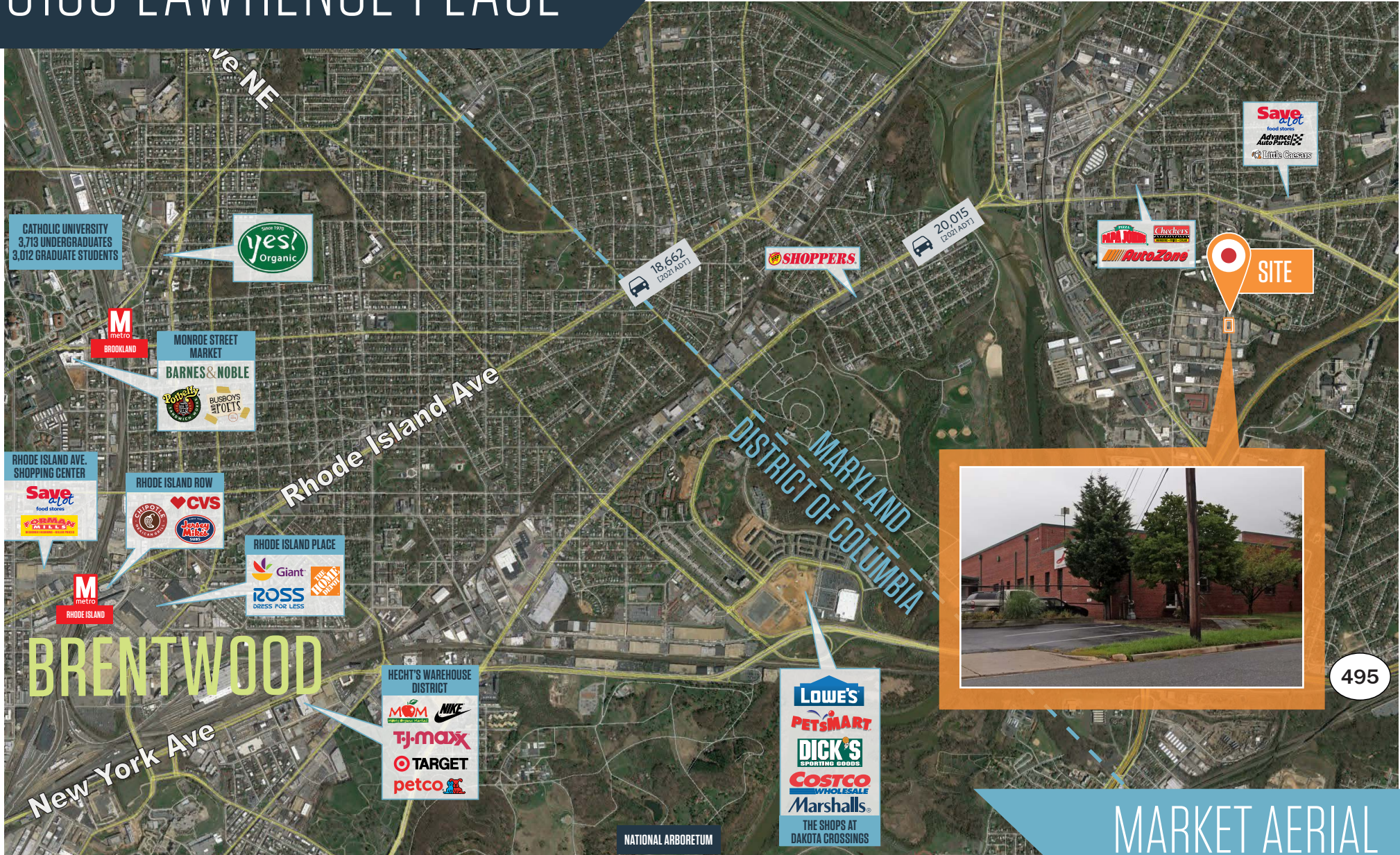
Aaron Carroll
acarroll@klnb.com
202-652-2333

1130 Connecticut Ave, NW, #600
Washington, DC 20036
klnb.com



5150 LAWRENCE PLACE

Hyattsville, Maryland 20781
Prince George's County



Aaron Carroll
acarroll@klnb.com
202-652-2333

1130 Connecticut Ave, NW, #600
Washington, DC 20036
klnb.com



5150 LAWRENCE PLACE

Hyattsville, Maryland 20781
Prince George's County

[CLICK TO VIEW PROPERTY WEBSITE](#)

For More Information, Please Contact:

Aaron Carroll

acarroll@klnb.com

202-652-2333

1130 Connecticut Ave, NW
Suite 600
Washington, DC 20036

klnb.com



[instagram.com/klnbcre](https://www.instagram.com/klnbcre)



[linkedin.com/company/klnb](https://www.linkedin.com/company/klnb)



[facebook.com/KLNBCRE](https://www.facebook.com/KLNBCRE)

While we have no reason to doubt the accuracy of any of the information supplied, we cannot, and do not, guarantee its accuracy. All information should be independently verified prior to a purchase or lease of the property. We are not responsible for errors, omissions, misuse, or misinterpretation of information contained herein and make no warranty of any kind, express or implied, with respect to the property or any other matters.

The logo for NAI klnb features the letters 'NAI' in a bold, dark blue font, followed by a stylized red and blue graphic element, and then the lowercase letters 'klnb' in a dark blue font.