



FOR LEASE

PROPERTY HIGHLIGHTS:

**Availability**

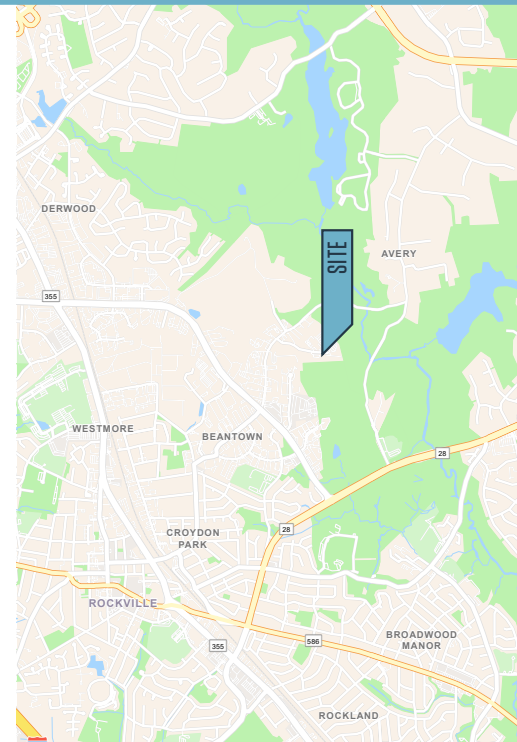
- Suite E: 13,446 SF

**Features**

- Clear Height: 24'
- Parking Spaces: 60

**Warehouse Facility Facts**

- Building Size: 48,300 SF
- Lot Size: 4.34 AC
- Year Built: 2001
- Construction: Masonry
- Water: City Water
- Sewer: City Sewer
- Heating: Gas
- Power Supply: Amps: 2,000
- Zoning: I-L (Light Industrial)



**Kenneth Fellows**  
kfellows@klnb.com  
301-222-0210

**Robert Pugh**  
rpugh@klnb.com  
301-222-0211

**Keiry Martinez**  
kmartinez@klnb.com  
703-334-5629

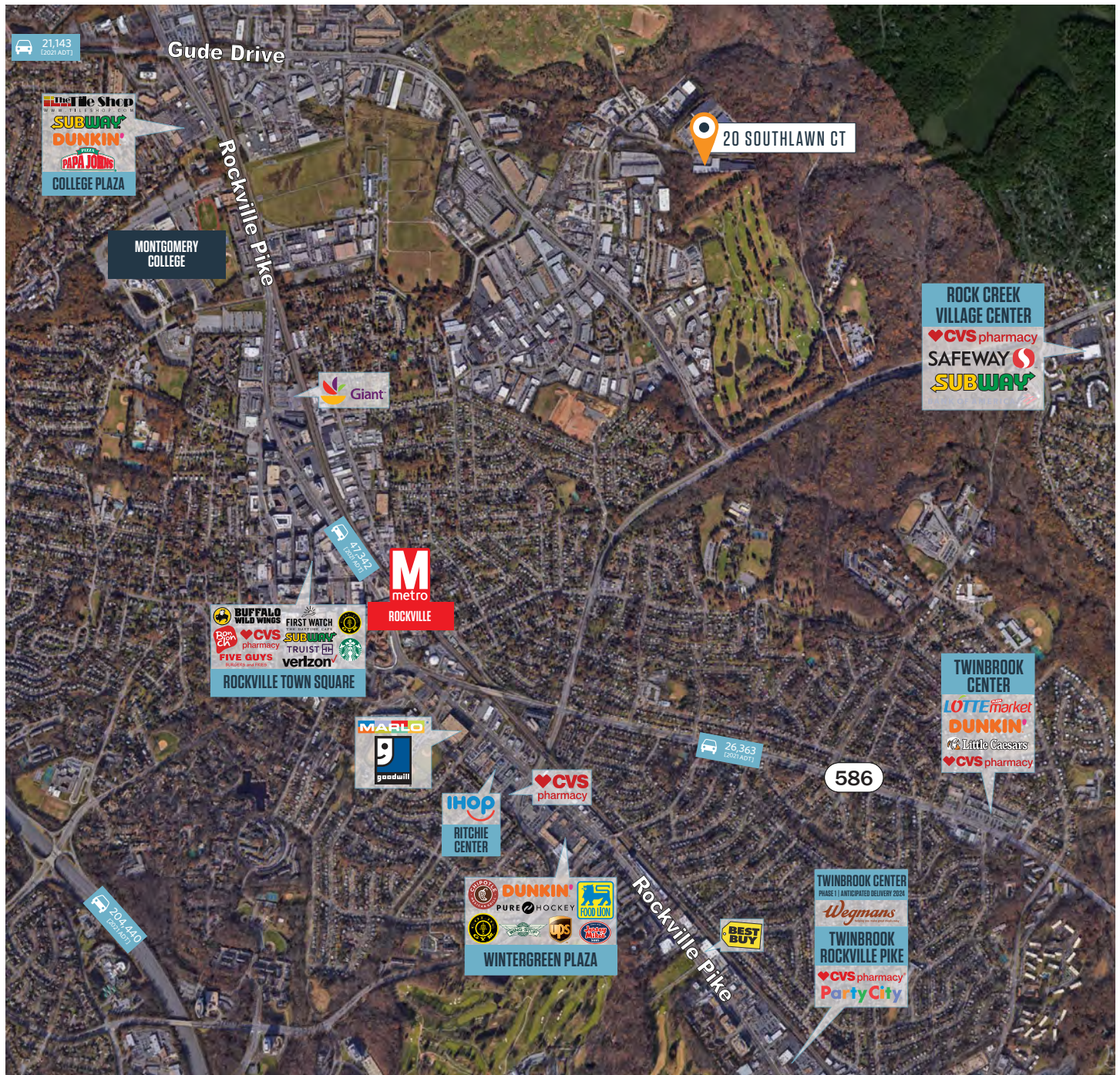
2273 Research Blvd, Suite 150  
Rockville, MD 20850  
**klnb.com**



# 20 SOUTHLAWN CT

Rockville, MD 20850 | Montgomery County

## MARKET AERIAL

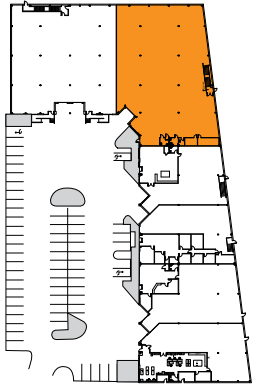


**Kenneth Fellows**  
kfellows@klnb.com  
301-222-0210

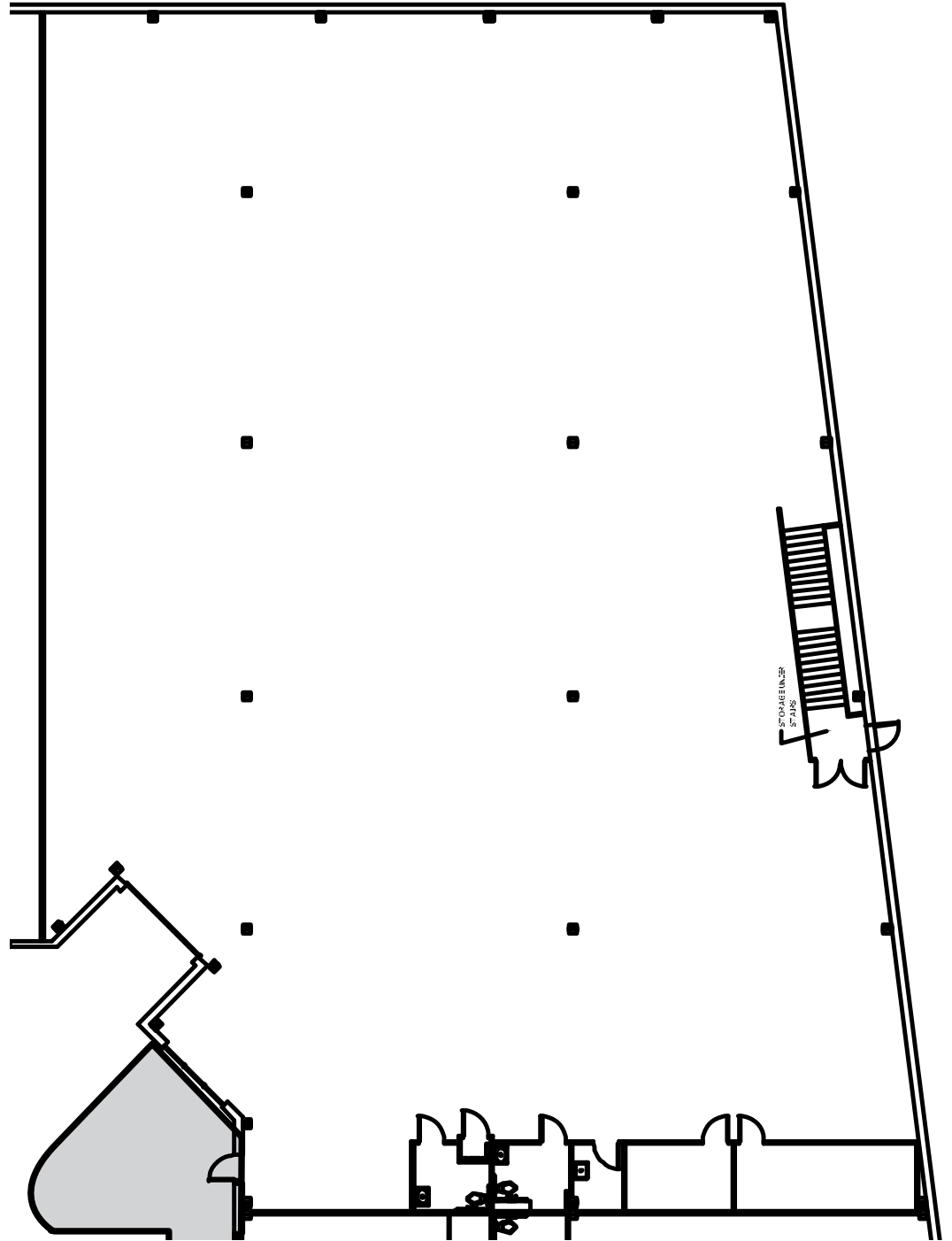
**Robert Pugh**  
rpugh@klnb.com  
301-222-0211

**Keiry Martinez**  
kmartinez@klnb.com  
703-334-5629

FLOOR PLAN



SUITE E  
13,446 SF





# 20 SOUTHLAWN CT

Rockville, MD 20850 | Montgomery County

[CLICK TO VIEW PROPERTY WEBSITE](#)

For More Information, Please Contact:

**Kenneth Fellows**

[kfellows@klnb.com](mailto:kfellows@klnb.com)

301-222-0210

**Robert Pugh**

[rpugh@klnb.com](mailto:rpugh@klnb.com)

301-222-0211

**Keiry Martinez**

[kmartinez@klnb.com](mailto:kmartinez@klnb.com)

703-334-5629

2273 Research Blvd, Suite 150  
Rockville, MD 20850

[klnb.com](http://klnb.com)



[instagram.com/klnbcre](https://www.instagram.com/klnbcre)



[linkedin.com/company/klnb](https://www.linkedin.com/company/klnb)



[facebook.com/KLNBCRE](https://www.facebook.com/KLNBCRE)

While we have no reason to doubt the accuracy of any of the information supplied, we cannot, and do not, guarantee its accuracy. All information should be independently verified prior to a purchase or lease of the property. We are not responsible for errors, omissions, misuse, or misinterpretation of information contained herein and make no warranty of any kind, express or implied, with respect to the property or any other matters.

**klnb**

**MP**

**MARCUS PARTNERS**