



OFFICE SPACE FOR LEASE

- Full Floor: 10,000 SF
- Rental Rate: \$27.00 PSF

PROPERTY OVERVIEW

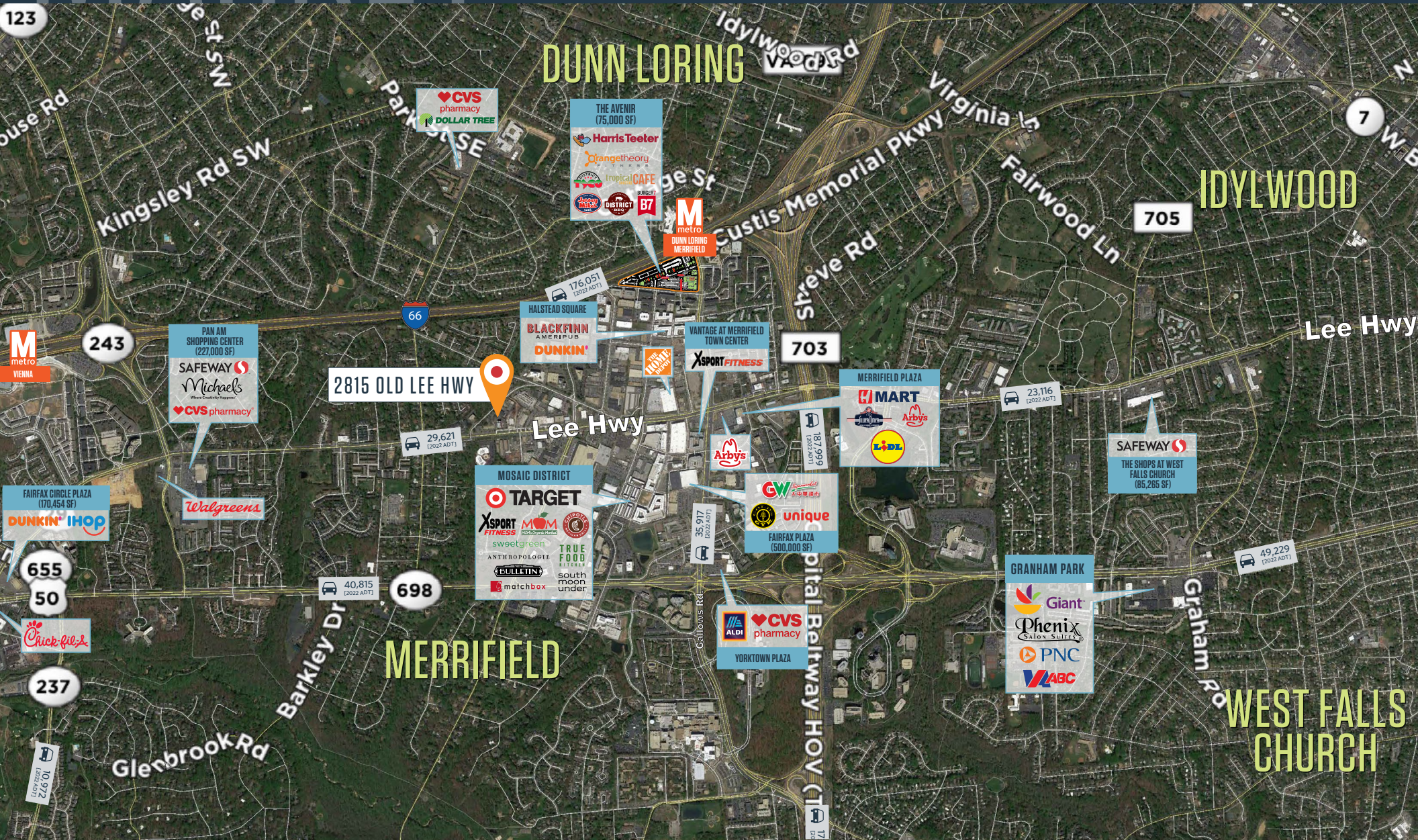
- The building features a gym, beautiful reception area, bike storage, print & copy room, and security system. It is highly accessible to Northern Virginia and Washington, DC. It is in close proximity to Dunn Loring Metro Station, Tysons Corner, the Mosaic District and major roadways.

TODD MCMANUS

tmcmanus@klnb.com | 703-334-5622

JESSE MARTIN

martin@klnb.com | 703-334-5620



TODD MCMANUS

tmcmanus@klnb.com | 703-334-5622

JESSE MARTIN

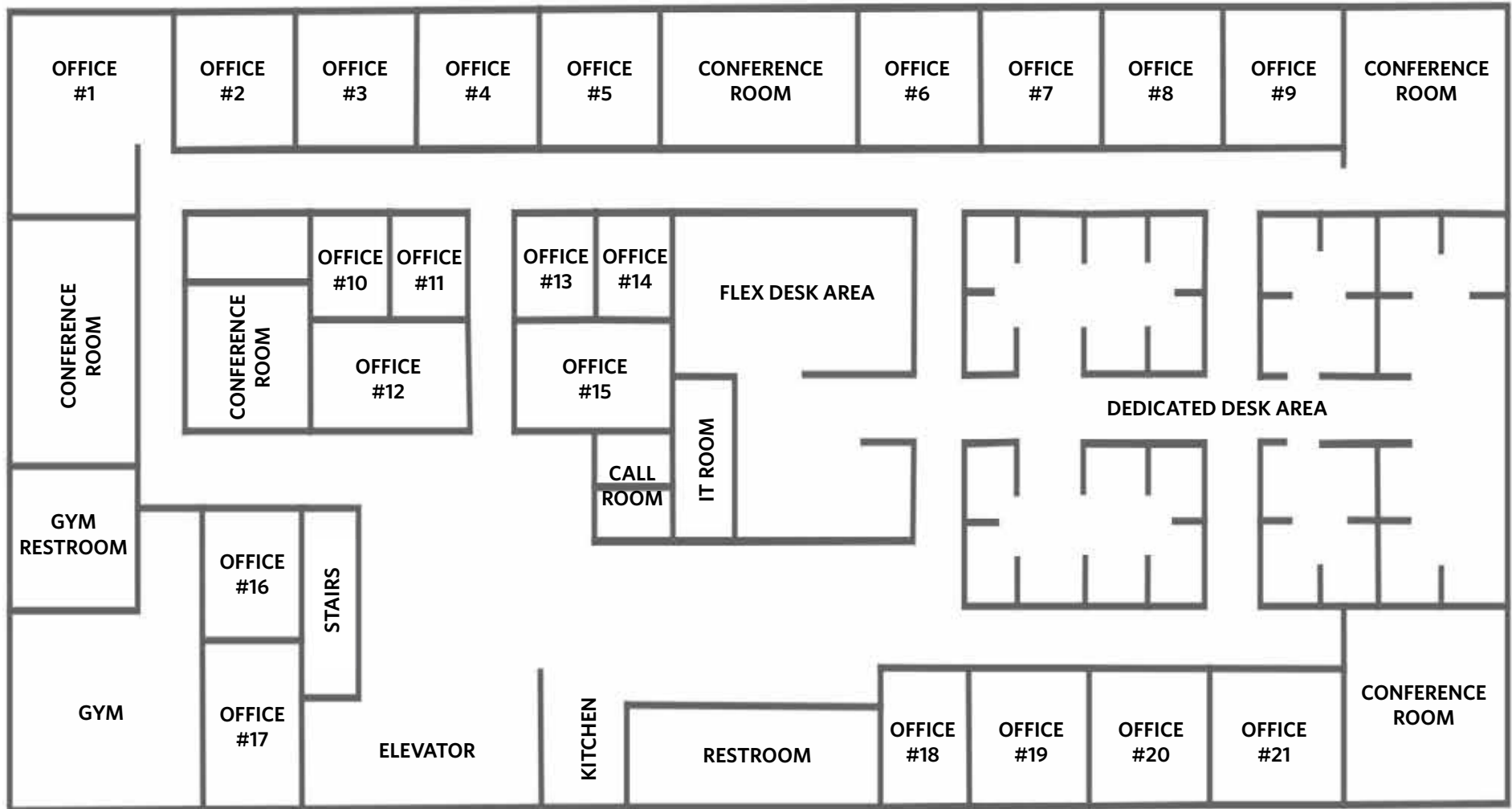
martin@klnb.com | 703-334-5620

FLOOR PLAN

2815 OLD LEE HWY

FAIRFAX, VA 22031, FAIRFAX COUNTY

2ND FLOOR: 10,000 SF



TODD MCMANUS

tmcmanus@klnb.com | 703-334-5622

JESSE MARTIN

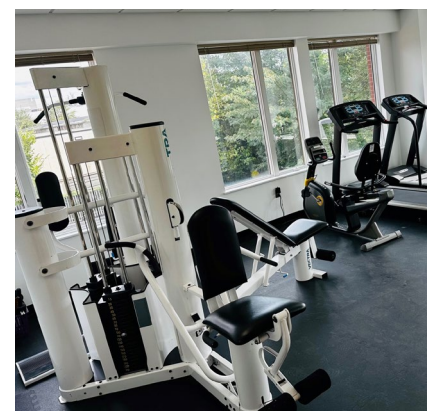
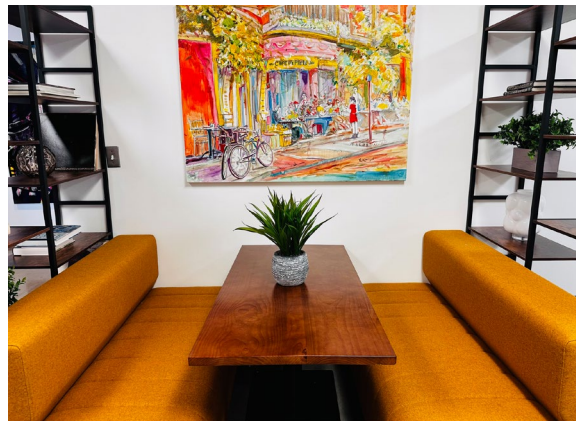
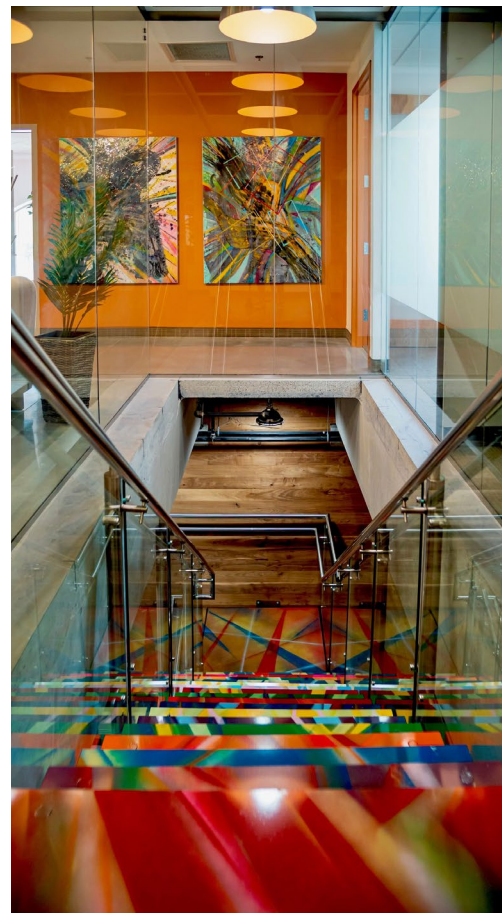
martin@klnb.com | 703-334-5620



PHOTOS

2815 OLD LEE HWY

FAIRFAX, VA 22031, FAIRFAX COUNTY



TODD MCMANUS

tmcmanus@klnb.com | 703-334-5622

JESSE MARTIN

jmartin@klnb.com | 703-334-5620

klnb



2815 OLD LEE HWY

FAIRFAX, VA 22031, FAIRFAX COUNTY

FOR MORE INFORMATION, PLEASE CONTACT:

TODD MCMANUS

tmcmanus@klnb.com
703-334-5622

JESSE MARTIN

martin@klnb.com
703-334-5620

8065 Leesburg Pike, Suite 700, Tysons, VA 22182

.....

klnb.com



instagram.com/klnbcre



linkedin.com/company/klnb



facebook.com/KLNBCRE

CLICK TO VIEW PROPERTY WEBSITE

While we have no reason to doubt the accuracy of any of the information supplied, we cannot, and do not, guarantee its accuracy. All information should be independently verified prior to a purchase or lease of the property. We are not responsible for errors, omissions, misuse, or misinterpretation of information contained herein and make no warranty of any kind, express or implied, with respect to the property or any other matters.