



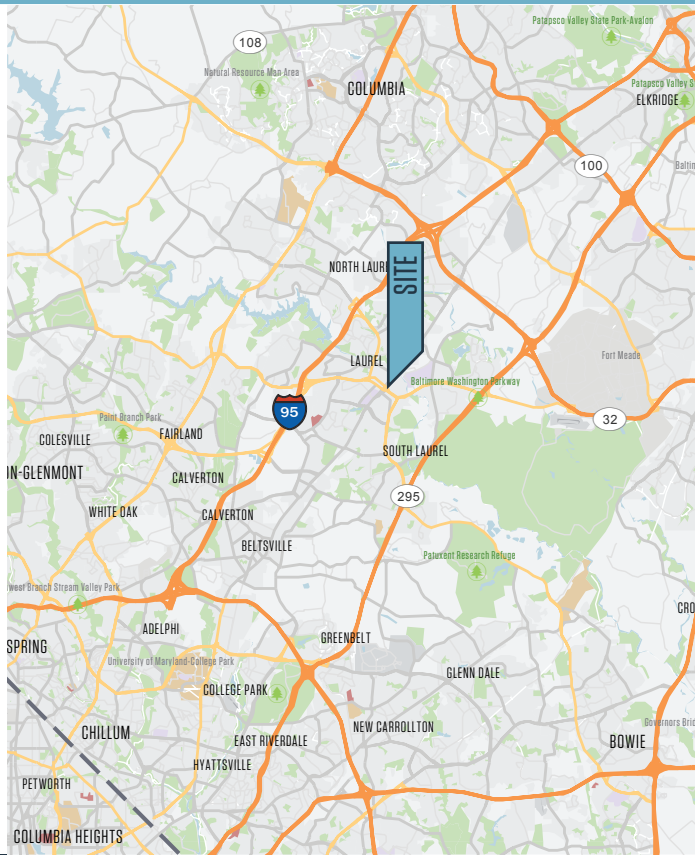
FOR LEASE

PROPERTY HIGHLIGHTS:

Suite Highlights

- **Available:** 2,500 square feet
- **Lease Rate:** \$19.00 PSF, plus electric & cleaning
- **Stories:** Two-stories
- **Parking:** 35 free surface spaces
- **Zoning:** City of Laurel, C-2
- **Access:** Nearby access to Route 1, 198, 295 & I-95

Nearby Amenities



Chuck Breitenother
cbreitenother@klnb.com
443-574-1422

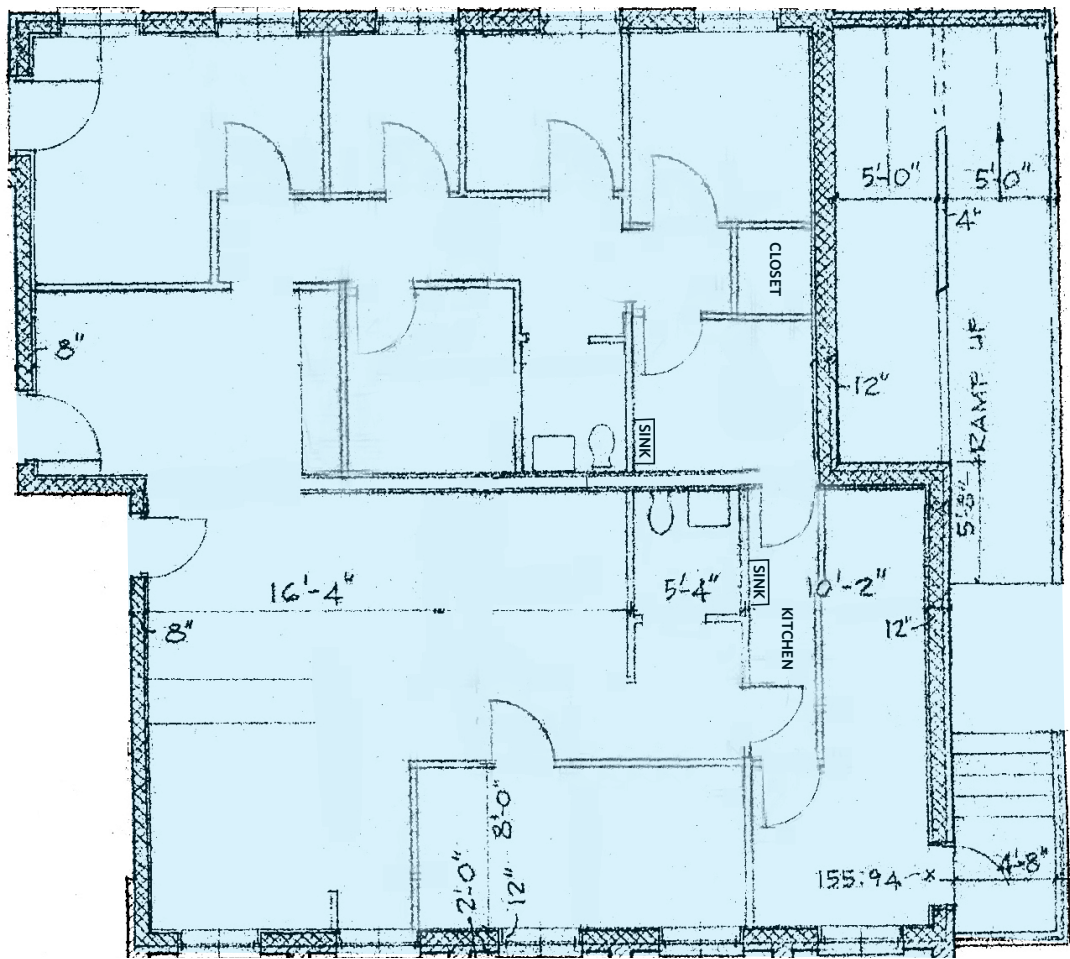
Austin Eber
aeber@klnb.com
443-574-1414

9881 Broken Land Pkwy, Suite 300
Columbia, MD 21046
klnb.com

300 THOMAS DRIVE

Laurel, MD 20707 | Prince George's County

FLOOR PLAN | 2,500 SQ. FT.



DEMOGRAPHICS | 3 MILE



POPULATION
104,733



AVERAGE H.H. SIZE
2.7



MEDIAN HH INCOME
\$96,060



MEDIAN AGE
36.3

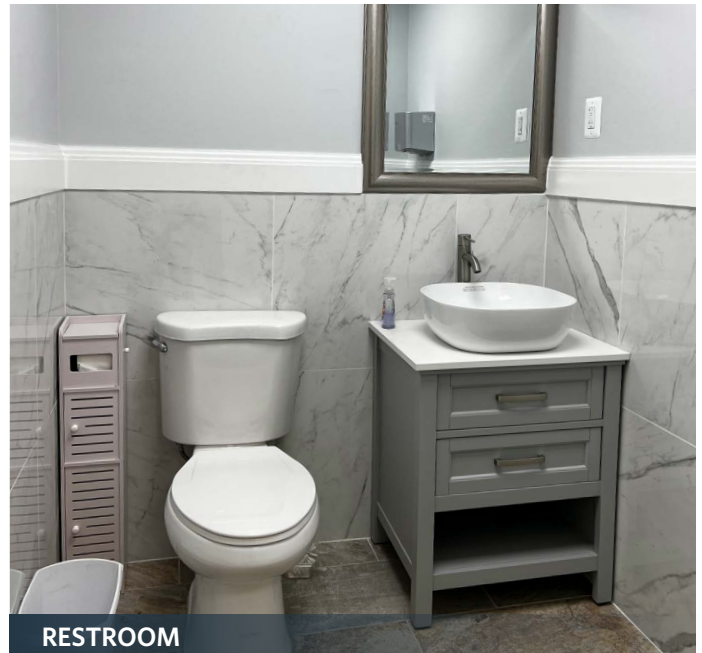
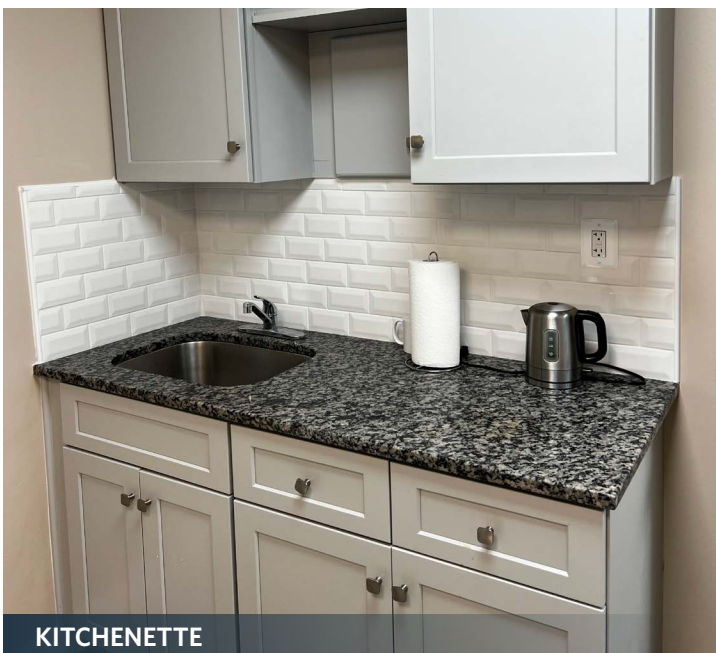


MEDIAN NET WORTH
\$162,023

Chuck Breitenother
cbreitenother@klnb.com
443-574-1422

Austin Eber
aeber@klnb.com
443-574-1414

PHOTOS



300 THOMAS DRIVE

Laurel MD 20707 | Prince George's County



MARKET AERIAL



While we have no reason to doubt the accuracy of any of the information supplied, we cannot, and do not, guarantee its accuracy. All information should be independently verified prior to a purchase or lease of the property. We are not responsible for errors, omissions, misuse, or misinterpretation of information contained herein and make no warranty of any kind, express or implied, with respect to the property or any other matters.

Chuck Breitenother
cbreitenother@klnb.com
443-574-1422

Austin Eber
aeber@klnb.com
443-574-1414

9881 Broken Land Parkway, Suite 300
Columbia, MD 21046
klnb.com