

NEARBY RETAILERS



RETAIL FOR GROUND LEASE

- Pad opportunities with unobstructed visibility along Crain Hwy (36,960 ADT) in La Plata.
- Strategically located in the Northern, dense retail node of the market across from Walmart and in proximity to major retail developments such as Rosewick Corner.
- Zoned Community Commercial (CC) in Charles County
- Ideal for fast food, automotive, self-storage uses and more.

VICTOR SALCIDO

vsalcido@klnb.com | 240-755-2704

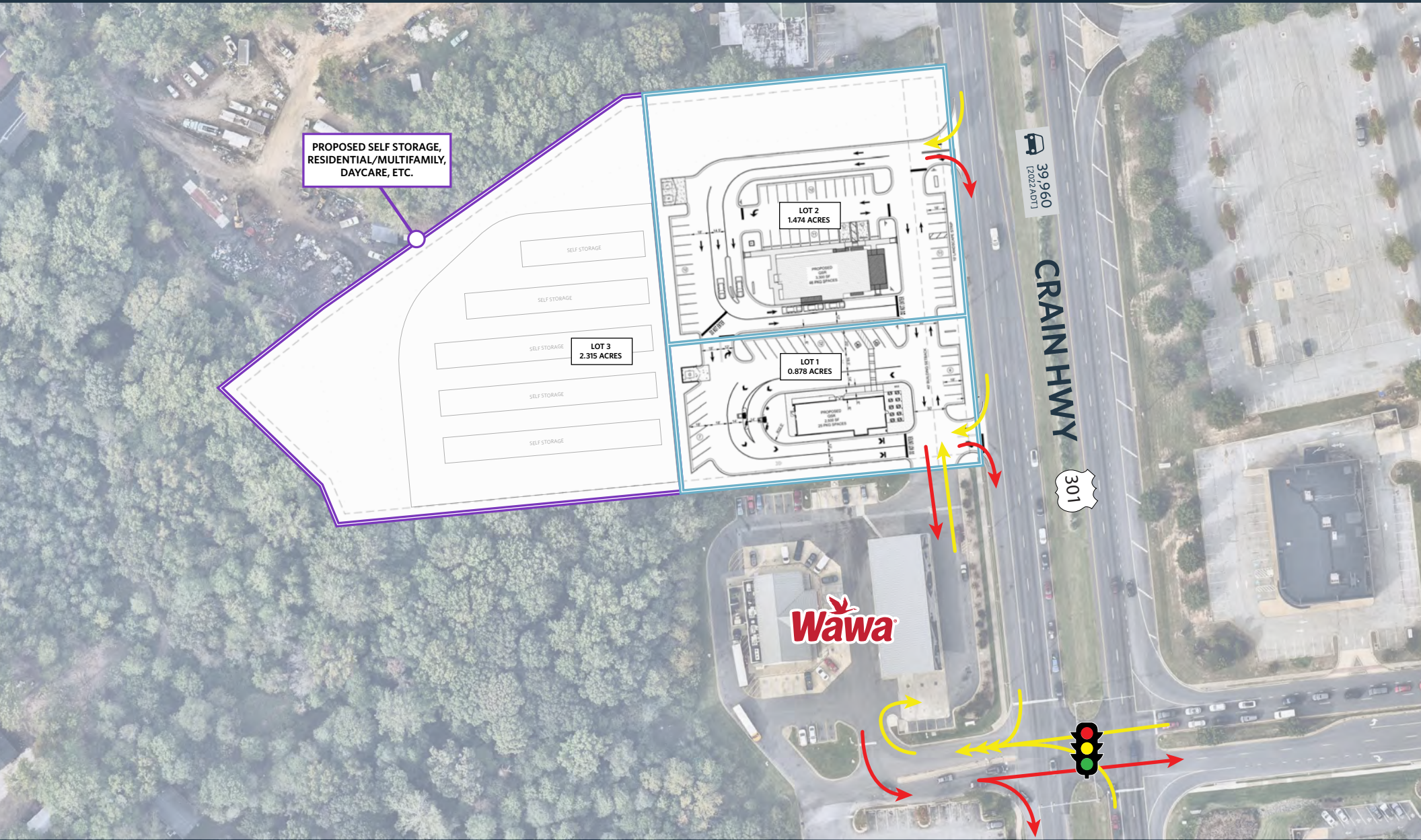
JOE MEKULSKI

jmekulski@klnb.com | 443-632-1343

CONCEPTUAL SITE PLAN

5925 CRAIN HWY

LA PLATA, MD 20646, CHARLES COUNTY



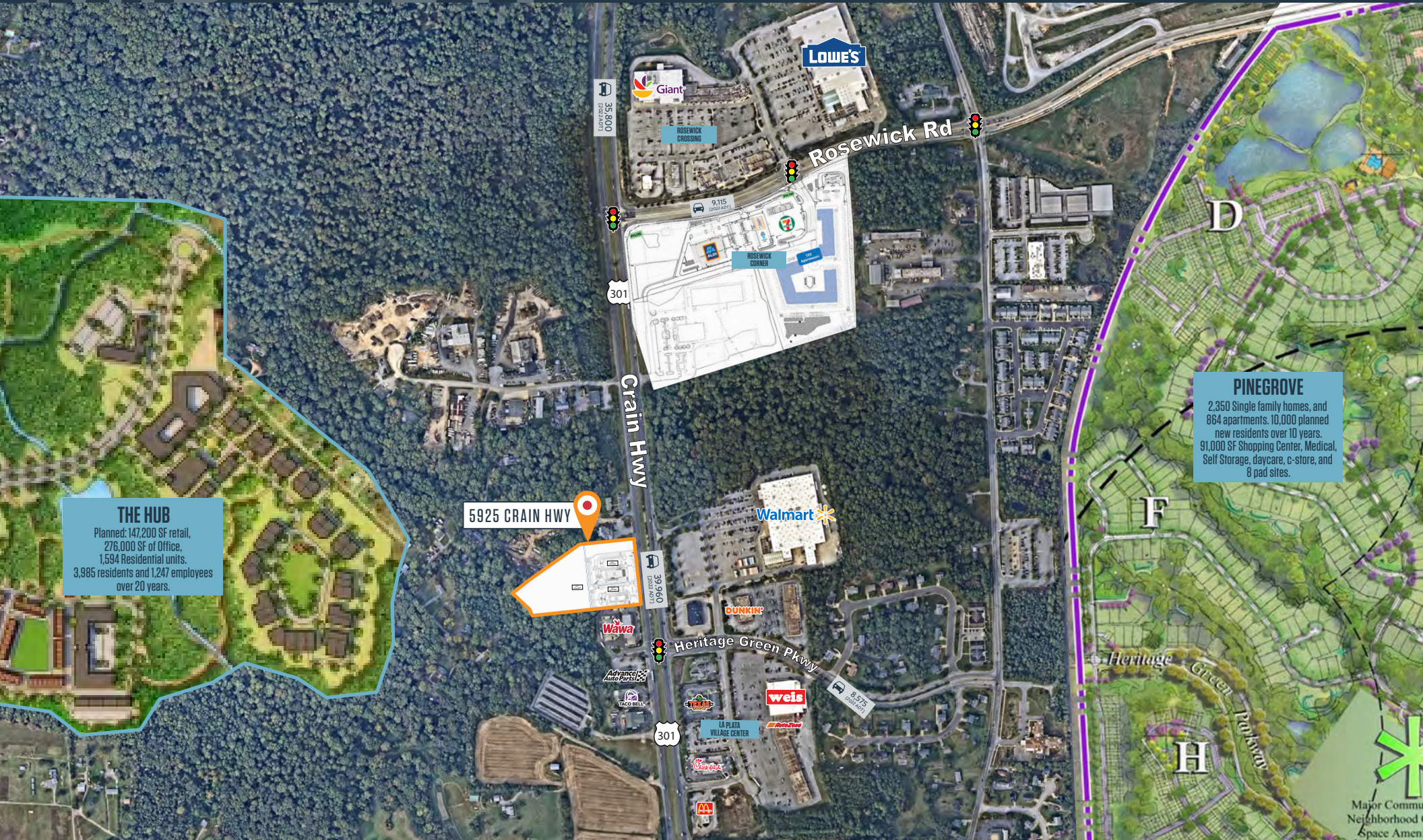
VICTOR SALCIDO

vsalcido@klnb.com | 240-755-2704

JOE MEKULSKI

jmekulski@klnb.com | 443-632-1343

klnb



THE HUB
Planned: 147,200 SF retail,
276,000 SF of Office,
1,594 Residential units.
3,985 residents and 1,247 employees
over 20 years.

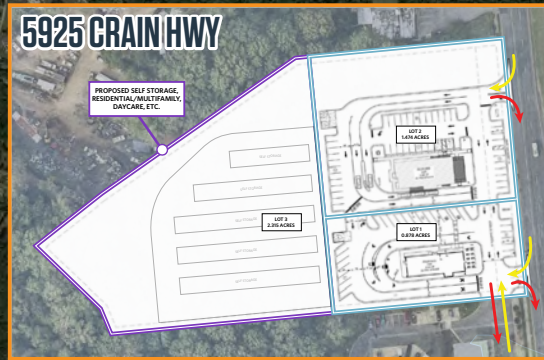
5925 CRAIN HWY

PINEGROVE
2,350 Single family homes, and
864 apartments. 10,000 planned
new residents over 10 years.
91,000 SF Shopping Center, Medical,
Self Storage, daycare, c-store, and
8 pad sites.

5925 CRAIN HWY

LA PLATA, MD 20646, CHARLES COUNTY

5925 CRAIN HWY



La Plata
Charles County | MD

klnb

While we have no reason to doubt the accuracy of any of the information supplied, we cannot, and do not, guarantee its accuracy.

7,484

PLANNED RESIDENTIAL UNITS

THE HUB
Planned: 147,200 SF retail,
276,000 SF of Office,
1,584 Residential units,
3,985 residents and 1,247 employees
over 20 years.

ROSEWICK CROSSING



ROSEWICK CORNER



301

ROSEWICK PROPERTY

VILLAGES AT ROSEWICK

Lowe's

9,715
(2022 ADT)

Walmart

weis

Chick-fil-A
AutoZone

LA PLATA VILLAGE CENTER

HAWTHORNE SHOPPING CENTER

11,980
(2022 ADT)

200
PLANNED RESIDENTIAL UNITS

LA PLATA PLAZA

SAFeway

Applebee's
Panera Bread
FIVE GUYS
petco

TARGET

CVS pharmacy

Walgreens

McDonald's

301

CHARLES COUNTY GOVERNMENT

CHARLES COUNTY COURTS

TOWN OF LA PLATA GOVERNMENT

22,650
(2022 ADT)

THE CHARLES REGIONAL MEDICAL CENTER

OUTBACK
DOLLAR TREE
Popeyes
KFC
LA PLATA SHOPPING CENTER

LA PLATA

VICTOR SALCIDO

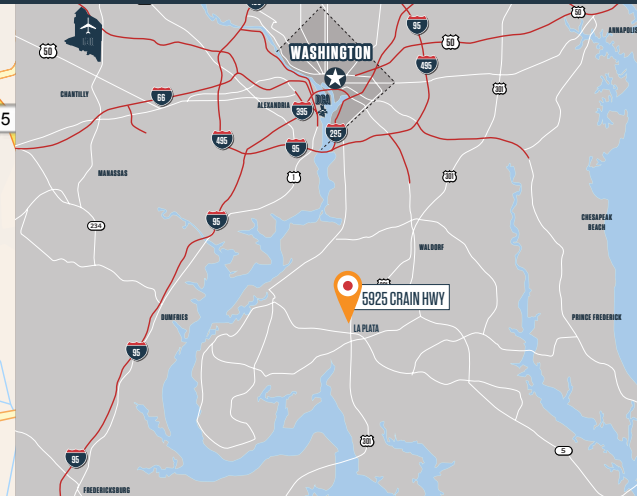
vsalcido@klnb.com | 240-755-2704

JOE MEKULSKI

jmekulski@klnb.com | 443-632-1343

klnb

LA PLATA, MD 20646, CHARLES COUNTY



8,575 ADT





5925 CRAIN HWY

LA PLATA, MD 20646, CHARLES COUNTY

FOR MORE INFORMATION, PLEASE CONTACT:

VICTOR SALCIDO

vsalcido@klnb.com
240-755-2704

JOE MEKULSKI

jmekulski@klnb.com
443-632-1343

8065 Leesburg Pike, Suite 700, Tysons, VA 22182

.....

klnb.com



instagram.com/klnbcre



linkedin.com/company/klnb



facebook.com/KLNBCRE

CLICK TO VIEW PROPERTY WEBSITE

While we have no reason to doubt the accuracy of any of the information supplied, we cannot, and do not, guarantee its accuracy. All information should be independently verified prior to a purchase or lease of the property. We are not responsible for errors, omissions, misuse, or misinterpretation of information contained herein and make no warranty of any kind, express or implied, with respect to the property or any other matters.