



600 WASHINGTON AVENUE

Towson, MD 21204 | Baltimore County



9,549 SF
Contiguous

PROPERTY HIGHLIGHTS:

- **Rentable Building Area:** 70,104 SF
- **Availabilities:**
 - **Suite 104:** 5,925 SF
 - **Suite 110:** 3,624 SF
 - **Suite 109:** 5,109 SF
 - **Suite 201A:** 1,500 SF
 - **Suite 302:** 2,800 SF
- **Parking:** 6 on-site spaces, nearby Tolbert Garage has 350 spaces
- **Zoning:** BM - DT
- **Electrical:** 277/480 volt, 3 phase, 4 wire
- **Signage:** Building signage above main entrance on Washington Boulevard

NEARBY AMENITIES:

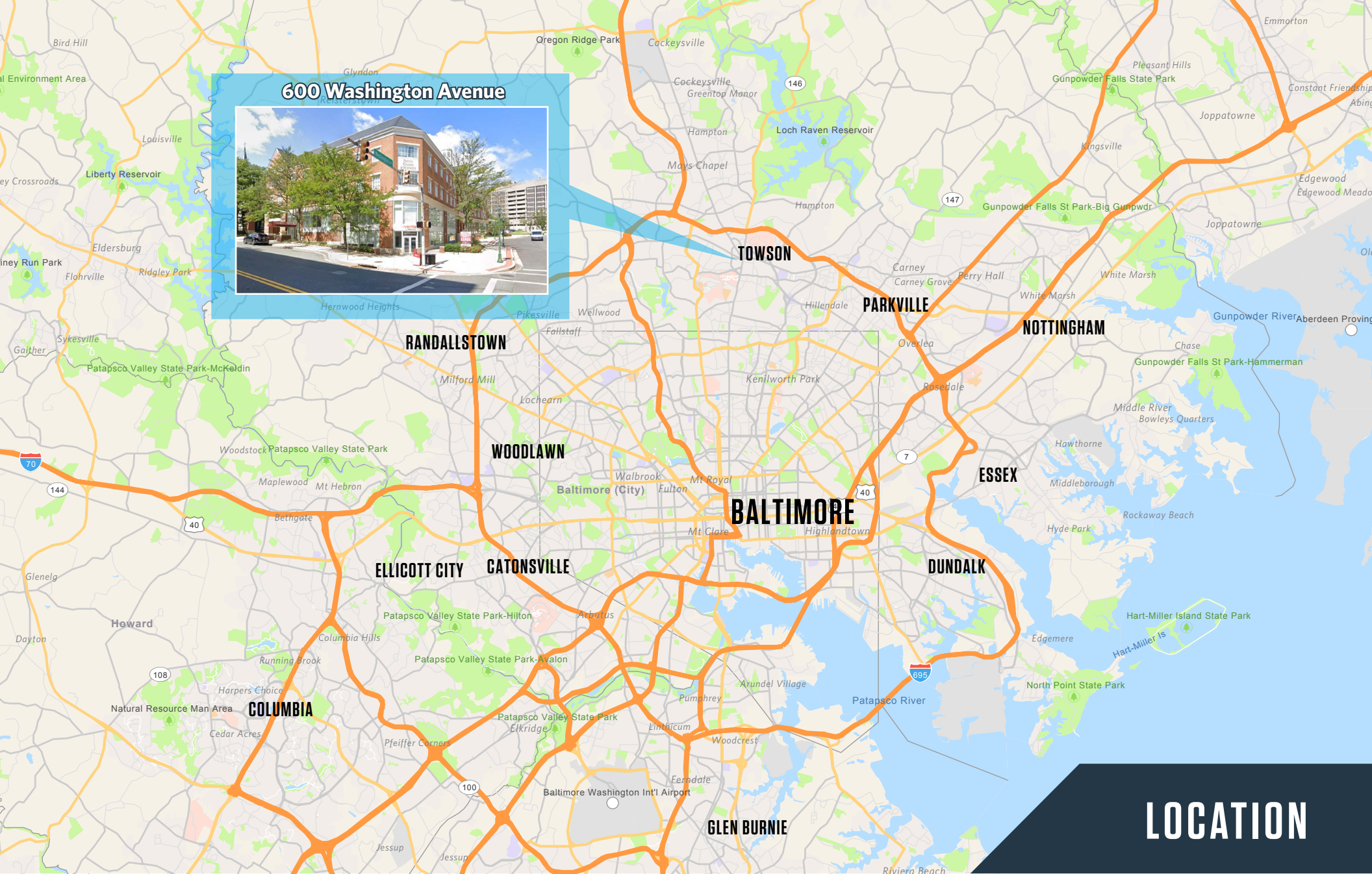


OFFICE SPACE FOR LEASE

AUSTIN EBER
aeber@klnb.com
443-574-1414

JOE NOLAN
jnolan@klnb.com
443-632-2065

klnb.com



600 Washington Avenue



LOCATION

600 WASHINGTON AVENUE

AUSTIN EBER
aeber@klnb.com
443-574-1414

JOE NOLAN
jnolan@klnb.com
443-632-2065



FLOOR PLANS

9,549 SF
Suite 104 & 110



DIRECT ENTRY

**POTENTIAL
EXTERIOR SIGNAGE**

600 WASHINGTON AVENUE

AUSTIN EBER
aeber@klnb.com
443-574-1414

JOE NOLAN
jnolan@klnb.com
443-632-2065



FLOOR PLAN

5,109 SF
Suite 109



600 WASHINGTON AVENUE

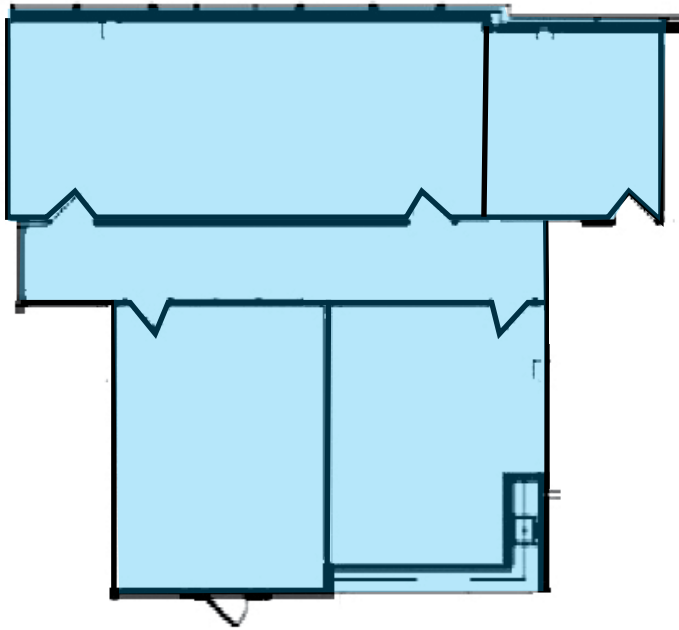
AUSTIN EBER
aeber@klnb.com
443-574-1414

JOE NOLAN
jnolan@klnb.com
443-632-2065

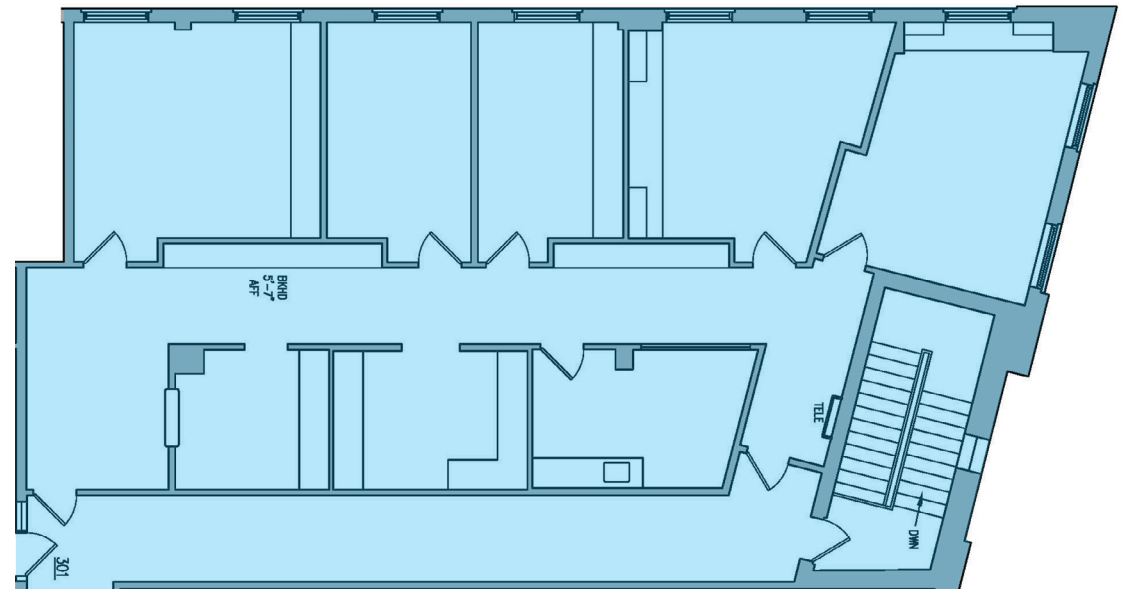


FLOOR PLANS

1,500 SF
Suite 201A



2,800 SF
Suite 302



600 WASHINGTON AVENUE

AUSTIN EBER
aeber@klnb.com
443-574-1414

JOE NOLAN
jnolan@klnb.com
443-632-2065





600 WASHINGTON AVENUE
Towson, MD 21204 | Baltimore County

CONTACT

AUSTIN EBER

aeber@klnb.com
443-574-1414

JOE NOLAN

jnolan@klnb.com
443-632-2065

9881 Broken Land Pkwy, Suite 300
Columbia, MD 21046

klnb.com

VISIT PROPERTY WEBSITE



While we have no reason to doubt the accuracy of any of the information supplied, we cannot, and do not, guarantee its accuracy. All information should be independently verified prior to a purchase or lease of the property. We are not responsible for errors, omissions, misuse, or misinterpretation of information contained herein and make no warranty of any kind, express or implied, with respect to the property or any other matters.