



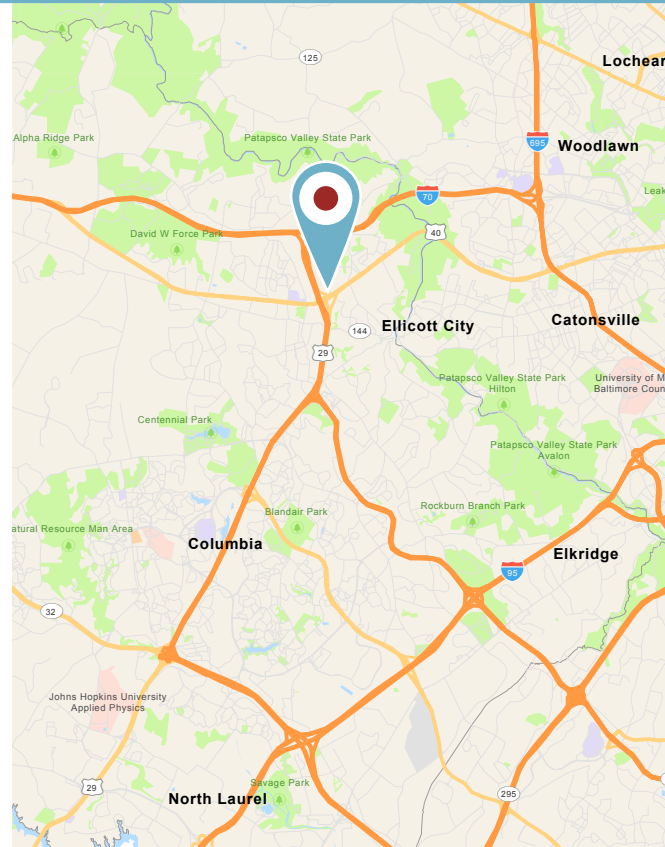
FOR LEASE

Suite Highlights

- **Suite 310:** » 3,487 square feet
 » Corner suite with 3 sides of glass
- **Rental Rate:** \$27.00 per square foot, Full Service

Building Highlights

- 3 story Class “A” office building with on-site deli
- 4 parking spaces per 1,000 square foot
- Reserved underground parking at ratio of 1/2,000 square feet
- Strategically located at the intersection of Route 29 and Route 40 easily accessible to banking, shopping, restaurants and Columbia Town Center



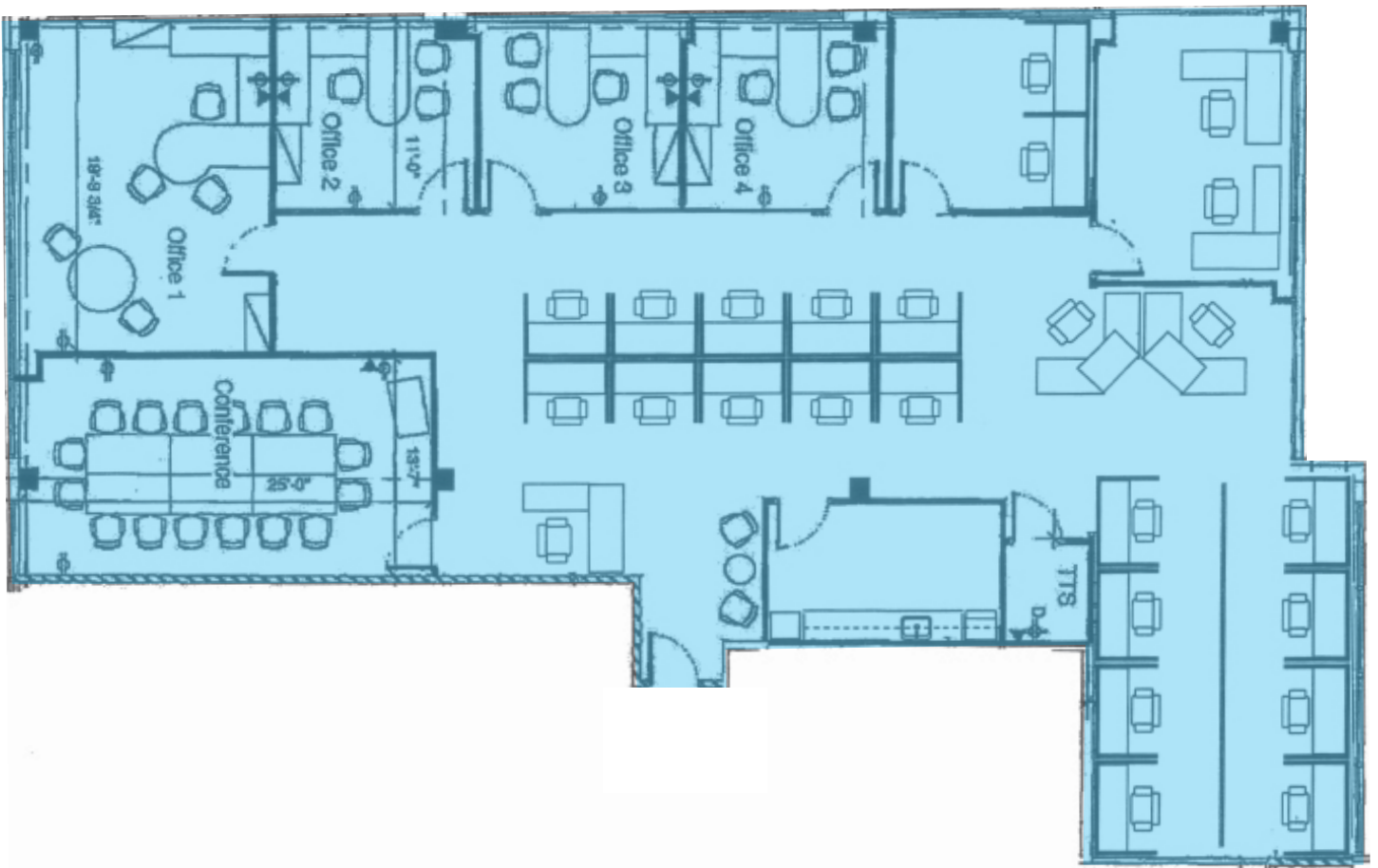
3290 N. RIDGE ROAD

Ellicott City, MD 21043 | Howard County

FLOOR PLAN

Suite 310

3,487 RSF Total



Chuck Breitenother
cbreitenother@klnb.com
443-574-1422

David J. Fritz, CCIM, SIOR
dfritz@klnb.com
443-574-1410

AERIAL VIEW



3290 N. RIDGE ROAD

Ellicott City, MD 21043 | Howard County

[CLICK TO VIEW PROPERTY WEBSITE](#)

For More Information, Please Contact:

Chuck Breitenother

cbreitenother@klnb.com

443-574-1422

David J. Fritz, CCIM, SIOR

dfritz@klnb.com

443-574-1410

9881 Broken Land Pkwy, Suite 300

Columbia, MD 21046

klnb.com



[instagram.com/klnbcre](https://www.instagram.com/klnbcre)



[linkedin.com/company/klnb](https://www.linkedin.com/company/klnb)



[facebook.com/KLNBCRE](https://www.facebook.com/KLNBCRE)

While we have no reason to doubt the accuracy of any of the information supplied, we cannot, and do not, guarantee its accuracy. All information should be independently verified prior to a purchase or lease of the property. We are not responsible for errors, omissions, misuse, or misinterpretation of information contained herein and make no warranty of any kind, express or implied, with respect to the property or any other matters.

