

Nalimb

11620
RED RUN
BOULEVARD

REISTERSTOWN, MD 21136



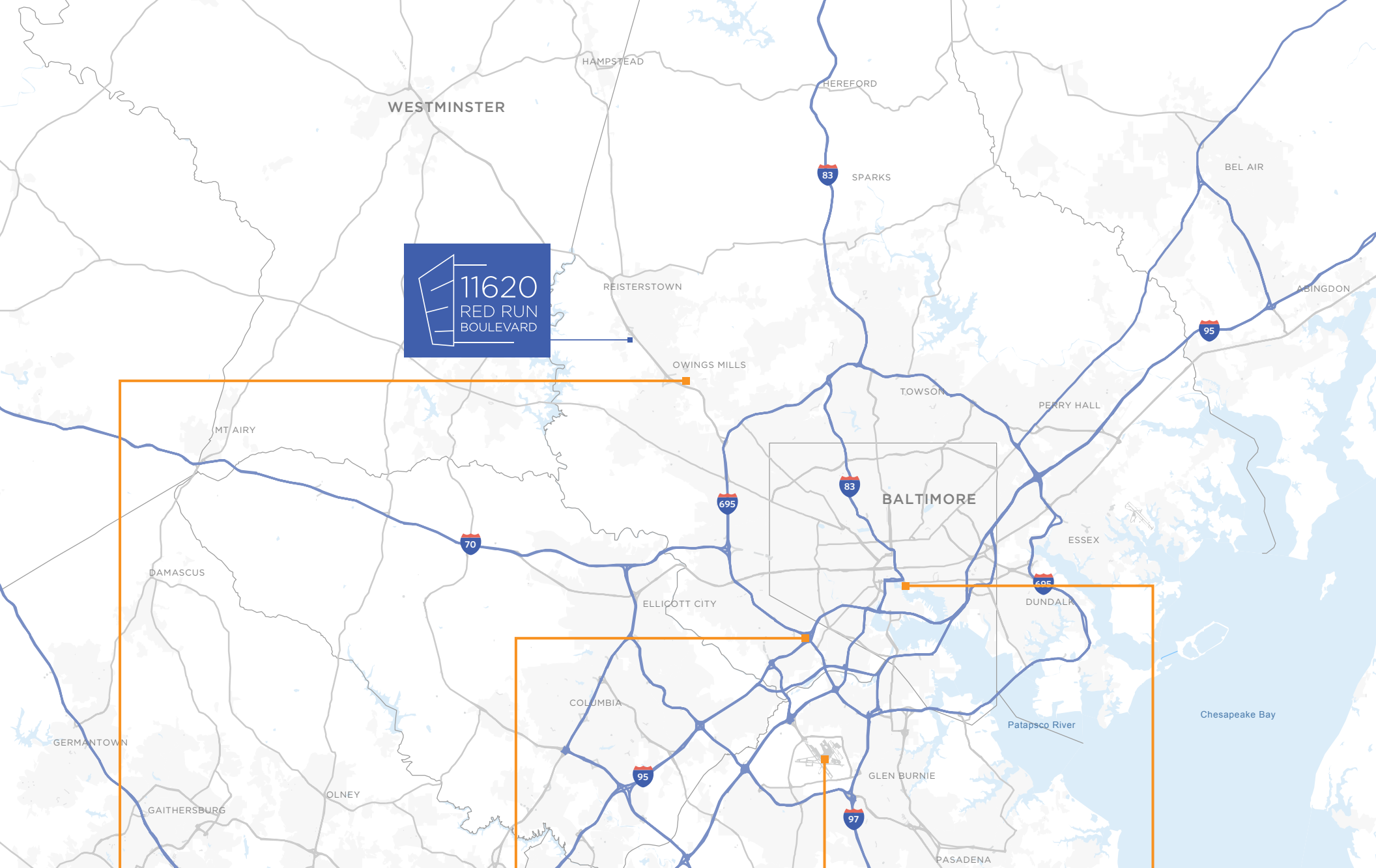
Lineage®



PROPERTY HIGHLIGHTS

- Turn-key Class A office building
- 2-story office building totalling $\pm 40,000$ SF
- Built in 2011
- Plug-n-Play
- Furniture by Herman Miller included
- Parking Ratio: 4/1,000 SF
- Available: First Floor - 3,000-20,000 SF
- Lease Rate: \$23.00/SF, Full Service
- Access: 7 minutes to I-795 and 9 minutes to I-695
- Minutes from Owings Mills and Reisterstown
- On-site Property Management
- Additional storage or fitness area within tenant suite





11620
RED RUN
BOULEVARD



4 MILES
to Owings Mills Metro



17 MILES
to I-95



24 MILES
to BWI Airport



23 MILES
to Inner Harbor

LOCATION

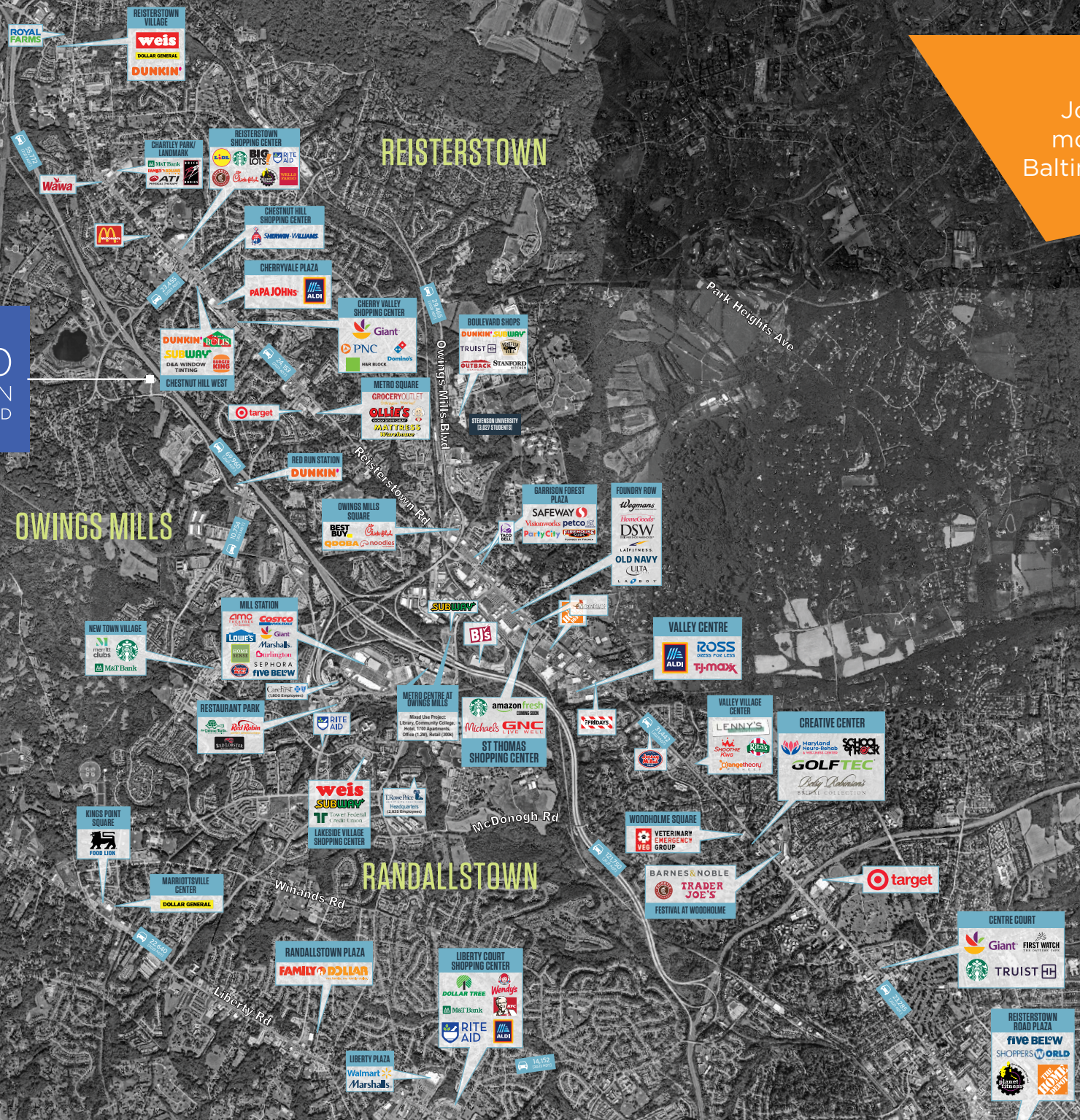
Join one of the
most accessible
Baltimore suburbs

11620
RED RUN
BOULEVARD

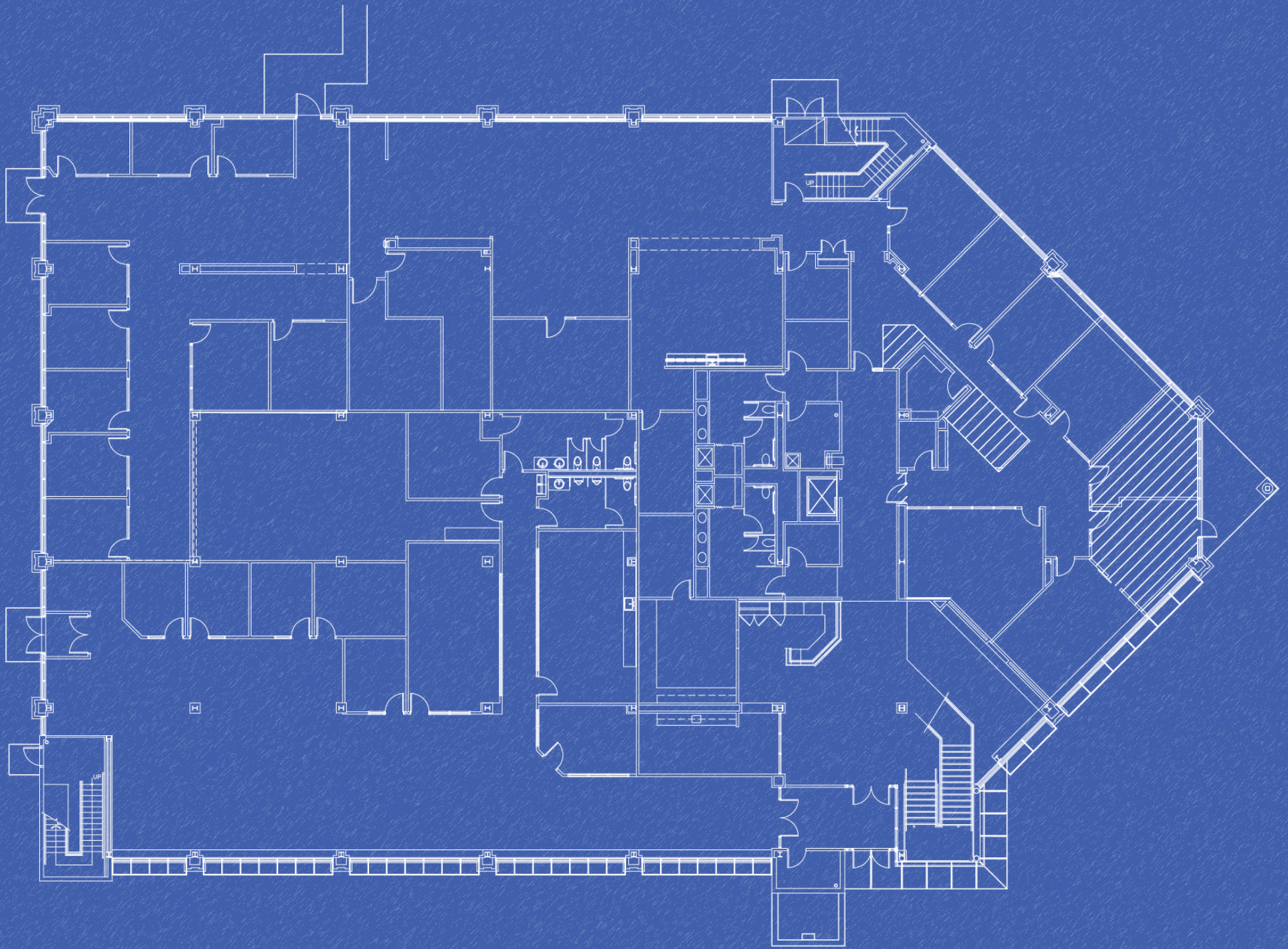
REISTERSTOWN

OWINGS MILLS

RANDALLSTOWN







FLOOR PLAN



For more information, please contact:

CHRIS WRIGHT

cwright@klnb.com

443-914-2600

MIKE MULL

mmull@gardnercr.com

443-585-3999

100 West Road | Suite 505 | Towson, MD | 21204

While we have no reason to doubt the accuracy of any of the information supplied, we cannot, and do not, guarantee its accuracy. All information should be independently verified prior to a purchase or lease of the property. We are not responsible for errors, omissions, misuse, or misinterpretation of information contained herein and make no warranty of any kind, express or implied, with respect to the property or any other matters.