

WAVERLY WOODS VILLAGE CENTER

10775 Birmingham Way, Woodstock, MD 21163
Howard County



RETAIL FOR LEASE

JOIN:

weis

KYLOS
SPORTS MEDICINE

Celebree
SCHOOL

CHASE
Great Clips

SUBWAY

UNITED STATES
POSTAL SERVICE

- 103,000 SF grocery anchored shopping center.
- Available space ranges from 1,398 – 2,281 SF.
- Center is located in the heart of the residential population and regionally located off I-70 and Marriottsville Road.
- Affluent and educated area demographics.

Matt Copeland
mcopeland@klnb.com
443-632-2051

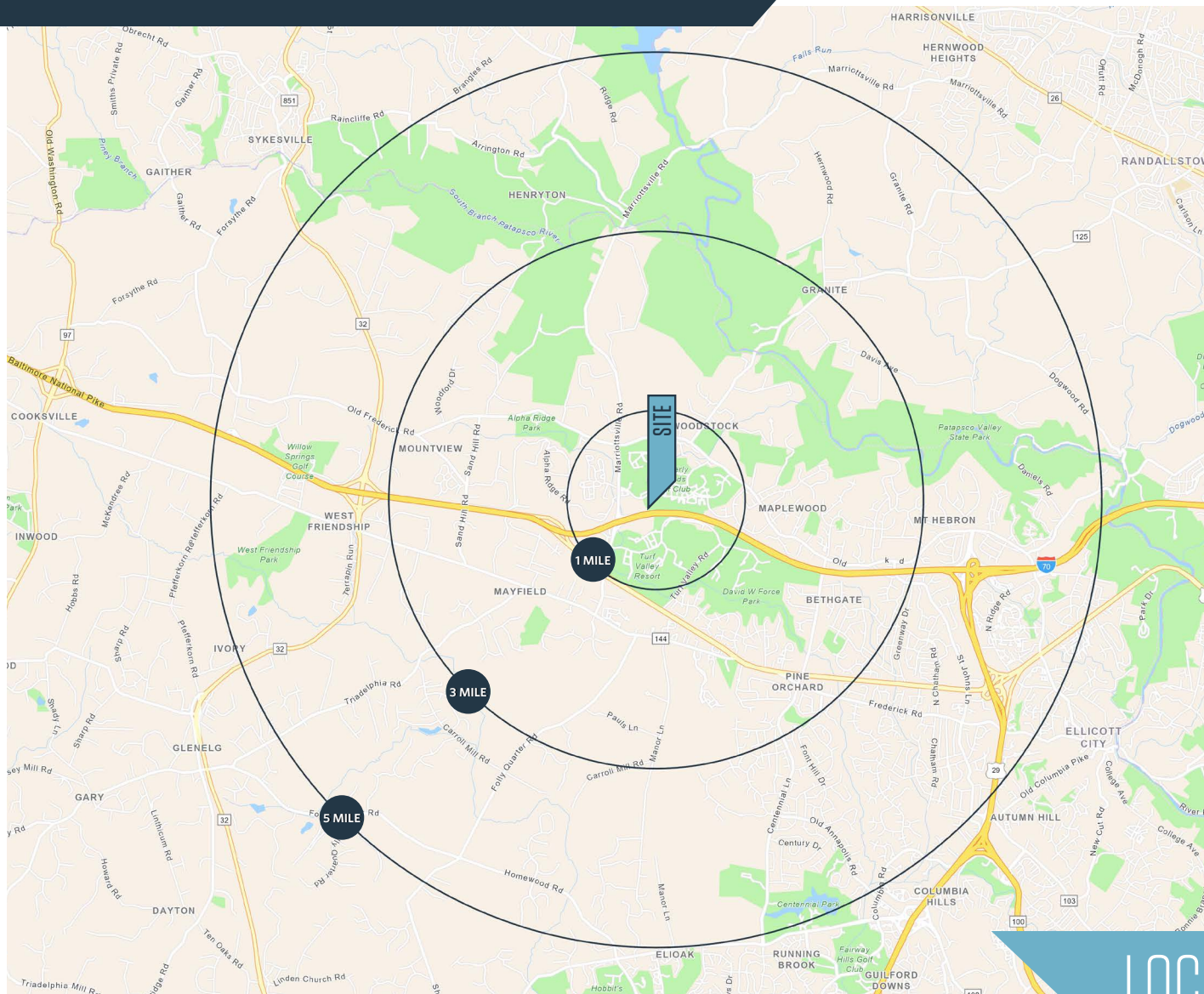
Michael Ginsburg
mginsburg@klnb.com
443-632-2041

100 West Road, Suite 505
Towson, MD 21204
klnb.com

klnb

WAVERLY WOODS VILLAGE CENTER

10775 Birmingham Way, Woodstock, MD 21163
Howard County



AVAILABLE SPACE

- 2,281 SF
[Corner Space]
- 1,600 SF
[Former Nail Salon]
- 1,398 SF

DEMOGRAPHICS | 2023:

1-MILE	3-MILE	5-MILE
Population		
6,887	28,208	70,227
Daytime Population		
5,653	21,025	56,335
Households		
2,490	9,576	23,985
Average HH Income		
\$188,406	\$225,272	\$213,278

[CLICK TO DOWNLOAD DEMOGRAPHIC REPORT](#)

TRAFFIC COUNTS | 2022:

Marriottsville Rd	12,815 ADT
I-70	79,171 ADT

LOCATION & DEMOGRAPHICS

Matt Copeland
mcopeland@klnb.com
443-632-2051

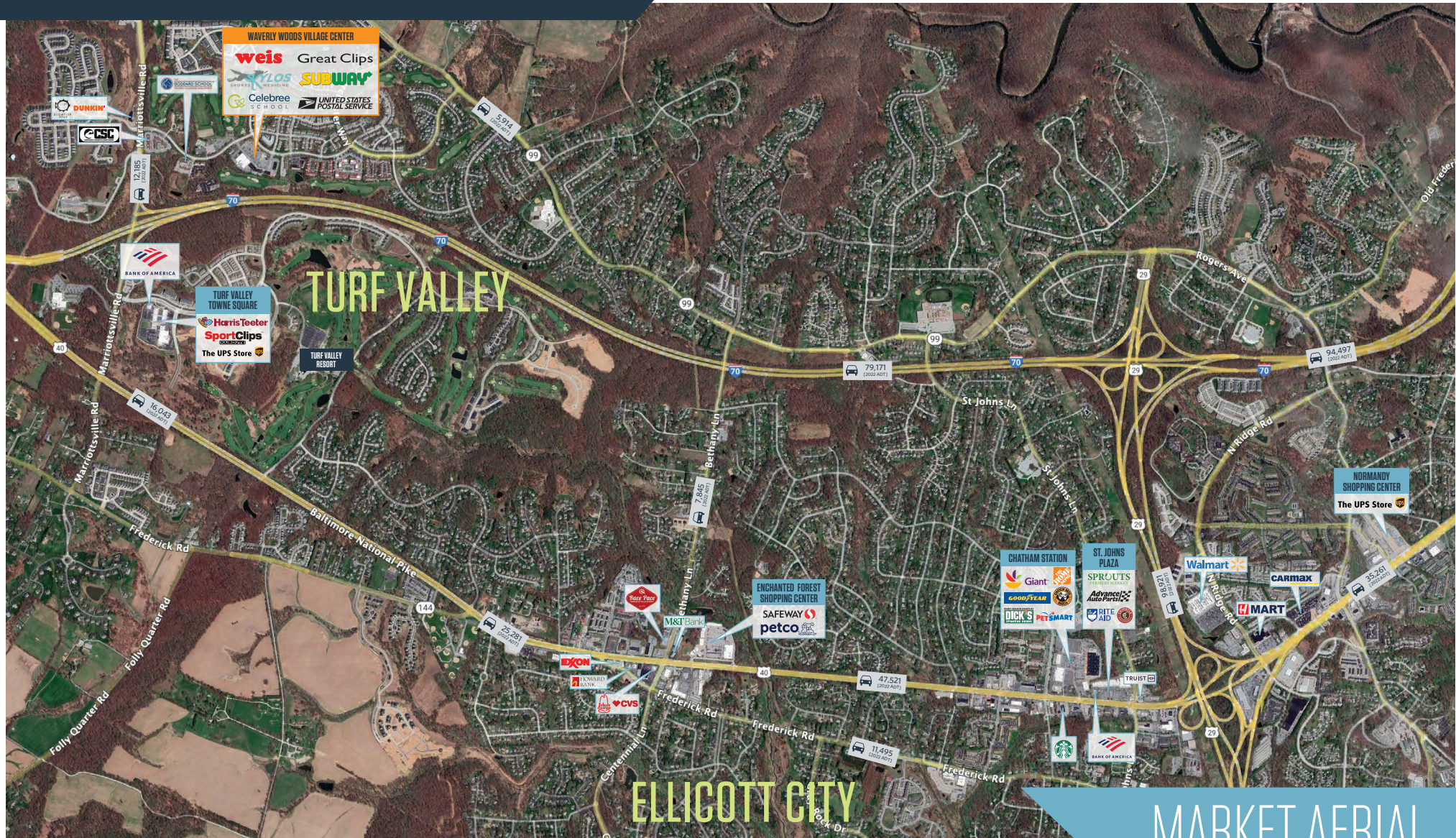
Michael Ginsburg
mginsburg@klnb.com
443-632-2041

100 West Road, Suite 505
Towson, MD 21204
klnb.com



WAVERLY WOODS VILLAGE CENTER

10775 Birmingham Way, Woodstock, MD 21163
Howard County



MARKET AERIAL

Matt Copeland
mcopeland@klnb.com
443-632-2051

Michael Ginsburg
mginsburg@klnb.com
443-632-2041

100 West Road, Suite 505
Towson, MD 21204
klnb.com

klnb

WAVERLY WOODS VILLAGE CENTER

10775 Birmingham Way, Woodstock, MD 21163
Howard County



MIDVIEW AERIAL

Matt Copeland
mcopeland@klnb.com
443-632-2051

Michael Ginsburg
mginsburg@klnb.com
443-632-2041

100 West Road, Suite 505
Towson, MD 21204
klnb.com

klnb

WAVERLY WOODS VILLAGE CENTER

10775 Birmingham Way, Woodstock, MD 21163
Howard County



Matt Copeland
mcopeland@klnb.com
443-632-2051

Michael Ginsburg
mginsburg@klnb.com
443-632-2041

100 West Road, Suite 505
Towson, MD 21204
klnb.com

klnb

WAVERLY WOODS VILLAGE CENTER

10775 Birmingham Way, Woodstock, MD 21163
Howard County

[CLICK TO VIEW PROPERTY WEBSITE](#)

For More Information, Please Contact:

Matt Copeland

mcopeland@klnb.com
443-632-2051

Michael Ginsburg

mginsburg@klnb.com
443-632-2041

100 West Road, Suite 505
Towson, MD 21204

klnb.com



[instagram.com/klnbcre](https://www.instagram.com/klnbcre)



[linkedin.com/company/klnb](https://www.linkedin.com/company/klnb)



[facebook.com/KLNBCRE](https://www.facebook.com/KLNBCRE)

While we have no reason to doubt the accuracy of any of the information supplied, we cannot, and do not, guarantee its accuracy. All information should be independently verified prior to a purchase or lease of the property. We are not responsible for errors, omissions, misuse, or misinterpretation of information contained herein and make no warranty of any kind, express or implied, with respect to the property or any other matters.

klnb