



## FOR LEASE

### PROPERTY HIGHLIGHTS:

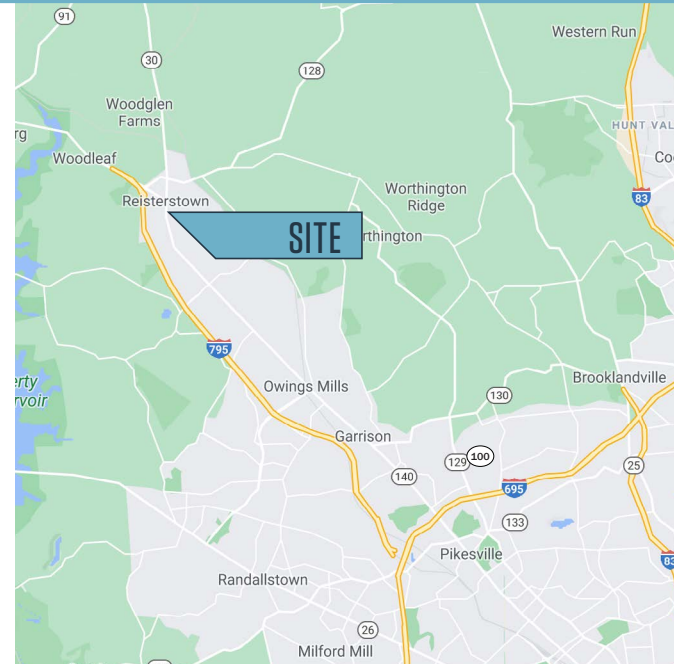
#### Suite Highlights

- **Available Suites:**
  - » 25 Main St., 2<sup>nd</sup> Floor, Suite 200: 4,287 SF (office)
  - » 21 C Main St., 1<sup>st</sup> Floor: 946 SF (retail);  
2<sup>nd</sup> generation restaurant
  - » 21 G Main St., 1<sup>st</sup> Floor: 940 SF (retail)
- **Surface Parking:** Available at a ratio of 4/1,000 SF

#### Building Highlights

- Three-story Class B office building totaling 23,926 SF
- Direct access off elevator
- Excellent access to Routes 30, 140 & 128 and I-795

### NEARBY AMENITIES:




**DOWNLOAD PHOTOS**  
 2<sup>ND</sup> GENERATION RESTAURANT  
 SPACE - SUITE 21 C

Steele Stanwick  
sstanwick@klnb.com  
443-574-1420

Rachel Klein  
rklein@klnb.com  
443-632-2087

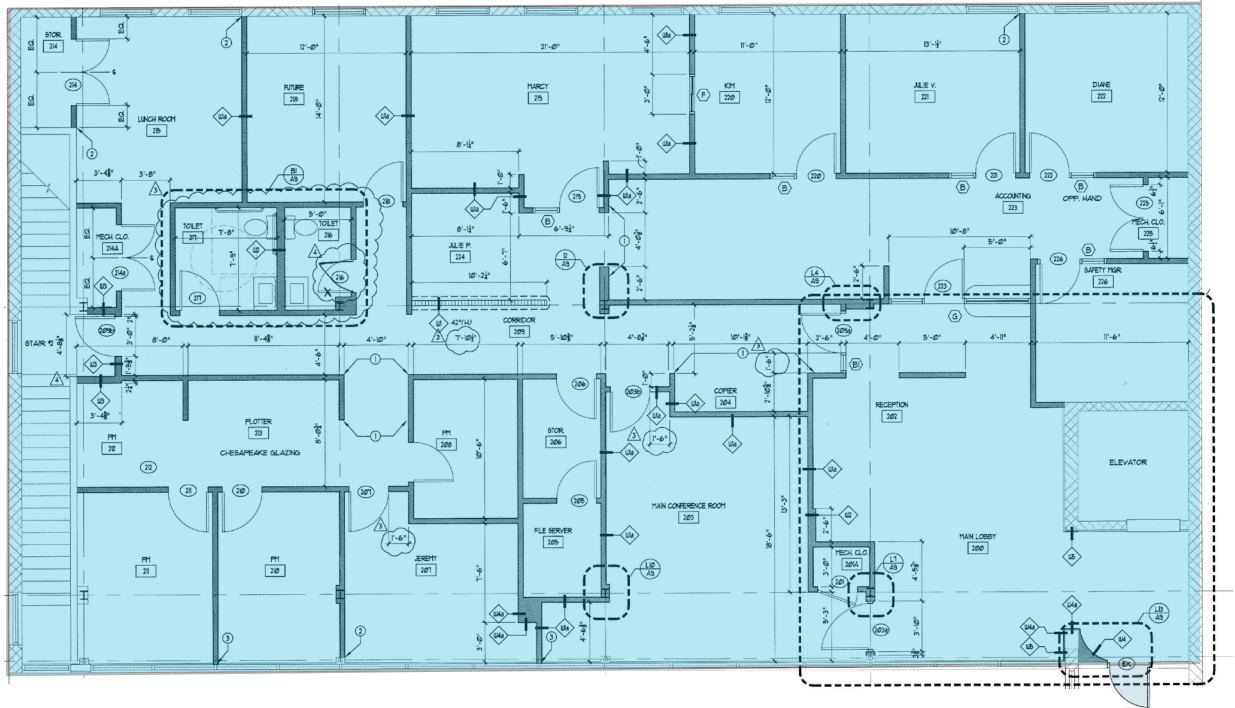
9881 Broken Land Pkwy, #300  
Columbia, MD 21046  
[klnb.com](http://klnb.com)

# 21-25 MAIN STREET

Reisterstown, MD 21136 | Baltimore County

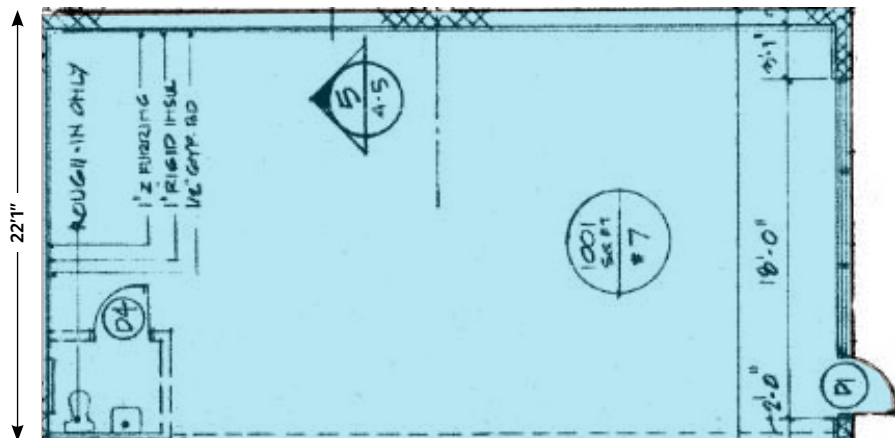
## FLOOR PLAN | 25 MAIN STREET (OFFICE)

2<sup>ND</sup> FLOOR  
4,287 SF  
SUITE 200



## FLOOR PLAN | 21G MAIN STREET (RETAIL)

1<sup>ST</sup> FLOOR  
940 SF



Steele Stanwick  
sstanwick@klnb.com  
443-574-1420

Rachel Klein  
rklein@klnb.com  
443-632-2087

## PHOTOS



# 21-25 MAIN STREET

Reisterstown, MD 21136 | Baltimore County



## MARKET AERIAL



While we have no reason to doubt the accuracy of any of the information supplied, we cannot, and do not, guarantee its accuracy. All information should be independently verified prior to a purchase or lease of the property. We are not responsible for errors, omissions, misuse, or misinterpretation of information contained herein and make no warranty of any kind, express or implied, with respect to the property or any other matters.

Steele Stanwick  
sstanwick@klnb.com  
443-574-1420

Rachel Klein  
rklein@klnb.com  
443-632-2087