

5336 46TH AVENUE

Hyattsville, Maryland 20781
Prince George's County



FOR LEASE

PROPERTY FEATURES

- **Property Size:** 27,113 square feet
- **Available Space:** 6,000 square feet
- **Loading:** Two (2) docks
- **Zoning:** NAC (Neighborhood Activity Center)
- **Ceiling Height:** 22' clear
- **Gated Lot**

NEARBY AMENITIES

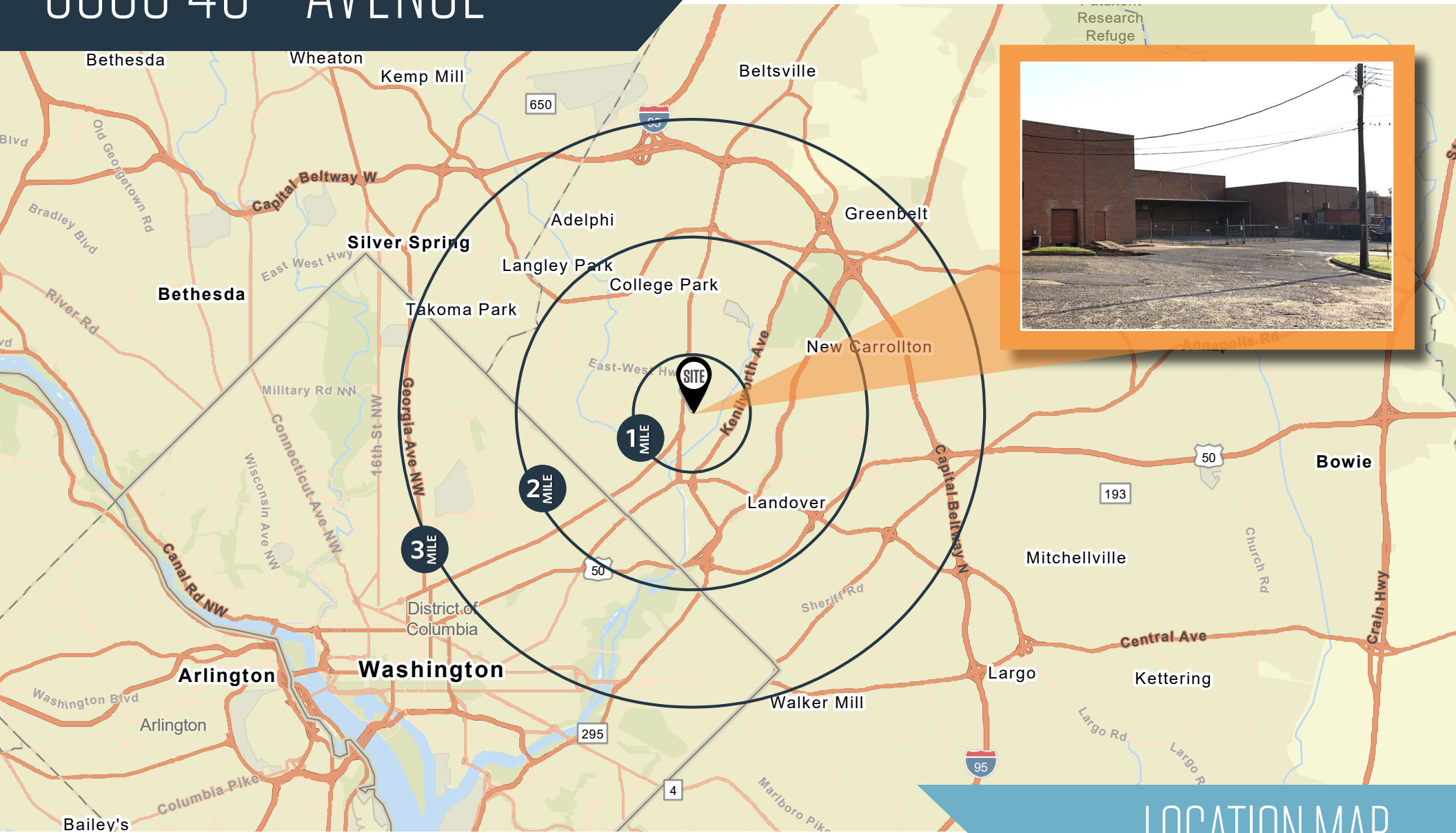


Aaron Carroll
acarroll@klnb.com
202-652-2333

1130 Connecticut Ave, NW, #600
Washington, DC 20036
klnb.com

5336 46TH AVENUE

Hyattsville, Maryland 20781
Prince George's County



LOCATION MAP

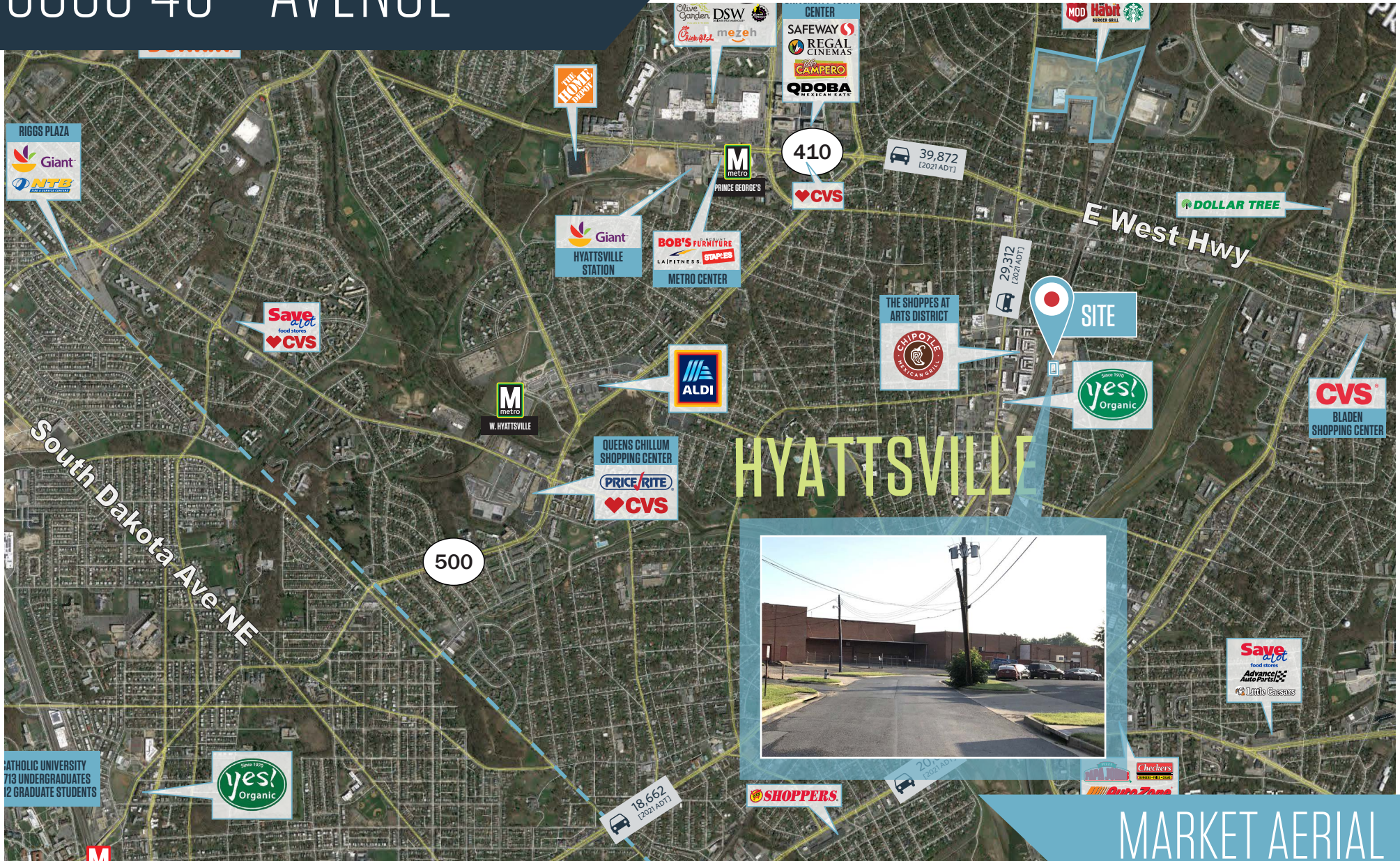
Aaron Carroll
acarroll@klnb.com
202-652-2333

1130 Connecticut Ave, NW, #600
Washington, DC 20036
klnb.com



5336 46TH AVENUE

Hyattsville, Maryland 20781
Prince George's County



Aaron Carroll
acarroll@klnb.com
202-652-2333

1130 Connecticut Ave, NW, #600
Washington, DC 20036
klnb.com



5336 46TH AVENUE

Hyattsville, Maryland 20781
Prince George's County

CLICK TO VIEW PROPERTY WEBSITE

For More Information, Please Contact:

Aaron Carroll

acarroll@klnb.com

202-652-2333

1130 Connecticut Ave, NW
Suite 600
Washington, DC 20036

klnb.com



[instagram.com/klnbcre](https://www.instagram.com/klnbcre)



[linkedin.com/company/klnb](https://www.linkedin.com/company/klnb)



[facebook.com/KLNBCRE](https://www.facebook.com/KLNBCRE)

While we have no reason to doubt the accuracy of any of the information supplied, we cannot, and do not, guarantee its accuracy. All information should be independently verified prior to a purchase or lease of the property. We are not responsible for errors, omissions, misuse, or misinterpretation of information contained herein and make no warranty of any kind, express or implied, with respect to the property or any other matters.

NAIklnb