



FOR LEASE

PROPERTY HIGHLIGHTS

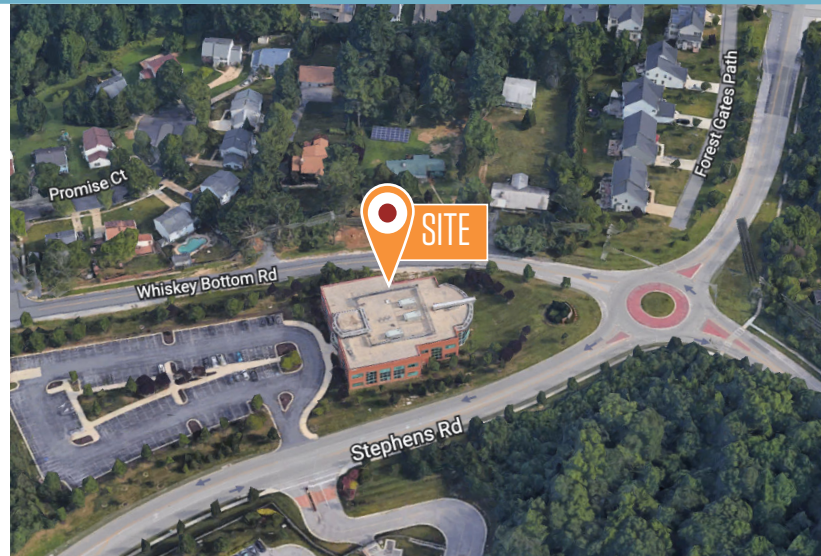
CLASS A OFFICE AVAILABILITY

Building Highlights

- 29,836 SF, two-story office building on 2.8 acres
 - » **Suite 102:** 4,584 RSF
 - » **Suite 106:** 2,073 RSF (existing training room)
 - » **Suite 200:** 15,500 RSF (availabilities shown on next page)
- M-F shower with locker area
- 4 parking spaces per 1,000 SF
- Approximately 14,000 SF floor plates

Location Highlights

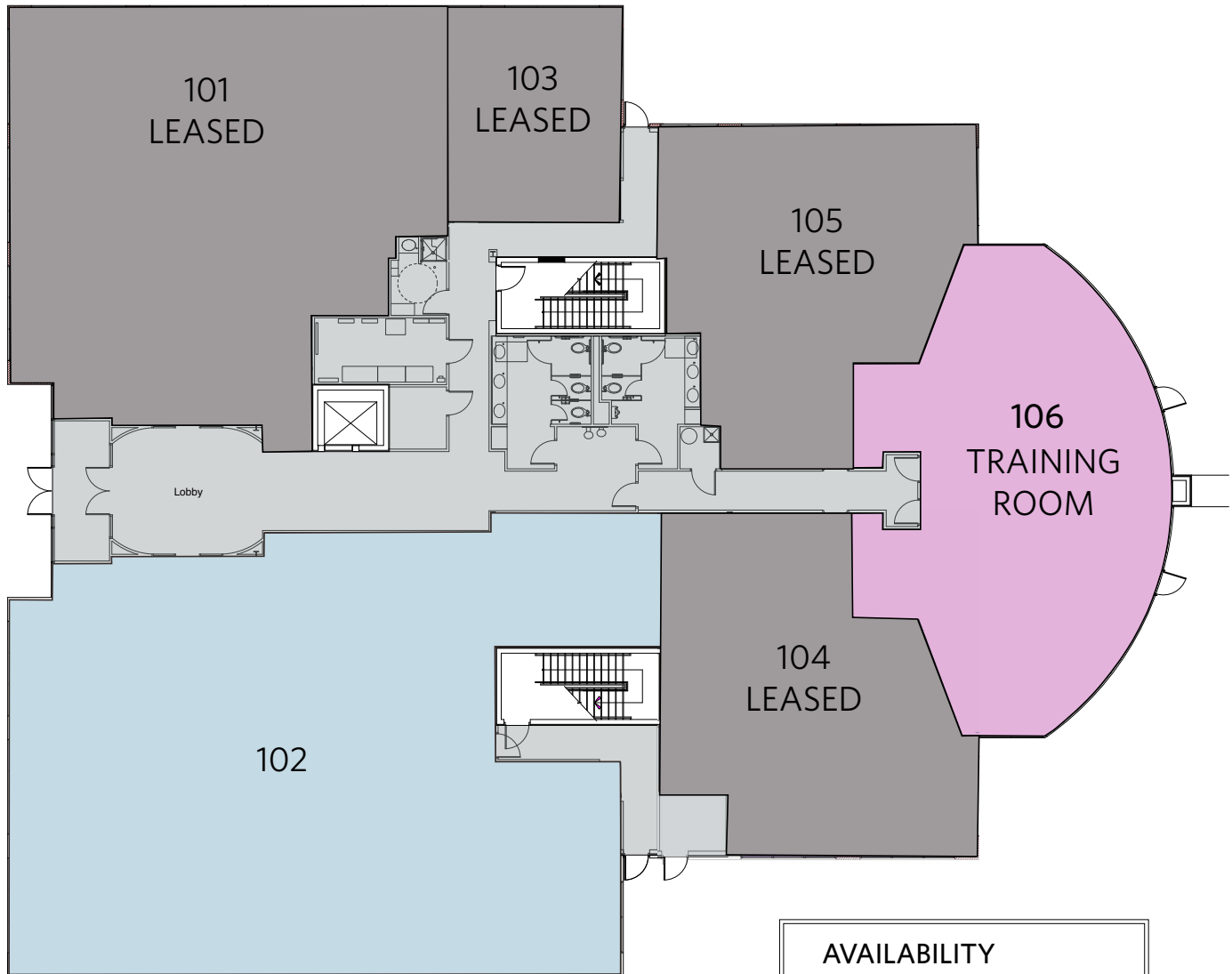
- Strategic Baltimore-Washington Corridor location with “traffic-light-free” access to I-95 and MD Route 216
- Proximity to Ft. Meade, JHU APL, NASA, White Oak Federal Research, and other Agencies and Employment Centers
- Just minutes from shops and restaurants at Historic Savage Mill and Maple Lawn
- Best Workplaces for Commuters: Recognized as one of the Best Workplaces for commuters by the National Center for Transit Research for its commuter and environmentally friendly policies





8920 STEPHENS ROAD

Laurel, MD 20723 | Howard County

1ST FLOOR PLAN



AVAILABILITY

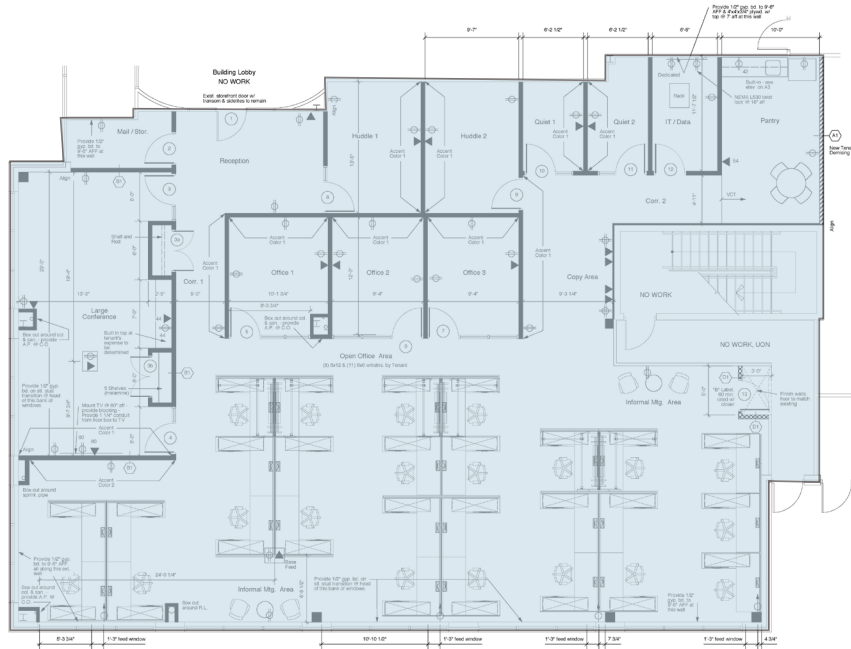
-  **Suite 102**
4,584 rentable sq. ft.
-  **Suite 106**
2,073 rentable sq. ft.

David J. Fritz, CCIM, SIOR
dfritz@klnb.com
443-574-1410

Chuck Breitenother
cbreitenother@klnb.com
443-574-1422

Spence Daw
sdaw@klnb.com
443-574-1429

1ST FLOOR | SUITE 102 | 4,584 RSF



2ND FLOOR PLAN | SUITE 200 | 15,500 RSF TOTAL

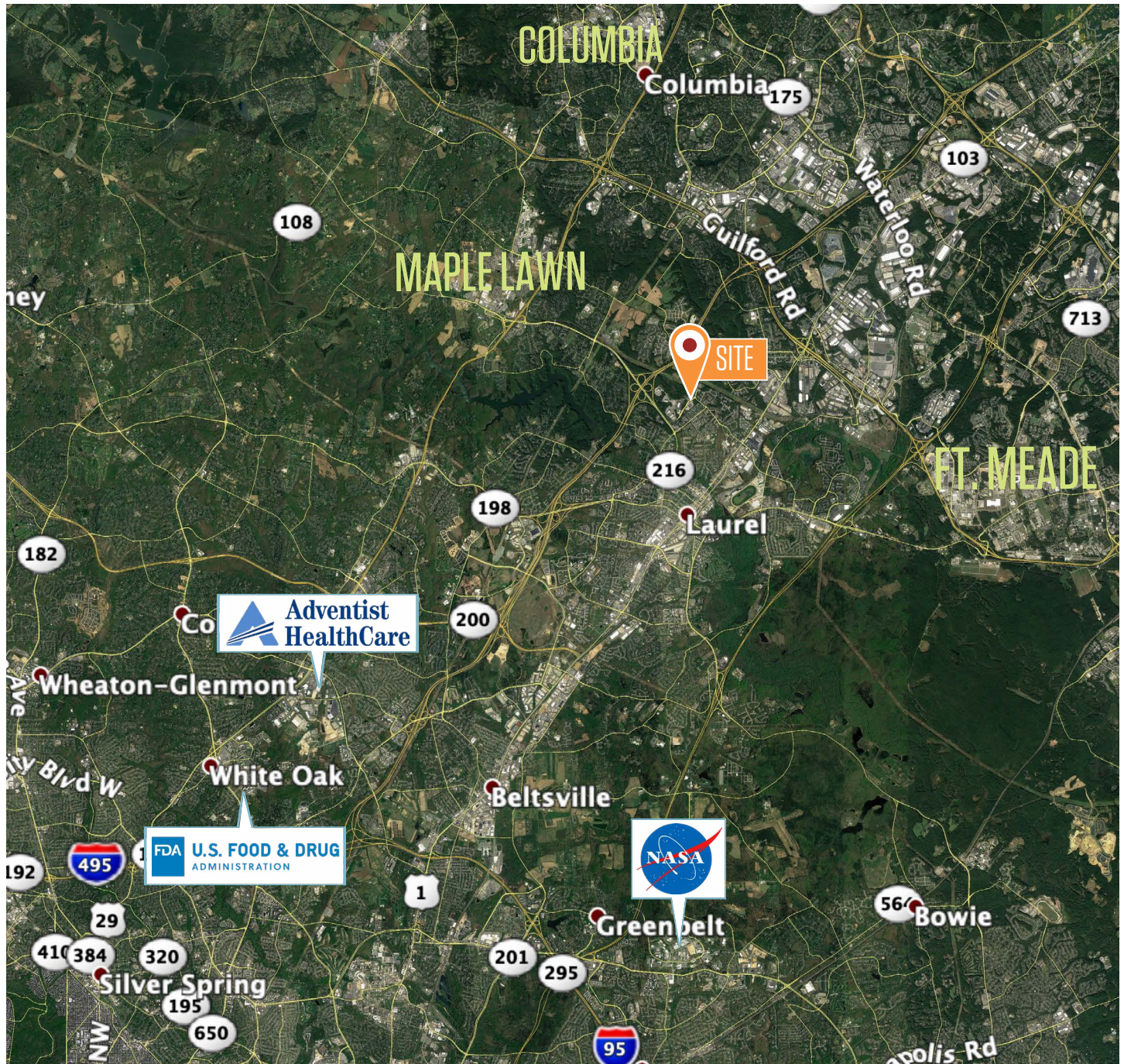


8920 STEPHENS ROAD

Laurel, MD 20723 | Howard County



AERIAL VIEW



While we have no reason to doubt the accuracy of any of the information supplied, we cannot, and do not, guarantee its accuracy. All information should be independently verified prior to a purchase or lease of the property. We are not responsible for errors, omissions, misuse, or misinterpretation of information contained herein and make no warranty of any kind, express or implied, with respect to the property or any other matters.

David J. Fritz, CCIM, SIOR
dfritz@klnb.com
443-574-1410

Chuck Breitenother
cbreitenother@klnb.com
443-574-1422

Spence Daw
sdaw@klnb.com
443-574-1429

9881 Broken Land Pkwy, #300
Columbia, MD 21046
klnb.com