

5005 SIGNAL BELL LANE  
Clarksville, MD 21029 | Howard County

CLICK TO VIEW PROPERTY WEBSITE

For More Information, Please Contact:

**Colin McGonigal**  
cmcgonigal@klnb.com  
443-632-2083

**Abby Glassberg**  
aglassberg@klnb.com  
443-574-1433

100 West Road, Suite 505  
Towson, MD 21204

[klnb.com](http://klnb.com)

 [instagram.com/klnbcre](https://www.instagram.com/klnbcre)  [linkedin.com/company/klnb](https://www.linkedin.com/company/klnb)  [facebook.com/KLNBCRE](https://www.facebook.com/KLNBCRE)

While we have no reason to doubt the accuracy of any of the information supplied, we cannot, and do not, guarantee its accuracy. All information should be independently verified prior to a purchase or lease of the property. We are not responsible for errors, omissions, misuse, or misinterpretation of information contained herein and make no warranty of any kind, express or implied, with respect to the property or any other matters.

**klnbHealthcare**  
Real Estate Services

**klnbHealthcare**  
Real Estate Services

5005 Signal Bell Lane, Clarksville, MD 21029  
Howard County



FOR LEASE

## PROPERTY HIGHLIGHTS:

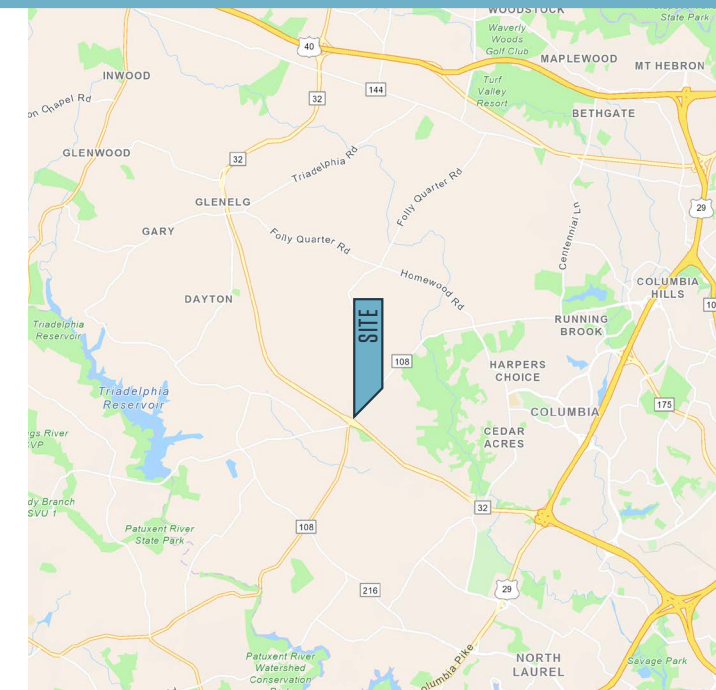
### Suite Highlights

- Available for lease:
  - Second Floor: Suite 205 - 1,010 SF
  - Second Floor: Suite 210 - 715 SF
- Existing medical suites
- Opportunity for tenant signage

### Building Highlights

- Located in the River Hill Village Center
- Recent upgrades and renovations
- Excellent access to Route 32 & Route 108

## JOIN THESE MEDICAL USERS:



**Colin McGonigal**  
cmcgonigal@klnb.com  
443-632-2083

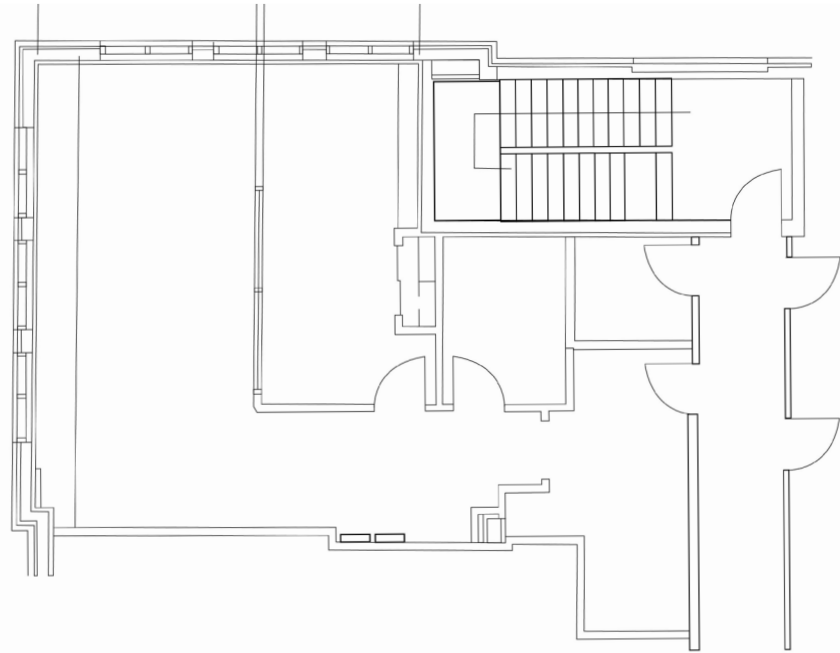
**Abby Glassberg**  
aglassberg@klnb.com  
443-574-1433

100 West Road, Suite 505  
Towson, MD 21204  
[klnb.com](http://klnb.com)

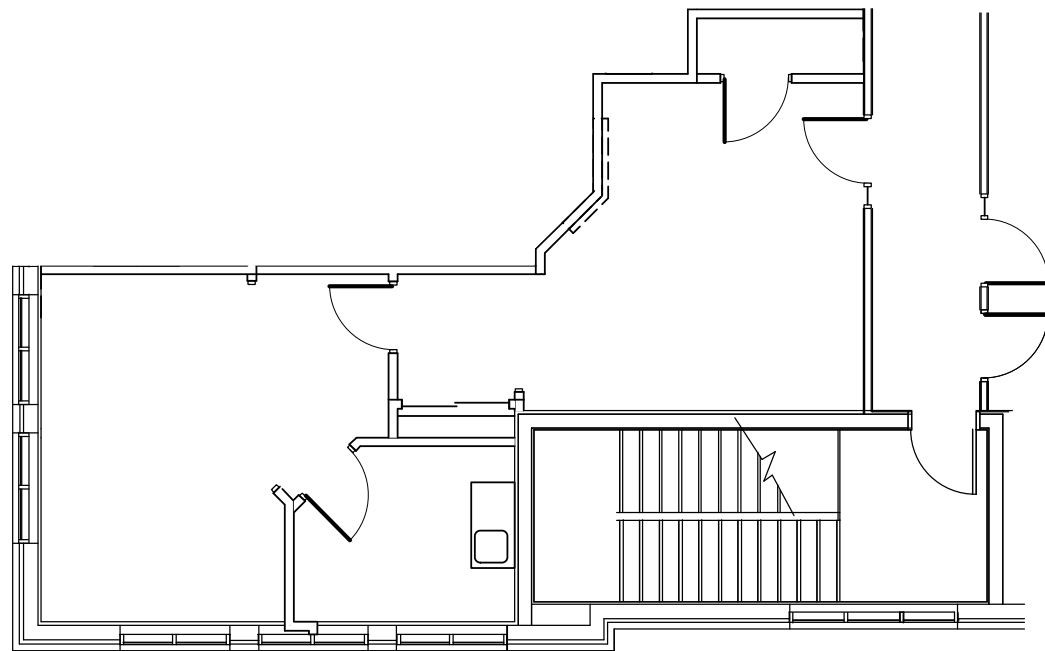
# 5005 SIGNAL BELL LANE

Clarksville, MD 21029 | Howard County

## FLOOR PLAN - SUITE 205



## FLOOR PLAN - SUITE 210



## PHOTOS

