


10830 GILROY ROAD

10830 Gilroy Road, Hunt Valley, MD 21031
Baltimore County



OFFICE/WAREHOUSE AVAILABLE

PROPERTY HIGHLIGHTS:

- Ideal corporate headquarters with warehouse/manufacturing space
- Located in the heart of Hunt Valley Business Community
- Easily accessible to interstates  
- Highly visible; property fronts I-83
- Adjacent to Light Rail stop
- Building: 80,150 SF
 - » 49,750 SF: Warehouse
 - » 30,400 SF: Office
- 146 parking spaces
- Deli with equipment
- Warehouse specifications
 - » 20' 6" clear ceiling height
 - » 35' x 35' & 40' x 40' column spacing
 - » 6 loading docks
 - » 2 drive-ins
 - » Wet sprinkler system
 - » Heavy electric - 3,000 amps, 277/480
- **Base Rent: \$13.25 NNN**
- **Sale Price: \$15,200,000**

Peter Dudley
pdudley@klnb.com
443-632-2064

Joe Nolan
jnolan@klnb.com
443-632-2065

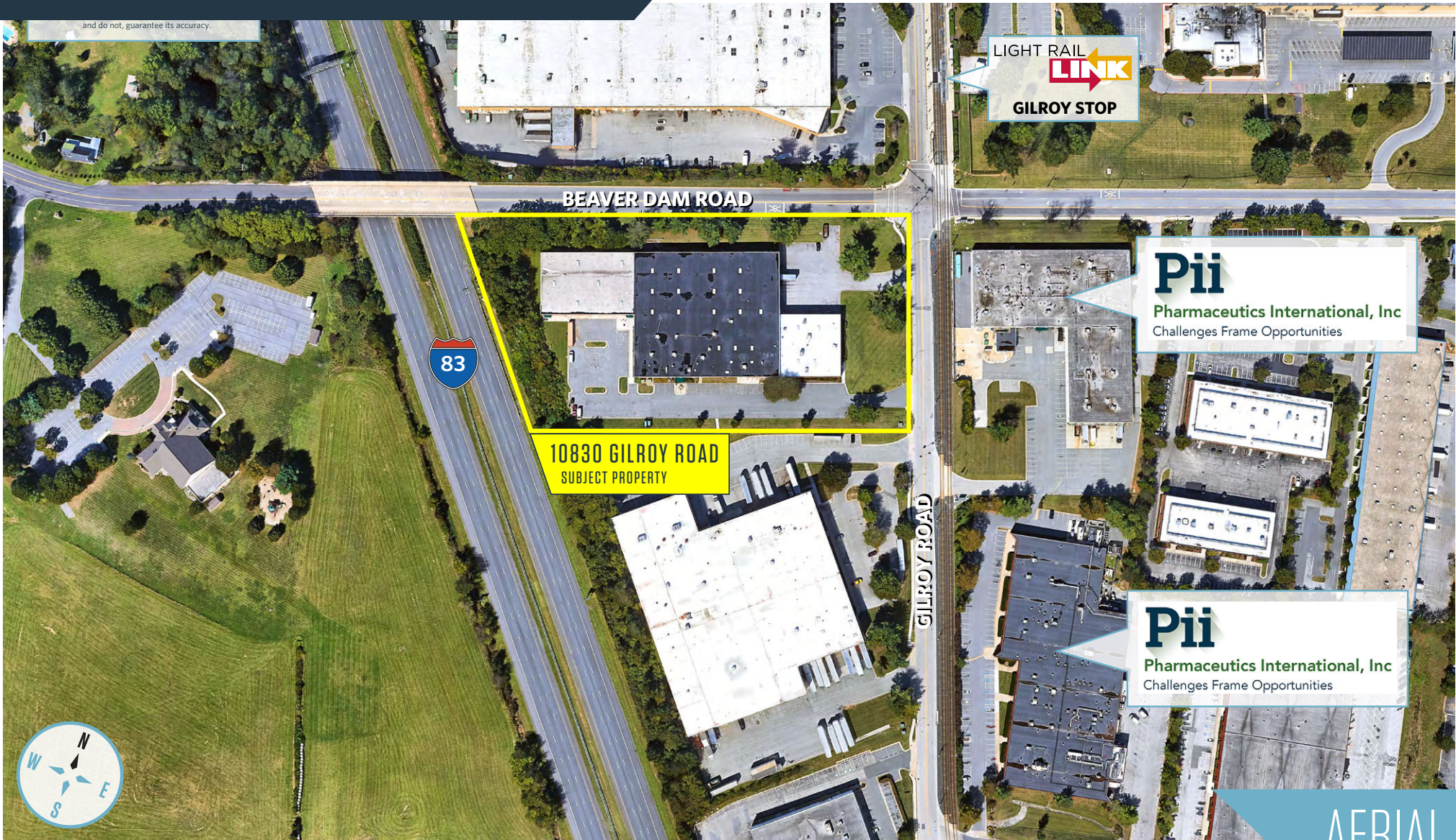
100 West Road, Suite 505
Towson, MD 21204
klnb.com

NAIklnb

10830 GILROY ROAD

10830 Gilroy Road, Hunt Valley, MD 21031
Baltimore County

and do not guarantee its accuracy.



LIGHT RAIL
LINK
GILROY STOP

BEAVER DAM ROAD

83

10830 GILROY ROAD
SUBJECT PROPERTY

GILROY ROAD

Pii
Pharmaceuticals International, Inc
Challenges Frame Opportunities

Pii
Pharmaceuticals International, Inc
Challenges Frame Opportunities

AERIAL

Peter Dudley
pdudley@klnb.com
443-632-2064

Joe Nolan
jnolan@klnb.com
443-632-2065

100 West Road, Suite 505
Towson, MD 21204
klnb.com



10830 GILROY ROAD

10830 Gilroy Road, Hunt Valley, MD 21031
Baltimore County



WAREHOUSE
49,750 SF

The floor plan shows a large rectangular building. The top portion is a large, mostly empty space labeled 'WAREHOUSE 49,750 SF'. The bottom portion is a detailed office layout labeled 'OFFICE 30,400 SF'. The office area includes numerous small offices, several conference rooms, a kitchen, a break room, a server room, and restrooms. A central area contains a large open-plan office space with desks and chairs. The warehouse area is outlined with a blue border, and the office area is outlined with an orange border.

OFFICE
30,400 SF

FLOOR PLAN

Peter Dudley
pdudley@klnb.com
443-632-2064

Joe Nolan
jnolan@klnb.com
443-632-2065

100 West Road, Suite 505
Towson, MD 21204
klnb.com

NAklnb

10830 GILROY ROAD

10830 Gilroy Road, Hunt Valley, MD 21031
Baltimore County



PHOTOS

Peter Dudley
pdudley@klnb.com
443-632-2064

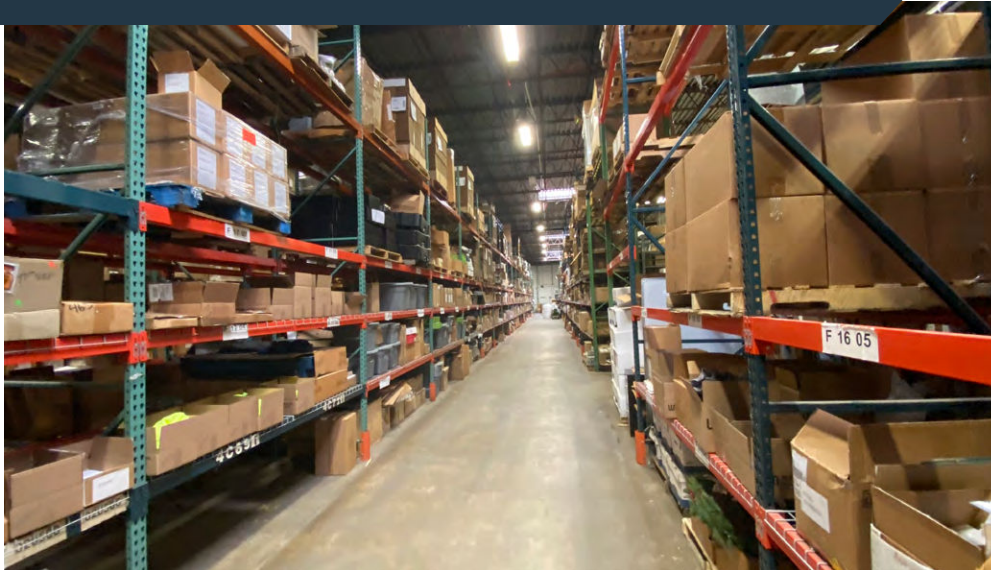
Joe Nolan
jnolan@klnb.com
443-632-2065

100 West Road, Suite 505
Towson, MD 21204
klnb.com

NAIklnb

10830 GILROY ROAD

10830 Gilroy Road, Hunt Valley, MD 21031
Baltimore County



PHOTOS

Peter Dudley
pdudley@klnb.com
443-632-2064

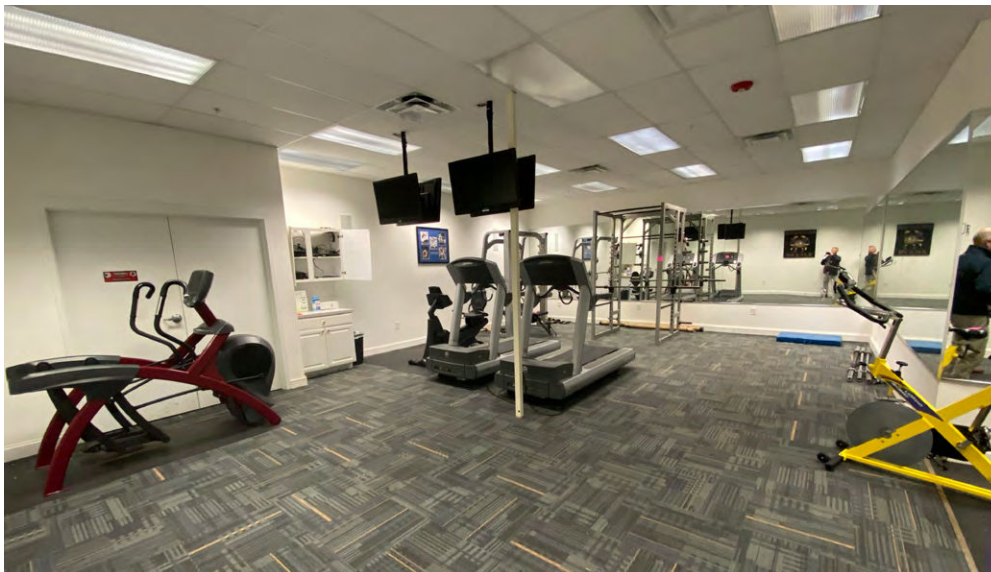
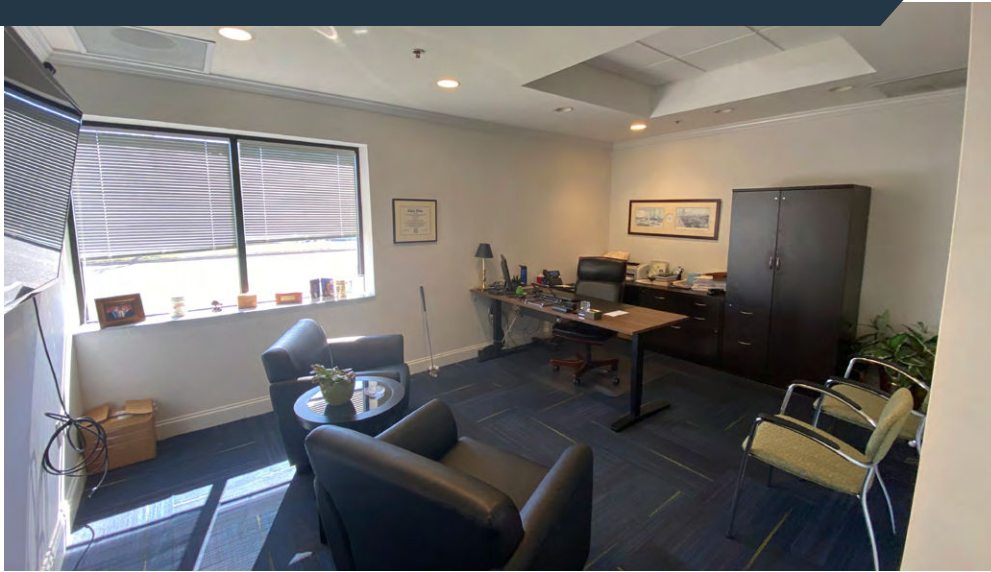
Joe Nolan
jnolan@klnb.com
443-632-2065

100 West Road, Suite 505
Towson, MD 21204
klnb.com

NAIklnb

10830 GILROY ROAD

10830 Gilroy Road, Hunt Valley, MD 21031
Baltimore County



PHOTOS

Peter Dudley
pdudley@klnb.com
443-632-2064

Joe Nolan
jnolan@klnb.com
443-632-2065

100 West Road, Suite 505
Towson, MD 21204
klnb.com

NAIklnb

10830 GILROY ROAD

10830 Gilroy Road, Hunt Valley, MD 21031
Baltimore County



PHOTOS

Peter Dudley
pdudley@klnb.com
443-632-2064

Joe Nolan
jnolan@klnb.com
443-632-2065

100 West Road, Suite 505
Towson, MD 21204
klnb.com

NAIklnb

10830 GILROY ROAD

10830 Gilroy Road, Hunt Valley, MD 21031
Baltimore County

CLICK TO VIEW PROPERTY WEBSITE

For More Information, Please Contact:

Peter Dudley

pdudley@klnb.com

443-632-2064

Joe Nolan

jnolan@klnb.com

443-632-2065

100 West Road, Suite 505
Baltimore, MD 21204

klnb.com

 facebook.com/KLNB

 [@KLNBLLC](https://twitter.com/KLNBLLC)

 linkedin.com/company/klnb

 instagram.com/klnbllc

While we have no reason to doubt the accuracy of any of the information supplied, we cannot, and do not, guarantee its accuracy. All information should be independently verified prior to a purchase or lease of the property. We are not responsible for errors, omissions, misuse, or misinterpretation of information contained herein and make no warranty of any kind, express or implied, with respect to the property or any other matters.

NAIklnb