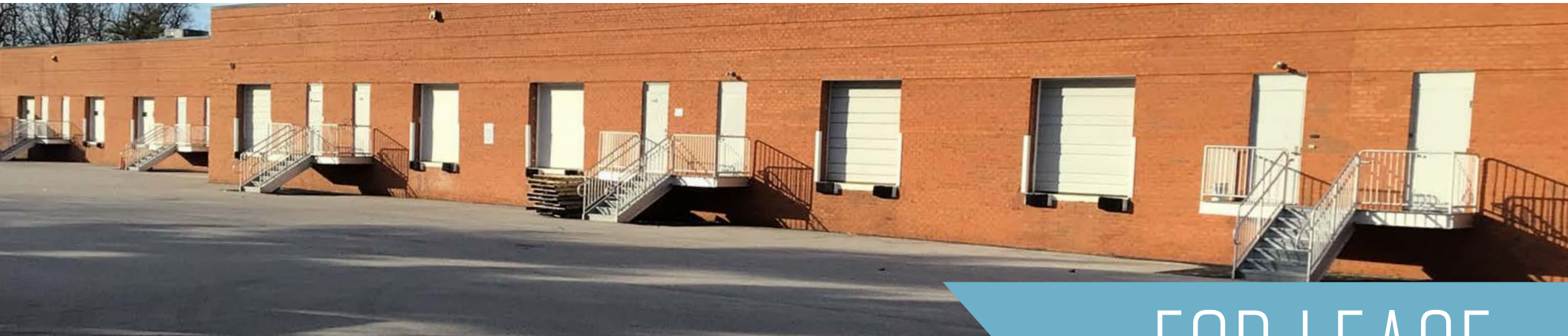


# FLEX SPACE AVAILABLE

8989 Herrmann Drive, Columbia, MD 21045  
Howard County



## FOR LEASE

### PROPERTY INFORMATION

- ▶ 3,748 - 8,444 ± SF available (2 docks)
- ▶ 10,474 ± SF end-cap available; 60% office; 40% warehouse (2 docks)
- 5 minutes to I-95
- 16 miles to the DC Beltway (I-495)
- 10 miles to the Baltimore Beltway (I-695)
- Zoning: New Town (NT)

- Ceiling Height: 13'6"
- Column Spacing: 28' x 40'
- Truck Court: 66'
- Sprinkler: Wet sprinkler
- Loading: Two (2) 8' x 8' dock high doors
- Xfinity cable
- Snowden Center to Dobbin Road Corridor is a vibrant amenity base

OWNED & MANAGED BY:



David J. Fritz, CCIM, SIOR  
dfritz@klnb.com  
443-574-1410

Spence Daw  
sdaw@klnb.com  
443-574-1429

Steele Stanwick  
sstanwick@klnb.com  
443-574-1420

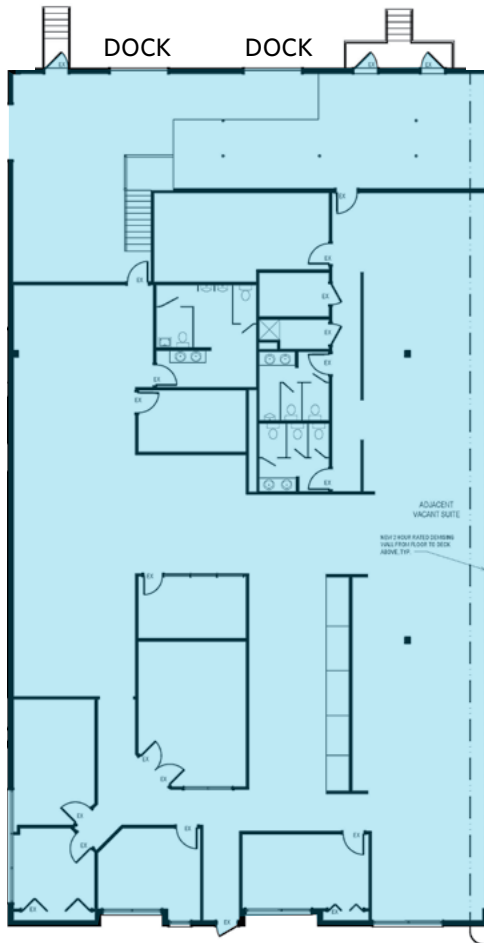
9881 Broken Land Parkway, #300  
Columbia, MD 21046  
klnb.com



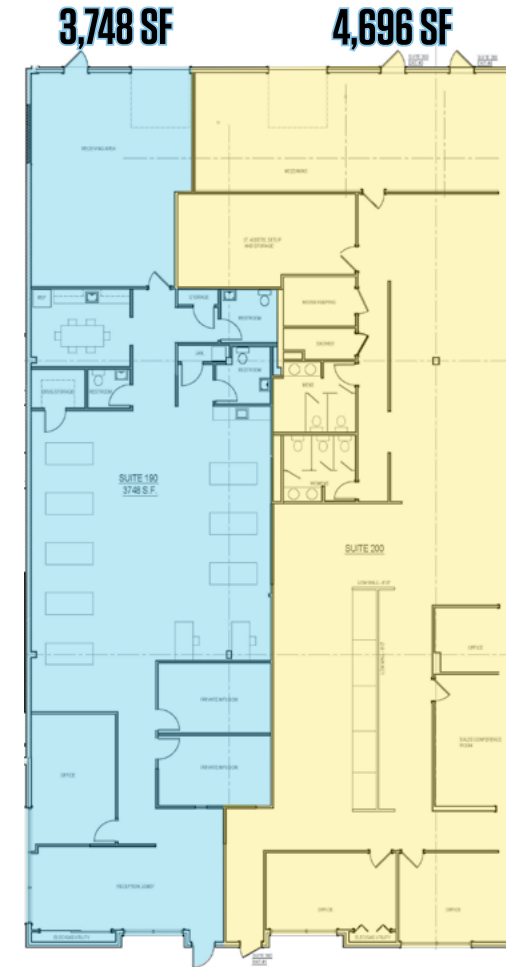
# FLEX SPACE AVAILABLE

8989 Herrmann Drive, Columbia, MD 21045  
Howard County

8,444 +/- SF  
AVAILABLE



DEMISING  
PLAN



8,444 +/- SF FLOOR PLANS

David J. Fritz, CCIM, SIOR  
dfritz@klnb.com  
443-574-1410

Spence Daw  
sdaw@klnb.com  
443-574-1429

Steele Stanwick  
sstanwick@klnb.com  
443-574-1420

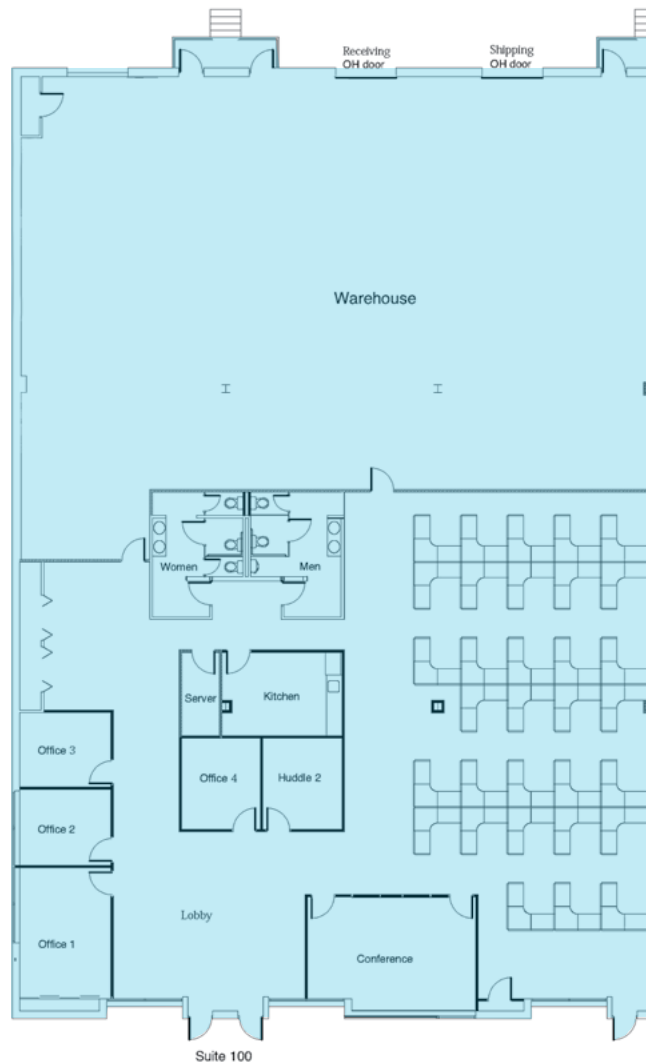
9881 Broken Land Parkway, #300  
Columbia, MD 21046  
klnb.com



# FLEX SPACE AVAILABLE

8989 Herrmann Drive, Columbia, MD 21045  
Howard County

**10,474 +/- SF**  
END CAP AVAILABLE



10,474 +/- SF FLOOR PLAN

**David J. Fritz, CCIM, SIOR**  
dfritz@klnb.com  
443-574-1410

**Spence Daw**  
sdaw@klnb.com  
443-574-1429

**Steele Stanwick**  
sstanwick@klnb.com  
443-574-1420

9881 Broken Land Parkway, #300  
Columbia, MD 21046  
[klnb.com](http://klnb.com)





# FLEX SPACE AVAILABLE

8989 Herrmann Drive, Columbia, MD 21045  
Howard County



OWNED & MANAGED BY:



David J. Fritz, CCIM, SIOR  
dfritz@klnb.com  
443-574-1410

Spence Daw  
sdaw@klnb.com  
443-574-1429

Steele Stanwick  
sstanwick@klnb.com  
443-574-1420

9881 Broken Land Parkway, #300  
Columbia, MD 21046  
klnb.com



AERIAL VIEW



# FLEX SPACE AVAILABLE

8989 Herrmann Drive, Columbia, MD 21045  
Howard County



**David J. Fritz, CCIM, SIOR**  
dfritz@klnb.com  
443-574-1410

**Spence Daw**  
sdaw@klnb.com  
443-574-1429

**Steele Stanwick**  
sstanwick@klnb.com  
443-574-1420

9881 Broken Land Parkway, #300  
Columbia, MD 21046  
[klnb.com](http://klnb.com)





# FLEX SPACE AVAILABLE

8989 Herrmann Drive, Columbia, MD 21045  
Howard County



MARKET AERIAL

David J. Fritz, CCIM, SIOR  
dfritz@klnb.com  
443-574-1410

Spence Daw  
sdaw@klnb.com  
443-574-1429

Steele Stanwick  
sstanwick@klnb.com  
443-574-1420

9881 Broken Land Parkway, #300  
Columbia, MD 21046  
klnb.com





# FLEX SPACE AVAILABLE

8989 Herrmann Drive, Columbia, MD 21045  
Howard County

CLICK TO VIEW PROPERTY WEBSITE

For More Information, Please Contact:

**David J. Fritz, CCIM, SIOR**  
dfritz@klnb.com  
443-574-1410

**Spence Daw**  
sdaw@klnb.com  
443-574-1429

**Steele Stanwick**  
sstanwick@klnb.com  
443-574-1420

9881 Broken Land Parkway, Suite 300  
Columbia, MD 21046

[klnb.com](http://klnb.com)



[instagram.com/klnbcre](https://www.instagram.com/klnbcre)



[linkedin.com/company/klnb](https://www.linkedin.com/company/klnb)



[facebook.com/KLNBCRE](https://www.facebook.com/KLNBCRE)

While we have no reason to doubt the accuracy of any of the information supplied, we cannot, and do not, guarantee its accuracy. All information should be independently verified prior to a purchase or lease of the property. We are not responsible for errors, omissions, misuse, or misinterpretation of information contained herein and make no warranty of any kind, express or implied, with respect to the property or any other matters.

**NAI** klnb