

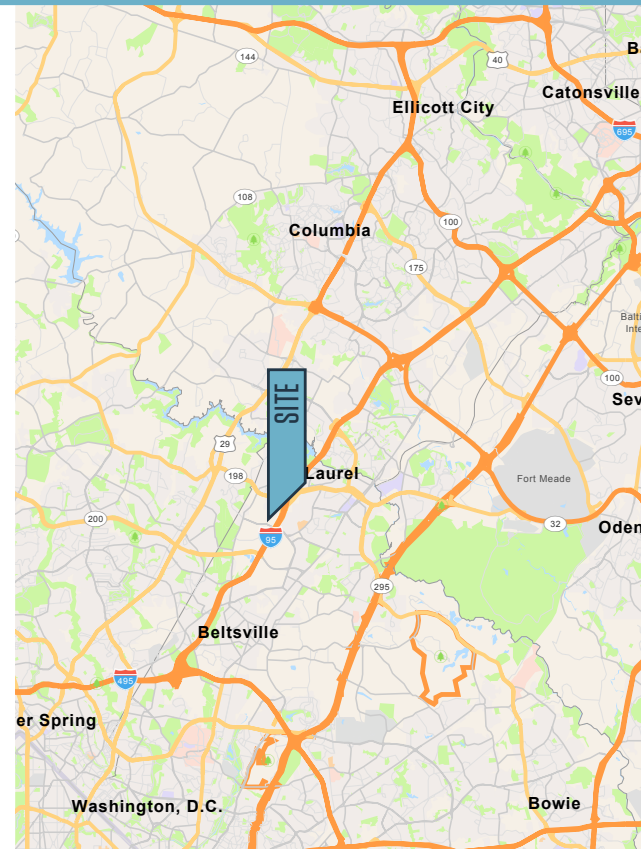
OFFICE FOR LEASE

AVAILABLE SUITES:

- **Suite 101:** 2,715 square feet
- **Suite 102:** 3,210 square feet
- **Suite 103:** 2,613 square feet
- **Suite 106:** 2,229 square feet
- **Suite 201:** 1,532 square feet
- **Suite 203:** 1,470 square feet
- **Suites 101, 102, 103:** Can be combined up to 8,538 square feet

PROPERTY HIGHLIGHTS:

- Well maintained, two-story office building
- **Rental Rate:**
 - » **Suite 101 & 106:** \$20.00/SF + utilities & cleaning
 - » **Suite 102 & 103:** \$18.00/SF + utilities & cleaning
 - » **Suite 201 & 203:** \$19.95/SF - Full Service
- **Parking:** Ample free surface parking
- **Access:** Two minutes from I-95; easy access to Route 198 with access to Routes 129 & 195

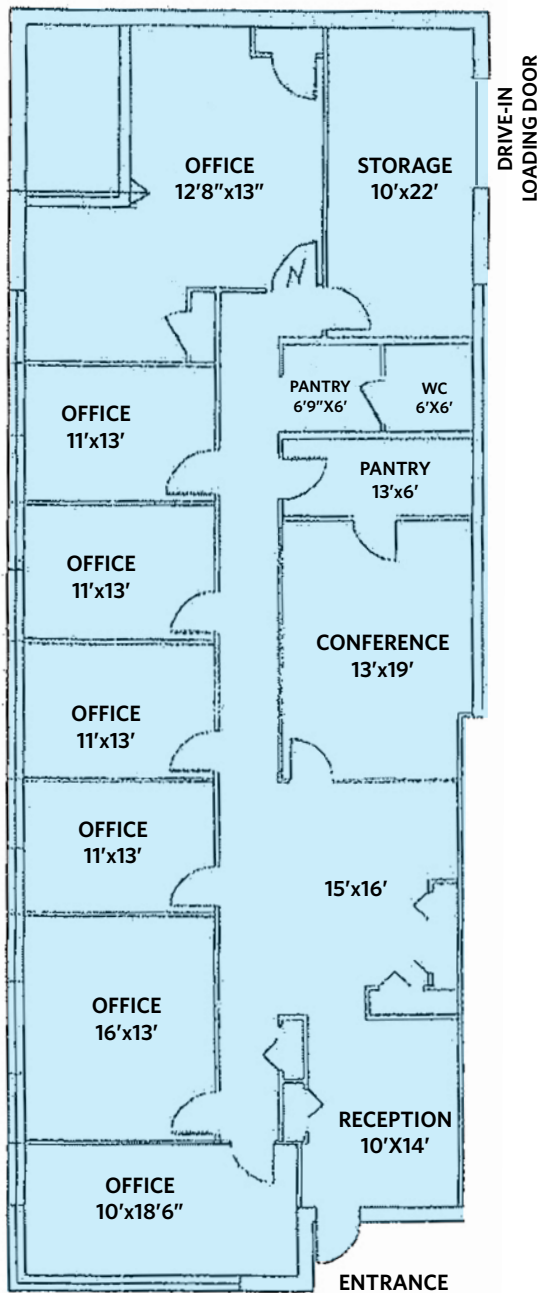


14900 SWEITZER LANE

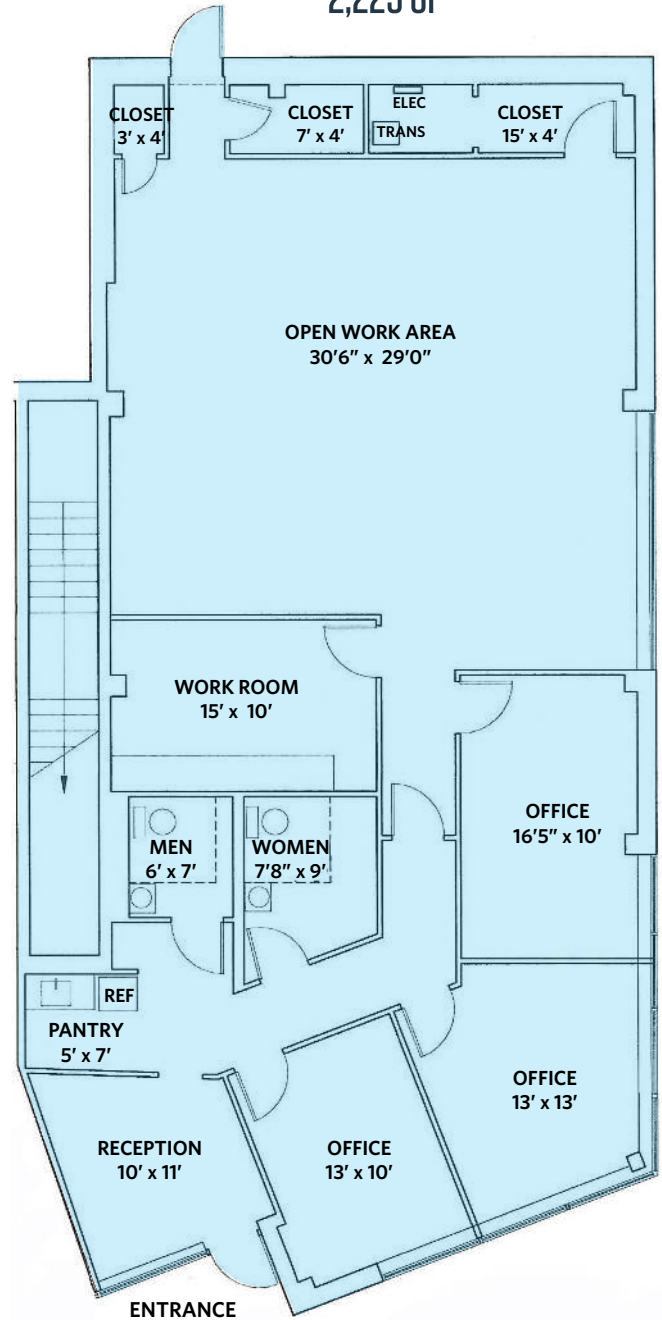
Laurel, MD 20707 | Prince George's County

FIRST FLOOR PLANS

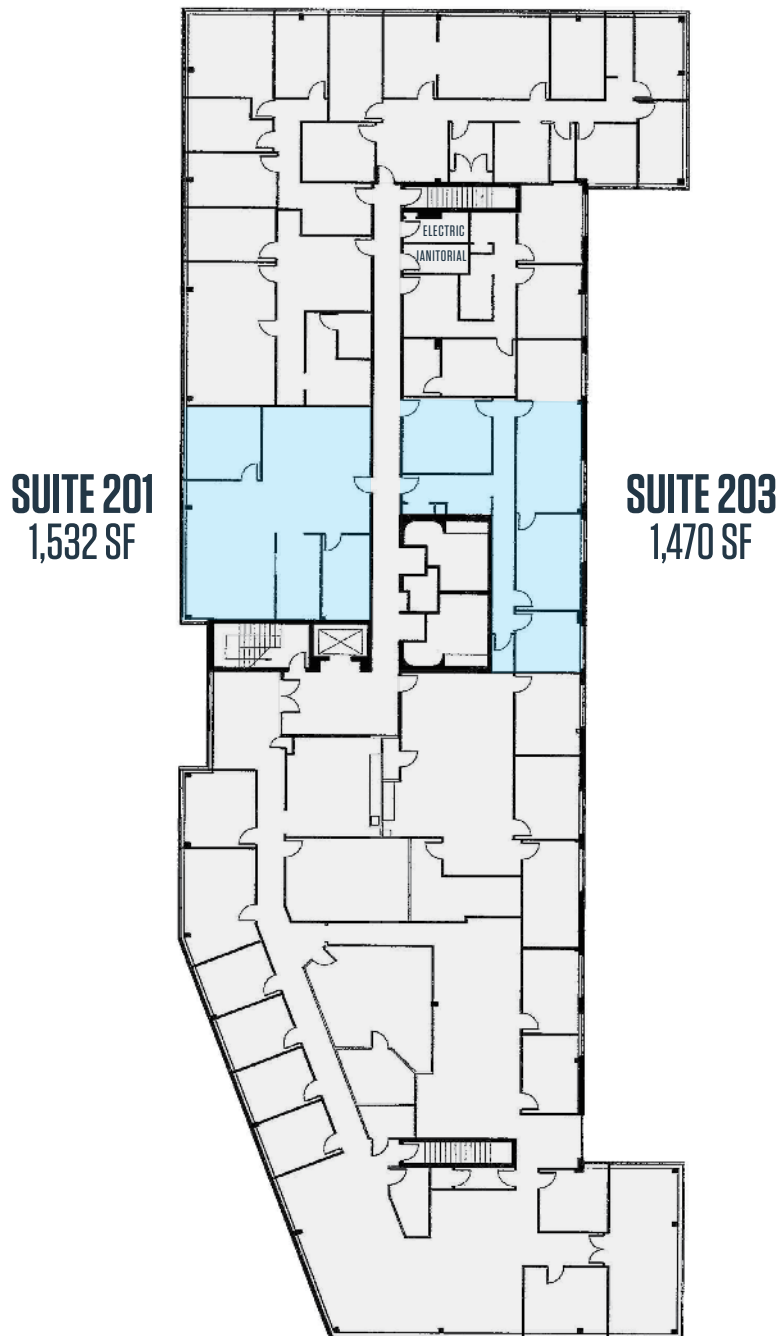
SUITE 101
2,715 SF



SUITE 106
2,229 SF



SECOND FLOOR PLANS

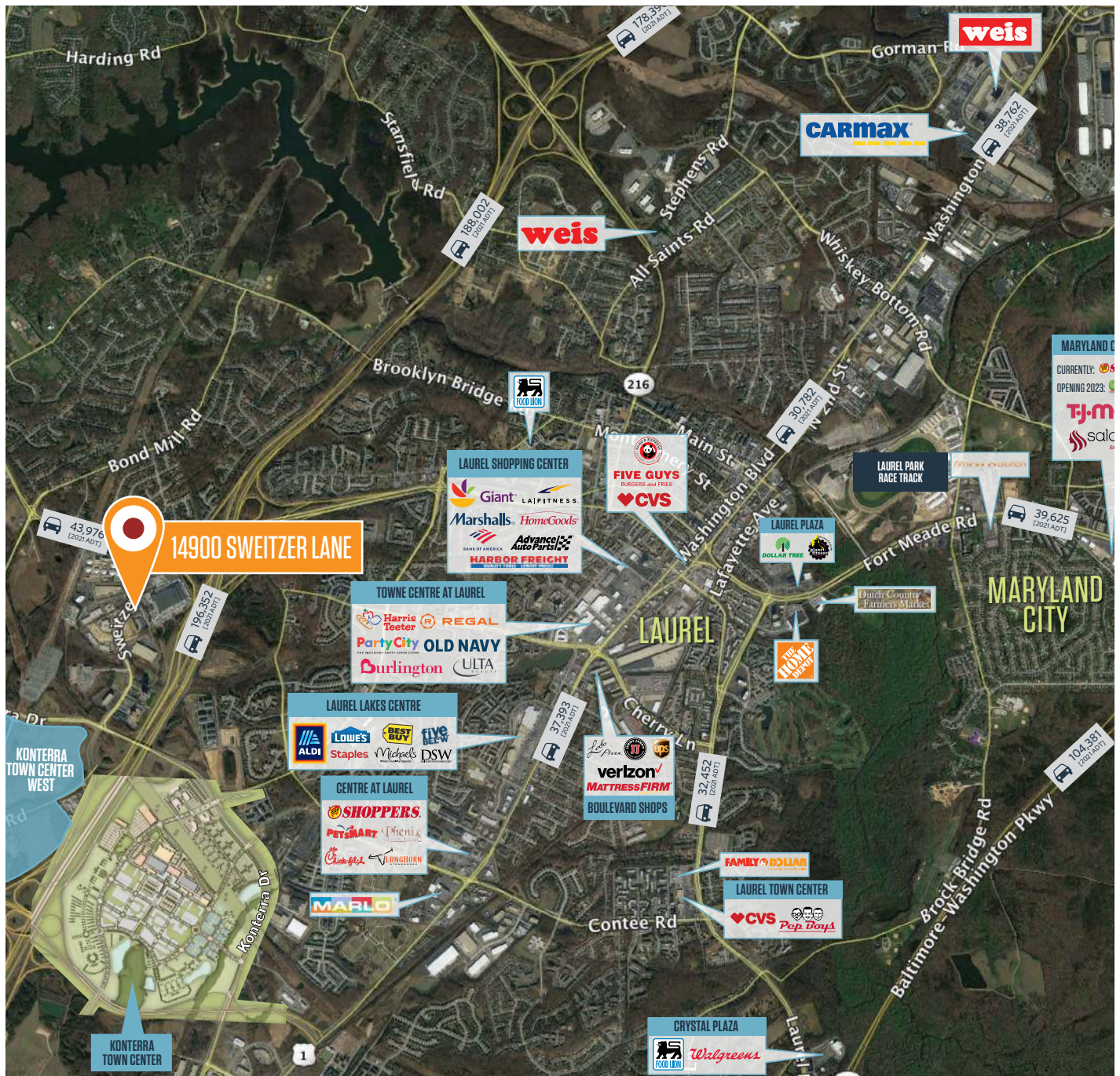


14900 SWEITZER LANE

Laurel, MD 20707 | Prince George's County



MARKET AERIAL



While we have no reason to doubt the accuracy of any of the information supplied, we cannot, and do not, guarantee its accuracy. All information should be independently verified prior to a purchase or lease of the property. We are not responsible for errors, omissions, misuse, or misinterpretation of information contained herein and make no warranty of any kind, express or implied, with respect to the property or any other matters.

Chuck Breitenother
 cbreitenother@klnb.com
 443-574-1422

Abby Glassberg
 aglassberg@klnb.com
 443-574-1433

9881 Broken Land Parkway, Suite 300
 Columbia, MD 21046
klnb.com