



AVAILABILITY

- Term: Through 12/31/2024
 - Rate: \$20.00 PSF, Plug & Play
 - Suite 200 & 230: 21,721 SF
 - Suite 305: 4,178 SF
 - Suite 430: 2,545 SF
- Space Features:
 - Covered deck parking - free
 - 1 loading dock
 - Beautifully landscaped grounds
 - Convenient I-270 location

BUILDING AMENITIES

- Type: Class A | 3 Star Office
- RBA: 116,000 SF
- Stories: 4
- Elevators: 3
- Parking: Surface - 150 | Covered - 250
3.50 / 1,000 SF

SCOTT MENDELSON

smendelson@klnb.com | 703-334-5611

RASHIDA AKHTER

rakhter@klnb.com | 301-222-0019

MARC BALAMACI

mbalamaci@klnb.com | 703-334-5603

MARKET

9420 KEY WEST AVENUE

ROCKVILLE, MARYLAND 20850



SCOTT MENDELSON

smendelson@klnb.com | 703-334-5611

RASHIDA AKHTER

rakhter@klnb.com | 301-222-0019

MARC BALAMACI

mbalamaci@klnb.com | 703-334-5603



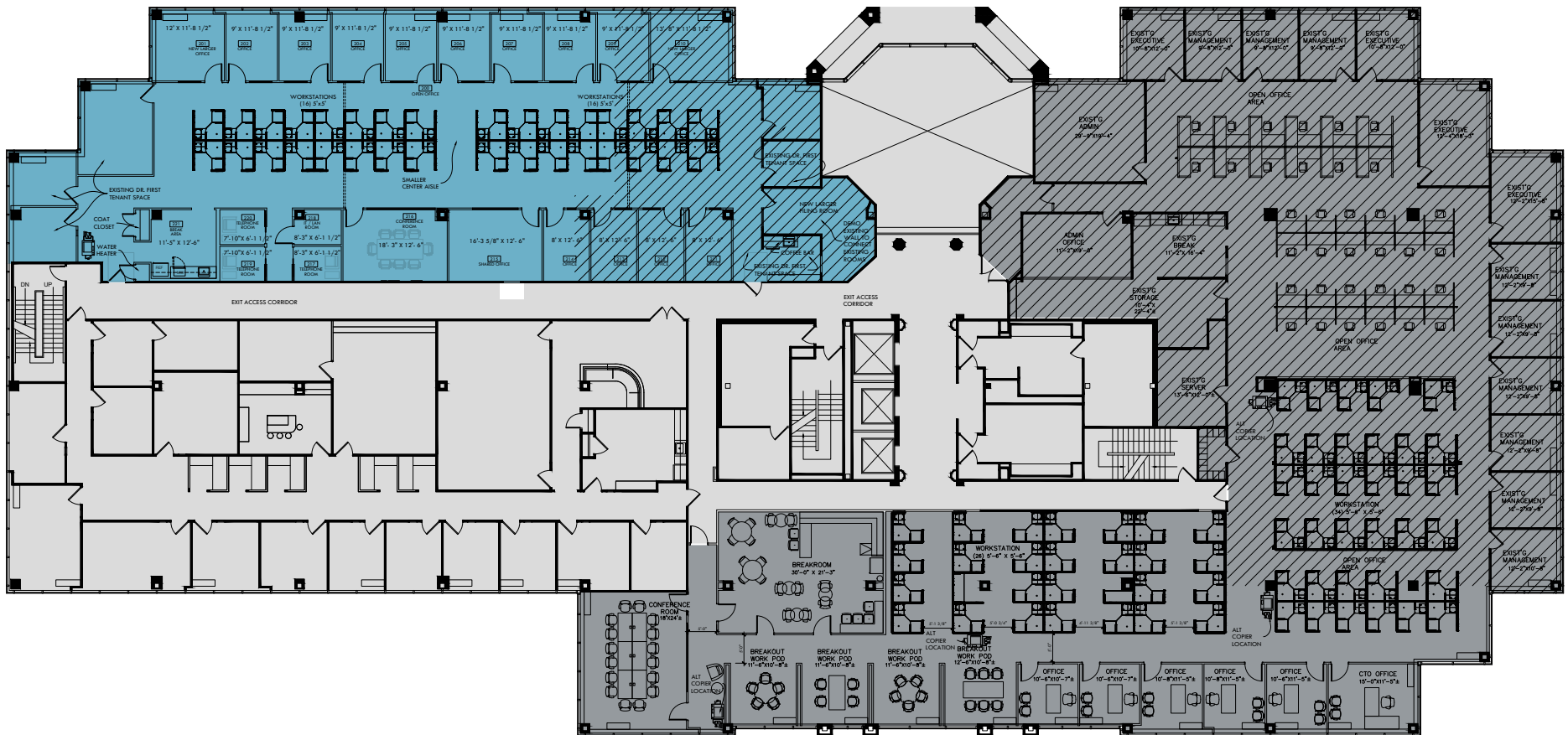
FLOOR PLAN

9420 KEY WEST AVENUE

ROCKVILLE, MARYLAND 20850

SUITE 200

SUITE 230



 AREA OF PLAN NOT SURVEYED

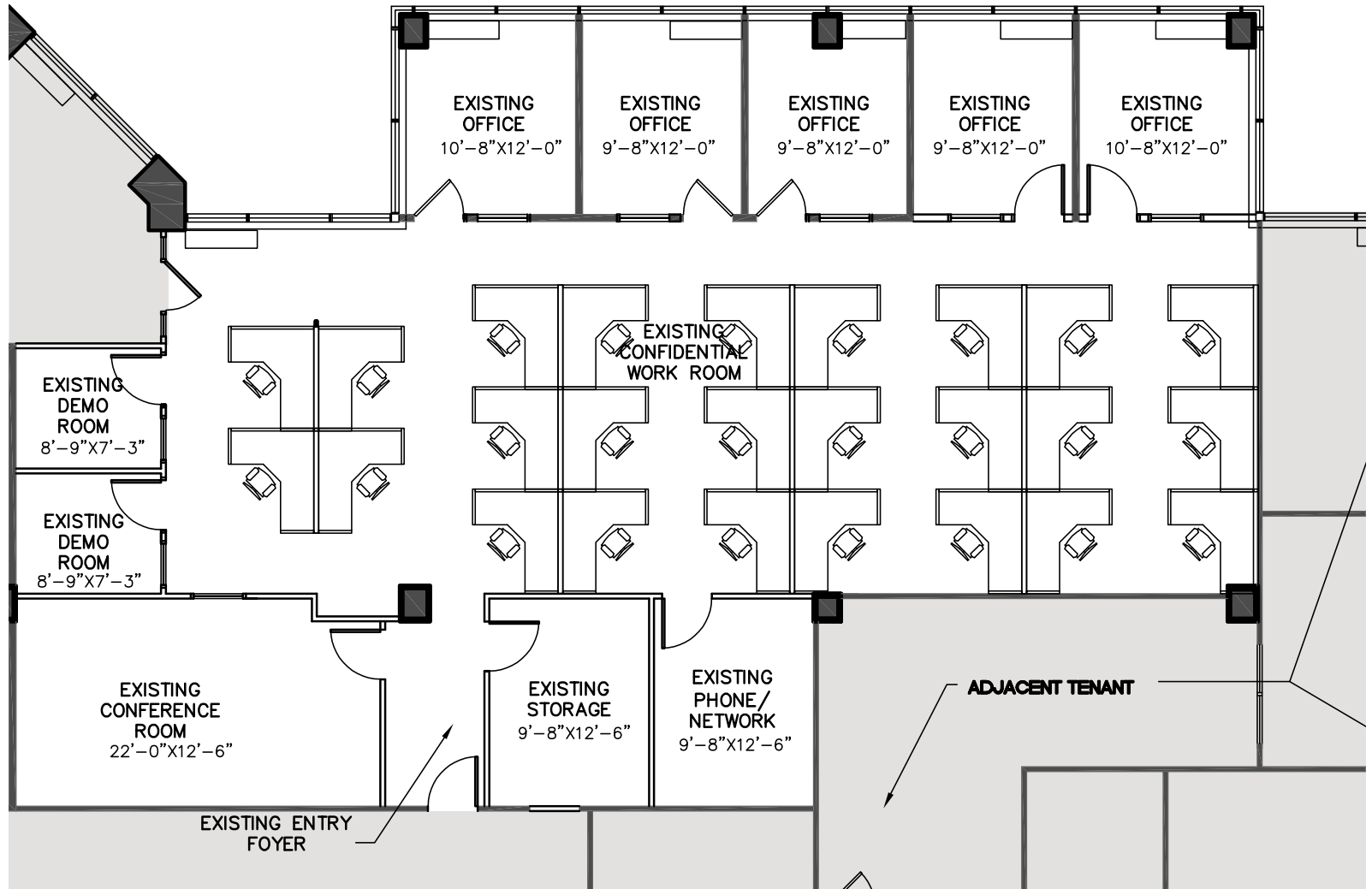
SCOTT MENDELSON
smendelson@klnb.com | 703-334-5611

RASHIDA AKHTER
rakhter@klnb.com | 301-222-0019

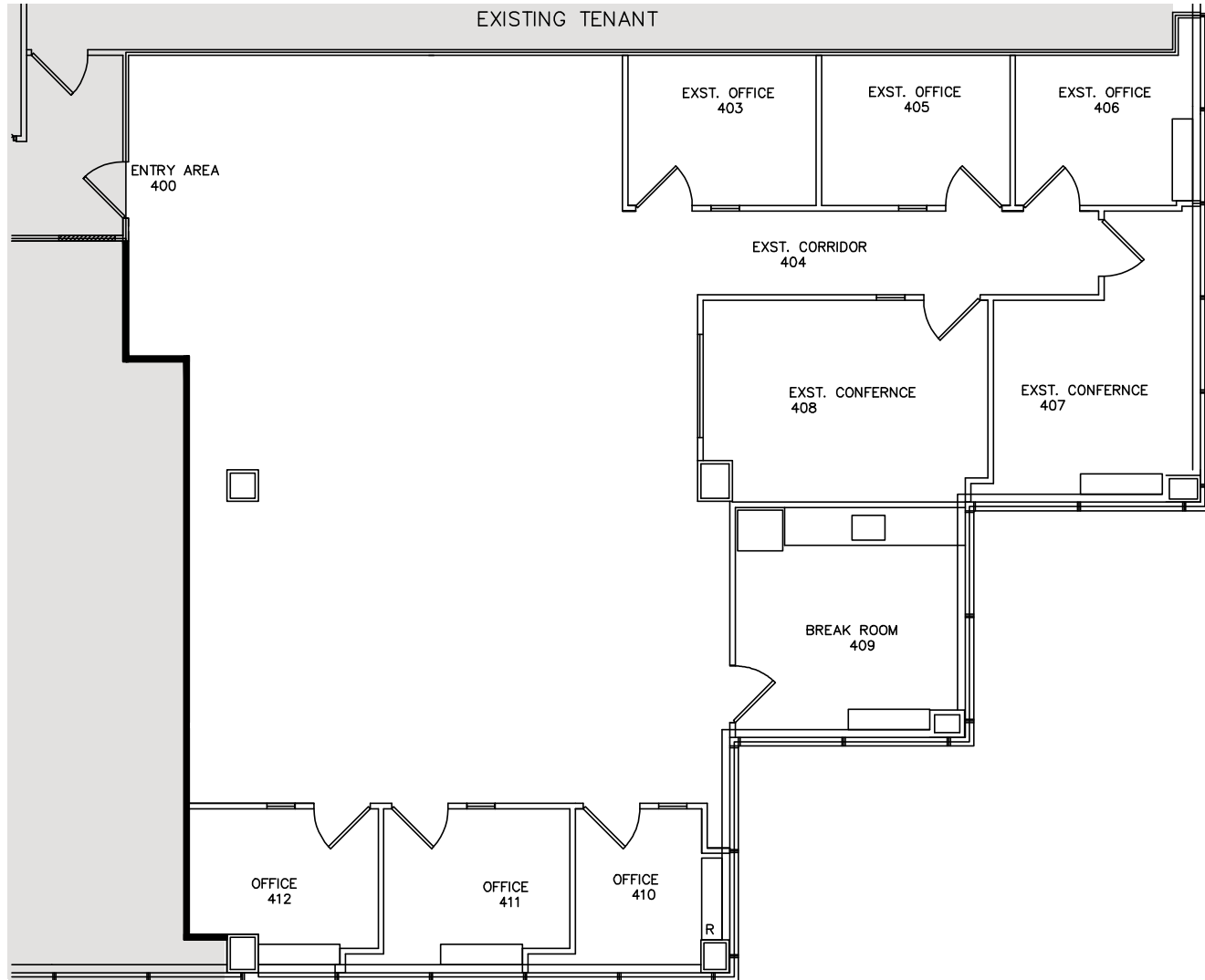
MARC BALAMACI
mbalamaci@klnb.com | 703-334-5603



SUITE 305



SUITE 430





9420 KEY WEST AVENUE

ROCKVILLE, MARYLAND 20850

FOR MORE INFORMATION, PLEASE CONTACT:

SCOTT MENDELSON

smendelson@klnb.com
703-334-5611

RASHIDA AKHTER

rakhter@klnb.com
301-222-0019

MARC BALAMACI

mbalamaci@klnb.com
703-334-5603

2273 Research Boulevard, Suite 150, Rockville, MD 20850

.....

klnb.com

 facebook.com/KLNBCRE

 linkedin.com/company/klnb

 instagram.com/klnbcre

[CLICK TO VIEW PROPERTY WEBSITE](#)

[CLICK HERE FOR A VIDEO TOUR](#)

While we have no reason to doubt the accuracy of any of the information supplied, we cannot, and do not, guarantee its accuracy. All information should be independently verified prior to a purchase or lease of the property. We are not responsible for errors, omissions, misuse, or misinterpretation of information contained herein and make no warranty of any kind, express or implied, with respect to the property or any other matters.