



FOR LEASE

## PROPERTY HIGHLIGHTS

### Building Specifications

- Building Type: Office
- Year Built: 1978
- Building Size: 59,921 SF
- Building Height: 5 Stories
- Typical Floor Size: 12,000 SF
- Parking: 226 Spaces

### Features

- Ample surface and structured parking
- Public transportation is available through Montgomery County's "Ride On" program
- Abundance of amenities, food service options and retail centers within walking distance

### Location

- Quick access to I-270 and I-495
- Two WMATA Metro stops (Twinbrook & North Bethesda) are within 2 miles



# SARATOGA BUILDING

11820 Parklawn Drive | Rockville, MD

## MARKET AERIAL

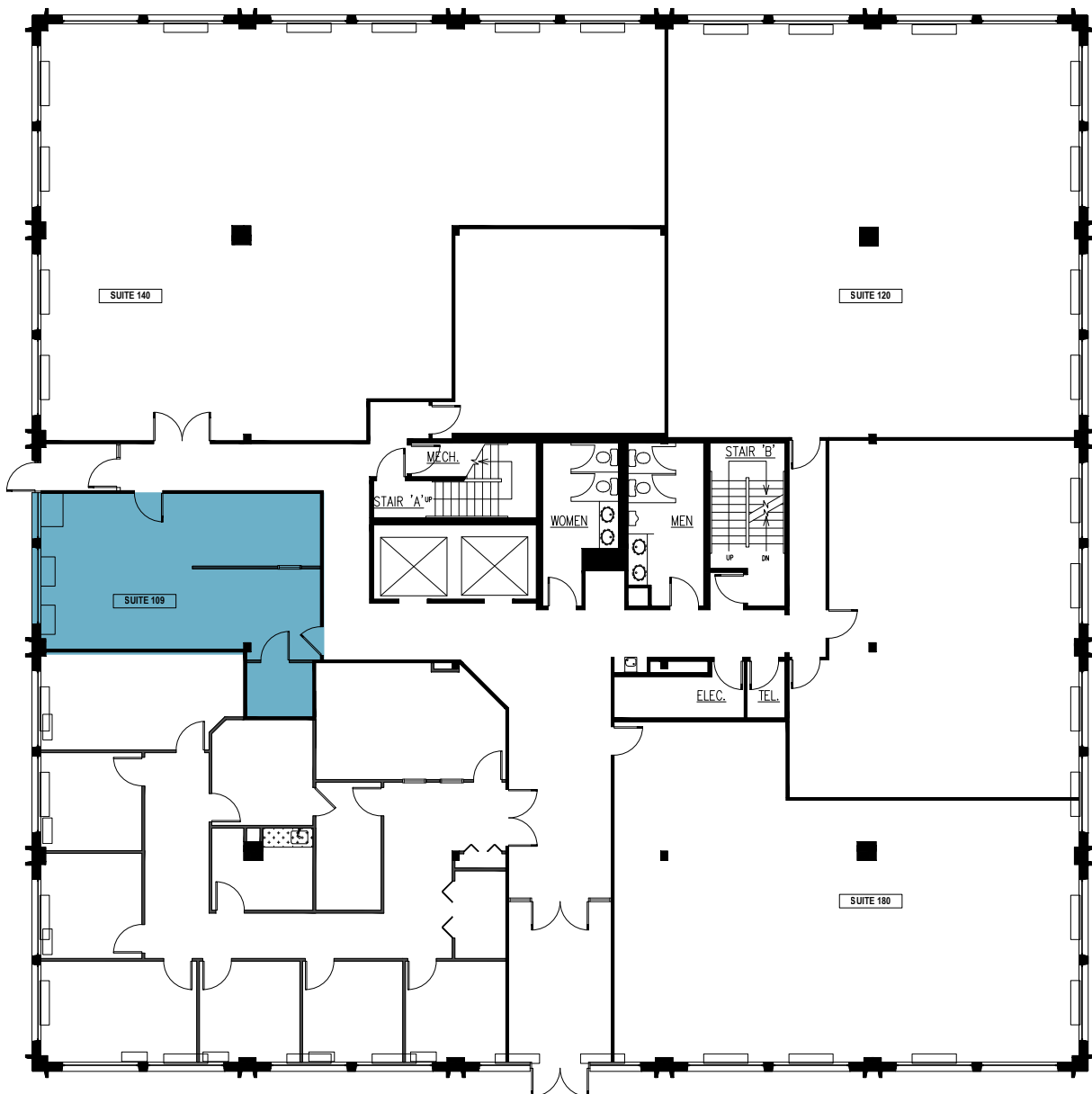


Kenneth Fellows  
kfellows@klnb.com  
301-222-0210

Robert Pugh  
rpugh@klnb.com  
301-222-0211

Keiry Martinez  
kmartinez@klnb.com  
703-334-5629

## FLOOR PLAN - 1ST FLOOR



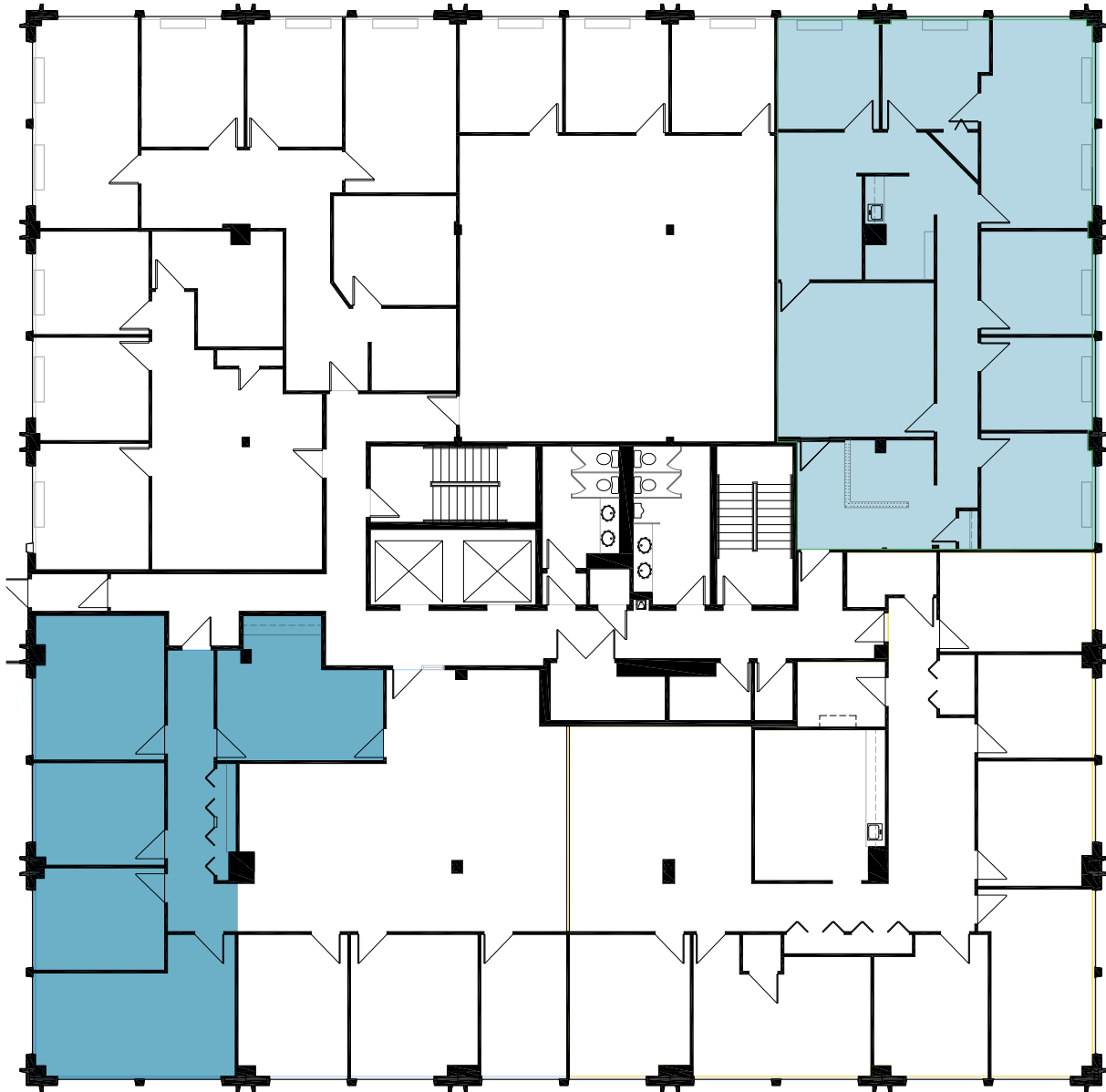
**SUITE 109**  
607 SF



# SARATOGA BUILDING

11820 Parklawn Drive | Rockville, MD

## FLOOR PLAN - 2ND FLOOR



**SUITE 200**  
1,364 SF

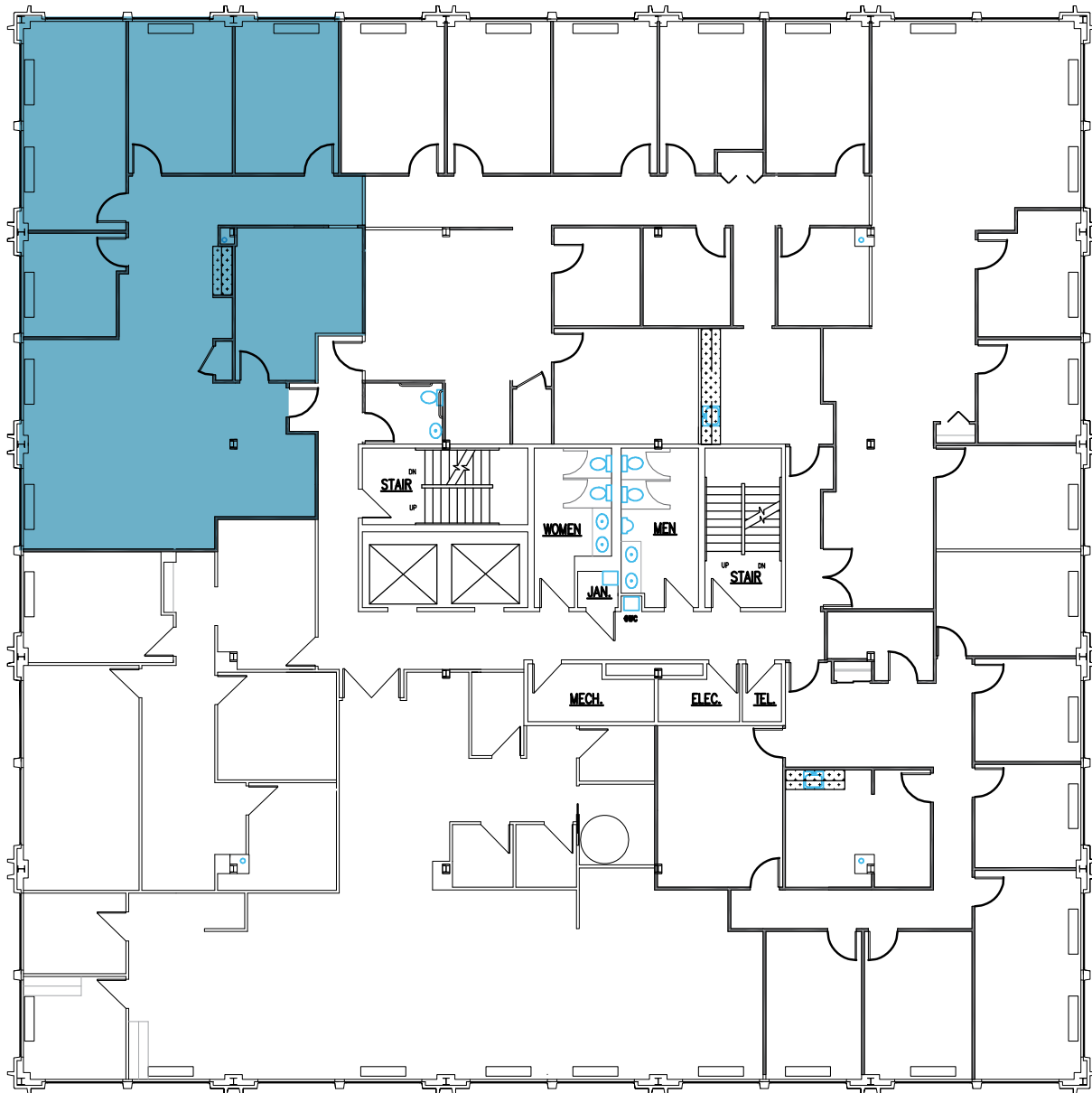
**SUITE 240**  
1,987 SF

**Kenneth Fellows**  
kfellows@klnb.com  
301-222-0210

**Robert Pugh**  
rpugh@klnb.com  
301-222-0211

**Keiry Martinez**  
kmartinez@klnb.com  
703-334-5629

## FLOOR PLAN - 5TH FLOOR



**SUITE 520**  
**2,324 SF**

# SARATOGA BUILDING

11820 Parklawn Drive | Rockville, MD

PHOTO



**Kenneth Fellows**  
kfellows@klnb.com  
301-222-0210

**Robert Pugh**  
rpugh@klnb.com  
301-222-0211

**Keiry Martinez**  
kmartinez@klnb.com  
703-334-5629



PHOTO



# SARATOGA BUILDING

11820 Parklawn Drive | Rockville, MD

[CLICK TO VIEW PROPERTY WEBSITE](#)

For More Information, Please Contact:

**Kenneth Fellows**

[kfellows@klnb.com](mailto:kfellows@klnb.com)

301-222-0210

**Robert Pugh**

[rpugh@klnb.com](mailto:rpugh@klnb.com)

301-222-0211

**Keiry Martinez**

[kmartinez@klnb.com](mailto:kmartinez@klnb.com)

703-334-5629

2273 Research Blvd, Suite 150  
Rockville, MD 20850

[klnb.com](http://klnb.com)



[instagram.com/klnbcre](https://www.instagram.com/klnbcre)



[linkedin.com/company/klnb](https://www.linkedin.com/company/klnb)



[facebook.com/KLNBCRE](https://www.facebook.com/KLNBCRE)

While we have no reason to doubt the accuracy of any of the information supplied, we cannot, and do not, guarantee its accuracy. All information should be independently verified prior to a purchase or lease of the property. We are not responsible for errors, omissions, misuse, or misinterpretation of information contained herein and make no warranty of any kind, express or implied, with respect to the property or any other matters.

**klnb**