

# CATONSVILLE PLAZA

5457 Baltimore National Pike, Baltimore, MD 21229  
Baltimore County



JOIN:



- Available: 2,220 SF
- Rare opportunity to lease in the 280,000 SF center strategically located directly on Route 40 just East of I-695
- Strong visibility to Route 40



[Click Here To WATCH VIDEO OF PROPERTY](#)

**Matt Copeland**  
mcopeland@klnb.com  
443-632-2051

**Michael Ginsburg**  
mginsburg@klnb.com  
443-632-2041

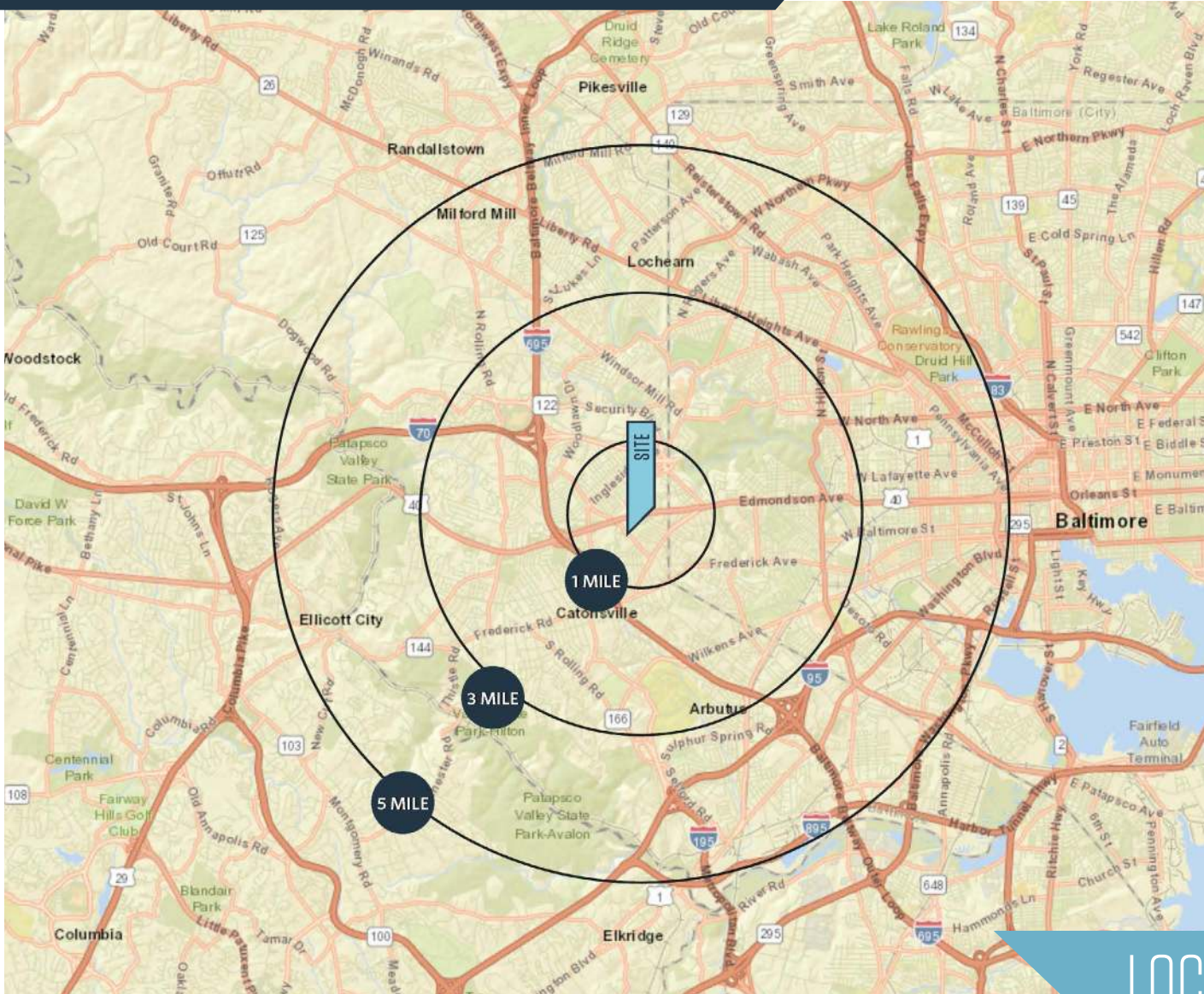
100 West Road, Suite 505  
Towson, MD 21204  
**klnb.com**

**klnb**



# CATONSVILLE PLAZA

5457 Baltimore National Pike, Baltimore, MD 21229  
Baltimore County



## AVAILABLE SPACE

- 2,220 SF

## DEMOGRAPHICS | 2023:

1-MILE	3-MILE	5-MILE
Population		
23,232	144,269	352,407
Daytime Population		
16,346	139,044	343,755
Households		
9,497	56,465	140,271
Average HH Income		
\$91,645	\$90,659	\$85,594

[CLICK TO DOWNLOAD DEMOGRAPHIC REPORT](#)

## TRAFFIC COUNTS | 2022:

Baltimore National Pike 23,081 ADT

## LOCATION & DEMOGRAPHICS

**Matt Copeland**  
mcopeland@klnb.com  
443-632-2051

**Michael Ginsburg**  
mginsburg@klnb.com  
443-632-2041

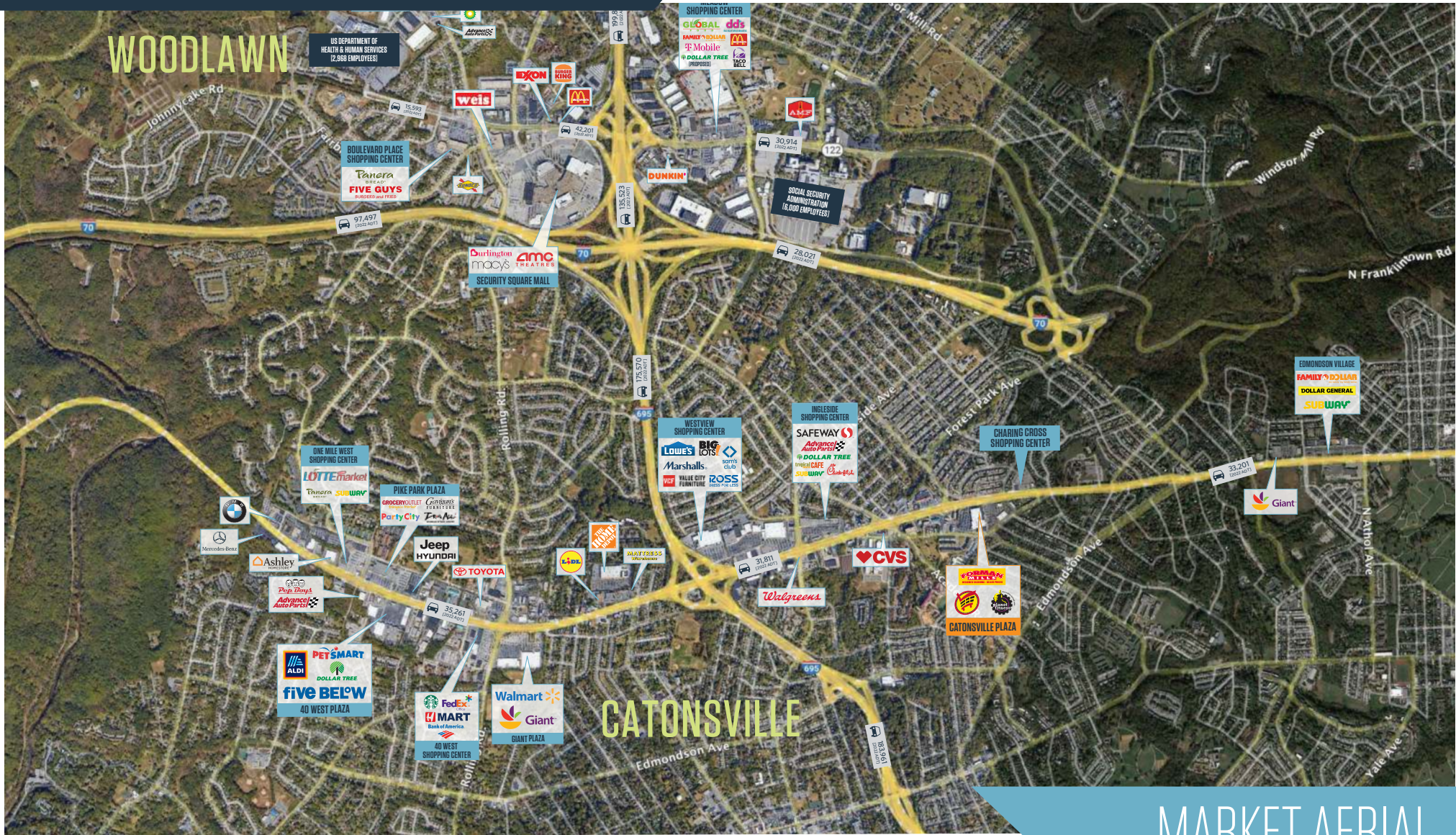
100 West Road, Suite 505  
Towson, MD 21204  
**klnb.com**





# CATONSVILLE PLAZA

5457 Baltimore National Pike, Baltimore, MD 21229  
Baltimore County



MARKET AERIAL

Matt Copeland  
mcopeland@klnb.com  
443-632-2051

Michael Ginsburg  
mginsburg@klnb.com  
443-632-2041

100 West Road, Suite 505  
Towson, MD 21204  
klnb.com

klnb



# CATONSVILLE PLAZA

5457 Baltimore National Pike, Baltimore, MD 21229  
Baltimore County



SITE PLAN

Matt Copeland  
mcopeland@klnb.com  
443-632-2051

Michael Ginsburg  
mginsburg@klnb.com  
443-632-2041

100 West Road, Suite 505  
Towson, MD 21204  
klnb.com



# CATONSVILLE PLAZA

5457 Baltimore National Pike, Baltimore, MD 21229  
Baltimore County

[CLICK TO VIEW PROPERTY WEBSITE](#)

For More Information, Please Contact:

**Matt Copeland**

mcopeland@klnb.com  
443-632-2051

**Michael Ginsburg**

mginsburg@klnb.com  
443-632-2041

100 West Road, Suite 505  
Towson, MD 21204

[klnb.com](http://klnb.com)



[instagram.com/klnbcre](https://www.instagram.com/klnbcre)



[linkedin.com/company/klnb](https://www.linkedin.com/company/klnb)



[facebook.com/KLNBCRE](https://www.facebook.com/KLNBCRE)

While we have no reason to doubt the accuracy of any of the information supplied, we cannot, and do not, guarantee its accuracy. All information should be independently verified prior to a purchase or lease of the property. We are not responsible for errors, omissions, misuse, or misinterpretation of information contained herein and make no warranty of any kind, express or implied, with respect to the property or any other matters.

**klnb**