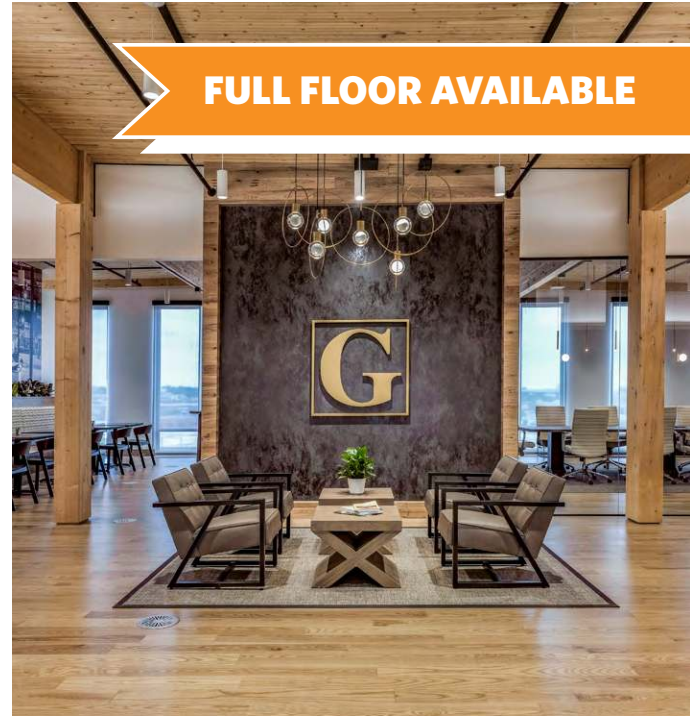


COLLECTIVE AT CANTON

4010 Boston Street, Baltimore, MD 21224
Baltimore City - Canton Area



↓ [CLICK HERE FOR DESIGN/SPECIFICATIONS](#)



BALTIMORE'S FIRST MASS TIMBER OFFICE BUILDING - 101,000 RSF TOTAL

PROPERTY HIGHLIGHTS:

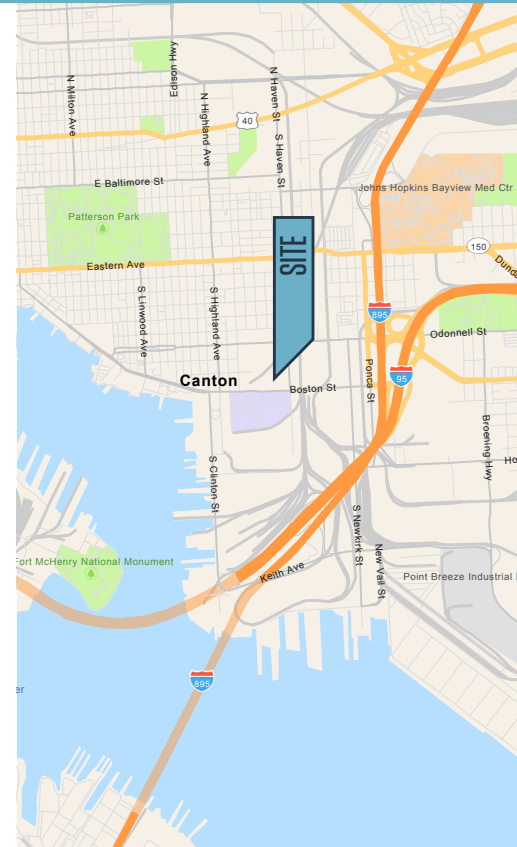
Collective Project Features

- Opportunity Zone
- Enterprise Zone
- Brownfields Development
- Strong millennial workforce
- Mixed use
 - » 500 apartments
 - » 60,000 SF retail
 - » Celebree daycare center
- Close proximity to I-95 and I-895

Office Building Features

- Sustainable design
- Under-floor HVAC
 - » 18" raised floors
 - » Improved air quality
 - » Flexible tenant control
- 28,000 RSF - per floor (floors 2-4)
- First floor daycare
- Free on-site covered parking - 3/1,000 SF
- Smart glass on south & west sides of the building
- Full service leases (net of utilities)

CANTON CROSSING NEIGHBORS:

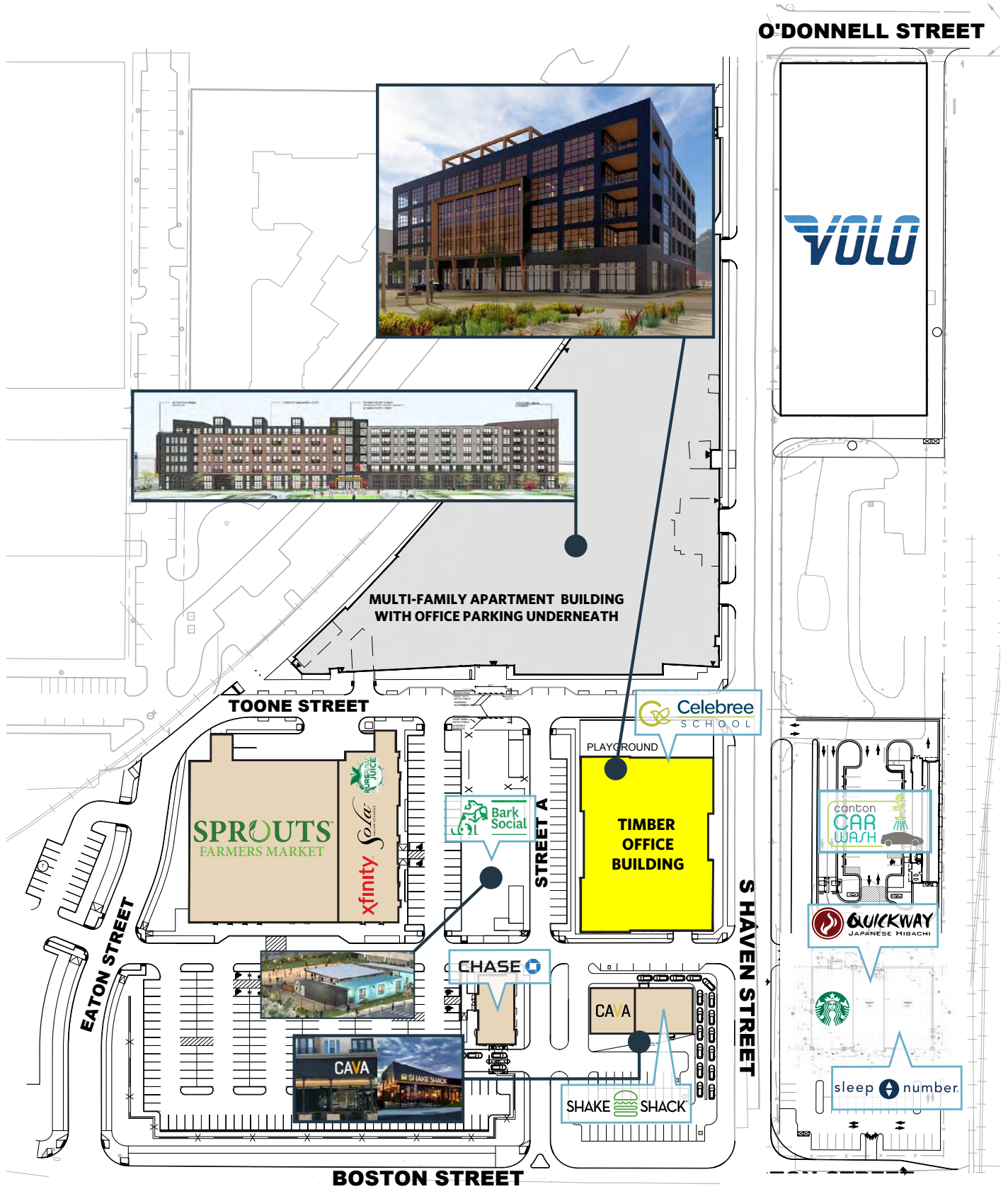


Joe Nolan, SIOR
jnolan@klnb.com
443-632-2065

100 West Road, Suite 505
Towson, MD 21204
klnb.com



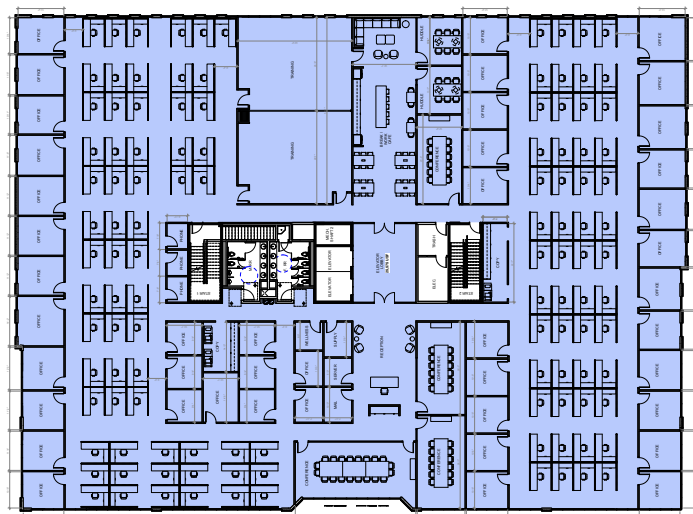
PROJECT SITE PLAN



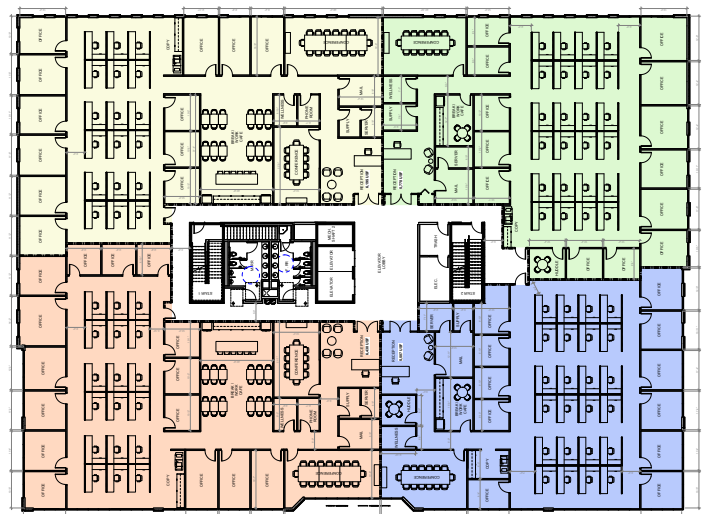
BUILDING SITE PLAN



SAMPLE FULL FLOOR USER FLOOR PLAN - ±28,000 RSF



SAMPLE MULTI-TENANT FLOOR PLAN - ±28,000 RSF



COLLECTIVE AT CANTON

Baltimore, MD 21224 - Baltimore City, Canton Area



PHOTOS



FIRST FLOOR LOBBY



TENANT SPACE



FIRST FLOOR LOBBY



TENANT SPACE



UPPER FLOOR LOBBY



TENANT SPACE

While we have no reason to doubt the accuracy of any of the information supplied, we cannot, and do not, guarantee its accuracy. All information should be independently verified prior to a purchase or lease of the property. We are not responsible for errors, omissions, misuse, or misinterpretation of information contained herein and make no warranty of any kind, express or implied, with respect to the property or any other matters.

Joe Nolan, SIOR
jnolan@klnb.com
443-632-2065

100 West Road, Suite 505
Towson, MD 21204
klnb.com