



## NEARBY RETAILERS



## LAND FOR SALE OR LEASE

- 3.6 Acres zoned B2
- Located near Washington, DC and Baltimore metro areas
- Part of Frederick County, which has seen major economic growth in recent years
- Direct Visibility from Route 15

# 10201 TANEYTOWN PIKE

10201 TANEYTOWN PIKE, EMMITSBURG, MD 21727, FREDERICK COUNTY

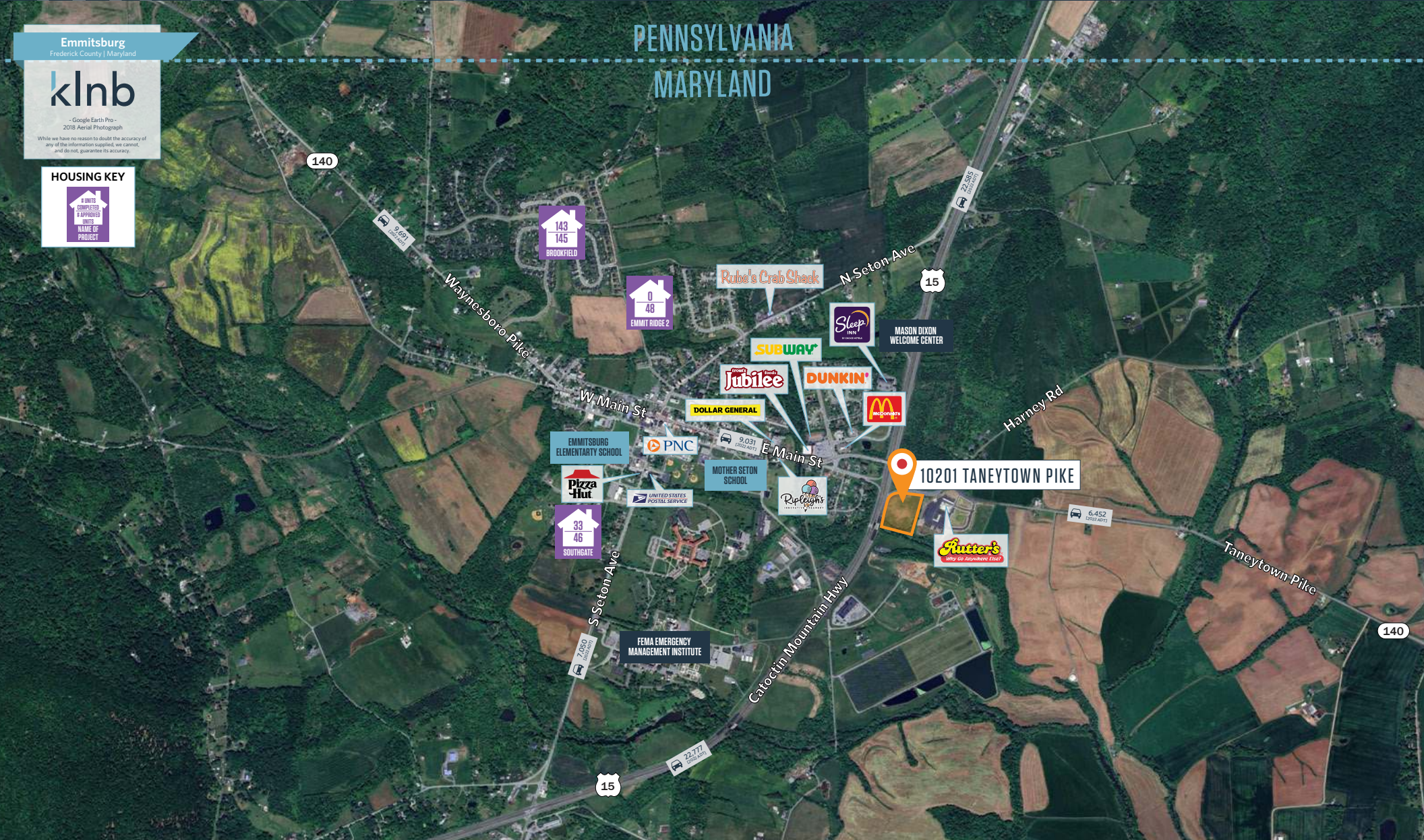
Emmitsburg  
Frederick County | Maryland

## klnb

- Google Earth Pro -  
2018 Aerial Photograph  
While we have no reason to doubt the accuracy of  
any of the information supplied, we cannot,  
and do not, guarantee its accuracy.

### HOUSING KEY

- 1 UNIT COMPLETED
- 8 APPROVED UNITS
- NAME OF PROJECT



**BO GALLES**

bgalles@klnb.com | 703-268-2712

# klnb

# CLOSE UP

## 10201 TANEYTOWN PIKE

10201 TANEYTOWN PIKE, EMMITSBURG, MD 21727, FREDERICK COUNTY



3.6 AC

**BO GALLES**

bgalles@klnb.com | 703-268-2712

**klnb**

# 10201 TANEYTOWN PIKE

10201 TANEYTOWN PIKE, EMMITSBURG, MD 21727, FREDERICK COUNTY



**Placer.ai**  
RUTTERS



**10.6K**  
VISITS PER YEAR



**4.4K**  
UNIQUE VISITORS PER YEAR



**2.41**  
VISIT FREQUENCY

DATA IS FROM APRIL 1, 2023 - MARCH 31, 2024



**BO GALLES**

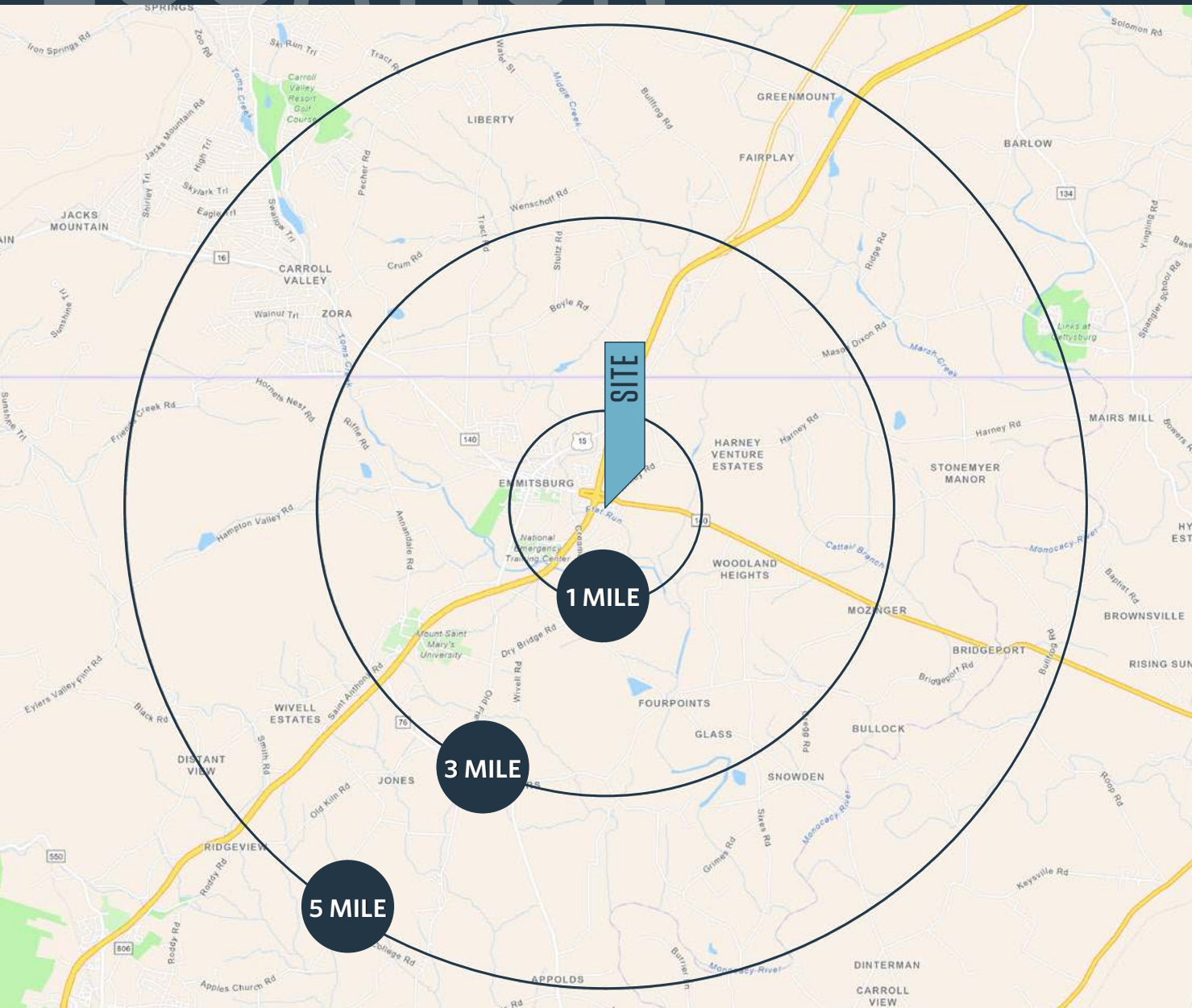
bgalles@klnb.com | 703-268-2712



# LOCATION

# 10201 TANEYTOWN PIKE

10201 TANEYTOWN PIKE, EMMITSBURG, MD 21727, FREDERICK COUNTY



## DEMOGRAPHICS | 2023:

1-MILE	3-MILE	5-MILE
Population		
1,800	6,504	11,338
Daytime Population		
1,529	2,379	4,227
Households		
674	1,724	3,652
Average HH Income		
\$89,636	\$105,801	\$113,748

[CLICK TO DOWNLOAD DEMOGRAPHIC REPORT](#)

## TRAFFIC COUNTS | 2022:

Catoctin Mountain Highway	22,777 ADT
Taneytown Pike	6,452 ADT

**BO GALLES**

bgalles@klnb.com | 703-268-2712





# 10201 TANEYTOWN PIKE

10201 TANEYTOWN PIKE, EMMITSBURG, MD 21727, FREDERICK COUNTY

## FOR MORE INFORMATION, PLEASE CONTACT:

### BO GALLES

[bgalles@klnb.com](mailto:bgalles@klnb.com)

703-268-2712

8065 Leesburg Pike, Suite 700, Tysons, VA 22182

.....

[klnb.com](http://klnb.com)



[instagram.com/klnbcre](https://www.instagram.com/klnbcre)



[linkedin.com/company/klnb](https://www.linkedin.com/company/klnb)



[facebook.com/KLNBCRE](https://www.facebook.com/KLNBCRE)

[CLICK TO VIEW PROPERTY WEBSITE](#)

While we have no reason to doubt the accuracy of any of the information supplied, we cannot, and do not, guarantee its accuracy. All information should be independently verified prior to a purchase or lease of the property. We are not responsible for errors, omissions, misuse, or misinterpretation of information contained herein and make no warranty of any kind, express or implied, with respect to the property or any other matters.