



WOODMORE
TOWNE CENTRE
AT GLENARDEN

WOODMORE
TOWNE CENTRE
AT GLENARDEN



1ST MOST VISITED CENTER
IN PRINCE GEORGE'S COUNTY

44
MINUTE
DWELL TIME

2ND MOST VISITED CENTER
IN MARYLAND

CUSTOMERS
VISIT
8.51X
ANNUALLY

9.3M VISITS

1.1M VISITORS

774.4K AVG. MONTHLY VISITS

[BY ASSET CLASS]





1.9M VISITS ANNUALLY



2.3M VISITS ANNUALLY



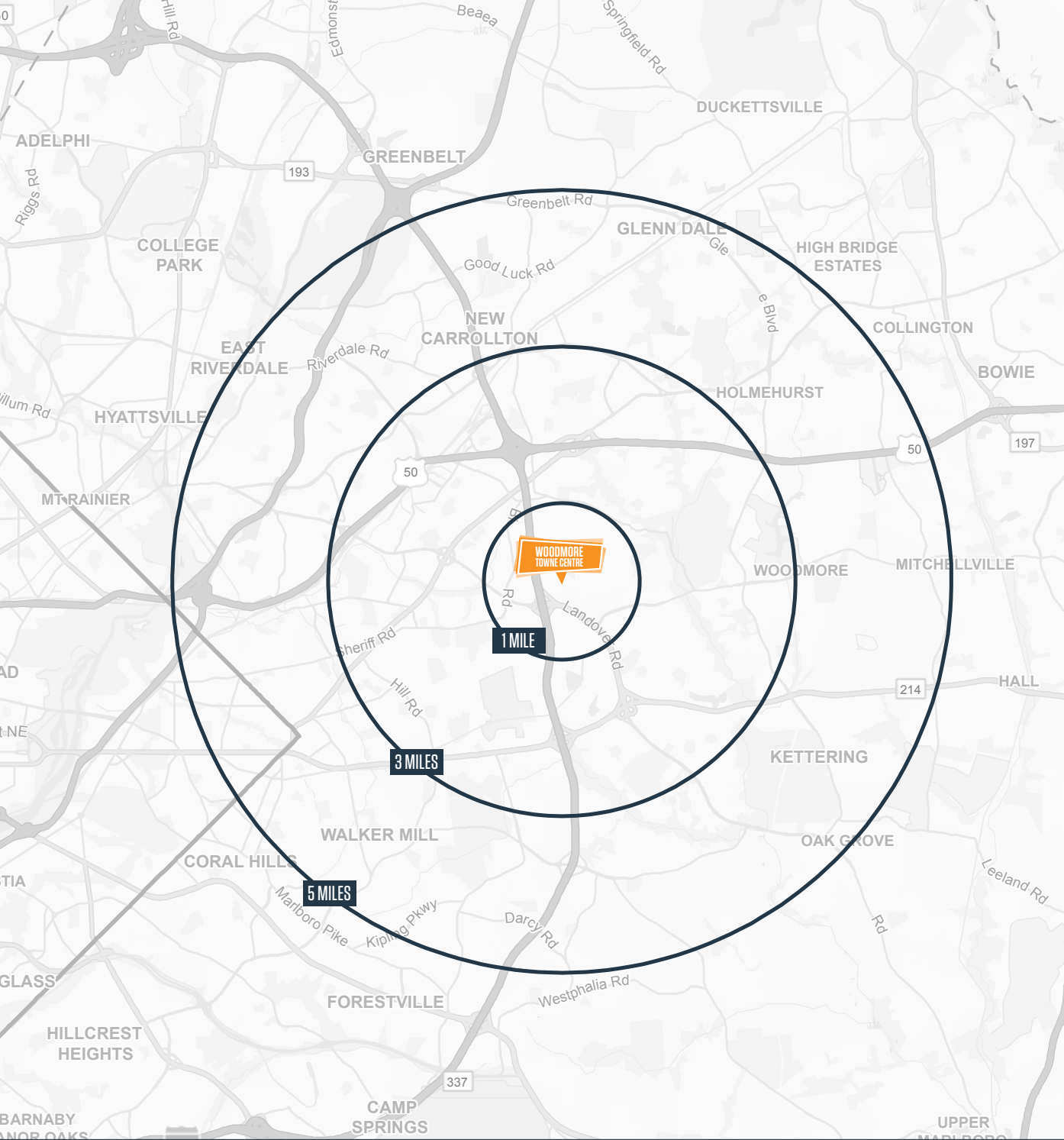
412.7K VISITS ANNUALLY



381.9K VISITS ANNUALLY



378K VISITS ANNUALLY



TOTAL POPULATION

1 Mile	3 Mile	5 Mile
11,975	107,909	305,107



DAYTIME POPULATION

1 Mile	3 Mile	5 Mile
14,922	108,248	253,871



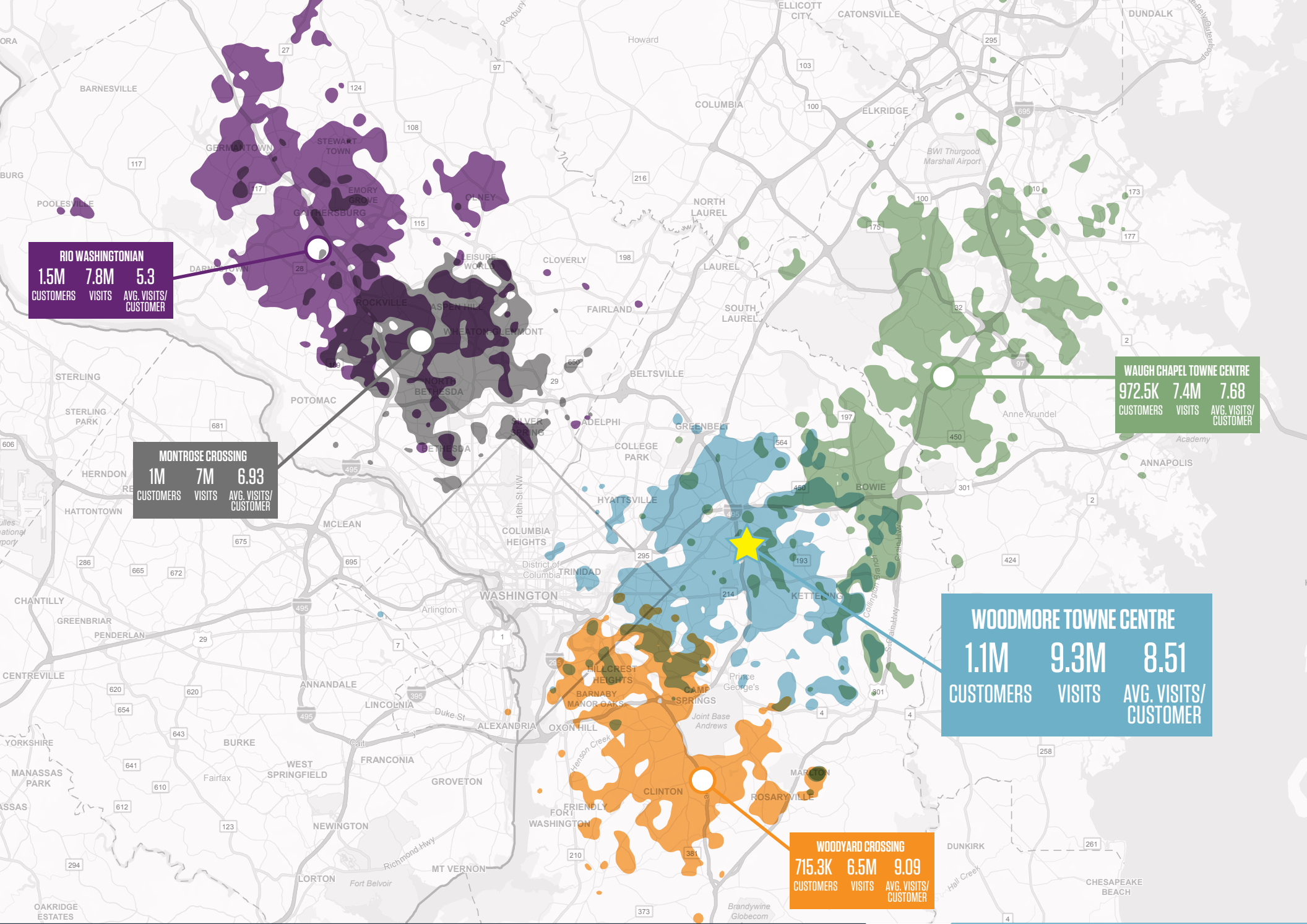
MEDIAN HH INCOME

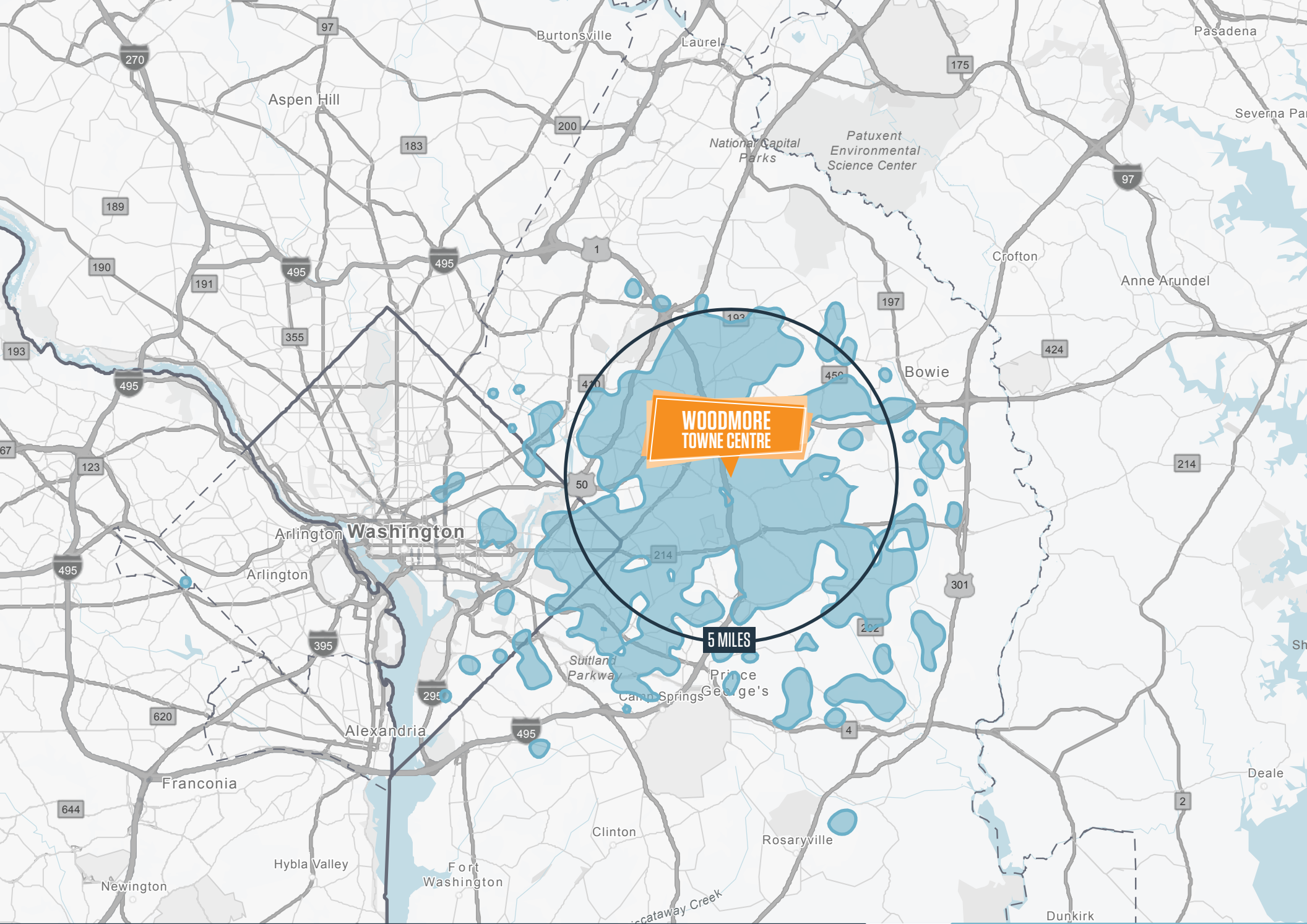
1 Mile	3 Mile	5 Mile
\$113,322	\$94,951	\$91,796

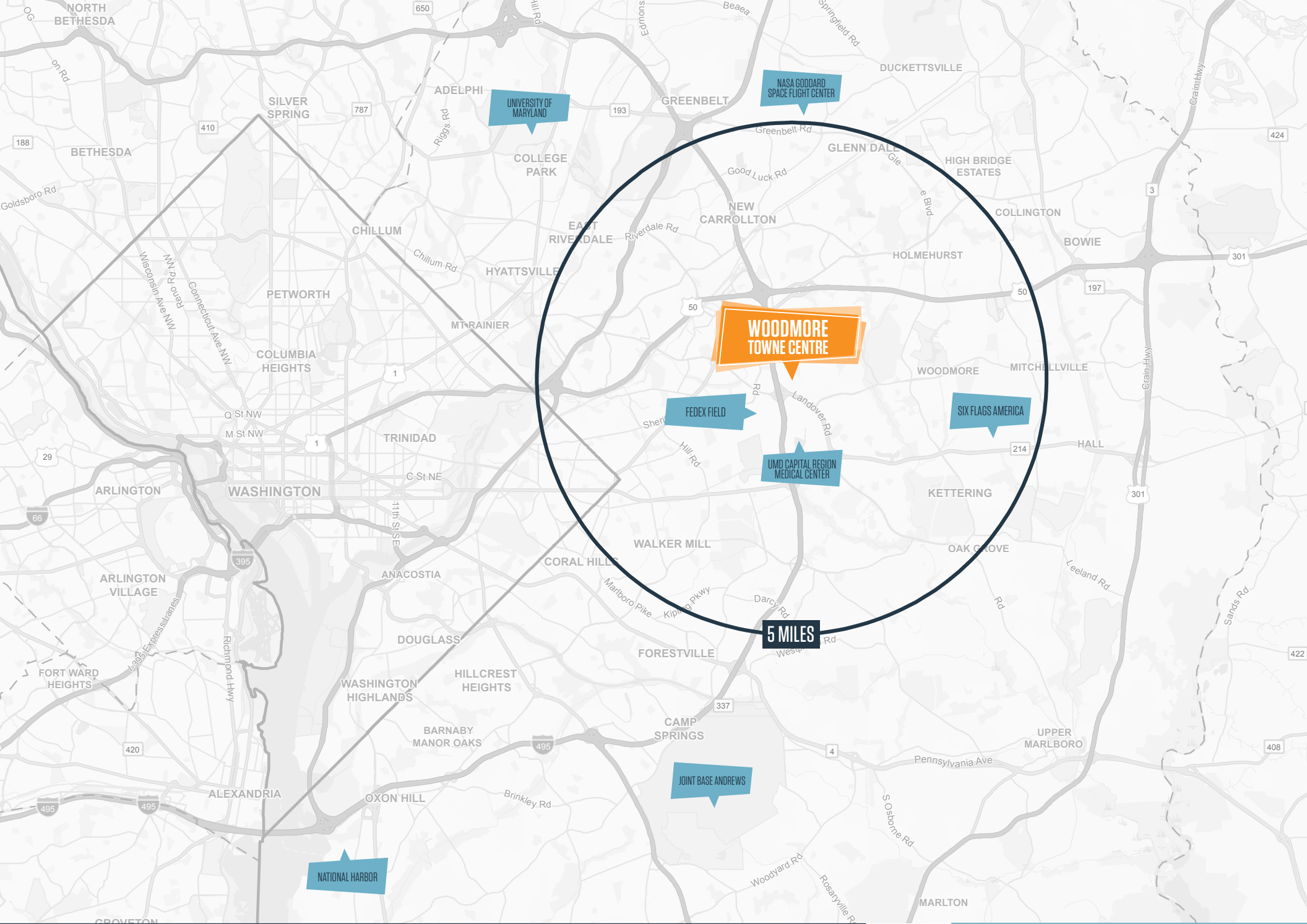


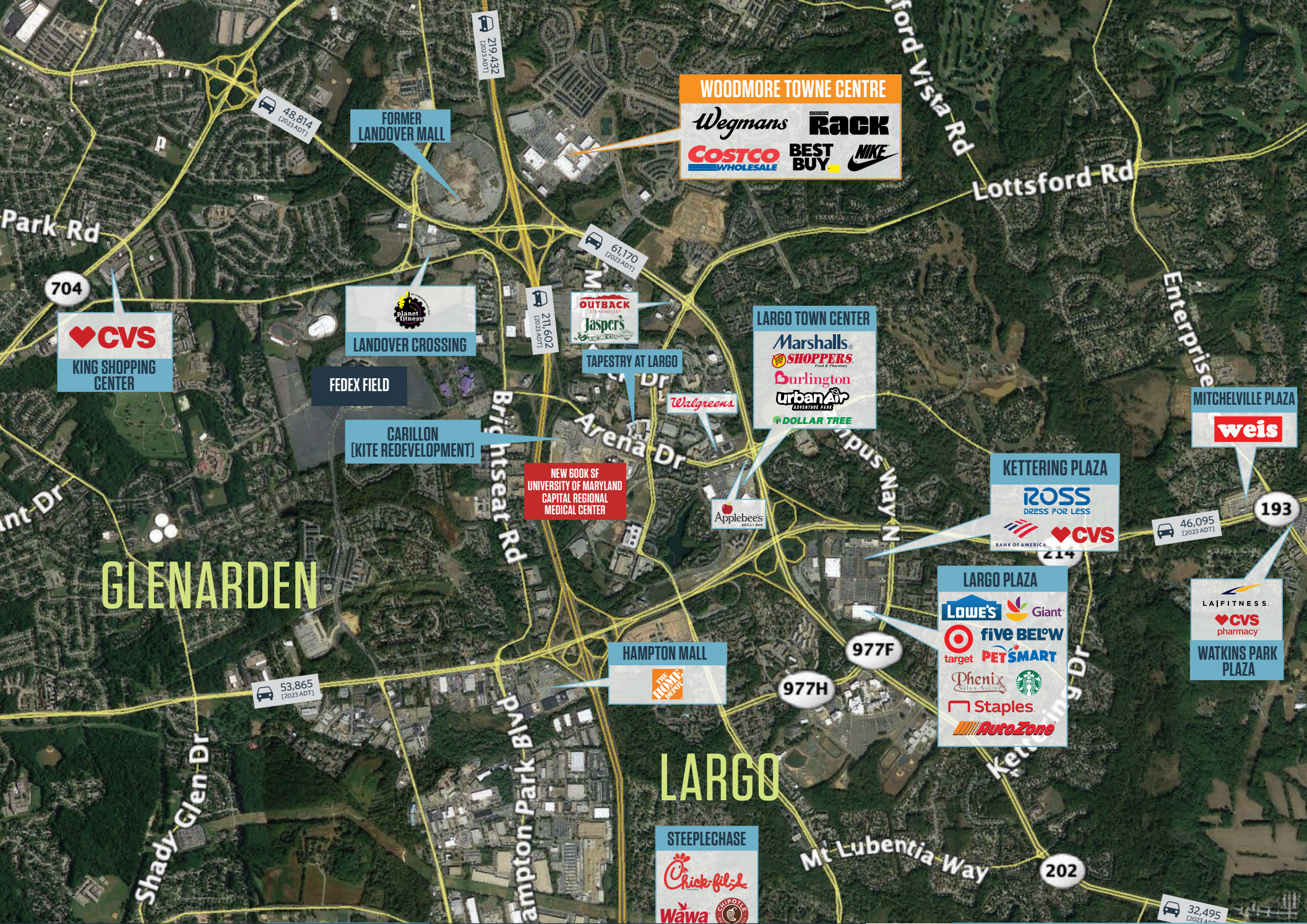
AVERAGE HH INCOME

1 Mile	3 Mile	5 Mile
\$148,928	\$120,511	\$120,780









GLENARDEN

LARGO

CVS
KING SHOPPING CENTER

Planet Fitness
LANDOVER CROSSING

FEDEX FIELD

CARILLON
(KITE REDEVELOPMENT)

NEW 600K SF
UNIVERSITY OF MARYLAND
CAPITAL REGIONAL
MEDICAL CENTER

HAMPTON MALL
THE HOME DEPOT

STEEPLECHASE
Chick-fil-A
Wawa

WOODMORE TOWNE CENTRE
Wegmans **Rack**
COSTCO **BEST BUY** **NIKE**
WHOLESALE

OUTBACK
STEAKHOUSES
Jasper's

TAPESTRY AT LARGO

Walgreens

Applebee's
DAILY BAR

LARGO TOWN CENTER
Marshalls
SHOPPERS
Food & Pharmacy
Burlington
Urban Air
ADVENTURE PARK
DOLLAR TREE

KETTERING PLAZA
ROSS
DRESS FOR LESS
CVS
BANK OF AMERICA

LARGO PLAZA
LOWE'S **Giant**
target **five BELOW**
PETSMART
Phenix
WALTON SALES **Starbucks**
Staples
AutoZone

MITCHELLEVILLE PLAZA
weis

LAI FITNESS
CVS
pharmacy
WATKINS PARK PLAZA



Smithview Pl

Ruby Lockhart Blvd

Ruby Lockhart Blvd

Ruby Lockhart Blvd

St. Josephs Dr

St. Josephs Dr

Capital Beltway

Capital Beltway

219,432
[2023 ADT]

61,170
[2023 ADT]



202

202



Bath & Body Works



± 5,056 SF

13,372 SF

1,045 SF

2,075 SF

2,075 SF

3,728 SF



At Home	96,446 SF	322	Dat Jerk Caribbean Charrill	2,876 SF	503	Gallery Africa	1,392 SF	534	Club Pilates	2,075 SF	620	Bath & Bodyworks	3,738 SF
Costco	148,663 SF	324	Woodmore Tailor	600 SF	504	European Wax Center	1,500 SF	536	Navy Federal Credit Union	5,683 SF	624	Centre Cleaners	1,676 SF
Wegmans	140,000 SF	326	Super Spa & Nails	1,506 SF	505	Wings 21	1,500 SF	538	Pet Supplies	5,257 SF	628	Visionworks	2,588 SF
100 Nordstrom Rack	30,069 SF	400	Sephora	5,062 SF	506	Quickway	1,458 SF	540	Sola Salon	6,343 SF	700	PNC Bank	3,650 SF
102 Crumbl	2,178 SF	402	Last Stop	2,241 SF	507	SweetFrog	1,514 SF	542	Beauty Mart	9,463 SF	702	Starbucks	2,200 SF
103 Cold Stone	1,856 SF	403	Hook & Reel	4,927 SF	508	Crow Royal Barbers	1,078 SF	544	Kumon	2,797 SF	706	Copper Canyon	6,422 SF
104 Ledo Pizza	2,418 SF	404	Milk & honey	1,564 SF	509	Available	1,102 SF	548	Available	3,728 SF	720	LA Fitness	42,154 SF
105 Nando's Peri Peri	3,044 SF	406	Footaction	4,246 SF	510	Kenny's Chinese Food	1,500 SF	550	Smoothie King	1,201 SF	722	Leased	4,813 SF
302 Kobe	6,461 SF	408	Available	1,661 SF	511	Nothing Bundt Cakes	2,019 SF	552	Available 10/1/2025	1,201 SF	2501	Available Pad	5,056 SF
306 Woodmore Wine Store	4,685 SF	410	Roaming Rooster	2,467 SF	512	Available	2,491 SF	600	Edible Arrangements	614 SF	2701	Silver Diner	5,874 SF
310 Noodles & Co.	2,645 SF	412	Turning Natural	1,259 SF	513	Firehouse Subs	2,024 SF	601	Spa 1 Nails	2,000 SF	9100	Cava	2,955 SF
312 Available	13,372 SF	422	Snipes	6,966 SF	514	Chipotle	2,119 SF	602	T-Mobile	2,499 SF			
316 Five Guys	2,630 SF	426	Available	2,077 SF	518	Nike	15,000 SF	605	Kay Jewelers	2,065 SF			
318 UPS Store	1,200 SF	500	Best Buy	45,646 SF	526	Mattress Firm	6,574 SF	614	Tidewater Dental	2,197 SF			
320 Mathnasium	1,438 SF	501	Massage Envy	2,721 SF	532	Old Navy	14,792 SF	616	Pivot	2,200 SF			



100 West Road, Suite 505, Towson, MD 21204

RYAN WILNER
rwilner@klnb.com
443-632-2058

RYAN MINNEHAN
rminnehan@klnb.com
443-632-2088

MICHAEL GINSBURG
mginsburg@klnb.com
443-632-2041

[CLICK TO VIEW PROPERTY WEBSITE](#)

While we have no reason to doubt the accuracy of any of the information supplied, we cannot, and do not, guarantee its accuracy. All information should be independently verified prior to a purchase or lease of the property. We are not responsible for errors, omissions, misuse, or misinterpretation of information contained herein and make no warranty of any kind, express or implied, with respect to the property or any other matters.