

# INTERNATIONAL TRADE CENTER

2408 Peppermill Road, Glen Burnie, MD 21061  
Anne Arundel County

END CAP



## FLEX CONDO FOR SALE / LEASE

### PROPERTY HIGHLIGHTS

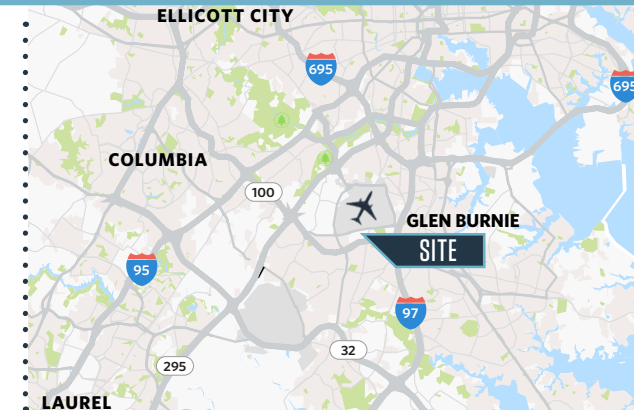
- **Available:** 3,788 square feet
- **Ceiling Height:** 16' clear
- **Loading:** 1 drive-in door
- **Parking:** 4/1,000 parking ratio
- **Zoning:** W-1
- **Access:** Close to Routes 176, 100, 170 & I-97

### NEARBY AMENITIES

COPPERCANYON  
GRILL



LUCIA



**Steele Stanwick**  
sstanwick@klnb.com  
443-574-1420

**Spence Daw**  
sdaw@klnb.com  
443-574-1429

9881 Broken Land Pkwy, #300  
Columbia, MD 21046  
[klnb.com](http://klnb.com)



# INTERNATIONAL TRADE CENTER

2408 Peppermill Road, Glen Burnie, MD 21061  
Anne Arundel County

## 3 MILE DEMOGRAPHICS



**POPULATION**  
65,158



**HOUSEHOLDS**  
24,603



**MEDIAN  
HH INCOME**  
\$99,285



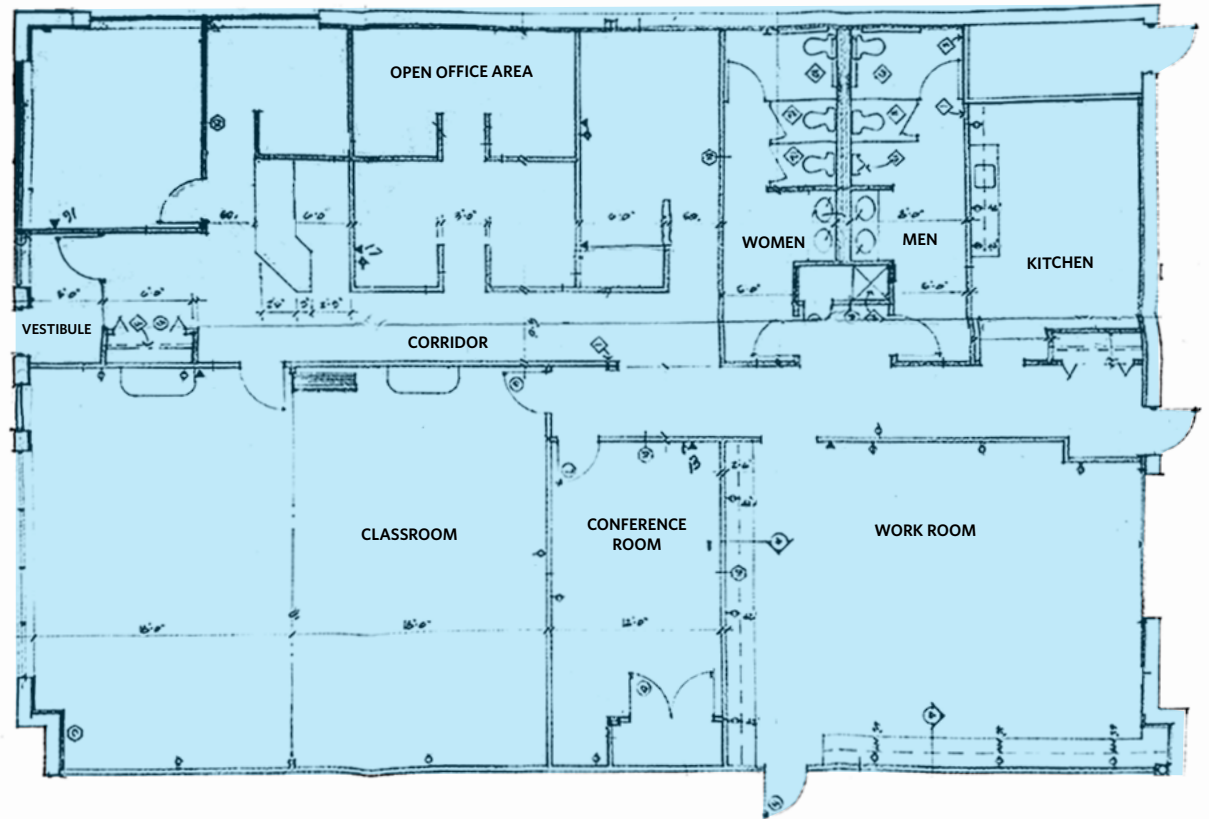
**MEDIAN  
AGE**  
39.0



**TOTAL  
BUSINESSES**  
2,969



**DISPOSABLE  
INCOME**  
\$76,678



3,788 SF FLOOR PLAN

**Steele Stanwick**  
sstanwick@klnb.com  
443-574-1420

**Spence Daw**  
sdaw@klnb.com  
443-574-1429

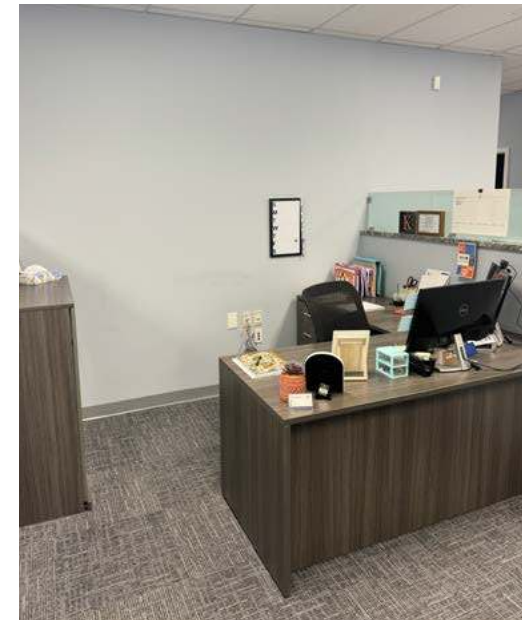
9881 Broken Land Pkwy, #300  
Columbia, MD 21046  
[klnb.com](http://klnb.com)





# INTERNATIONAL TRADE CENTER

2408 Peppermill Road, Glen Burnie, MD 21061  
Anne Arundel County



**Steele Stanwick**  
sstanwick@klnb.com  
443-574-1420

**Spence Daw**  
sdaw@klnb.com  
443-574-1429

9881 Broken Land Pkwy, #300  
Columbia, MD 21046  
[klnb.com](http://klnb.com)





# INTERNATIONAL TRADE CENTER

2408 Peppermill Road, Glen Burnie, MD 21061  
Anne Arundel County



**Steele Stanwick**  
sstanwick@klnb.com  
443-574-1420

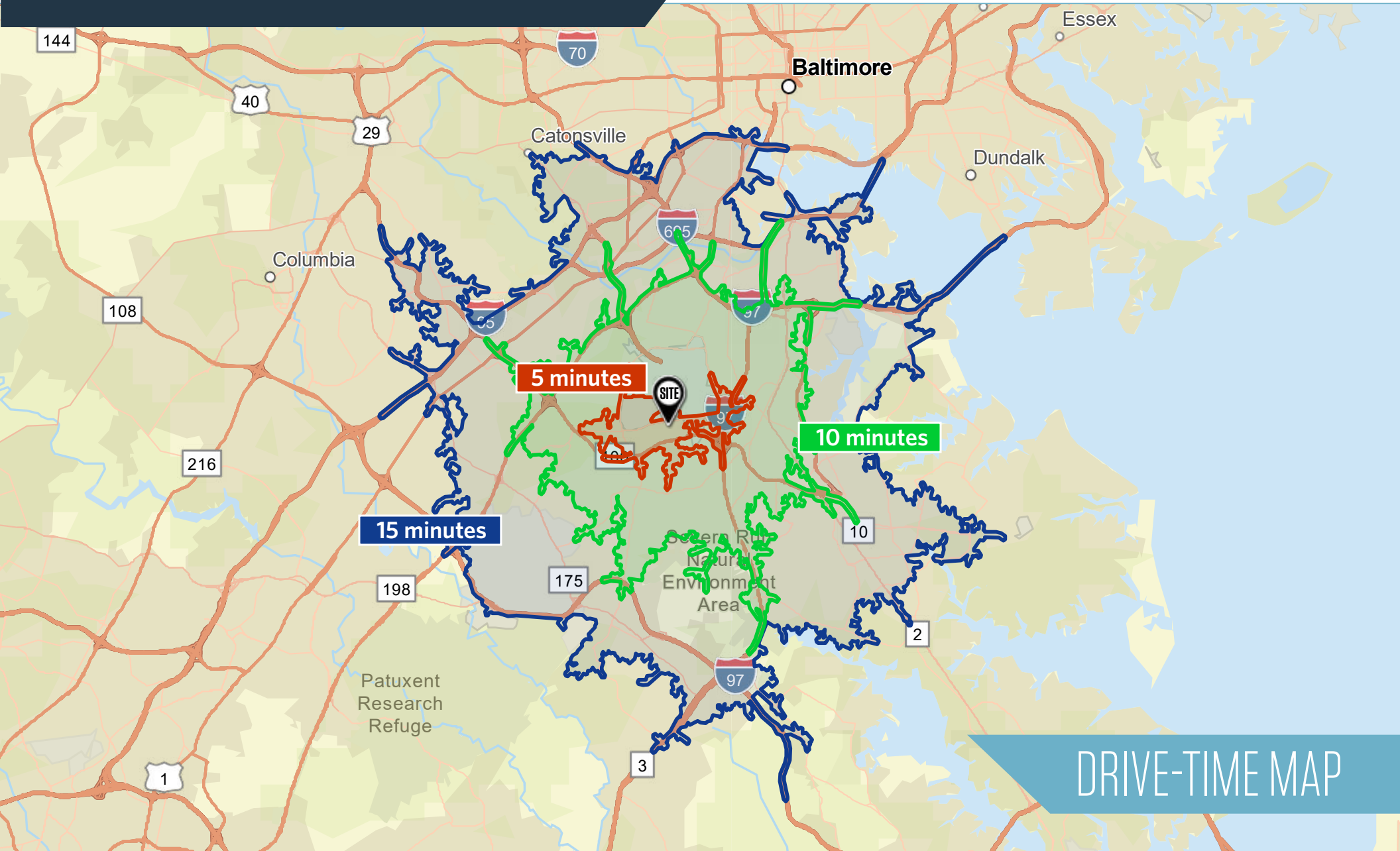
**Spence Daw**  
sdaw@klnb.com  
443-574-1429

9881 Broken Land Pkwy, #300  
Columbia, MD 21046  
**klnb.com**



# INTERNATIONAL TRADE CENTER

2408 Peppermill Road, Glen Burnie, MD 21061  
Anne Arundel County



DRIVE-TIME MAP

**Steele Stanwick**  
sstanwick@klnb.com  
443-574-1420

**Spence Daw**  
sdaw@klnb.com  
443-574-1429

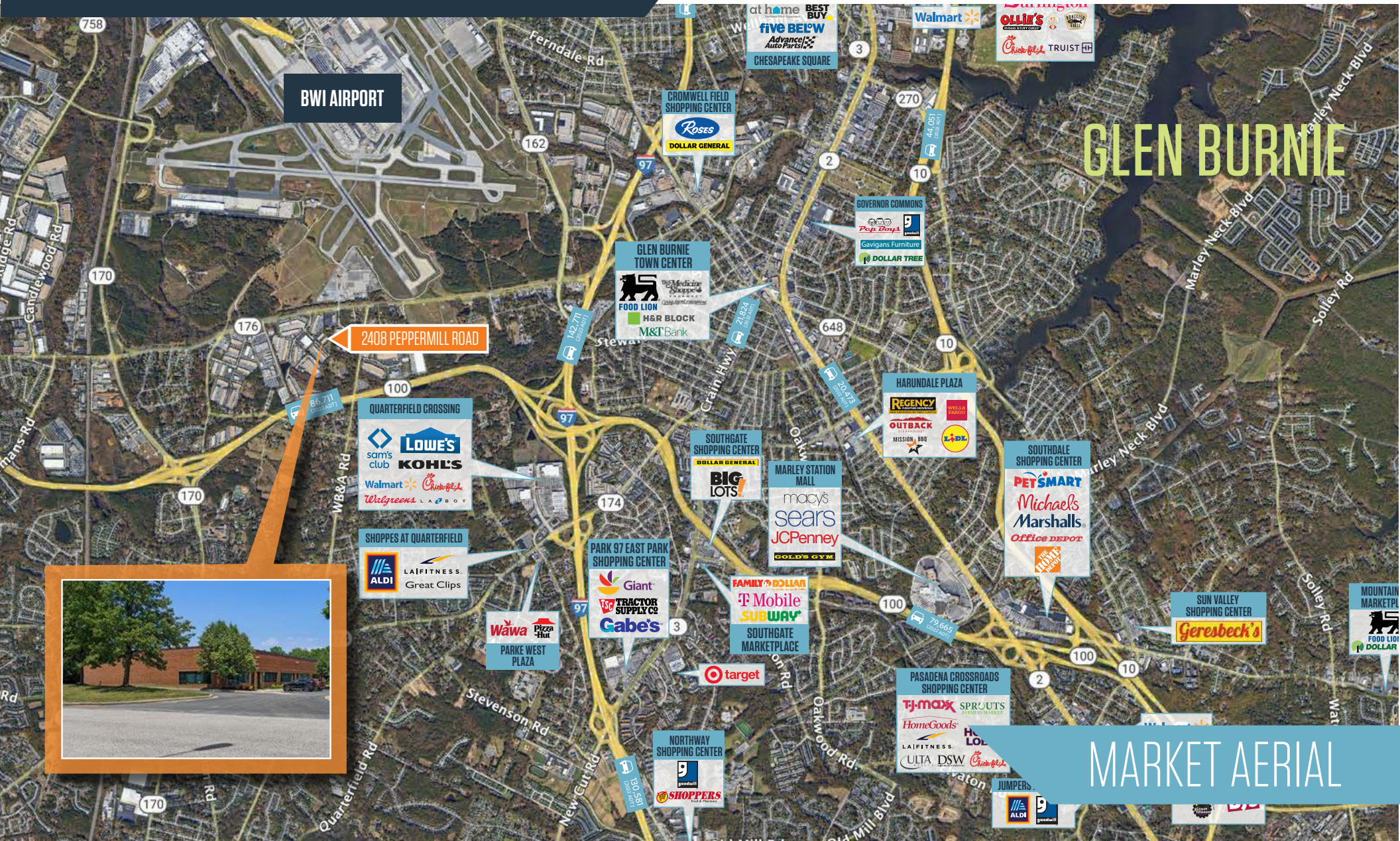
9881 Broken Land Pkwy, #300  
Columbia, MD 21046  
klnb.com





# INTERNATIONAL TRADE CENTER

2408 Peppermill Road, Glen Burnie, MD 21061  
Anne Arundel County



Steele Stanwick  
sstanwick@klnb.com  
443-574-1420

Spence Daw  
sdaw@klnb.com  
443-574-1429

9881 Broken Land Pkwy, #300  
Columbia, MD 21046  
klnb.com





# INTERNATIONAL TRADE CENTER

2408 Peppermill Road, Glen Burnie, MD 21061  
Anne Arundel County

[CLICK TO VIEW PROPERTY WEBSITE](#)

For More Information, Please Contact:

**Steele Stanwick**

sstanwick@klnb.com  
443-574-1420

**Spence Daw**

sdaw@klnb.com  
443-574-1429

9881 Broken Land Parkway, Suite 300  
Columbia, MD 21046

[klnb.com](http://klnb.com)



[instagram.com/klnbcre](https://www.instagram.com/klnbcre)



[linkedin.com/company/klnb](https://www.linkedin.com/company/klnb)



[facebook.com/KLNBCRE](https://www.facebook.com/KLNBCRE)

While we have no reason to doubt the accuracy of any of the information supplied, we cannot, and do not, guarantee its accuracy. All information should be independently verified prior to a purchase or lease of the property. We are not responsible for errors, omissions, misuse, or misinterpretation of information contained herein and make no warranty of any kind, express or implied, with respect to the property or any other matters.

**NAI** klnb