

13860 & 13800 SOLOMONS ISLAND RD

13860 & 13800 Solomons Island Rd, Solomons, MD 20688
Calvert County



NEARBY RETAILERS:



- Conveniently located to service both Saint Mary's and Calvert Counties.
- 2 pad site opportunities at the main entrance to Solomons Harbor Marina.
- Prime visibility with opportunity for free standing signage fronting Solomons Island Road (27,657 ADT).
- Highly underserved market with strong demographics (1 Mile Average Household Incomes of \$155,000).
- TC-D1 Zoning.

Josh Weiner
jweiner@klnb.com
703-268-2715

Matt Skalet
mskalet@klnb.com
202-420-7775

8065 Leesburg Pike, Suite 700
Tysons, VA 22182
klnb.com



13860 & 13800 SOLOMONS ISLAND RD

13860 & 13800 Solomons Island Rd, Solomons, MD 20688
Calvert County



PATUXENT RIVER

13860 SOLOMONS ISLAND RD
1.8 AC

13800 SOLOMONS ISLAND RD
1.54 AC

SOLOMONS TOWNE CENTRE

weis **CVS** pharmacy

TACO BELL **McDonald's** **BURGER KING**

CITGO **FASTOP**

Solomons Inn
RESORT + MARINA

PATUXENT PLAZA

Captain Smith's Seafood **UNITED STATES POSTAL SERVICE** **7 ELEVEN**

Roy Rogers **West Marine**

citibank

SOLOMONS ISLAND

MARKET AERIAL

Josh Weiner
jweiner@klnb.com
703-268-2715

Matt Skalet
mskalet@klnb.com
202-420-7775

8065 Leesburg Pike, Suite 700
Tysons, VA 22182
klnb.com



13860 & 13800 SOLOMONS ISLAND RD

13860 & 13800 Solomons Island Rd, Solomons, MD 20688
Calvert County



Josh Weiner
jweiner@klnb.com
703-268-2715

Matt Skalet
mskalet@klnb.com
202-420-7775

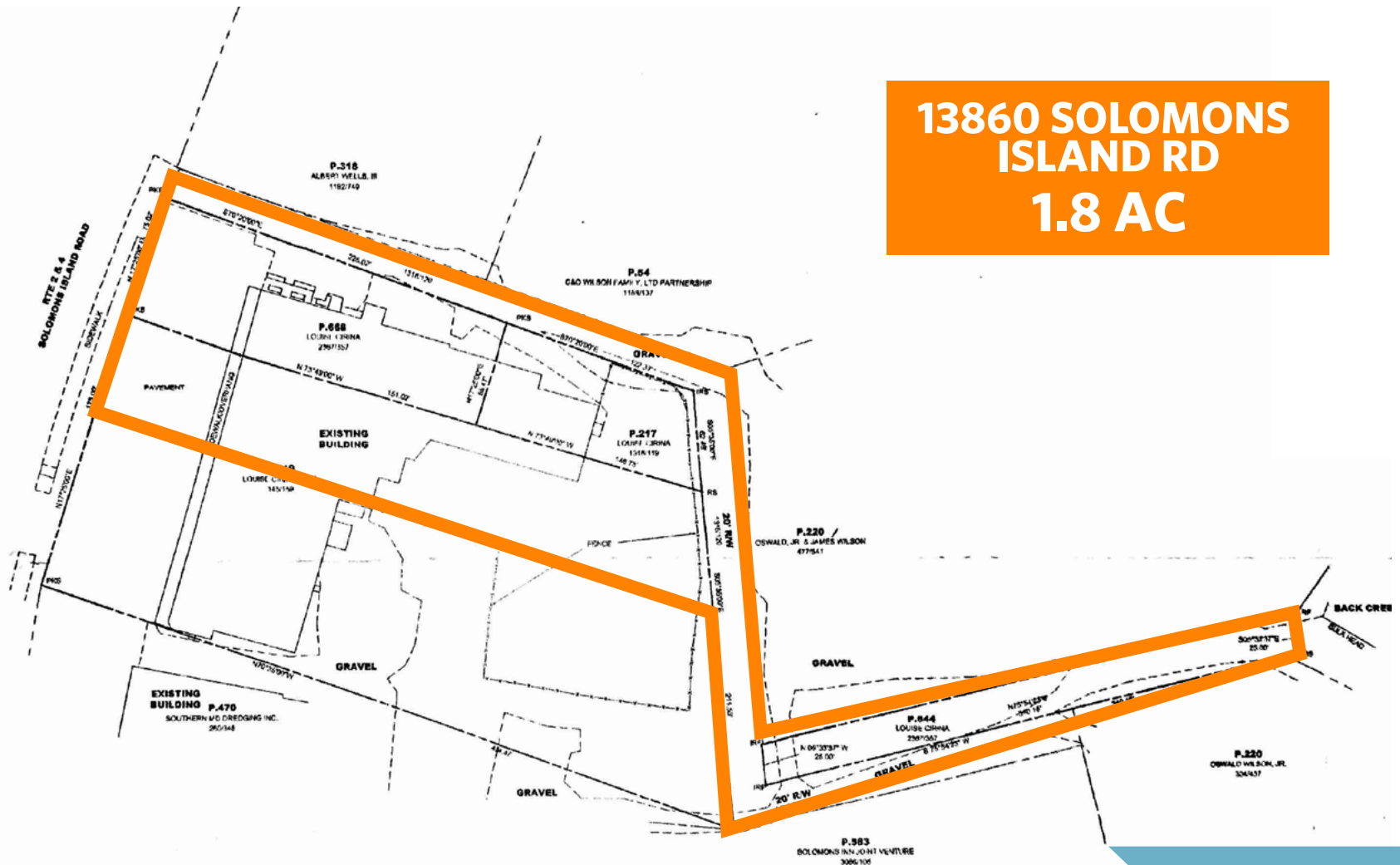
8065 Leesburg Pike, Suite 700
Tysons, VA 22182
klnb.com

klnb

13860 & 13800 SOLOMONS ISLAND RD

13860 & 13800 Solomons Island Rd, Solomons, MD 20688
Calvert County

**13860 SOLOMONS
ISLAND RD
1.8 AC**



SITE PLAN

Josh Weiner
jweiner@klnb.com
703-268-2715

Matt Skalet
mskalet@klnb.com
202-420-7775

8065 Leesburg Pike, Suite 700
Tysons, VA 22182
klnb.com

klnb

13860 & 13800 SOLOMONS ISLAND RD

13860 & 13800 Solomons Island Rd, Solomons, MD 20688
Calvert County



SITE PLAN

Josh Weiner
jweiner@klnb.com
703-268-2715

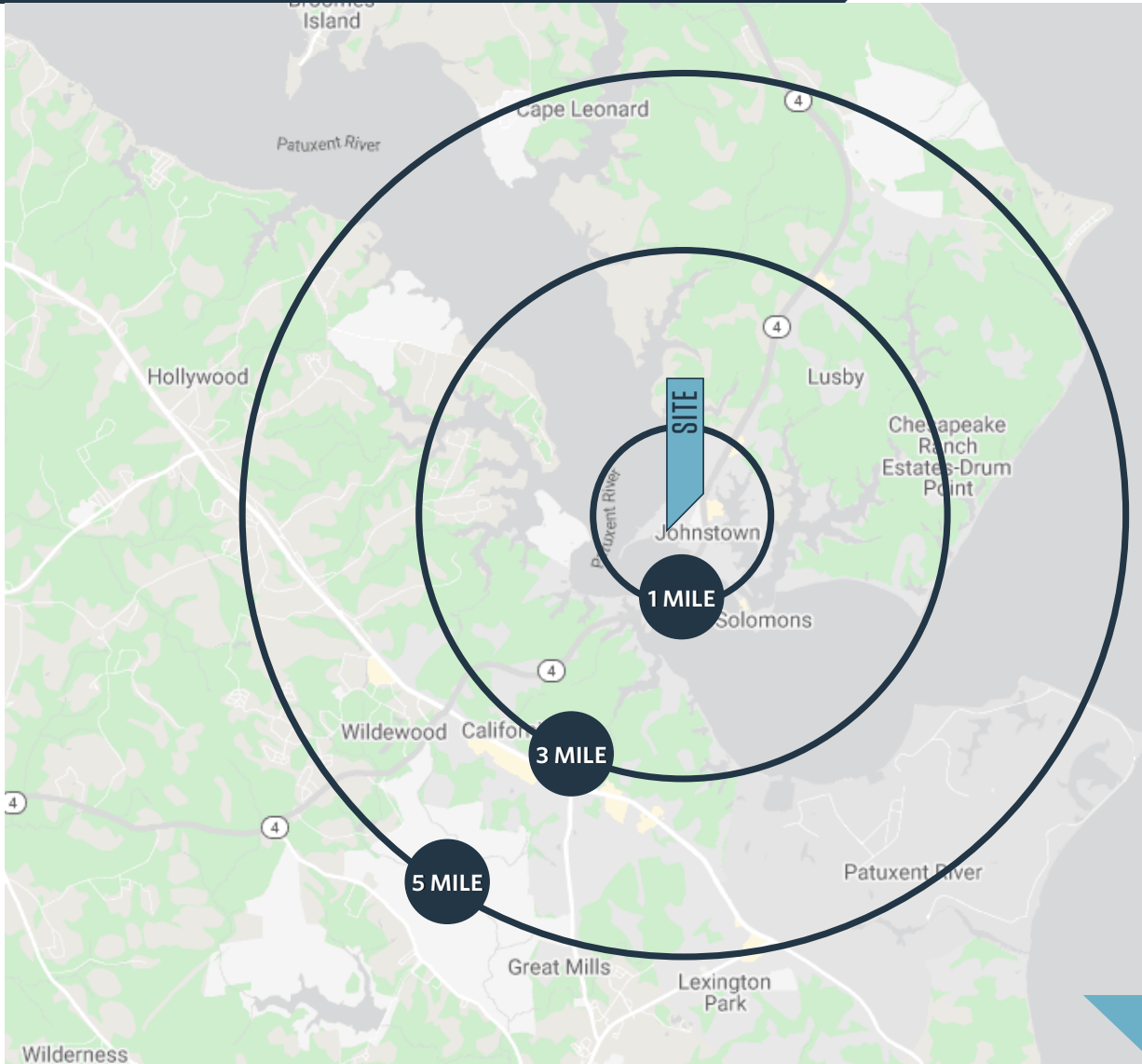
Matt Skalet
mskalet@klnb.com
202-420-7775

8065 Leesburg Pike, Suite 700
Tysons, VA 22182
klnb.com

klnb

13860 & 13800 SOLOMONS ISLAND RD

13860 & 13800 Solomons Island Rd, Solomons, MD 20688
Calvert County



DEMOGRAPHICS | 2023:

| 1-MILE | 3-MILE | 5-MILE | 7-MILE |
|--------------------|-----------|-----------|-----------|
| Population | | | |
| 2,633 | 14,810 | 42,448 | 74,970 |
| Daytime Population | | | |
| 3,477 | 5,769 | 34,463 | 42,044 |
| Households | | | |
| 1,273 | 5,920 | 16,488 | 28,777 |
| Average HH Income | | | |
| \$155,087 | \$162,152 | \$140,804 | \$135,417 |

[CLICK TO DOWNLOAD DEMOGRAPHIC REPORT](#)

TRAFFIC COUNTS | 2022:

Island Rd 27,657 ADT

LOCATION & DEMOGRAPHICS

Josh Weiner
jweiner@klnb.com
703-268-2715

Matt Skalet
mskalet@klnb.com
202-420-7775

8065 Leesburg Pike, Suite 700
Tysons, VA 22182
klnb.com



13860 SOLOMONS ISLAND ROAD

13860 & 13800 Solomons Island Rd, Solomons, MD 20688
Calvert County

[CLICK TO VIEW PROPERTY WEBSITE](#)

For More Information, Please Contact:

Josh Weiner

jweiner@klnb.com

703-268-2715

Matt Skalet

mkalet@klnb.com

202-420-7775

8065 Leesburg Pike, Suite 700
Tysons, VA 22182

klnb.com



[instagram.com/klnbcre](https://www.instagram.com/klnbcre)



[linkedin.com/company/klnb](https://www.linkedin.com/company/klnb)



[facebook.com/KLNBCRE](https://www.facebook.com/KLNBCRE)

While we have no reason to doubt the accuracy of any of the information supplied, we cannot, and do not, guarantee its accuracy. All information should be independently verified prior to a purchase or lease of the property. We are not responsible for errors, omissions, misuse, or misinterpretation of information contained herein and make no warranty of any kind, express or implied, with respect to the property or any other matters.