

# RELIGIOUS / CHILDCARE BUILDING ON 6.58 ACRES (286,624 SF)

25350 Poland Road, Chantilly, VA 21052  
Loudoun County



## FOR SALE

## PROPERTY HIGHLIGHTS

- **Land:** 6.58 Acres (286,624 SF) For Sale
- **Zoning:** CLI
- **Daycare:** Licensed daycare for 190 students
- **Classrooms:** 10 classrooms
- **Size:** 12,500 square foot building (religious & daycare use)
- **Outside Area:** Secure playground at rear of the building
- **Green Space:** 2+ acres of green space
- **Parking:** Ample parking for pick-up and drop-off

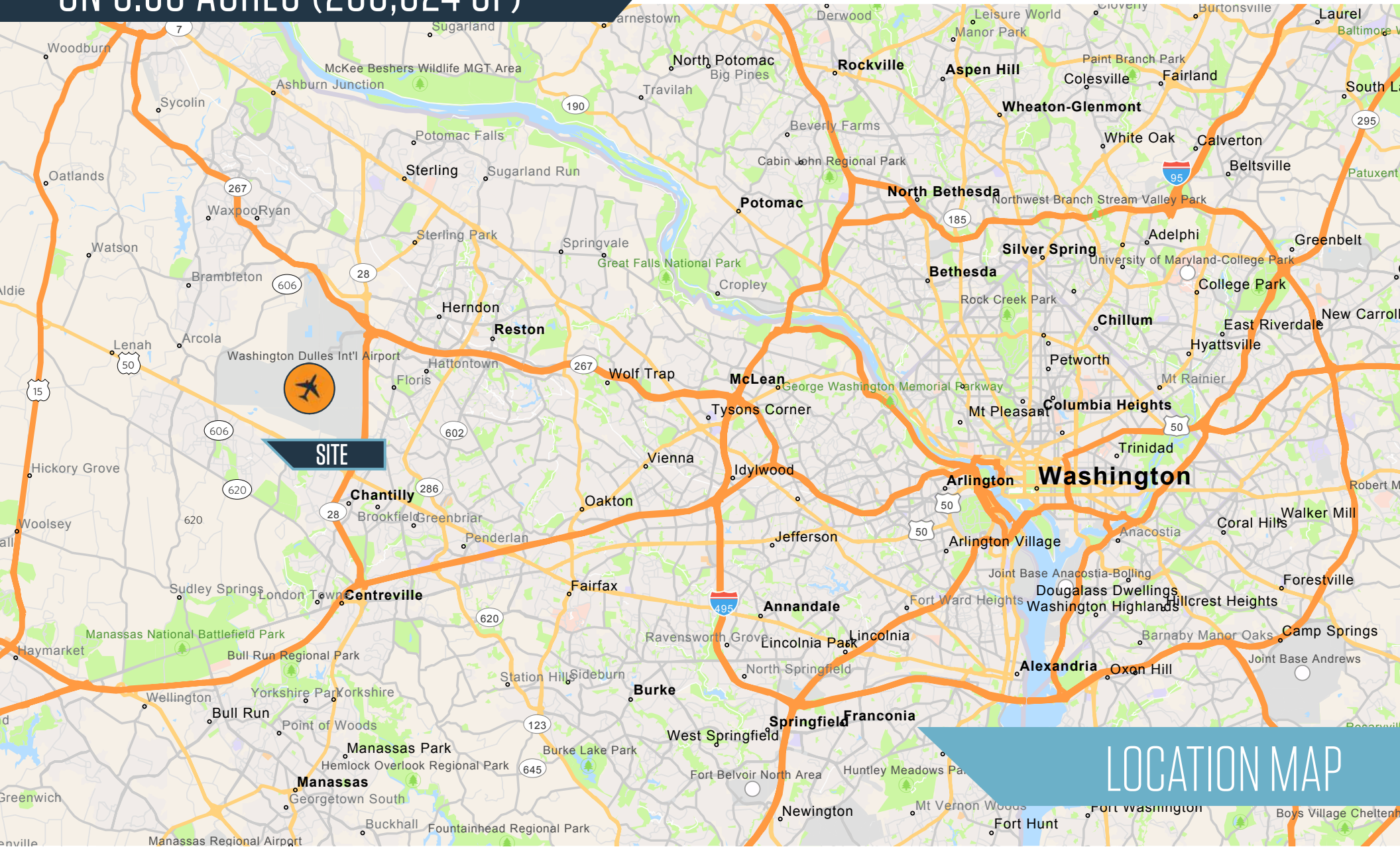
**Zubin David**  
zdavid@klnb.com  
301-821-5588

8065 Leesburg Pike, Suite 700  
Tysons, VA 22182  
klnb.com

**NAI**klnb

# RELIGIOUS / CHILDCARE BUILDING ON 6.58 ACRES (286,624 SF)

25350 Poland Road, Chantilly, VA 21052  
Loudoun County



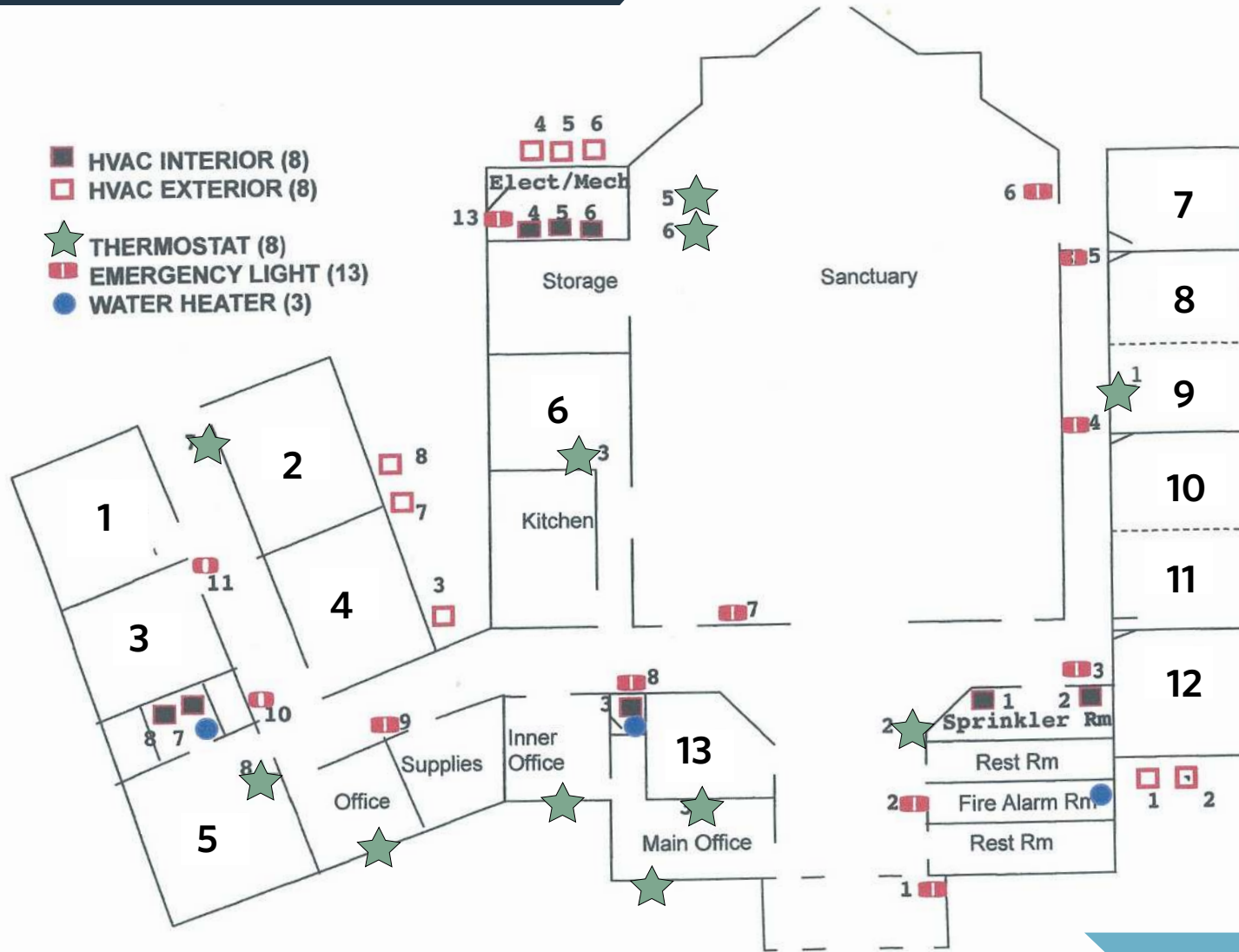
Zubin David  
zdavid@klnb.com  
301-821-5588

8065 Leesburg Pike, Suite 700  
Tysons, VA 22182  
klnb.com



# RELIGIOUS / CHILDCARE BUILDING ON 6.58 ACRES (286,624 SF)

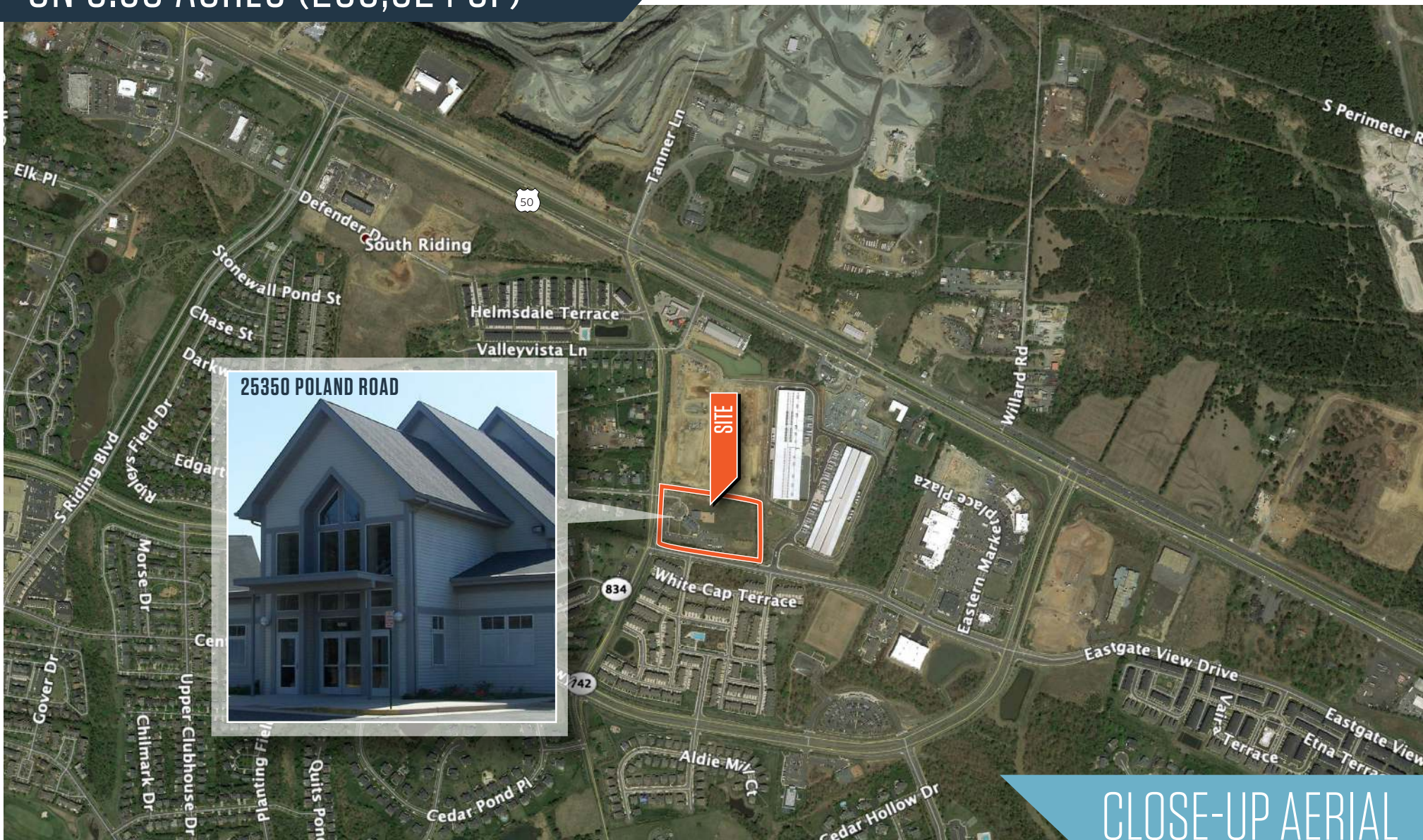
25350 Poland Road, Chantilly, VA 21052  
Loudoun County



FLOOR PLAN

# RELIGIOUS / CHILDCARE BUILDING ON 6.58 ACRES (286,624 SF)

25350 Poland Road, Chantilly, VA 21052  
Loudoun County



CLOSE-UP AERIAL

Zubin David  
zdavid@klnb.com  
301-821-5588

8065 Leesburg Pike, Suite 700  
Tysons, VA 22182  
klnb.com





# RELIGIOUS / CHILDCARE BUILDING ON 6.58 ACRES (286,624 SF)

25350 Poland Road, Chantilly, VA 21052  
Loudoun County

[CLICK TO VIEW PROPERTY WEBSITE](#)

For More Information, Please Contact:

**Zubin David**

[zdavid@klnb.com](mailto:zdavid@klnb.com)

301-821-5588

8065 Leesburg Pike, Suite 700  
Tysons, VA 22182

[klnb.com](http://klnb.com)



[instagram.com/klnbcre](https://www.instagram.com/klnbcre)



[linkedin.com/company/klnb](https://www.linkedin.com/company/klnb)



[facebook.com/KLNBCRE](https://www.facebook.com/KLNBCRE)

While we have no reason to doubt the accuracy of any of the information supplied, we cannot, and do not, guarantee its accuracy. All information should be independently verified prior to a purchase or lease of the property. We are not responsible for errors, omissions, misuse, or misinterpretation of information contained herein and make no warranty of any kind, express or implied, with respect to the property or any other matters.

**NAI** klnb