

# LONDONTOWNE SQUARE

1311 Londontowne Blvd, Eldersburg, MD 21014  
Carroll County



JOIN:

**SAFeway**  **FIVE GUYS**

**KOHL'S**  

**MARTIN'S** 

- FULLY LEASED
- Safeway anchored center located on Londontown Boulevard in Eldersburg, MD.
- Great visibility from Home Depot, Kohl's and Martin's Center.
- Pylon signage

**100%**  
*Leased!*

Amanda DeVinney  
adevinney@klnb.com  
443-632-2045

Michael Ginsburg  
mginsburg@klnb.com  
443-632-2041

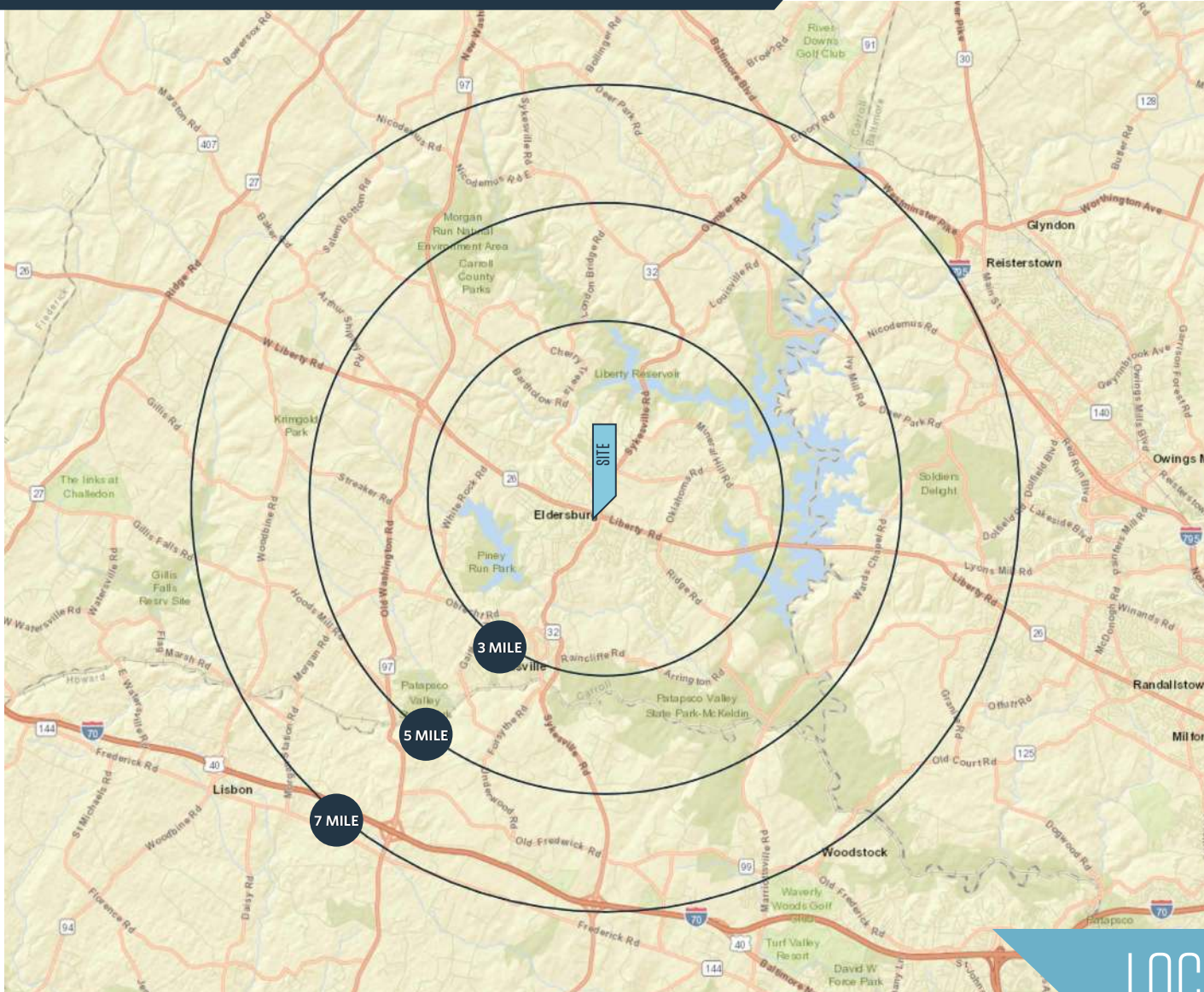
Brian Finkelstein  
bfinkelstein@klnb.com  
443-632-2076

100 West Road, Suite 505  
Towson, MD 21204  
**klnb.com**

**klnb**

# LONDONTOWNE SQUARE

1311 Londontowne Blvd, Eldersburg, MD 21014  
Carroll County



AVAILABLE SPACE  
FULLY LEASED

## DEMOGRAPHICS | 2023:

3-MILE	5-MILE	7-MILE
Population		
32,026	45,048	72,885
Daytime Population		
26,105	34,738	54,268
Households		
11,237	15,951	25,975
Average HH Income		
\$178,553	\$178,145	\$176,738

[CLICK TO DOWNLOAD DEMOGRAPHIC REPORT](#)

## TRAFFIC COUNTS | 2022:

Liberty Rd (Rt. 26)	30,293 ADT
Sykesville Rd (Rt. 32)	11,591 ADT

## LOCATION & DEMOGRAPHICS

**Amanda DeVinney**  
adevinney@klnb.com  
443-632-2045

**Michael Ginsburg**  
mginsburg@klnb.com  
443-632-2041

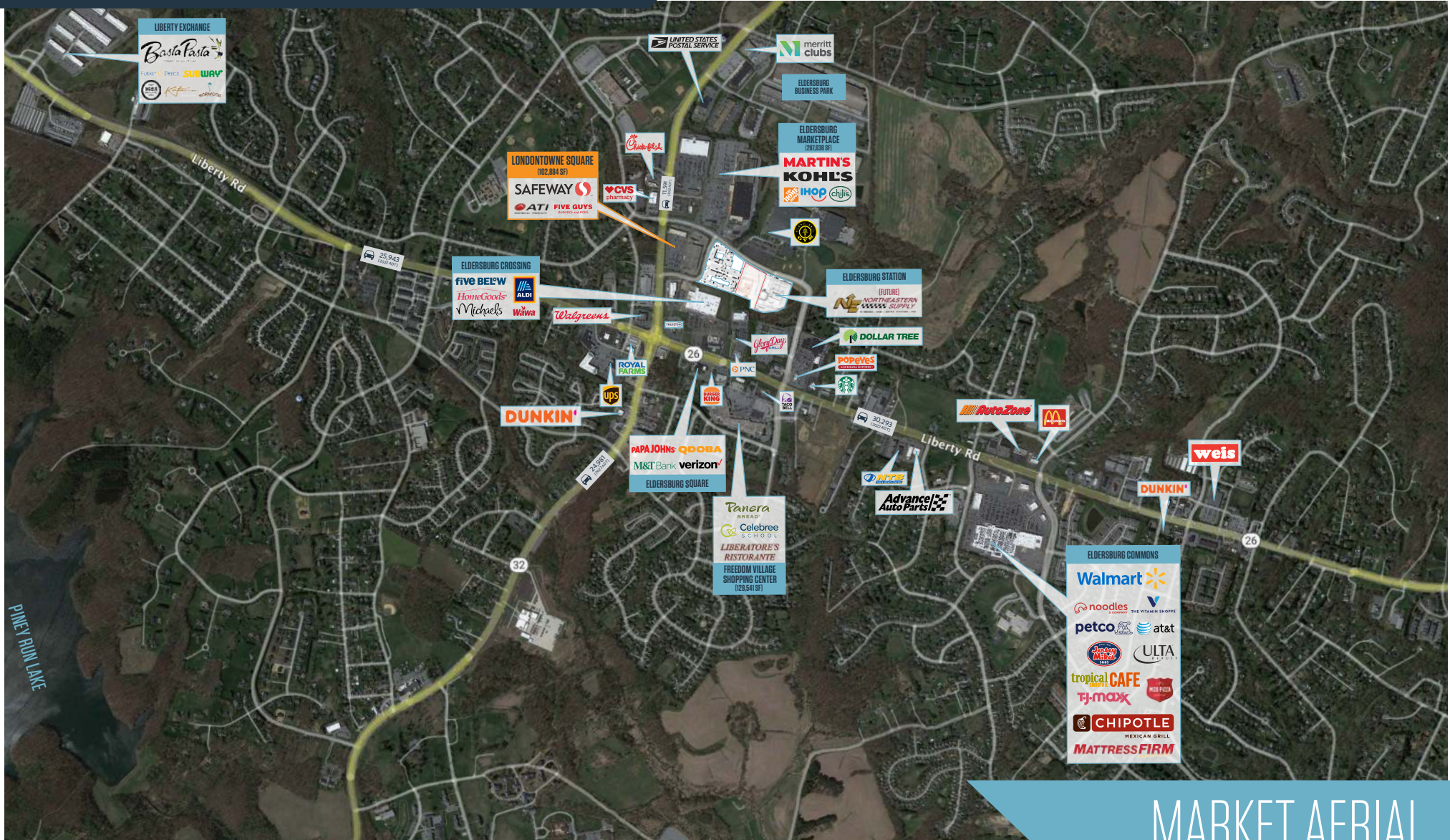
**Brian Finkelstein**  
bfinkelstein@klnb.com  
443-632-2076

100 West Road, Suite 505  
Towson, MD 21204  
**klnb.com**



# LONDONTOWNE SQUARE

1311 Londontowne Blvd, Eldersburg, MD 21014  
Carroll County



## MARKET AERIAL

Amanda DeVinney  
adevinney@klnb.com  
443-632-2045

Michael Ginsburg  
mginsburg@klnb.com  
443-632-2041

Brian Finkelstein  
bfinkelstein@klnb.com  
443-632-2076

100 West Road, Suite 505  
Towson, MD 21204  
klnb.com

klnb

# LONDONTOWNE SQUARE

1311 Londontowne Blvd, Eldersburg, MD 21014  
Carroll County



BIRDS EYE AERIAL

Amanda DeVinney  
adevinney@klnb.com  
443-632-2045

Michael Ginsburg  
mginsburg@klnb.com  
443-632-2041

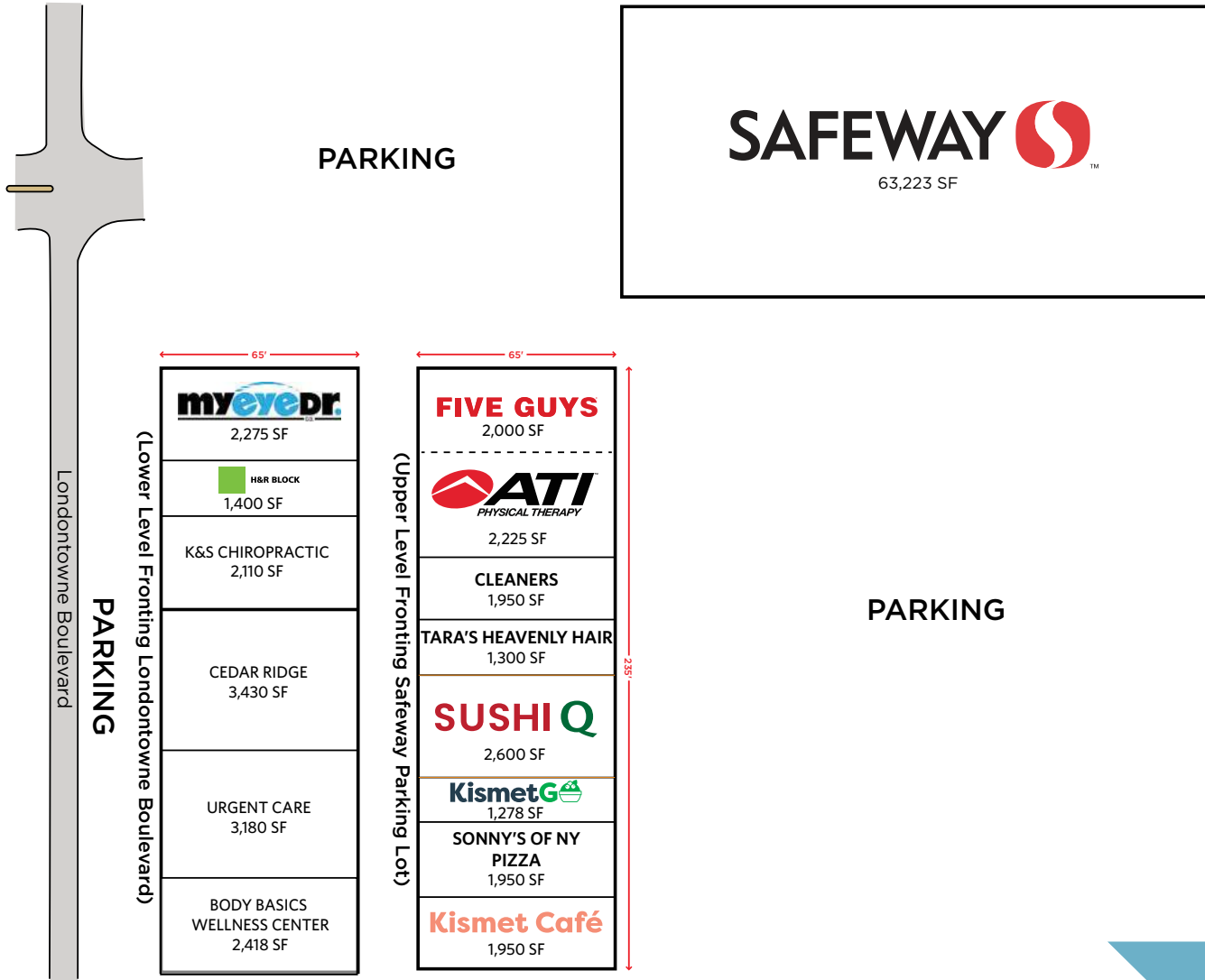
Brian Finkelstein  
bfinkelstein@klnb.com  
443-632-2076

100 West Road, Suite 505  
Towson, MD 21204  
klnb.com



# LONDONTOWNE SQUARE

1311 Londontowne Blvd, Eldersburg, MD 21014  
Carroll County



## SITE PLAN

Amanda DeVinney  
adevinney@klnb.com  
443-632-2045

Michael Ginsburg  
mginsburg@klnb.com  
443-632-2041

Brian Finkelstein  
bfinkelstein@klnb.com  
443-632-2076

100 West Road, Suite 505  
Towson, MD 21204  
klnb.com



# LONDONTOWNE SQUARE

1311 Londontowne Blvd, Eldersburg, MD 21014  
Carroll County



PHOTOS

**Amanda DeVinney**  
adevinney@klnb.com  
443-632-2045

**Michael Ginsburg**  
mginsburg@klnb.com  
443-632-2041

**Brian Finkelstein**  
bfinkelstein@klnb.com  
443-632-2076

100 West Road, Suite 505  
Towson, MD 21204  
**klnb.com**

**klnb**

# LONDONTOWNE SQUARE

1311 Londontowne Blvd, Eldersburg, MD 21014  
Carroll County

[CLICK TO VIEW PROPERTY WEBSITE](#)

For More Information, Please Contact:

**Amanda DeVinney**

adevinney@klnb.com  
443-632-2045

**Michael Ginsburg**

mginsburg@klnb.com  
443-632-2041

**Brian Finkelstein**

bfinkelstein@klnb.com  
443-632-2076

100 West Road, Suite 505  
Towson, MD 21204

[klnb.com](http://klnb.com)



[instagram.com/klnbcre](https://www.instagram.com/klnbcre)



[linkedin.com/company/klnb](https://www.linkedin.com/company/klnb)



[facebook.com/KLNBCRE](https://www.facebook.com/KLNBCRE)

While we have no reason to doubt the accuracy of any of the information supplied, we cannot, and do not, guarantee its accuracy. All information should be independently verified prior to a purchase or lease of the property. We are not responsible for errors, omissions, misuse, or misinterpretation of information contained herein and make no warranty of any kind, express or implied, with respect to the property or any other matters.

**klnb**