



THE SERVICE CENTER

2507 N Howard Street, Baltimore, MD 21218



RETAIL FOR LEASE

AMANDA DEVINNEY
adevinney@klnb.com
443-632-2045

MICHAEL GINSBURG
mginsburg@klnb.com
443-632-2041

MATT COPELAND
mcopeland@klnb.com
443-632-2051

BRIAN FINKELSTEIN
bfinkelstein@klnb.com
443-632-2076

klnb.com

Center 3.0\CAD\Plot-C-200 Site Plan 22-12.dwg; Saved By: Robert Haase on 11/14/2022 2:41 PM

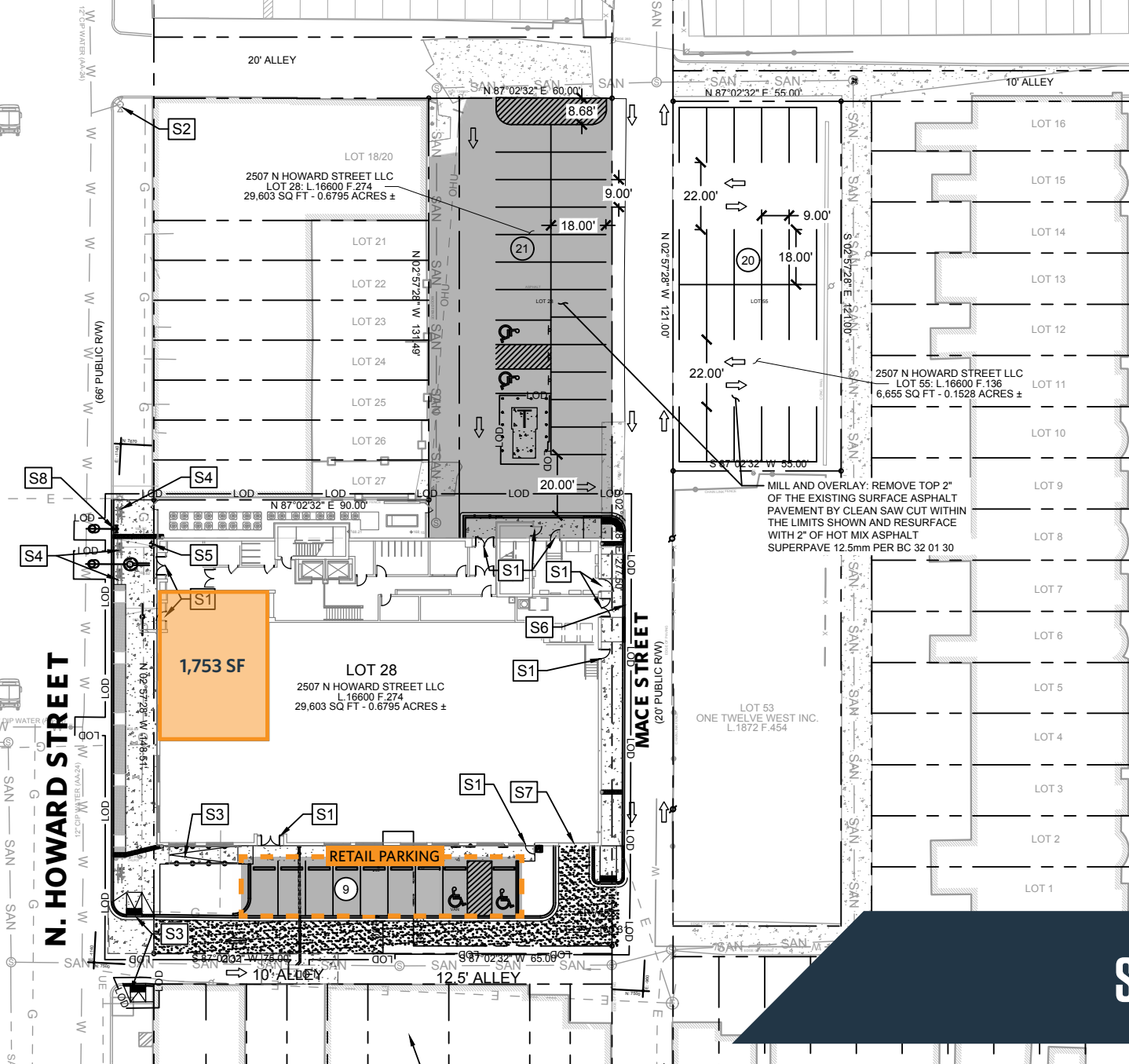
BUS STOP (#21, 94 SB) TRV#51 ELEV=162.99

BUS STOP (#21, 94 SB)

N. HOWARD STREET

MACE STREET (20' PUBLIC R/W)

MARYLAND AVENUE (66' PUBLIC R/W)



SITE PLAN

THE SERVICE CENTER

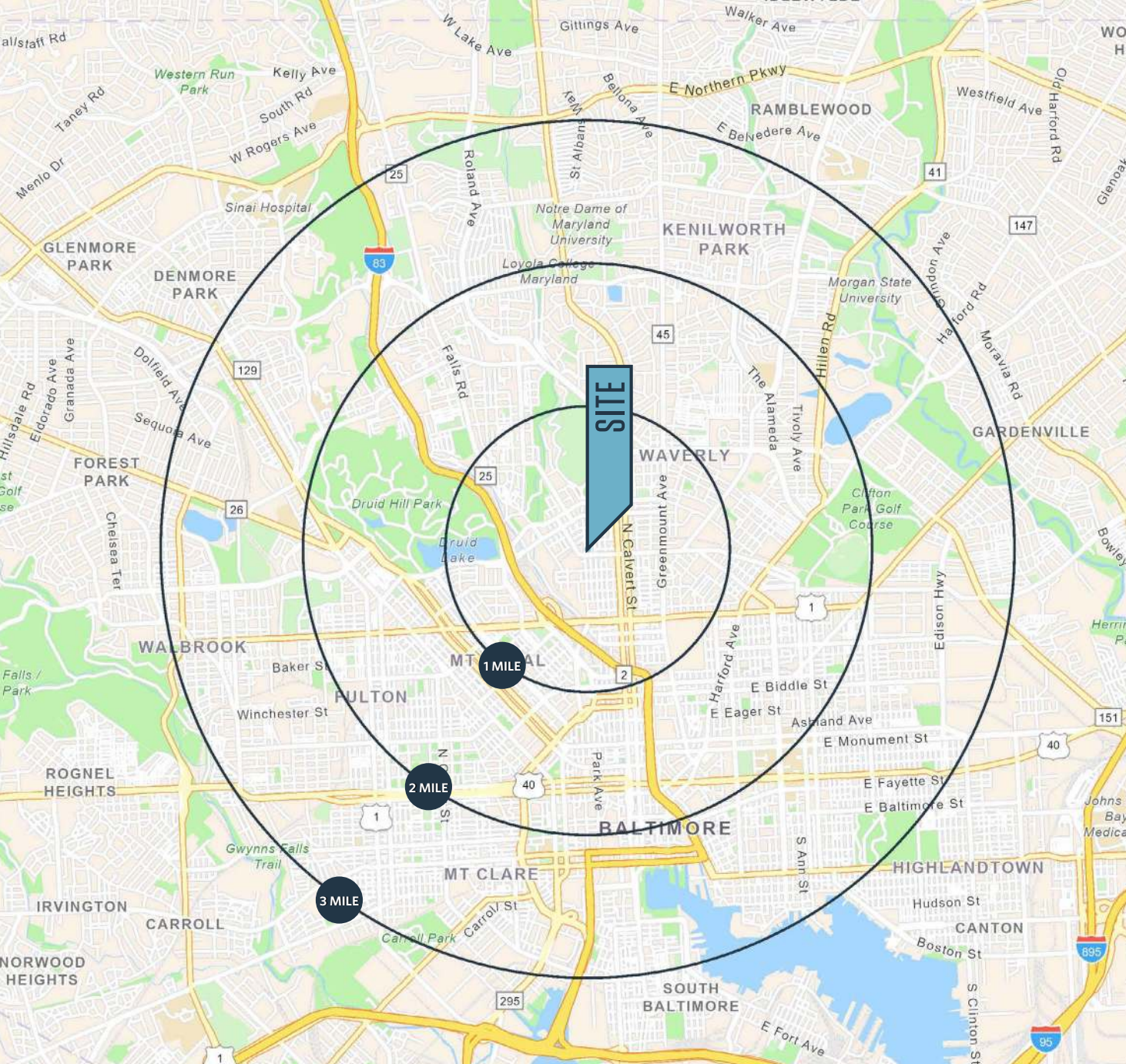
AMANDA DEVINNEY
adevinney@klnb.com
443-632-2045

MICHAEL GINSBURG
mginsburg@klnb.com
443-632-2041

MATT COPELAND
mcopeland@klnb.com
443-632-2051

BRIAN FINKELSTEIN
bfinkelstein@klnb.com
443-632-2076





PROPERTY HIGHLIGHTS

RETAIL SPACE FOR LEASE:

- 1,753 SF Available
- New construction delivering March 2024
- Surface parking available
- Join the rapidly growing Remington Neighborhood

DEMOGRAPHICS

1 mile	2 miles	3 miles
38,919	138,699	280,776
POPULATION		
44,579	194,907	389,279
DAYTIME POPULATION		
18,465	64,383	125,740
HOUSEHOLDS		
\$87,705	\$78,707	\$85,461
AVERAGE HH INCOME		

TRAFFIC

Riverside Pkwy (MD-543)	22,862 AADT
I-95	103,221 AADT

JOIN

SAFeway 



THE SERVICE CENTER

AMANDA DEVINNEY
adevinney@klnb.com
443-632-2045

MICHAEL GINSBURG
mginsburg@klnb.com
443-632-2041

MATT COPELAND
mcopeiland@klnb.com
443-632-2051

BRIAN FINKELSTEIN
bfinkelstein@klnb.com
443-632-2076

klnb



THE SERVICE CENTER

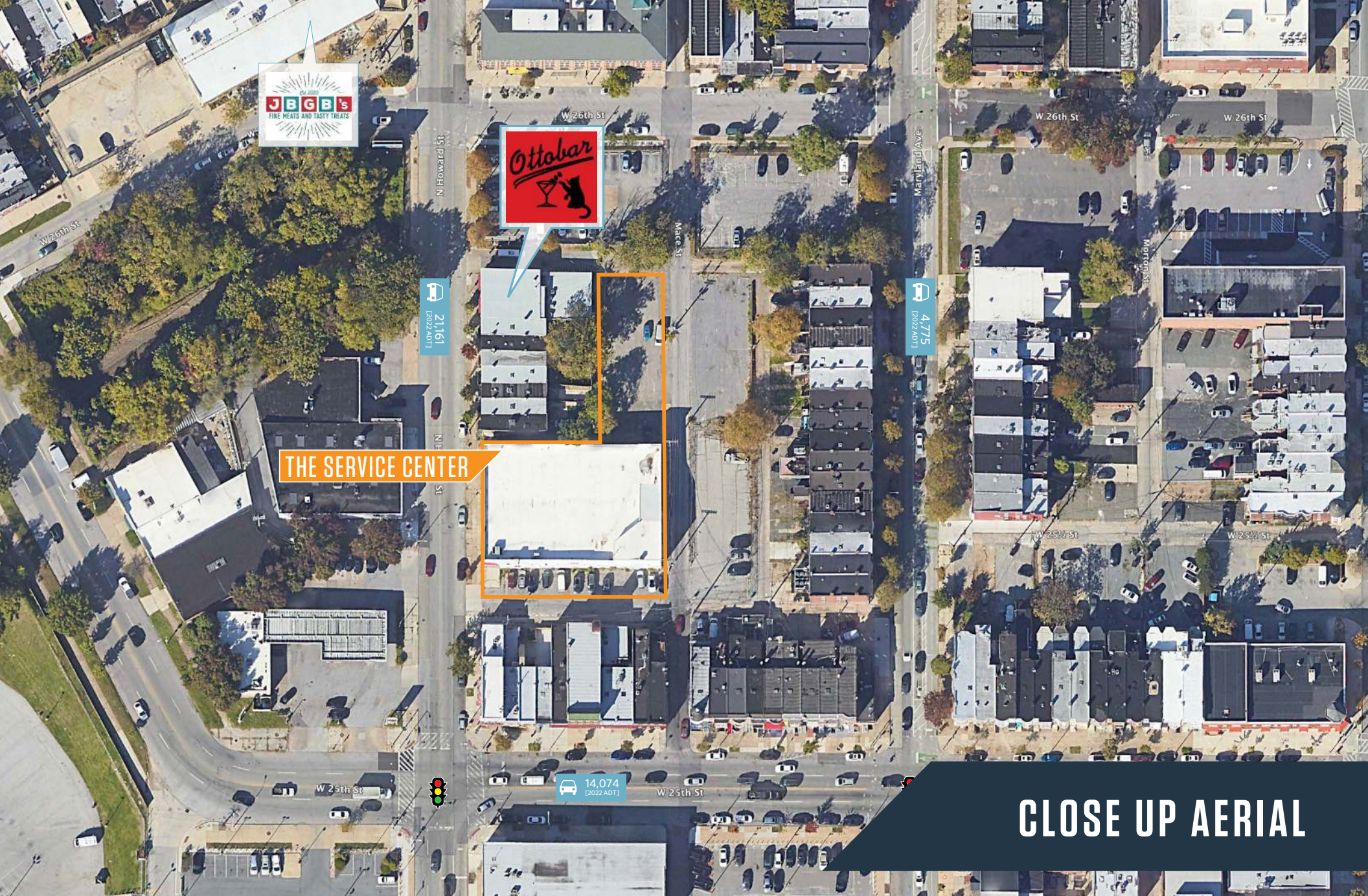
AMANDA DEVINNEY
 adevinney@klnb.com
 443-632-2045

MICHAEL GINSBURG
 mginsburg@klnb.com
 443-632-2041

MATT COPELAND
 mcopeland@klnb.com
 443-632-2051

BRIAN FINKELSTEIN
 bfinkelstein@klnb.com
 443-632-2076

klnb



THE SERVICE CENTER



21,161
[2022 ADT]

4,775
[2022 ADT]

14,074
[2022 ADT]

CLOSE UP AERIAL

THE SERVICE CENTER

AMANDA DEVINNEY
adevinney@klnb.com
443-632-2045

MICHAEL GINSBURG
mginsburg@klnb.com
443-632-2041

MATT COPELAND
mcopeiland@klnb.com
443-632-2051

BRIAN FINKELSTEIN
bfinkelstein@klnb.com
443-632-2076





THE SERVICE CENTER
2507 N Howard Street, Baltimore, MD 21218

CONTACT

AMANDA DEVINNEY
adevinney@klnb.com
443-632-2045

MICHAEL GINSBURG
mginsburg@klnb.com
443-632-2041

MATT COPELAND
mcpeland@klnb.com
443-632-2051

BRIAN FINKELSTEIN
bfinkelstein@klnb.com
443-632-2076

100 West Road, Suite 505
Towson, MD 21204

klnb.com

VISIT PROPERTY WEBSITE



While we have no reason to doubt the accuracy of any of the information supplied, we cannot, and do not, guarantee its accuracy. All information should be independently verified prior to a purchase or lease of the property. We are not responsible for errors, omissions, misuse, or misinterpretation of information contained herein and make no warranty of any kind, express or implied, with respect to the property or any other matters.