



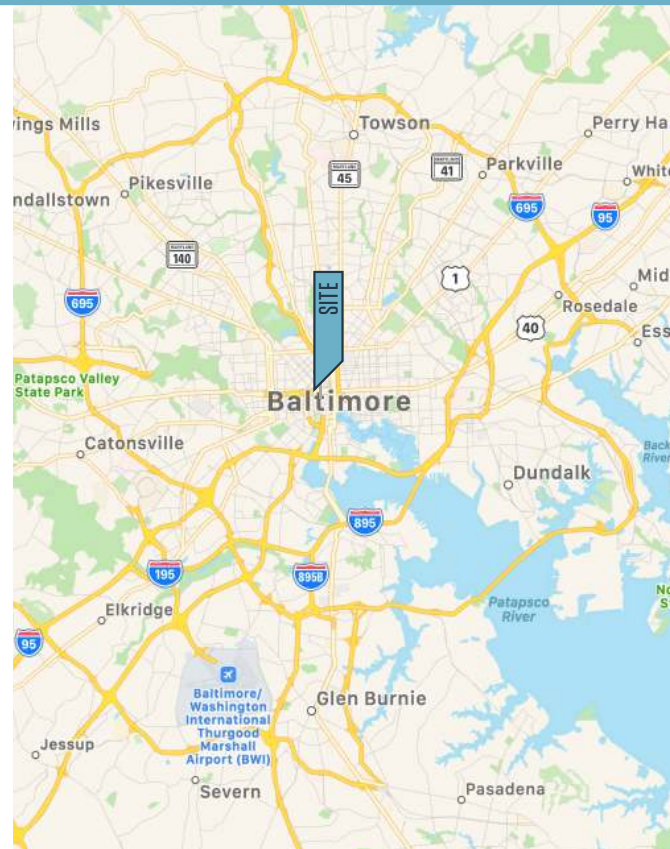
ONE MARKET CENTER FOR LEASE

Suite Highlights

- **5,000 - 60,000 square feet of office space which includes 1 GB of AiNET internet connectivity**
- **1st Floor:** \$20.00 PSF, + utilities and cleaning
 - **3,055 SF:** Lobby & exterior entrance
 - **3,347 SF:** Eutaw Street exterior entrance
 - **7,500 SF:** Howard Street exterior entrance
 - **9,200 SF:** Howard Street exterior entrance
- **Floors 2 - 5:** 42,000 SF of space; \$15.50 PSF; Full Service
- **Walkability Score:** 97
- **Transit Score:** 91

Building Highlights

- Across the street from the historical world famous Lexington Market - adjacent to Metro & Light Rail Stop
- Close proximity to University of MD, Medical Campus
- City hub of fiber connectivity
- 20 megawatts of power
- Multiple fiber providers in the building



300 W. LEXINGTON STREET

Baltimore, MD 21201 | Baltimore City

AERIAL VIEW



PHOTOS

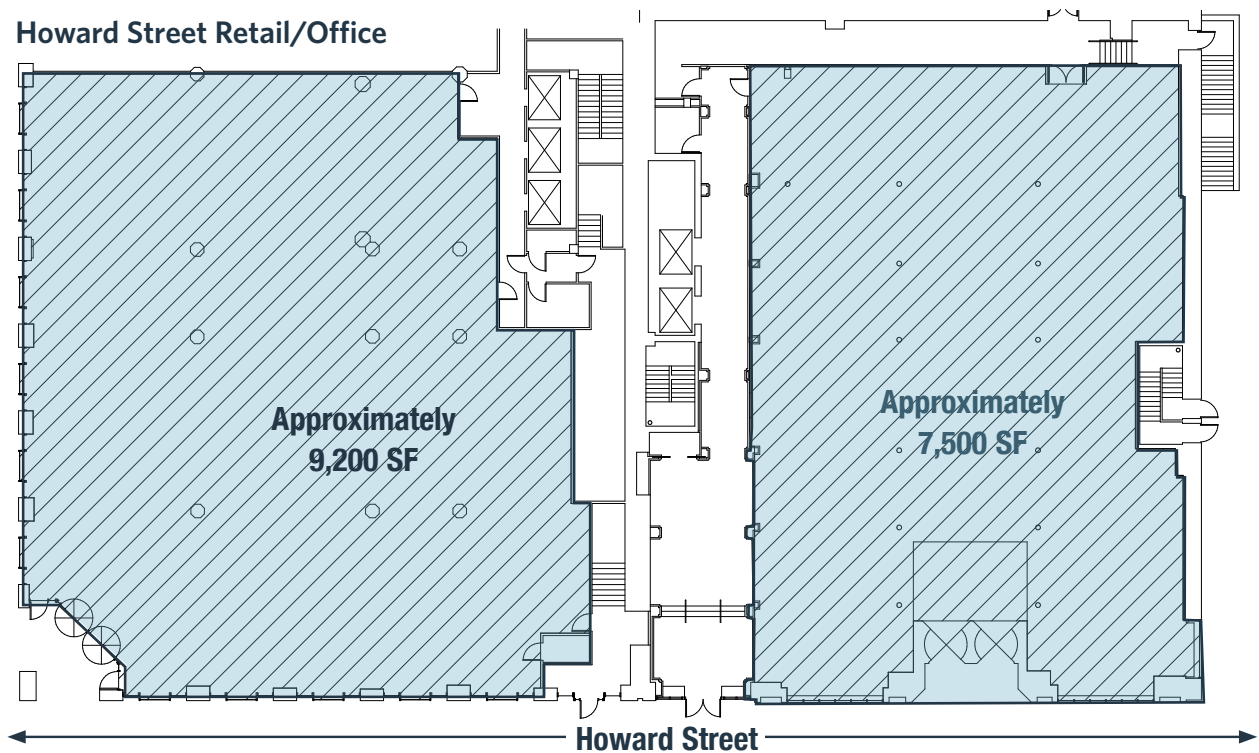


Chuck Breitenother
cbreitenother@klnb.com
443-574-1422

Joe Nolan, SIOR
jnolan@klnb.com
443-632-2065

9881 Broken Lane Pkwy, #300
Columbia, MD 21046
klnb.com

FLOOR PLAN



BUILDING DESCRIPTION

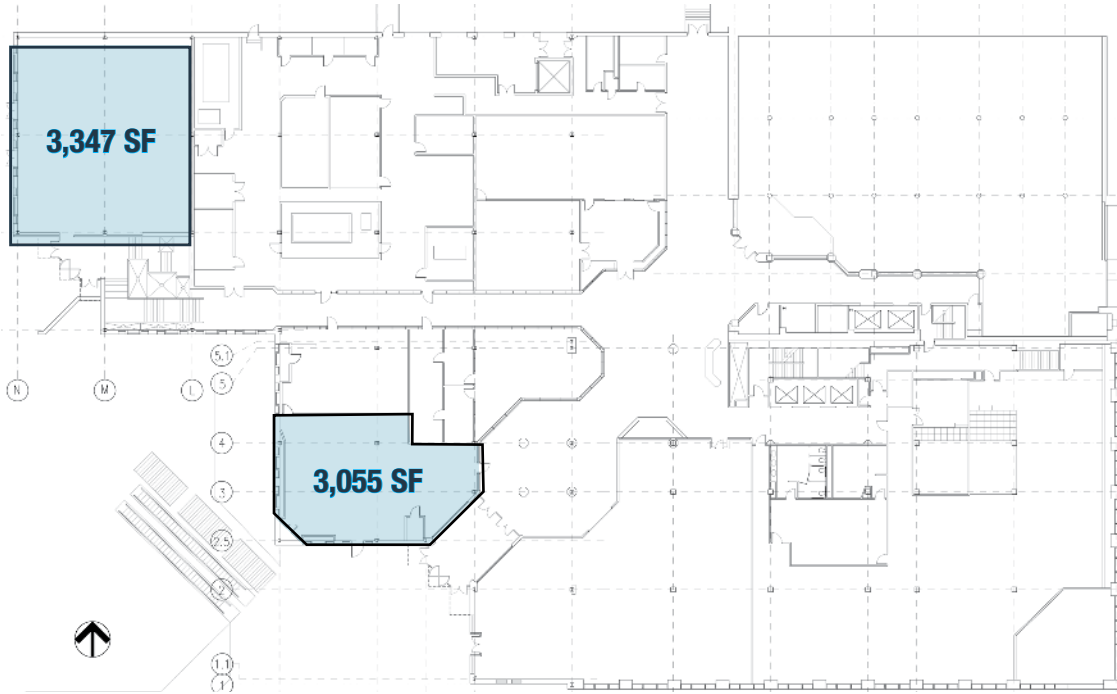
Number of Stories:	Tower: 7 stories - 151,206 Sq. Ft. Palace: 5 stories - 51,507 Sq. Ft.
Site Size:	1.5 acres
Parking:	None - city garage across the street
Management:	On-site property management
Loading:	3 dock high doors
Security:	24/7 guard in main lobby
Elevators:	Tower: 3 Palace: 3
Sprinklers:	Throughout building

300 W. LEXINGTON STREET

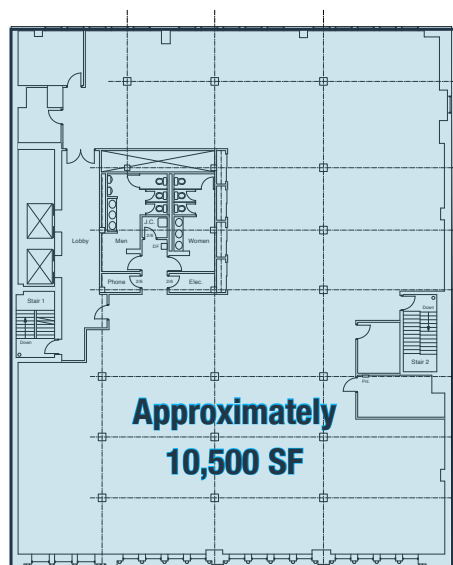
Baltimore, MD 21201 | Baltimore City



1ST FLOOR PLAN | EUTAW/W. LEXINGTON STREET RETAIL / OFFICE



TYPICAL 2ND - 5TH FLOOR OFFICE SPACE



Chuck Breitenother
cbreitenother@klnb.com
443-574-1422

Joe Nolan, SIOR
jnolan@klnb.com
443-632-2065

9881 Broken Lane Pkwy, #300
Columbia, MD 21046
klnb.com