



JOIN: ROYAL FARMS



NEARBY RETAILERS:



NEW RETAIL DEVELOPMENT

- Pad sites available half a mile from new grocery-anchored development in Frederick, MD.
- Excellent visibility and access from I-70.
- Access via a traffic light on Monocacy Blvd & access on Patrick Street.
- Future Tru by Hilton hotel.

AMANDA DEVINNEY

adevinney@klnb.com | 443-632-2045

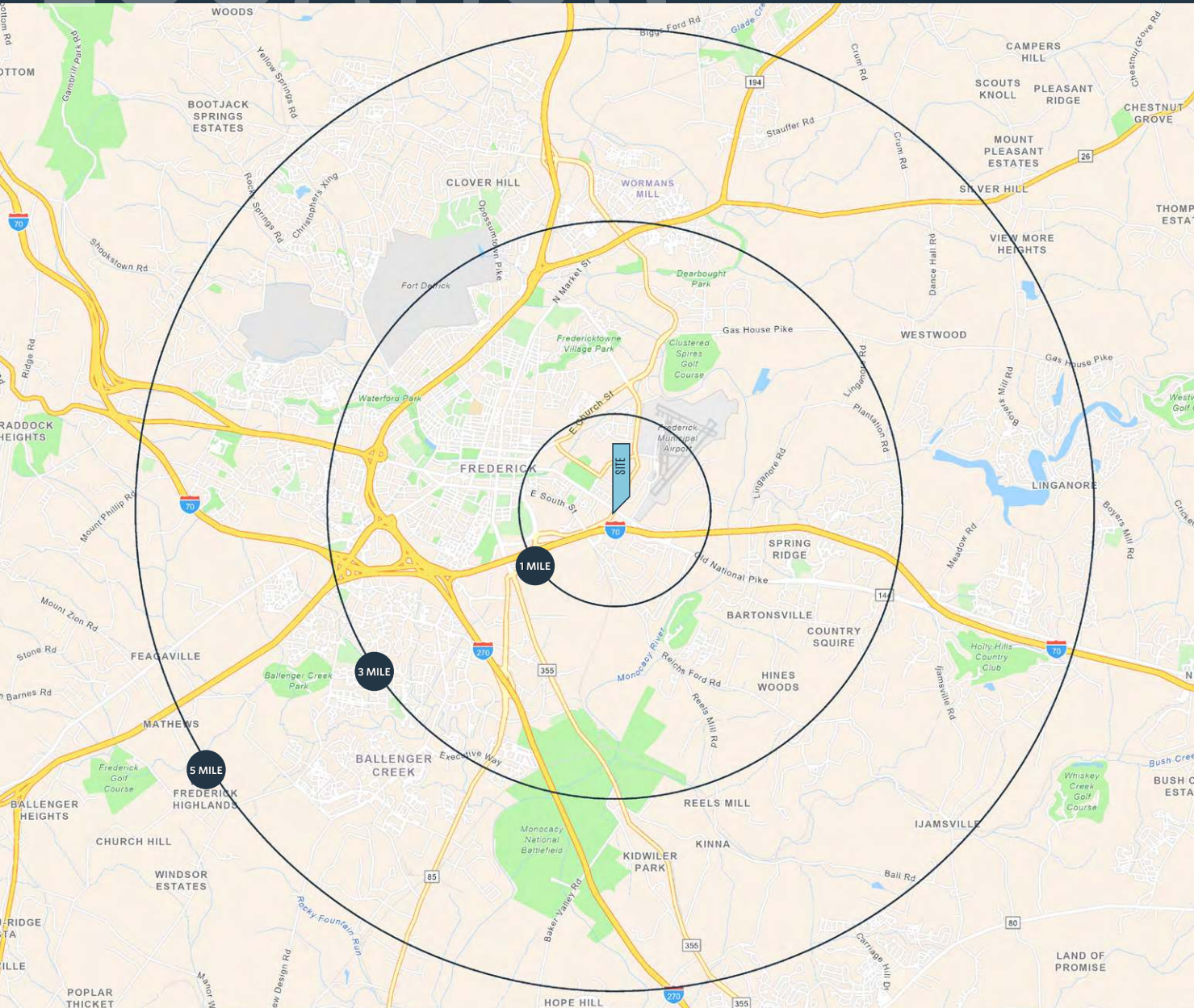
RYAN MINNEHAN

rminnehan@klnb.com | 443-632-2088

LOCATION

GATEWAY EAST PLAZA

FREDERICK, MD 21701, FREDERICK COUNTY



DEMOGRAPHICS | 2023:

	1-MILE	3-MILE	5-MILE
Population	1,790	57,646	141,422
Daytime Population	8,029	93,034	154,950
Households	774	23,545	53,373
Average HH Income	\$84,452	\$115,584	\$127,178

[CLICK TO DOWNLOAD DEMOGRAPHIC REPORT](#)

TRAFFIC COUNTS | 2022:

E. Patrick St.	8,831 ADT
Monocacy Blvd.	15,775 ADT
I-70	71,113 ADT

AMANDA DEVINNEY

adevinney@klnb.com | 443-632-2045

RYAN MINNEHAN

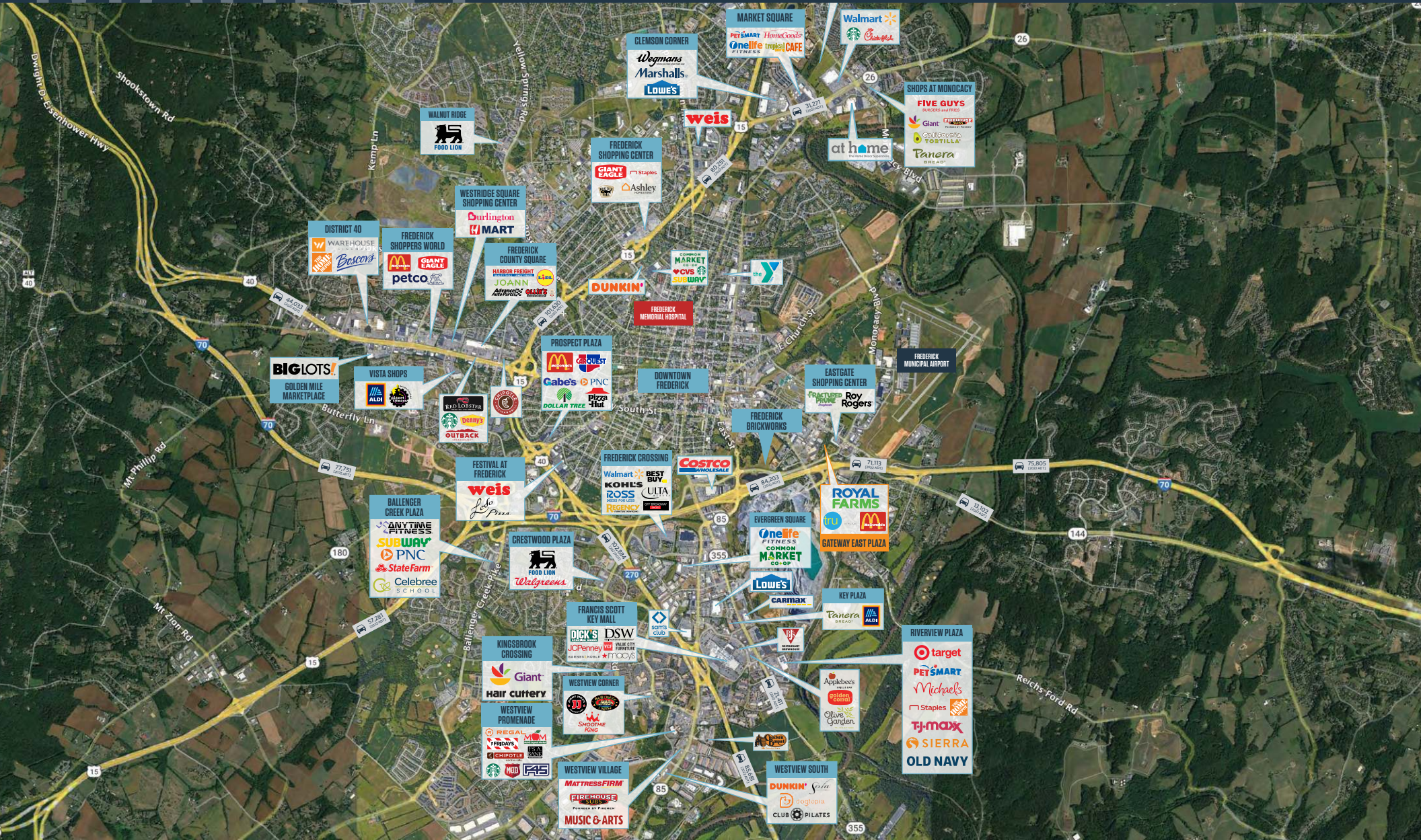
rminnehan@klnb.com | 443-632-2088



MARKET

GATEWAY EAST PLAZA

FREDERICK, MD 21701, FREDERICK COUNTY



AMANDA DEVINNEY

adevinney@klnb.com | 443-632-2045

RYAN MINNEHAN

rminnehan@klnb.com | 443-632-2088



GATEWAY EAST PLAZA

FREDERICK, MD 21701, FREDERICK COUNTY



FREDERICK BRICKWORKS

- 64 ACRE DEVELOPMENT
- 130,000 SF OF COMMERCIAL SPACE
- 150 ROOM HOTEL
- 900 MULTIFAMILY HOMES
- 360 SINGLE FAMILY HOMES



CLOSE-UP

GATEWAY EAST PLAZA

FREDERICK, MD 21701, FREDERICK COUNTY

PAD SITES AVAILABLE

- A** ±14,400 SF Convenience/Pharmacy
- B** ±5,000 SF Sit Down Restaurant
- C** ±4,000 SF Drive-Thru Bank
- D** ±5,500 SF Restaurant w/Drive-Thru
- E** ±1,800 SF Restaurant



AMANDA DEVINNEY

adevinney@klnb.com | 443-632-2045

RYAN MINNEHAN

rminnehan@klnb.com | 443-632-2088

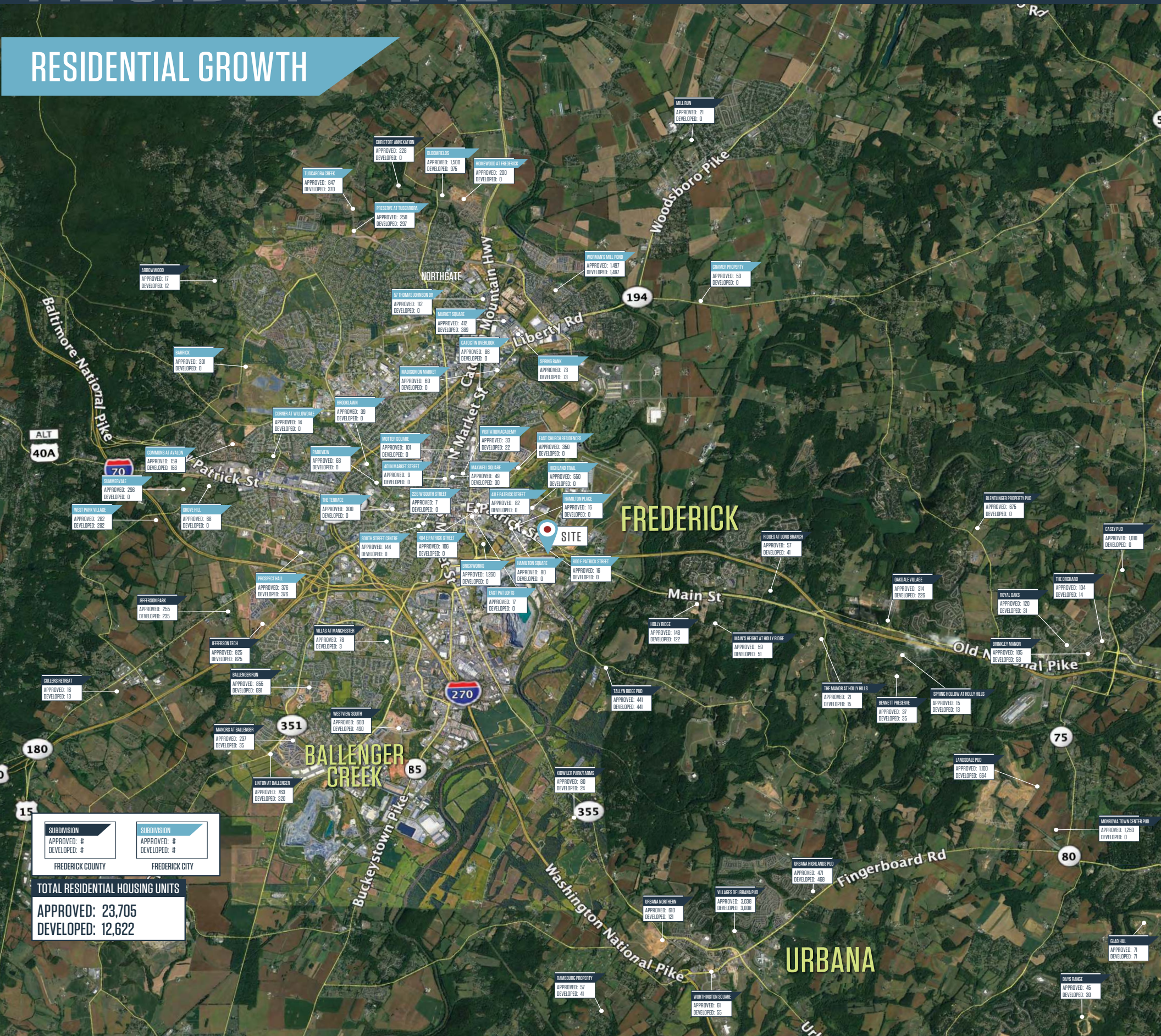


RESIDENTIAL

GATEWAY EAST PLAZA

FREDERICK, MD 21701, FREDERICK COUNTY

RESIDENTIAL GROWTH



AMANDA DEVINNEY
adevinney@klnb.com | 443-632-2045

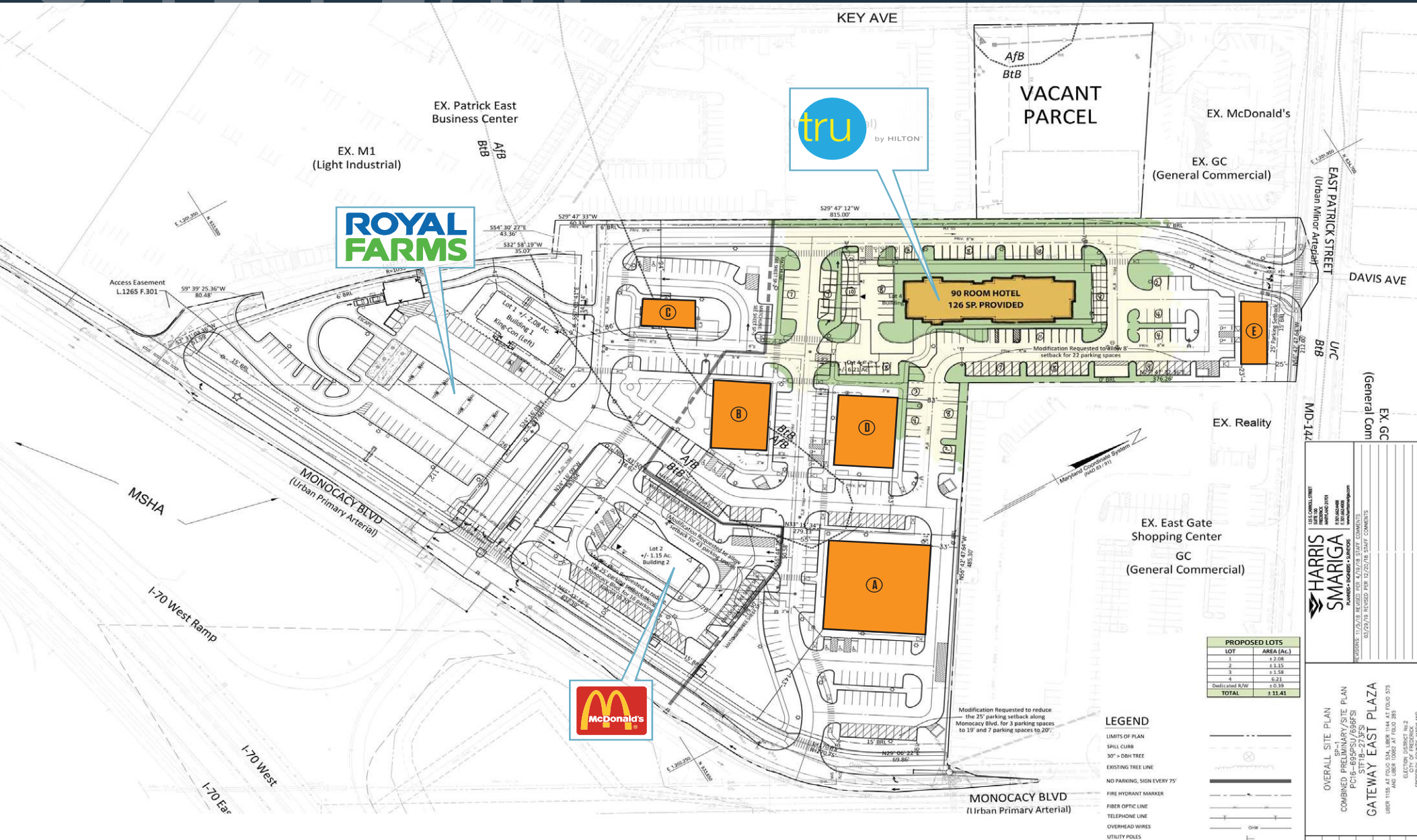
RYAN MINNEHAN
rminnehan@klnb.com | 443-632-2088



SITE PLAN

GATEWAY EAST PLAZA

FREDERICK, MD 21701, FREDERICK COUNTY



AMANDA DEVINNEY

adevinney@klnb.com | 443-632-2045

RYAN MINNEHAN

rminnehan@klnb.com | 443-632-2088



OVERALL SITE PLAN
COMBINED PRELIMINARY/SITE PLAN
PC16-695FSU/666FSI
S1F18-273FSI
GATEWAY EAST PLAZA
USER: 1156 AT FOLD 15A, 1889 1144 AT FOLD 17B
ELECTRIC DISTRICT No. 2
AND USER TOOLS AT FOLD 285
FREDERICK COUNTY, MARYLAND

HARRIS SMARRIGA
PLANNING ARCHITECTURE ENGINEERING

17/25/18 REVISION FOR 2/17/18 STAFF COMMENTS
03/25/18 REVISION FOR 12/25/18 STAFF COMMENTS

RENDERING

GATEWAY EAST PLAZA

FREDERICK, MD 21701, FREDERICK COUNTY



AMANDA DEVINNEY

adevinney@klnb.com | 443-632-2045

RYAN MINNEHAN

rminnehan@klnb.com | 443-632-2088

klnb

RENDERING

GATEWAY EAST PLAZA

FREDERICK, MD 21701, FREDERICK COUNTY



AMANDA DEVINNEY

adevinney@klnb.com | 443-632-2045

RYAN MINNEHAN

rminnehan@klnb.com | 443-632-2088

klnb



GATEWAY EAST PLAZA

FREDERICK, MD 21701, FREDERICK COUNTY

FOR MORE INFORMATION, PLEASE CONTACT:

AMANDA DEVINNEY

adevinney@klnb.com

443-632-2045

RYAN MINNEHAN

rminnehan@klnb.com

443-632-2088

100 West Road, Suite 505, Towson, MD 21204

klnb.com



[instagram.com/klnbcre](https://www.instagram.com/klnbcre)



[linkedin.com/company/klnb](https://www.linkedin.com/company/klnb)



[facebook.com/KLNBCRE](https://www.facebook.com/KLNBCRE)

CLICK TO VIEW PROPERTY WEBSITE

While we have no reason to doubt the accuracy of any of the information supplied, we cannot, and do not, guarantee its accuracy. All information should be independently verified prior to a purchase or lease of the property. We are not responsible for errors, omissions, misuse, or misinterpretation of information contained herein and make no warranty of any kind, express or implied, with respect to the property or any other matters.