

HAMPTON COMMERCE CENTER

9223- 9225 Hampton Overlook
Capitol Heights, MD 20743, Prince George's County

3 Oversized Drive-Ins



OFFICE/WAREHOUSE FOR LEASE

PROPERTY FEATURES

- **Project:** Hampton Commerce Center 1 & 2
- **Total Size & Ceiling Height:**
 - » Building 1: 45,000 SF; 18' clear
 - » Building 2: 28,830 SF; 16' clear
- **Zoning:** I-E (Industrial, Employment)
- **Parking Ratio:** 2.6 per 1,000 square feet

CURRENT SPACE AVAILABILITY

- **9223 - 9225 Hampton Overlook: 5,469 SF**
 - » **Available Immediately**
 - » Approximately 30% office; 70% warehouse
 - » Three (3) oversized drive-ins

OWNED & MANAGED BY:



Spence Daw
sdaw@klnb.com
443-574-1429

Aaron Carroll
acarroll@klnb.com
202-652-2333

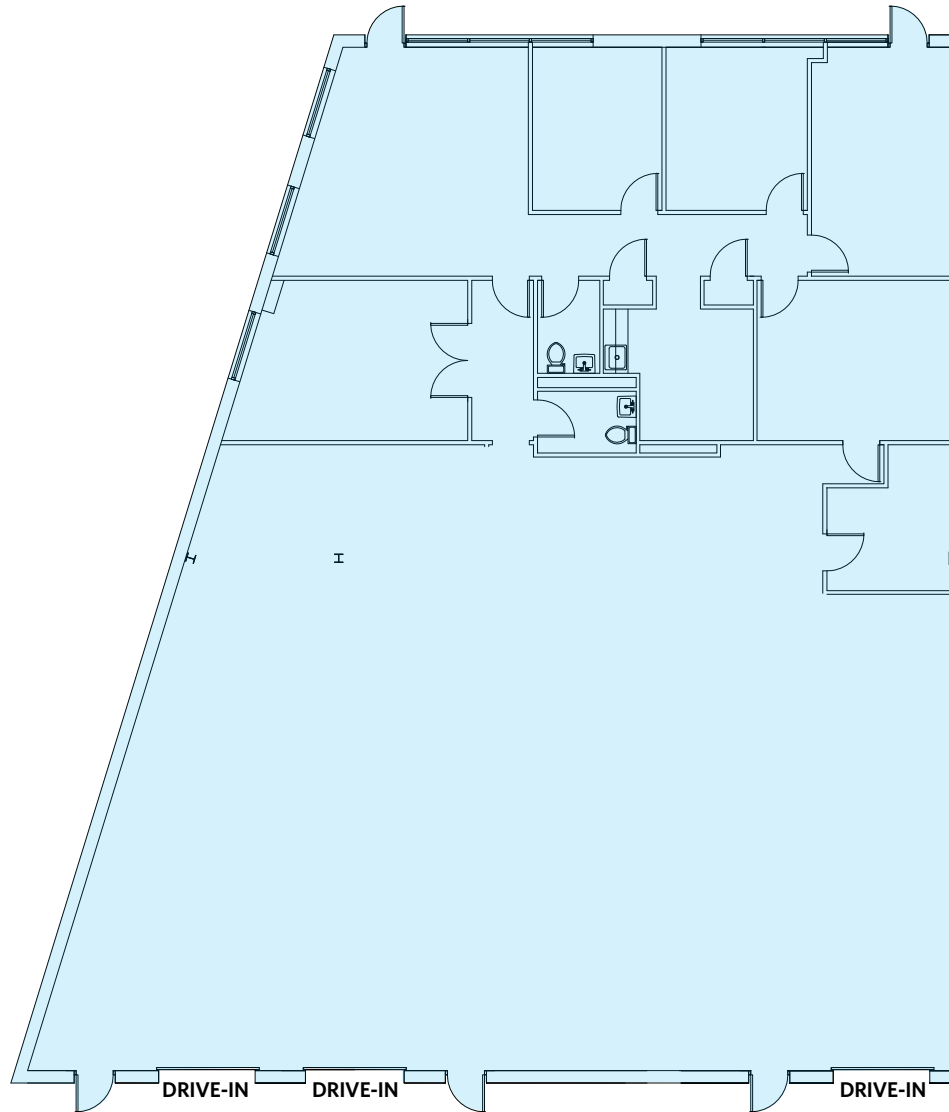
9881 Broken Land Pkwy, #300
Columbia, MD 21046
klnb.com

NAIklnb

HAMPTON COMMERCE CENTER

9223 - 9225 Hampton Overlook
Capitol Heights, MD 20743, Prince George's County

9223 - 9225
5,469 SF



OWNED & MANAGED BY:



FLOOR PLAN

Spence Daw
sdaw@klnb.com
443-574-1429

Aaron Carroll
acarroll@klnb.com
202-652-2333

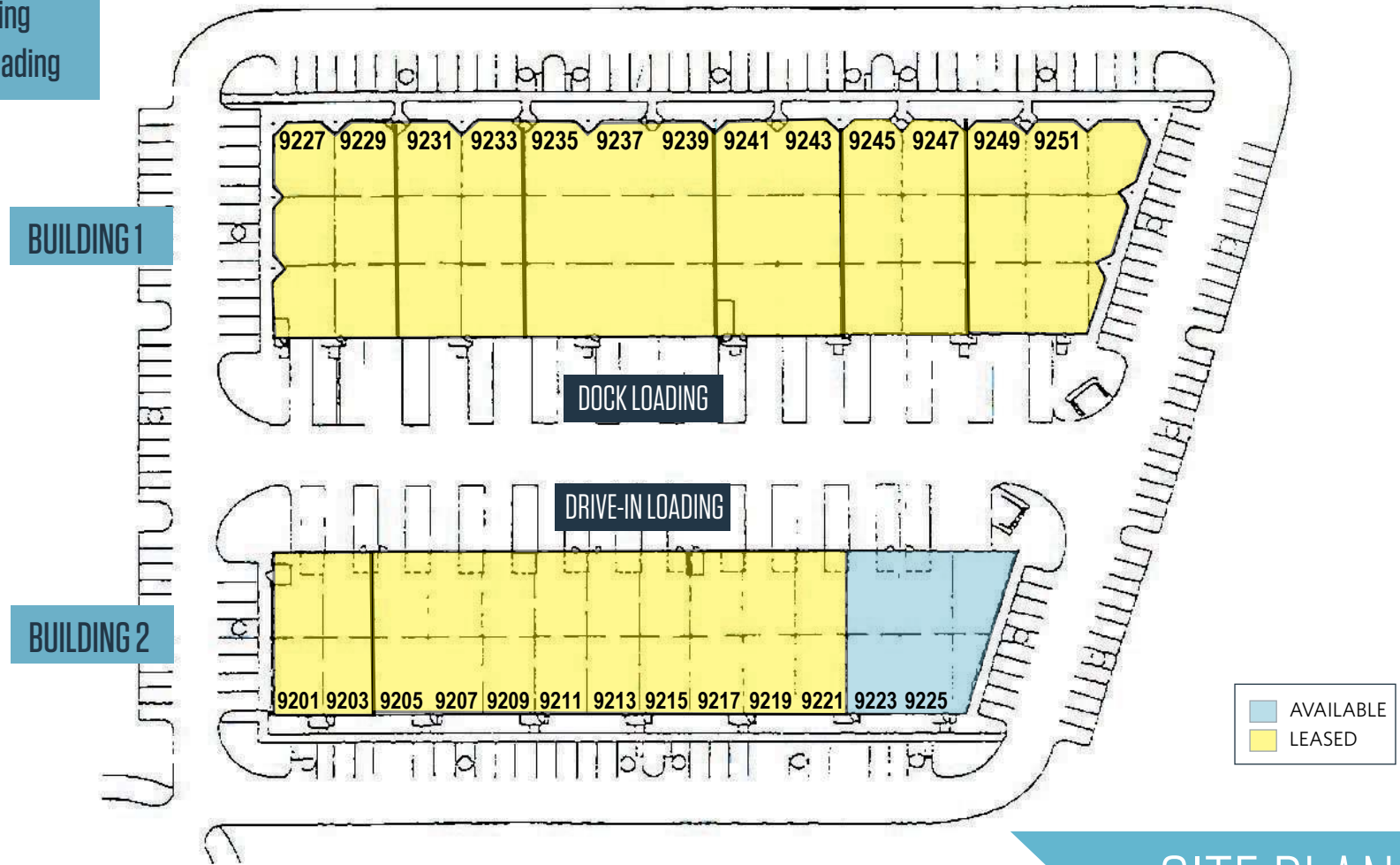
9881 Broken Land Pkwy, #300
Columbia, MD 21046
klnb.com



HAMPTON COMMERCE CENTER

9223 - 9225 Hampton Overlook
Capitol Heights, MD 20743, Prince George's County

BUILDING 1: Dock Loading
BUILDING 2: Drive-In Loading



OWNED & MANAGED BY:



SITE PLAN

Spence Daw
sdaw@klnb.com
443-574-1429

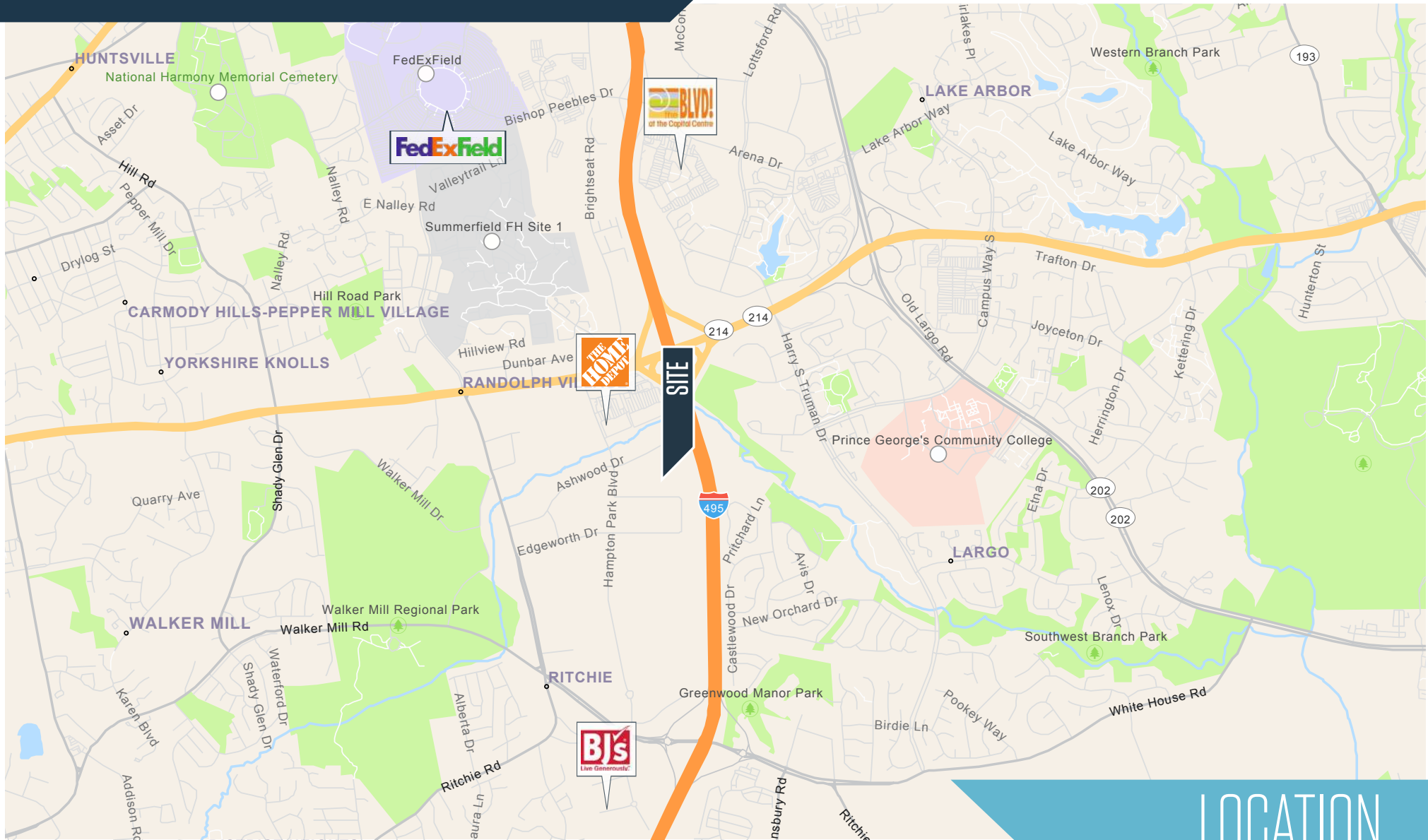
Aaron Carroll
acarroll@klnb.com
202-652-2333

9881 Broken Land Pkwy, #300
Columbia, MD 21046
klnb.com



HAMPTON COMMERCE CENTER

9223 - 9225 Hampton Overlook
Capitol Heights, MD 20743, Prince George's County



LOCATION

Spence Daw
sdaw@klnb.com
443-574-1429

Aaron Carroll
acarroll@klnb.com
202-652-2333

9881 Broken Land Pkwy, #300
Columbia, MD 21046
klnb.com



HAMPTON COMMERCE CENTER

9223 - 9225 Hampton Overlook
Capitol Heights, MD 20743, Prince George's County

CLICK TO VIEW PROPERTY WEBSITE

For More Information, Please Contact:

Spence Daw

sdaw@klnb.com

443-574-1429

Aaron Carroll

acarroll@klnb.com

202-652-2333

9881 Broken Land Parkway, Suite 300
Columbia, MD 21046

klnb.com



[instagram.com/klnbcre](https://www.instagram.com/klnbcre)



[linkedin.com/company/klnb](https://www.linkedin.com/company/klnb)



[facebook.com/KLNBCRE](https://www.facebook.com/KLNBCRE)

While we have no reason to doubt the accuracy of any of the information supplied, we cannot, and do not, guarantee its accuracy. All information should be independently verified prior to a purchase or lease of the property. We are not responsible for errors, omissions, misuse, or misinterpretation of information contained herein and make no warranty of any kind, express or implied, with respect to the property or any other matters.

OWNED & MANAGED BY:

