



NEARBY RETAILERS



PAD FOR SALE

- Size: 3.48 AC
- Price: \$750,000
- Zoning: DMX
- High traffic area on Great Mills Rd
- Close proximity to Naval Air Station Patuxent River.
- St. Mary's County: Excellent economic growth driven by military and defense industries.
- Flexible DMX zoning allows for a variety of uses.

MARKET

21437 GREAT MILLS RD

LEXINGTON PARK, MD 20653, ST. MARY'S COUNTY



Lexington Park/California
St. Mary's County | Maryland

klnb

Google Earth Pro Aerial Photograph

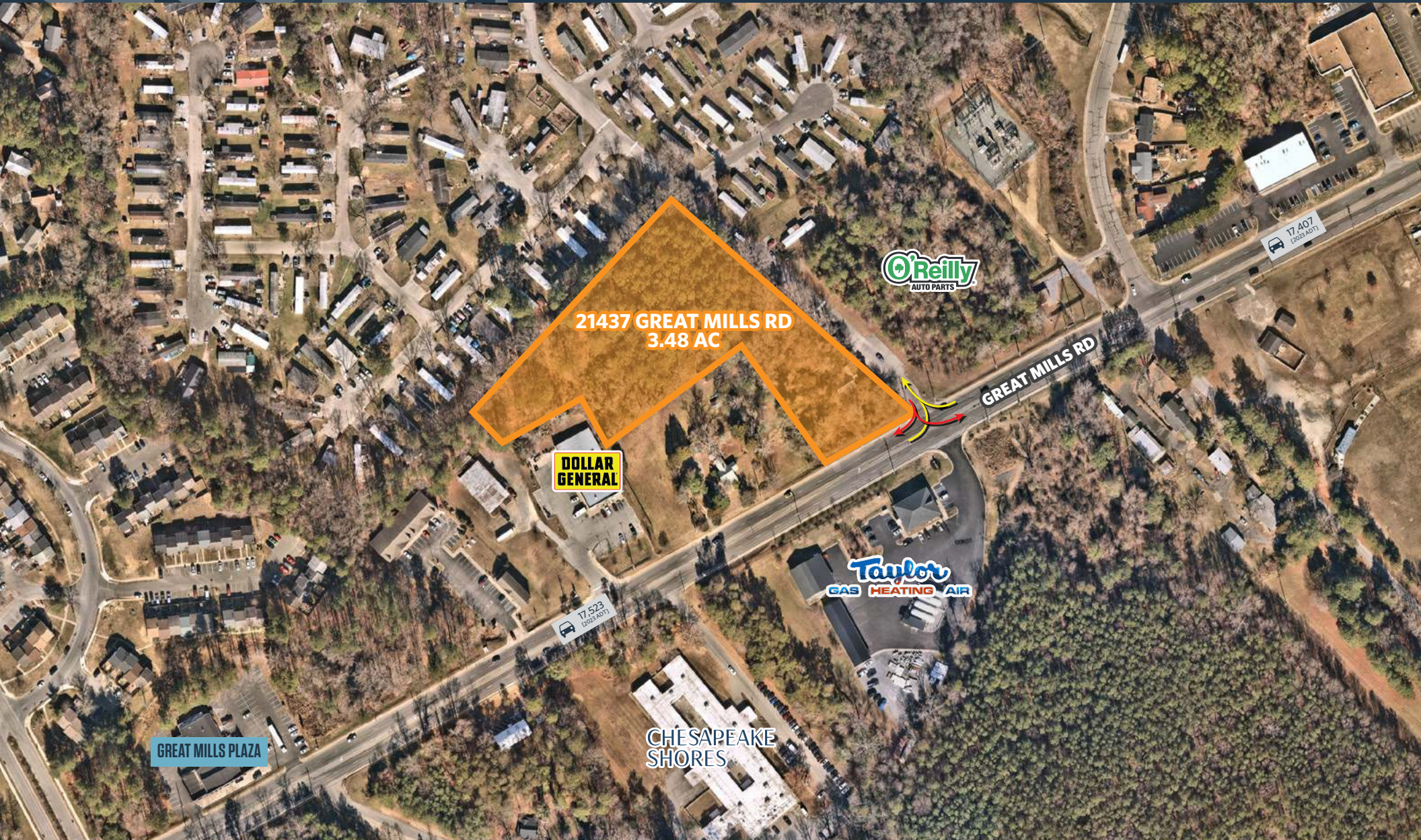
While we have no reason to doubt the accuracy of any of the information supplied, we cannot, and do not, guarantee its accuracy.



CLOSE UP

21437 GREAT MILLS RD

LEXINGTON PARK, MD 20653, ST. MARY'S COUNTY



BO GALLES

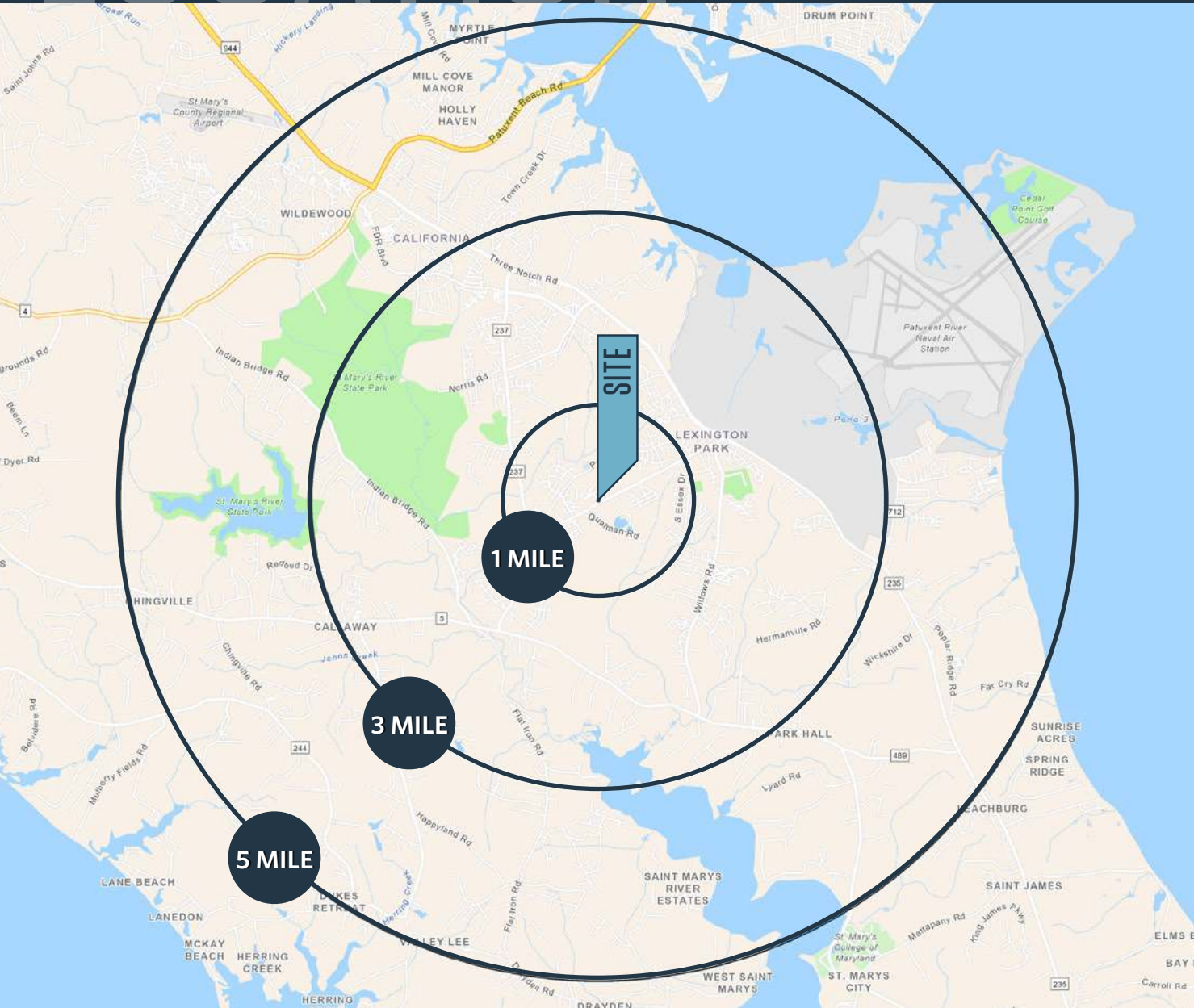
bgalles@klnb.com | 703-268-2712

klnb

LOCATION

21437 GREAT MILLS RD

LEXINGTON PARK, MD 20653, ST. MARY'S COUNTY



DEMOGRAPHICS | 2024:

1-MILE	3-MILE	5-MILE
Population		
6,585	28,477	46,557
Daytime Population		
1,486	28,477	30,050
Households		
2,535	11,149	18,517
Average HH Income		
\$92,318	\$112,610	\$123,289

[CLICK TO DOWNLOAD DEMOGRAPHIC REPORT](#)

TRAFFIC COUNTS | 2023:

Great Mills Rd	17,523 ADT
Chancellors Run Rd	18,502 ADT

BO GALLES

bgalles@klnb.com | 703-268-2712





21437 GREAT MILLS RD

LEXINGTON PARK, MD 20653, ST. MARY'S COUNTY

FOR MORE INFORMATION, PLEASE CONTACT:

BO GALLES

bgalles@klnb.com

703-268-2712

8065 Leesburg Pike, Suite 700, Tysons, VA 22182

.....

klnb.com



[instagram.com/klnbcre](https://www.instagram.com/klnbcre)



[linkedin.com/company/klnb](https://www.linkedin.com/company/klnb)



[facebook.com/KLNBCRE](https://www.facebook.com/KLNBCRE)

[CLICK TO VIEW PROPERTY WEBSITE](#)

While we have no reason to doubt the accuracy of any of the information supplied, we cannot, and do not, guarantee its accuracy. All information should be independently verified prior to a purchase or lease of the property. We are not responsible for errors, omissions, misuse, or misinterpretation of information contained herein and make no warranty of any kind, express or implied, with respect to the property or any other matters.