

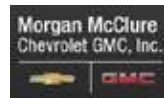
[CLICK HERE TO SEE FULL 13-SITE PORTFOLIO >](#)



JOIN THESE RETAILERS



**Russell County
Fairgrounds**



FORMER BANK BRANCH AVAILABLE

- Building Size: 2,700 SF with drive thru lanes
- Land Area: 1.24 Acres
- Approximately 23 parking spaces
- Large free standing pylon sign
- Close proximity to Castlewood Elementary (321 students) and High School (392)
- Asking Price: \$300,000

MATT SKALET

maskalet@klnb.com | 202-420-7775

BEN BECKER

bbecker@klnb.com | 202-420-7773

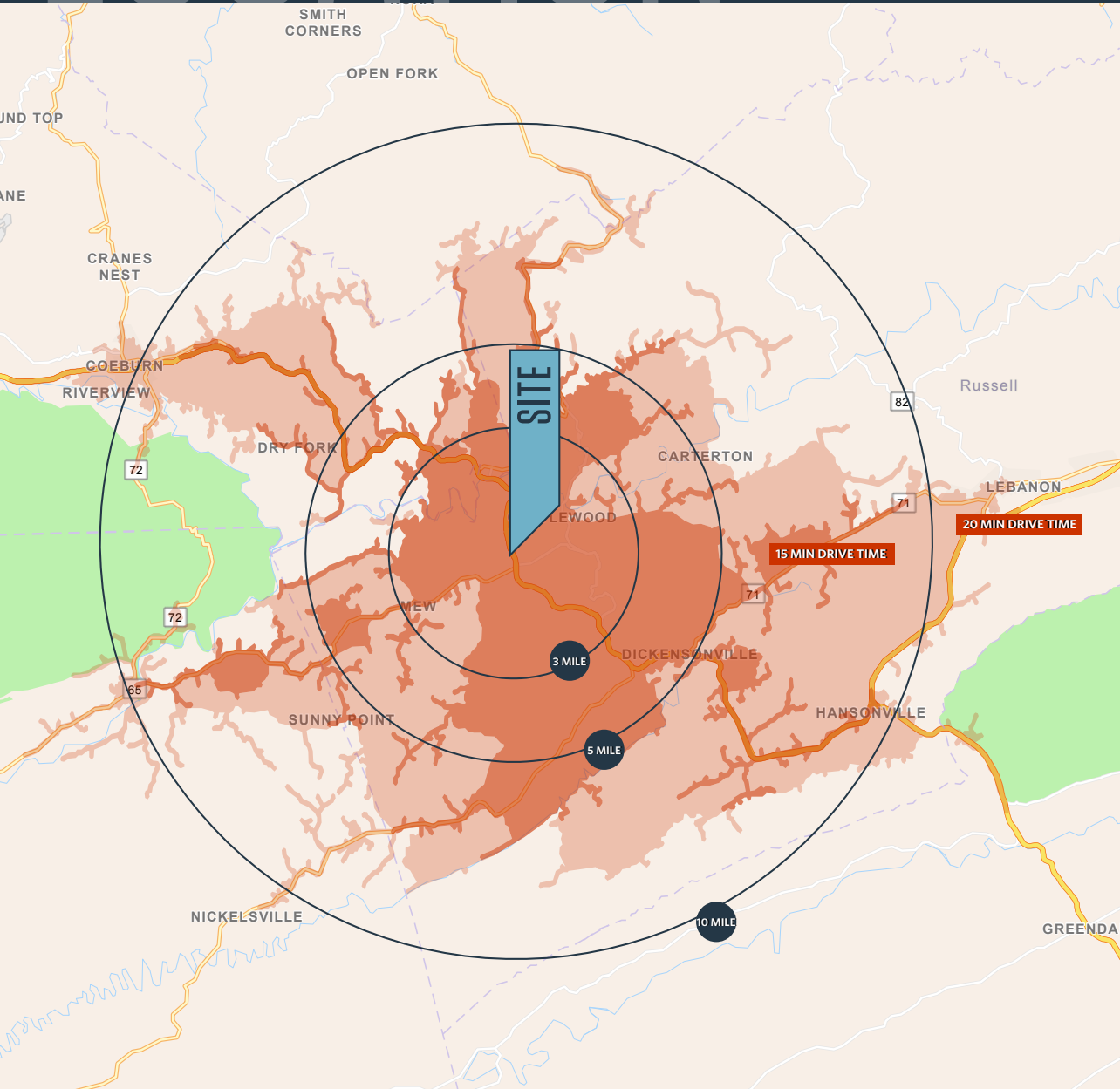
RYAN SCHMITZ

rschmitz@klnb.com | 202-602-1743

LOCATION

36 MINERS DRIVE

CASTLEWOOD, VA 24224, RUSSELL COUNTY



DEMOGRAPHICS | 2023:

	DRIVE TIME				
	3-MILE	5-MILE	10-MILE	15-MIN	20-MIN
Population	3,524	5,703	15,423	5,274	11,939
Daytime Population	3,280	4,950	12,086	4,604	10,786
Households	1,540	2,454	6,649	2,276	5,172
Average HH Income	\$55,721	\$54,510	\$53,240	\$54,807	\$54,670

TRAFFIC COUNTS | 2022:

Trail of the Lonesome Pine Us Hwy 58 Alternate	10,286 ADT
Miners Drive	738 ADT

MATT SKALET

maskalet@klnb.com | 202-420-7775

BEN BECKER

bbecker@klnb.com | 202-420-7773

RYAN SCHMITZ

rschmitz@klnb.com | 202-602-1743



AERIAL

36 MINERS DRIVE

CASTLEWOOD, VA 24224, RUSSELL COUNTY



MA&PA'S
DRIVE THRU

SUBWAY

EL PALENQUE

NEW PEOPLES BANK

SITE
36 MINERS DRIVE

Morgan McClure
Chevrolet GMC, Inc.

H&R BLOCK

SHELL

CASTLEWOOD HIGH, MIDDLE, &
ELEMENTARY SCHOOL
(713 STUDENTS)

MATT SKALET

m skalet@klnb.com | 202-420-7775

BEN BECKER

b becker@klnb.com | 202-420-7773

RYAN SCHMITZ

r schmitz@klnb.com | 202-602-1743

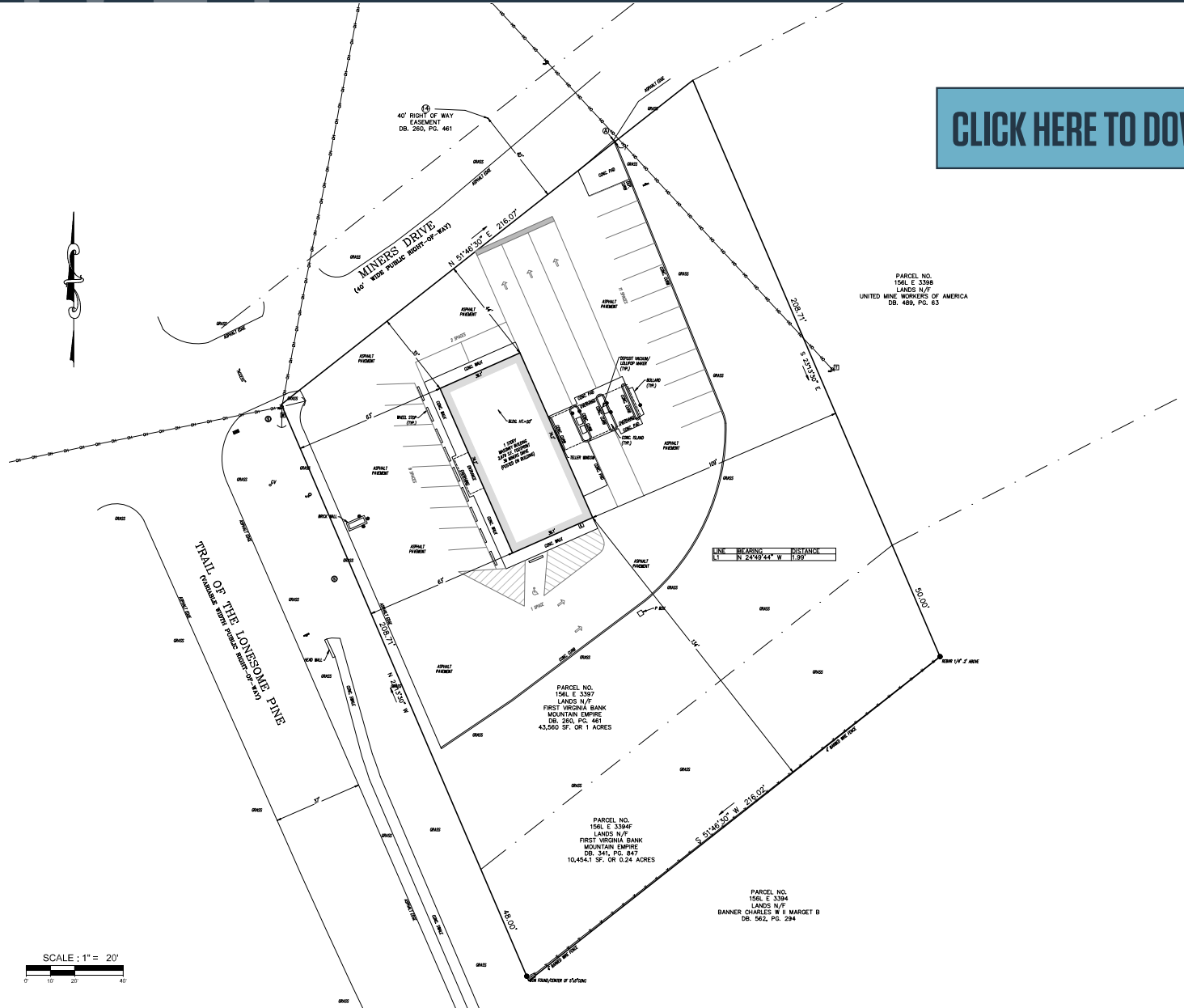


SURVEY

36 MINERS DRIVE

CASTLEWOOD, VA 24224, RUSSELL COUNTY

[CLICK HERE TO DOWNLOAD SURVEY](#)



MATT SKALET
mskalet@klnb.com | 202-420-7775

BEN BECKER
bbecker@klnb.com | 202-420-7773

RYAN SCHMITZ
rschmitz@klnb.com | 202-602-1743





36 MINERS DRIVE

CASTLEWOOD, VA 24224, RUSSELL COUNTY

FOR MORE INFORMATION, PLEASE CONTACT:

MATT SKALET

[mskalet@klnb.com](mailto:maskalet@klnb.com)

202-420-7775

BEN BECKER

bbecker@klnb.com

202-420-7773

RYAN SCHMITZ

rschmitz@klnb.com

202-602-1743

1130 Connecticut Ave, NW, Suite 600, Washington, DC 20036

.....

klnb.com



[instagram.com/klnbcre](https://www.instagram.com/klnbcre)



[linkedin.com/company/klnb](https://www.linkedin.com/company/klnb)



[facebook.com/KLNBCRE](https://www.facebook.com/KLNBCRE)

[CLICK TO VIEW PROPERTY WEBSITE](#)

While we have no reason to doubt the accuracy of any of the information supplied, we cannot, and do not, guarantee its accuracy. All information should be independently verified prior to a purchase or lease of the property. We are not responsible for errors, omissions, misuse, or misinterpretation of information contained herein and make no warranty of any kind, express or implied, with respect to the property or any other matters.