

[CLICK HERE TO SEE FULL 13-SITE PORTFOLIO >](#)



JOIN THESE RETAILERS



FORMER BANK BRANCH AVAILABLE

- Building Size: 6,812 SF with drive thru lanes
- Land Area: 0.87 Acres
- Approximately 25 parking spaces
- Large free standing pylon sign
- Asking Price: \$450,000

MATT SKALET

m skalet@klnb.com | 202-420-7775

BEN BECKER

b becker@klnb.com | 202-420-7773

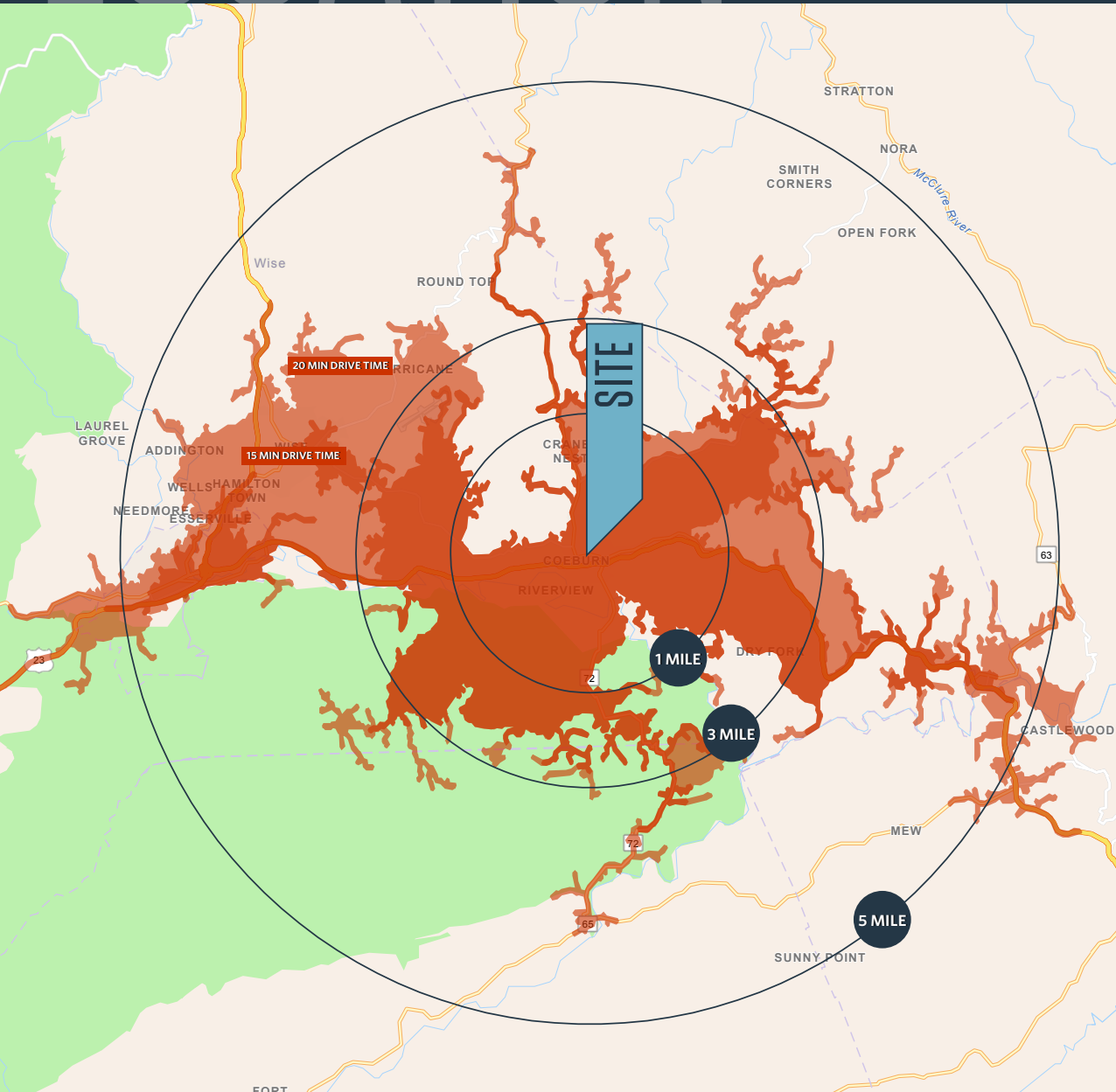
RYAN SCHMITZ

r schmitz@klnb.com | 202-602-1743

LOCATION

335 FRONT ST E

COEBURN, VA 24230, WISE COUNTY



DEMOGRAPHICS | 2023:

3-MILE	5-MILE	10-MILE	15-MIN	20-MIN	
Population	4,249	7,732	25,108	9,811	18,291
Daytime Population	4,353	6,943	24,779	10,318	9,209
Households	1,793	3,256	10,684	4,003	7,686
Average HH Income	\$50,732	\$52,624	\$56,618	\$54,331	\$57,161

TRAFFIC COUNTS | 2022:

Front St	4,015 ADT
Quillen Ave SE	1,300 ADT
VA 72	3,245 ADT
Bull Run Rd	8,000 ADT

MATT SKALET

maskalet@klnb.com | 202-420-7775

BEN BECKER

bbecker@klnb.com | 202-420-7773

RYAN SCHMITZ

rschmitz@klnb.com | 202-602-1743



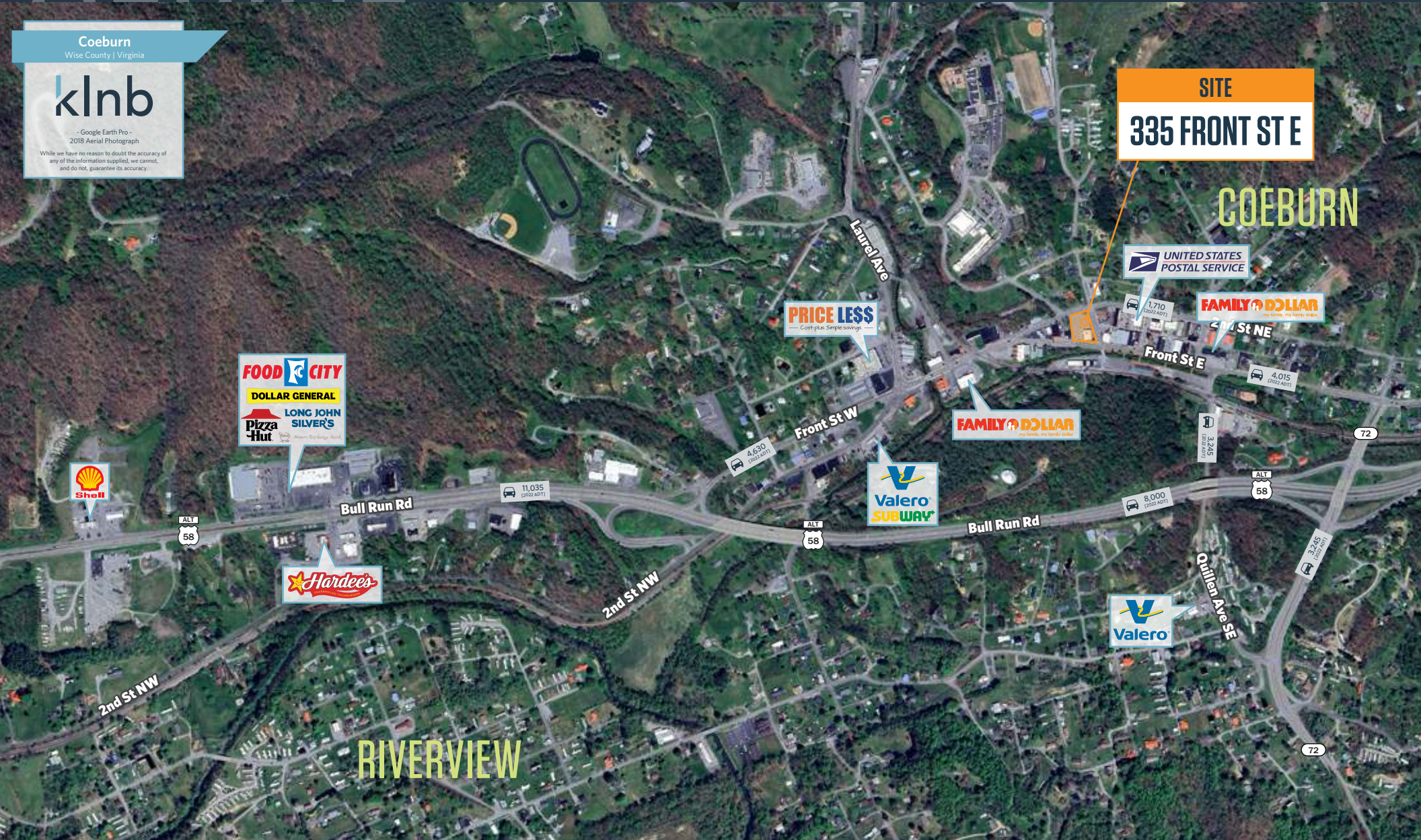
Coeburn

Wise County | Virginia

klnb

- Google Earth Pro -
2018 Aerial Photograph

While we have no reason to doubt the accuracy of any of the information supplied, we cannot, and do not, guarantee its accuracy.



SITE
335 FRONT ST E

COEBURN

RIVERVIEW

MATT SKALET

maskalet@klnb.com | 202-420-7775

BEN BECKER

bbecker@klnb.com | 202-420-7773

RYAN SCHMITZ

rschmitz@klnb.com | 202-602-1743

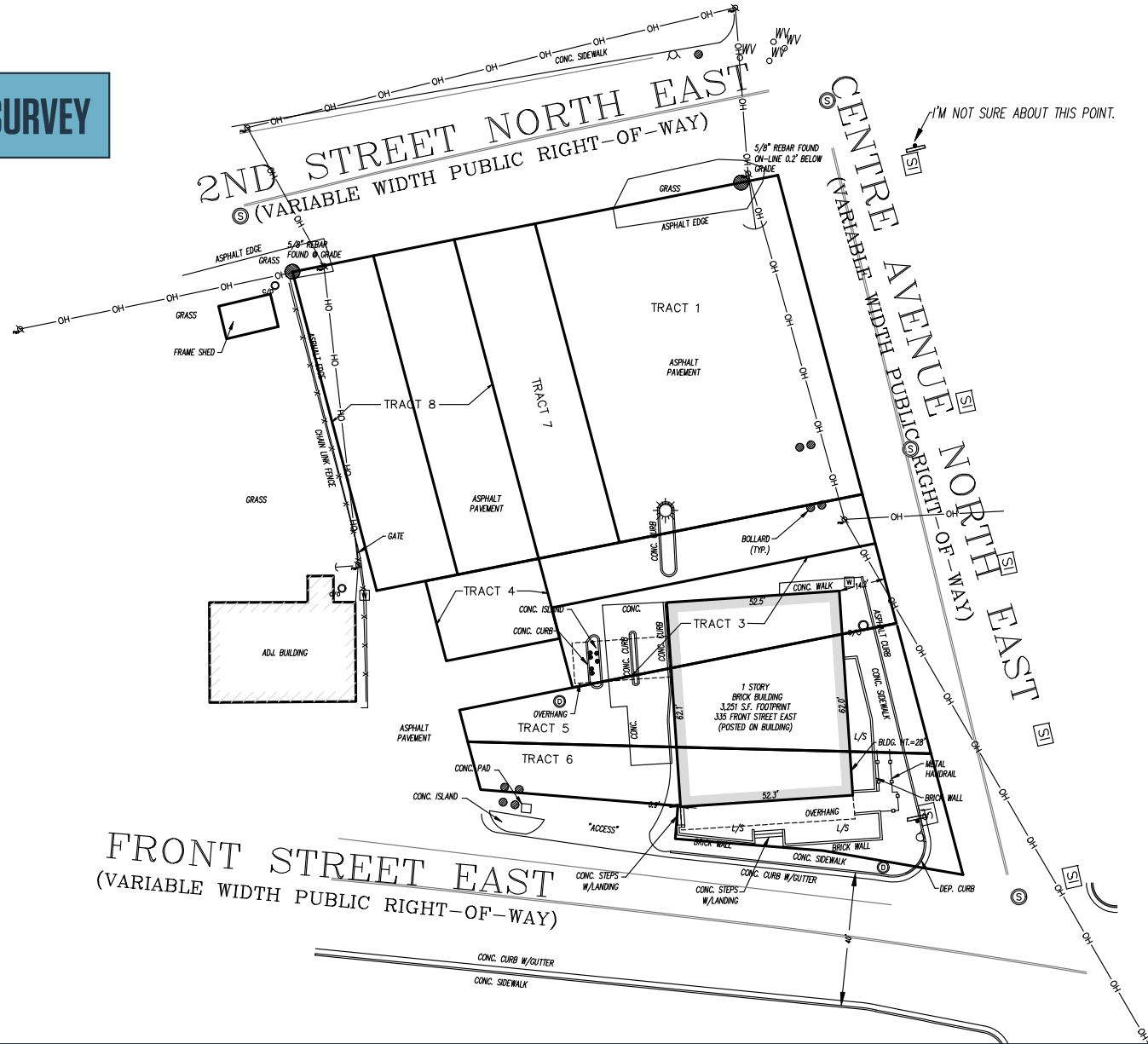
klnb

SURVEY

335 FRONT ST E

COEBURN, VA 24230, WISE COUNTY

[CLICK HERE TO DOWNLOAD SURVEY](#)



MATT SKALET

maskalet@klnb.com | 202-420-7775

BEN BECKER

bbecker@klnb.com | 202-420-7773

RYAN SCHMITZ

rschmitz@klnb.com | 202-602-1743





335 FRONT ST E

COEBURN, VA 24230, WISE COUNTY

FOR MORE INFORMATION, PLEASE CONTACT:

MATT SKALET

[mskalet@klnb.com](mailto:maskalet@klnb.com)

202-420-7775

BEN BECKER

bbecker@klnb.com

202-420-7773

RYAN SCHMITZ

rschmitz@klnb.com

202-602-1743

1130 Connecticut Ave, NW, Suite 600, Washington, DC 20036

.....

klnb.com



[instagram.com/klnbcre](https://www.instagram.com/klnbcre)



[linkedin.com/company/klnb](https://www.linkedin.com/company/klnb)



[facebook.com/KLNBCRE](https://www.facebook.com/KLNBCRE)

[CLICK TO VIEW PROPERTY WEBSITE](#)

While we have no reason to doubt the accuracy of any of the information supplied, we cannot, and do not, guarantee its accuracy. All information should be independently verified prior to a purchase or lease of the property. We are not responsible for errors, omissions, misuse, or misinterpretation of information contained herein and make no warranty of any kind, express or implied, with respect to the property or any other matters.