

[CLICK HERE TO SEE FULL 13-SITE PORTFOLIO >](#)



## JOIN THESE RETAILERS



## FORMER BANK BRANCH AVAILABLE

- Building Size: 6,440 SF 2 level building with approximately 3,220 SF per level
- Land Area: 0.42 Acres
- Approximately 32 parking spaces
- Single Drive thru lane
- Rare property with abundant parking in downtown Laurel
- Adjacent to City of Laurel Farmers Market

**MATT SKALET**

maskalet@klnb.com | 202-420-7775

**BEN BECKER**

bbecker@klnb.com | 202-420-7773

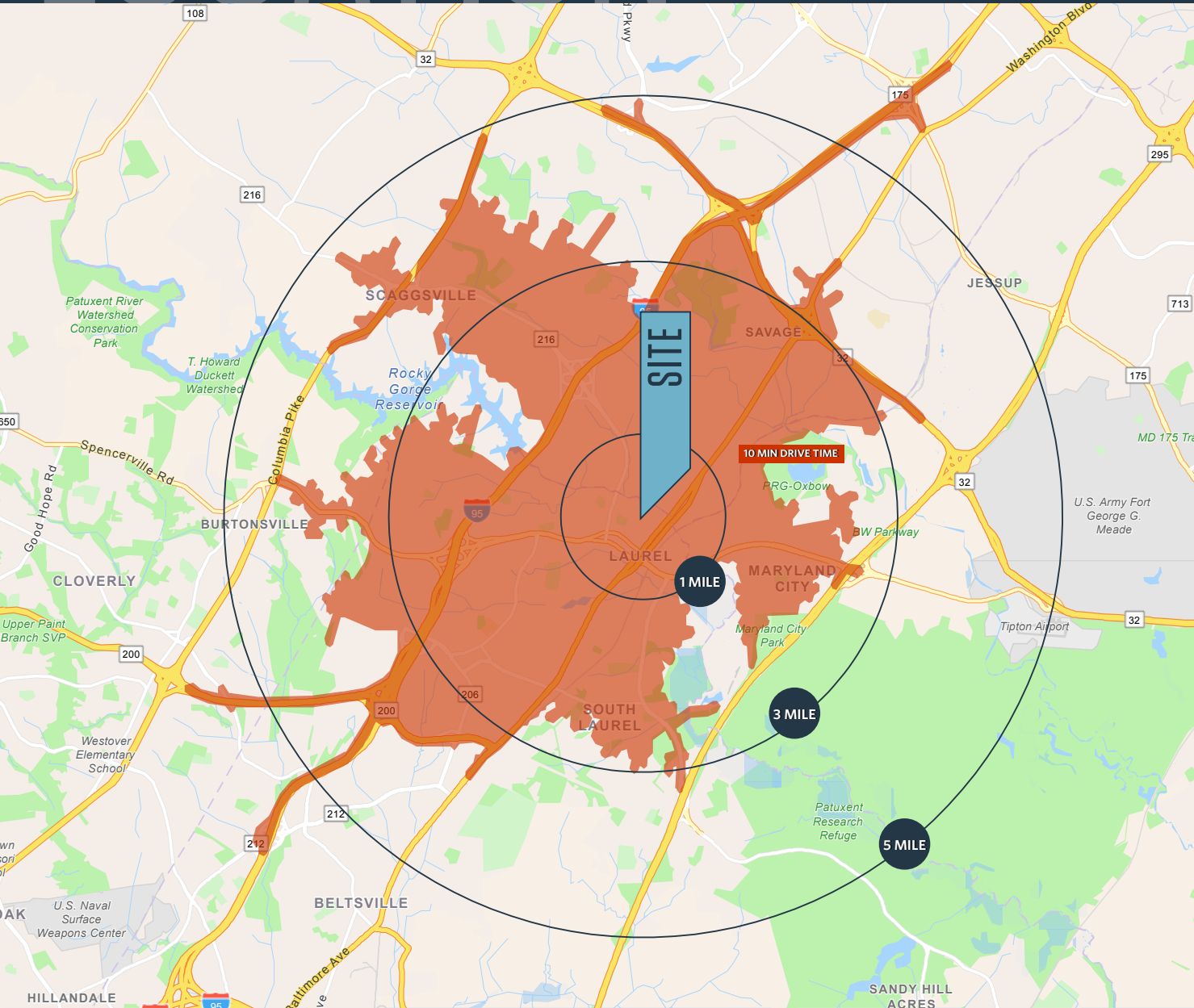
**RYAN SCHMITZ**

rschmitz@klnb.com | 202-602-1743

# LOCATION

# 380 MAIN STREET

LAUREL, MD 20707, PRINCE GEORGE'S COUNTY



## DEMOGRAPHICS | 2023:

	1-MILE	3-MILE	5-MILE	10-MIN
Population	19,439	105,245	178,715	101,243
Daytime Population	19,851	92,772	171,018	46,123
Households	7,400	39,456	64,042	37,572
Average HH Income	\$105,092	\$126,622	\$139,923	\$132,556

## TRAFFIC COUNTS | 2022:

Main Street 7,791 ADT

**MATT SKALET**

maskalet@klnb.com | 202-420-7775

**BEN BECKER**

bbecker@klnb.com | 202-420-7773

**RYAN SCHMITZ**

rschmitz@klnb.com | 202-602-1743





# 380 MAIN STREET

LAUREL, MD 20707, PRINCE GEORGE'S COUNTY

Laurel  
Prince George's County | Maryland

- Google Earth Pro Aerial Photograph -  
While we have no reason to doubt the accuracy of any of the information supplied, we cannot, and do not, guarantee its accuracy.

BURTONSVILLE TOWN SQUARE

53,787 (2022 ADP)

BURTONSVILLE CROSSING  
(FUTURE REDEVELOPMENT)

Greencastle 958

KONTERRA TOWN CENTER

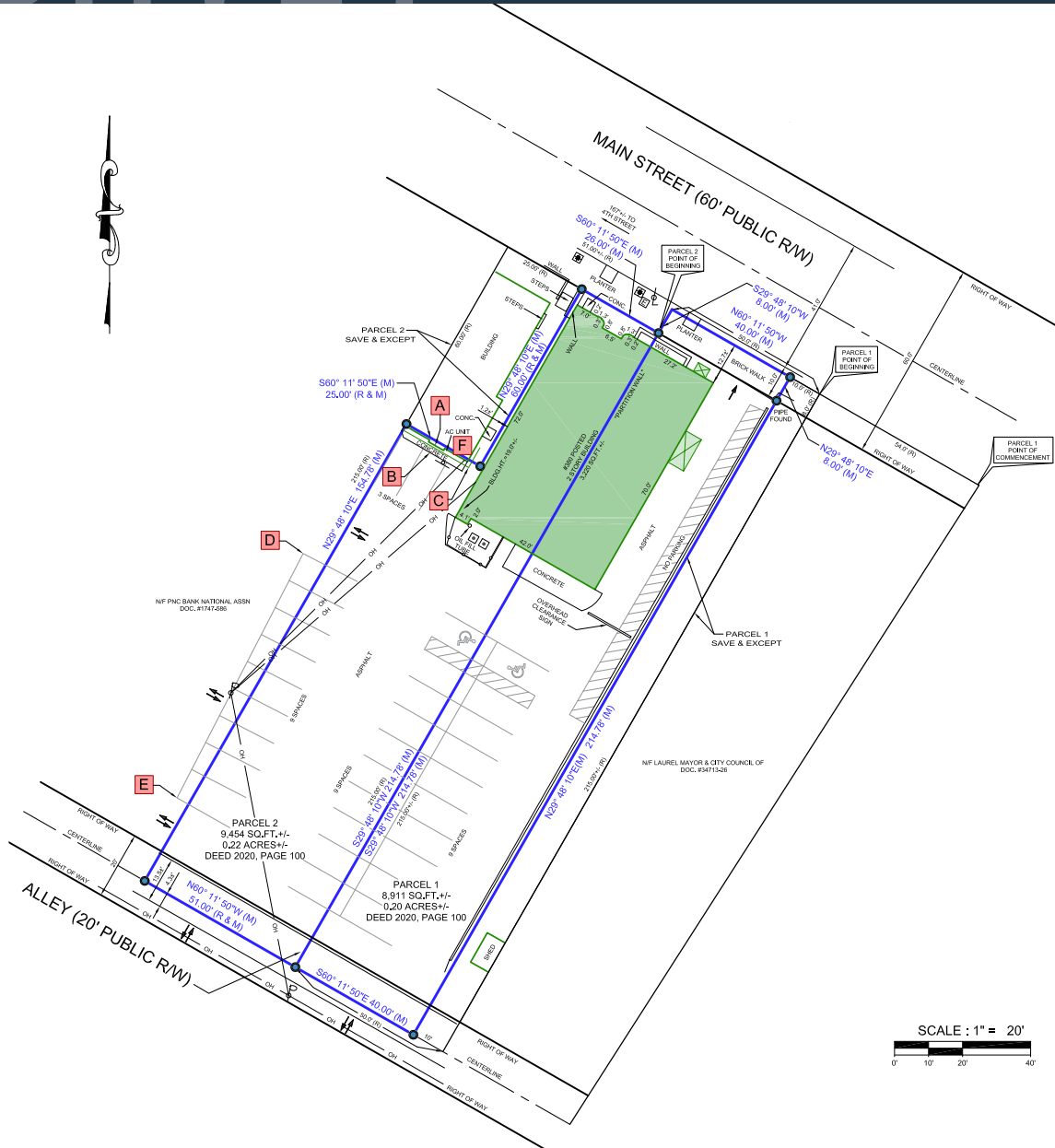
**MATT SKALET**  
mskalet@klnb.com | 202-420-7775

**BEN BECKER**  
bbecker@klnb.com | 202-420-7773

**RYAN SCHMITZ**  
rschmitz@klnb.com | 202-602-1743



[CLICK HERE TO DOWNLOAD SURVEY](#)



**MATT SKALET**

maskalet@klnb.com | 202-420-7775

**BEN BECKER**

bbecker@klnb.com | 202-420-7773

**RYAN SCHMITZ**

rschmitz@klnb.com | 202-602-1743





# 380 MAIN STREET

LAUREL, MD 20707, PRINCE GEORGE'S COUNTY

## FOR MORE INFORMATION, PLEASE CONTACT:

### MATT SKALET

[mskalet@klnb.com](mailto:maskalet@klnb.com)

202-420-7775

### BEN BECKER

[bbecker@klnb.com](mailto:bbecker@klnb.com)

202-420-7773

### RYAN SCHMITZ

[rschmitz@klnb.com](mailto:rschmitz@klnb.com)

202-602-1743

1130 Connecticut Ave, NW, Suite 600, Washington, DC 20036

.....

## klnb.com



[instagram.com/klnbcre](https://www.instagram.com/klnbcre)



[linkedin.com/company/klnb](https://www.linkedin.com/company/klnb)



[facebook.com/KLNBCRE](https://www.facebook.com/KLNBCRE)

[CLICK TO VIEW PROPERTY WEBSITE](#)

While we have no reason to doubt the accuracy of any of the information supplied, we cannot, and do not, guarantee its accuracy. All information should be independently verified prior to a purchase or lease of the property. We are not responsible for errors, omissions, misuse, or misinterpretation of information contained herein and make no warranty of any kind, express or implied, with respect to the property or any other matters.