

[CLICK HERE TO SEE FULL 13-SITE PORTFOLIO >](#)



1.6 ACRE PAD SITE OR DEVELOPMENT OPPORTUNITY
21,420 SF BUILDING WITH 100+ PARKING SPACES

MATT SKALET

maskalet@klnb.com | 202-420-7775

BEN BECKER

bbecker@klnb.com | 202-420-7773

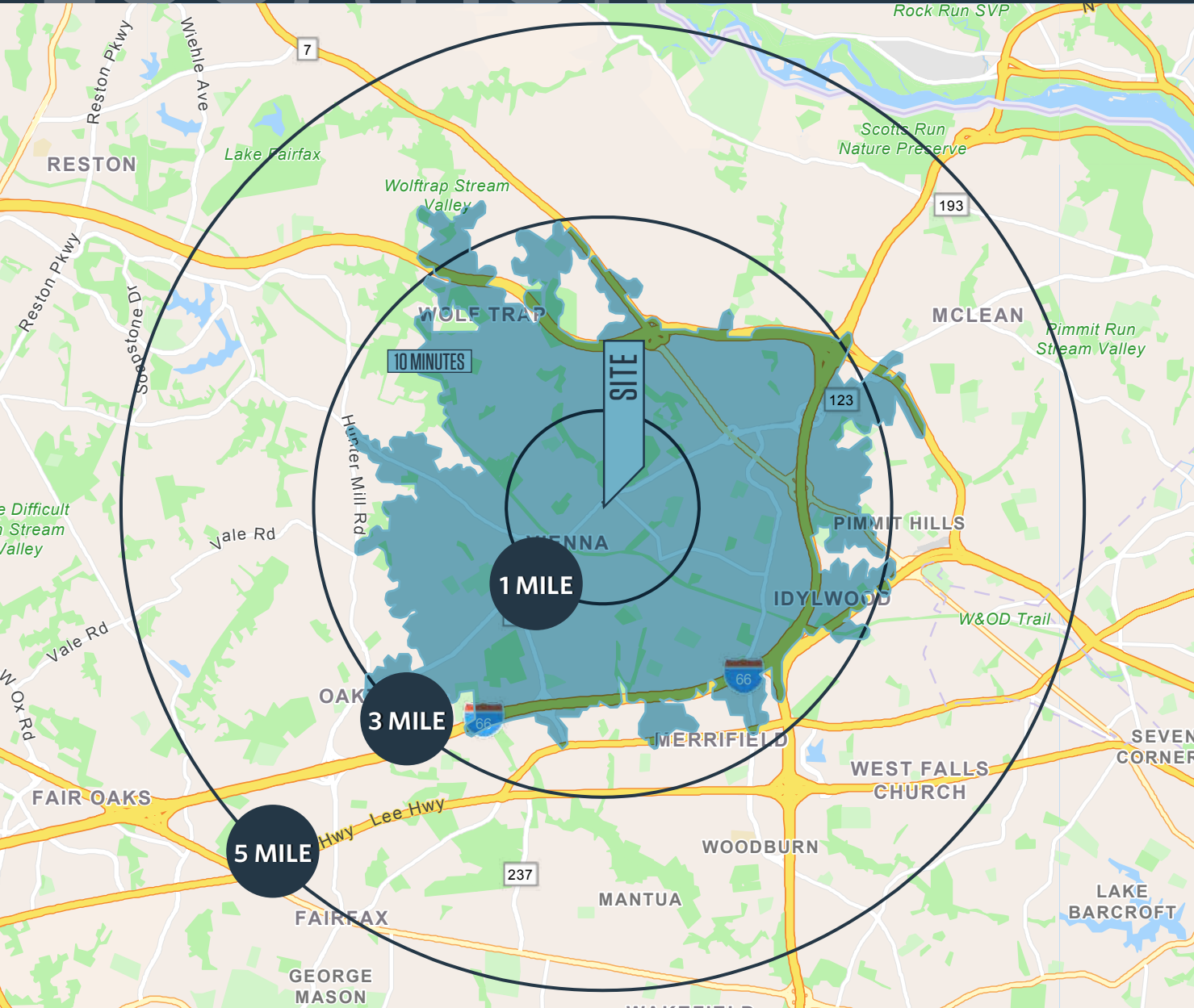
RYAN SCHMITZ

rschmitz@klnb.com | 202-602-1743

LOCATION

515 MAPLE AVE E

VIENNA, VA 22180, FAIRFAX COUNTY



SITE DETAILS:

- Rare 1.6 Acre corner parcel
- 3 Level Building with approximately 7,140 SF per level
- Approximately 105 parking spaces

DEMOGRAPHICS | 2023:

DRIVE TIME: 10-MIN	RADIUS: 1-MILE	3-MILE	5-MILE	
Population	85,895	9,667	120,205	271,128
Daytime Population	112,197	11,974	135,434	246,975
Households	34,514	3,281	47,494	101,830
Average HH Income	\$217,946	\$282,595	\$217,216	\$221,053

TRAFFIC COUNTS | 2022:

Maple Ave E	29,998 ADT
Berry St SE	720 ADT

MATT SKALET

maskalet@klnb.com | 202-420-7775

BEN BECKER

bbecker@klnb.com | 202-420-7773

RYAN SCHMITZ

rschmitz@klnb.com | 202-602-1743



AERIAL

515 MAPLE AVE E

VIENNA, VA 22180, FAIRFAX COUNTY



MATT SKALET
mskalet@klnb.com | 202-420-7775

BEN BECKER
bbecker@klnb.com | 202-420-7773

RYAN SCHMITZ
rschmitz@klnb.com | 202-602-1743



Vienna
Fairfax County | Virginia

klnb

- Google Earth Pro -

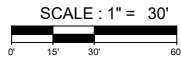
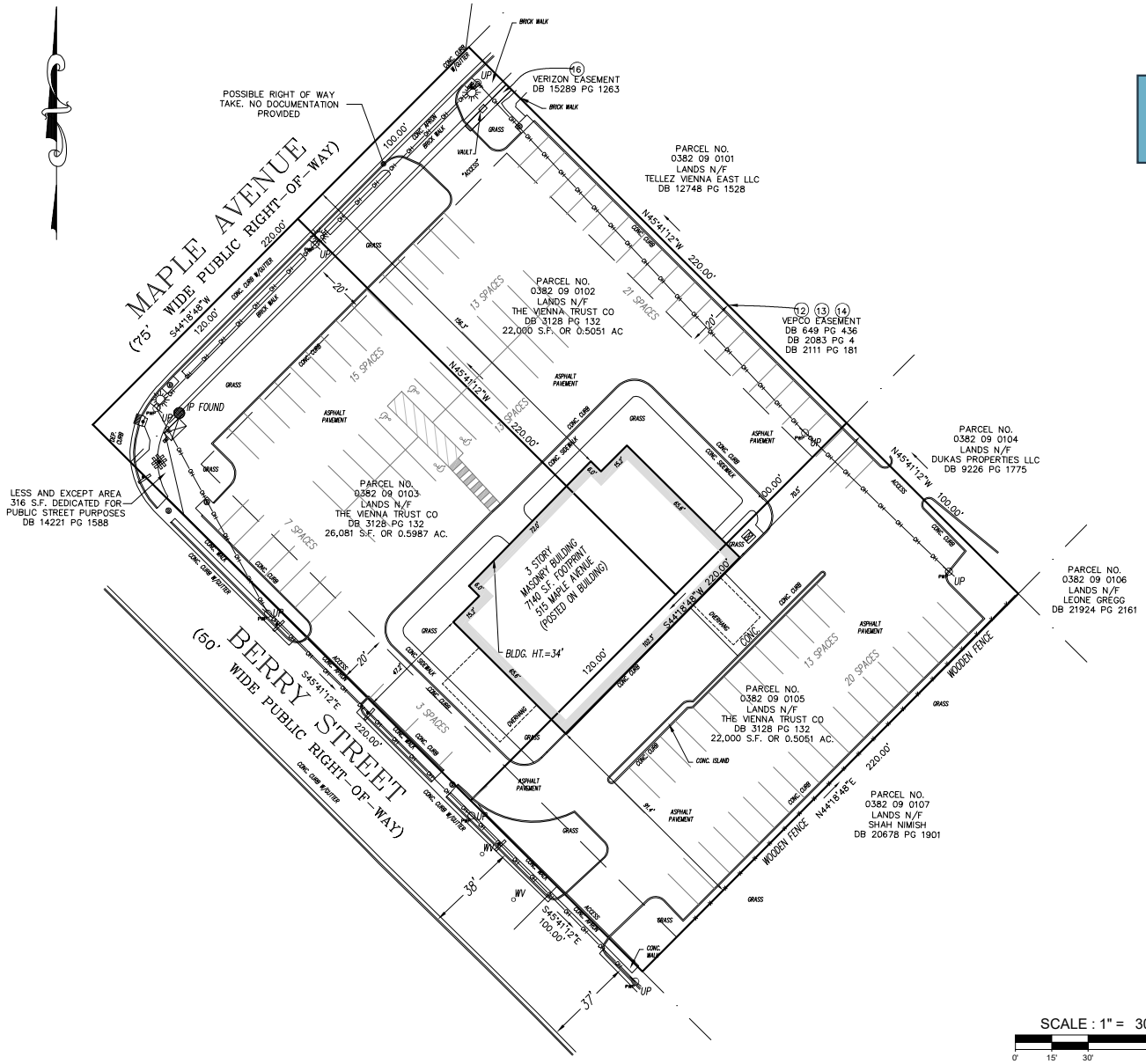
While we have no reason to doubt the accuracy of any of the information supplied, we cannot, and do not, guarantee its accuracy.

SURVEY

515 MAPLE AVE E

VIENNA, VA 22180, FAIRFAX COUNTY

[CLICK HERE TO DOWNLOAD SURVEY](#)



MATT SKALET

maskalet@klnb.com | 202-420-7775

BEN BECKER

bbecker@klnb.com | 202-420-7773

RYAN SCHMITZ

rschmitz@klnb.com | 202-602-1743





515 MAPLE AVE E

VIENNA, VA 22180, FAIRFAX COUNTY

FOR MORE INFORMATION, PLEASE CONTACT:

MATT SKALET

[mskalet@klnb.com](mailto:maskalet@klnb.com)

202-420-7775

BEN BECKER

bbecker@klnb.com

202-420-7773

RYAN SCHMITZ

rschmitz@klnb.com

202-602-1743

1130 Connecticut Ave, NW, Suite 600, Washington, DC 20036

.....

klnb.com



[instagram.com/klnbcre](https://www.instagram.com/klnbcre)



[linkedin.com/company/klnb](https://www.linkedin.com/company/klnb)



[facebook.com/KLNBCRE](https://www.facebook.com/KLNBCRE)

[CLICK TO VIEW PROPERTY WEBSITE](#)

While we have no reason to doubt the accuracy of any of the information supplied, we cannot, and do not, guarantee its accuracy. All information should be independently verified prior to a purchase or lease of the property. We are not responsible for errors, omissions, misuse, or misinterpretation of information contained herein and make no warranty of any kind, express or implied, with respect to the property or any other matters.