

[CLICK HERE TO SEE FULL 13-SITE PORTFOLIO >](#)



Hamilton Ave
7,399 ADT

Harford Road
11,927 ADT

JOIN THESE RETAILERS



FORMER BANK BRANCH AVAILABLE

- Building Size: 4,706 SF with drive thru lanes
1st+ 2nd Floor: roughly 2,487 SF | 3rd Floor: roughly 2,400 SF
- Land Area: 0.27 Acres
- Located at traffic signaled intersection
- Abundant street parking
- Rare corner parcel in vibrant Baltimore City

MATT SKALET

maskalet@klnb.com | 202-420-7775

BEN BECKER

bbecker@klnb.com | 202-420-7773

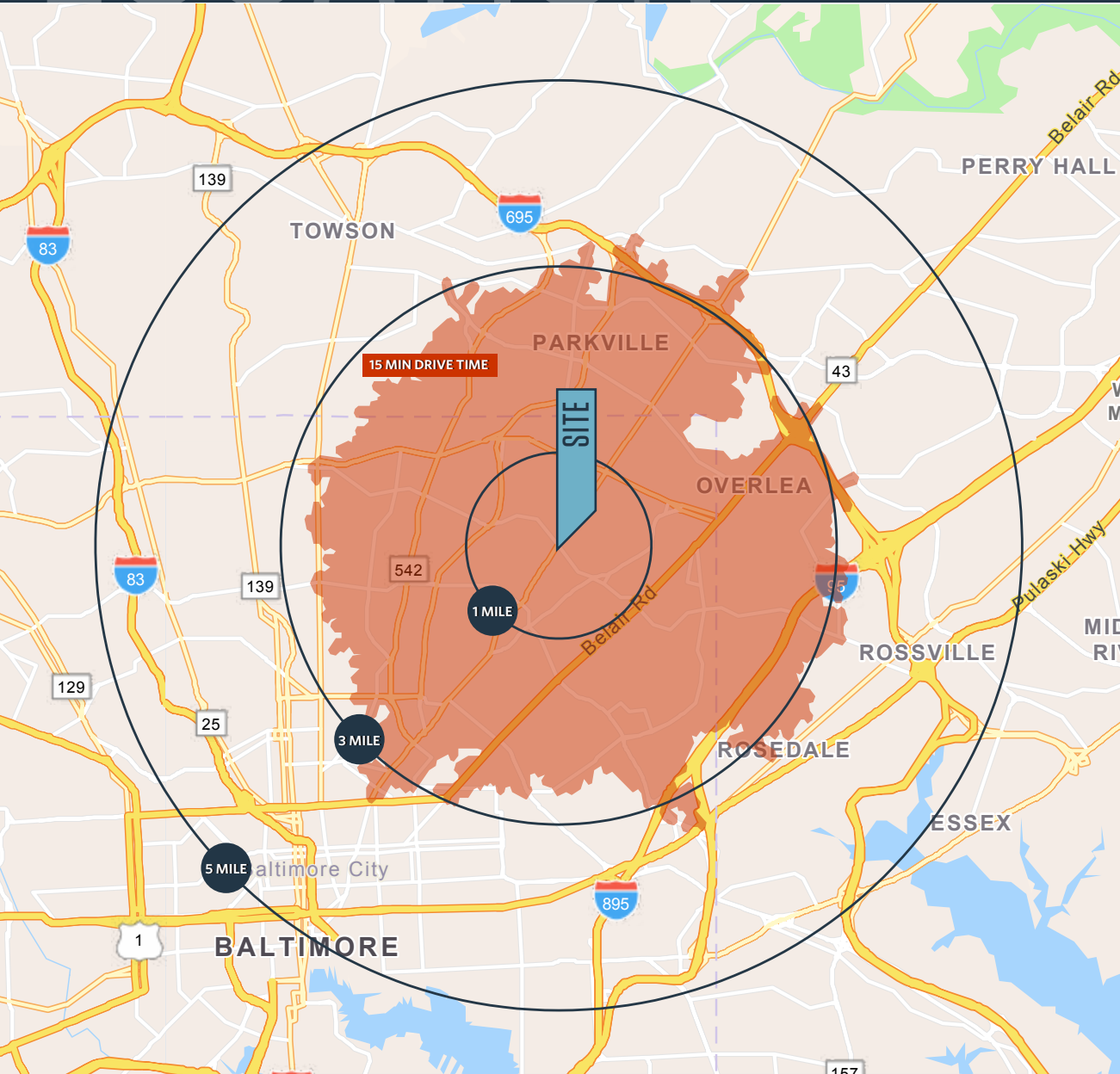
RYAN SCHMITZ

rschmitz@klnb.com | 202-602-1743

LOCATION

5439 HARFORD ROAD

BALTIMORE, MD 21214, BALTIMORE CITY



DEMOGRAPHICS | 2023:

	1-MILE	3-MILE	5-MILE	10-MIN DRIVE TIME
Population	21,300	202,423	491,984	183,680
Daytime Population	15,026	146,859	507,309	131,165
Households	8,631	83,074	206,459	75,099
Average HH Income	\$98,166	\$88,262	\$100,407	\$85,010

TRAFFIC COUNTS | 2022:

Harford Road	11,927 ADT
Hamilton Avenue	7,399 ADT
Echodale Avenue	10,330 ADT

MATT SKALET

maskalet@klnb.com | 202-420-7775

BEN BECKER

bbecker@klnb.com | 202-420-7773

RYAN SCHMITZ

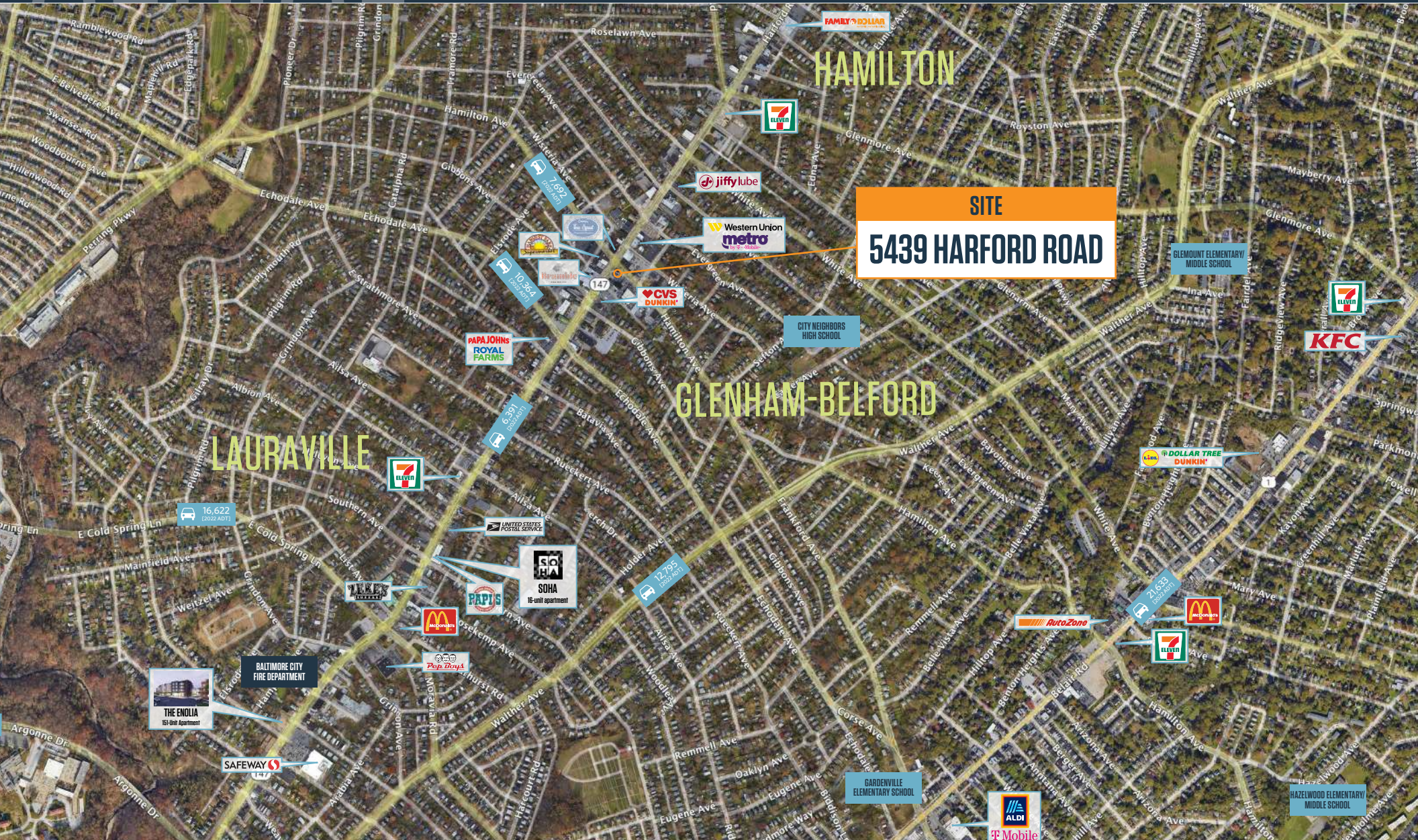
rschmitz@klnb.com | 202-602-1743



AERIAL

5439 HARFORD ROAD

BALTIMORE, MD 21214, BALTIMORE CITY



MATT SKALET

maskalet@klnb.com | 202-420-7775

BEN BECKER

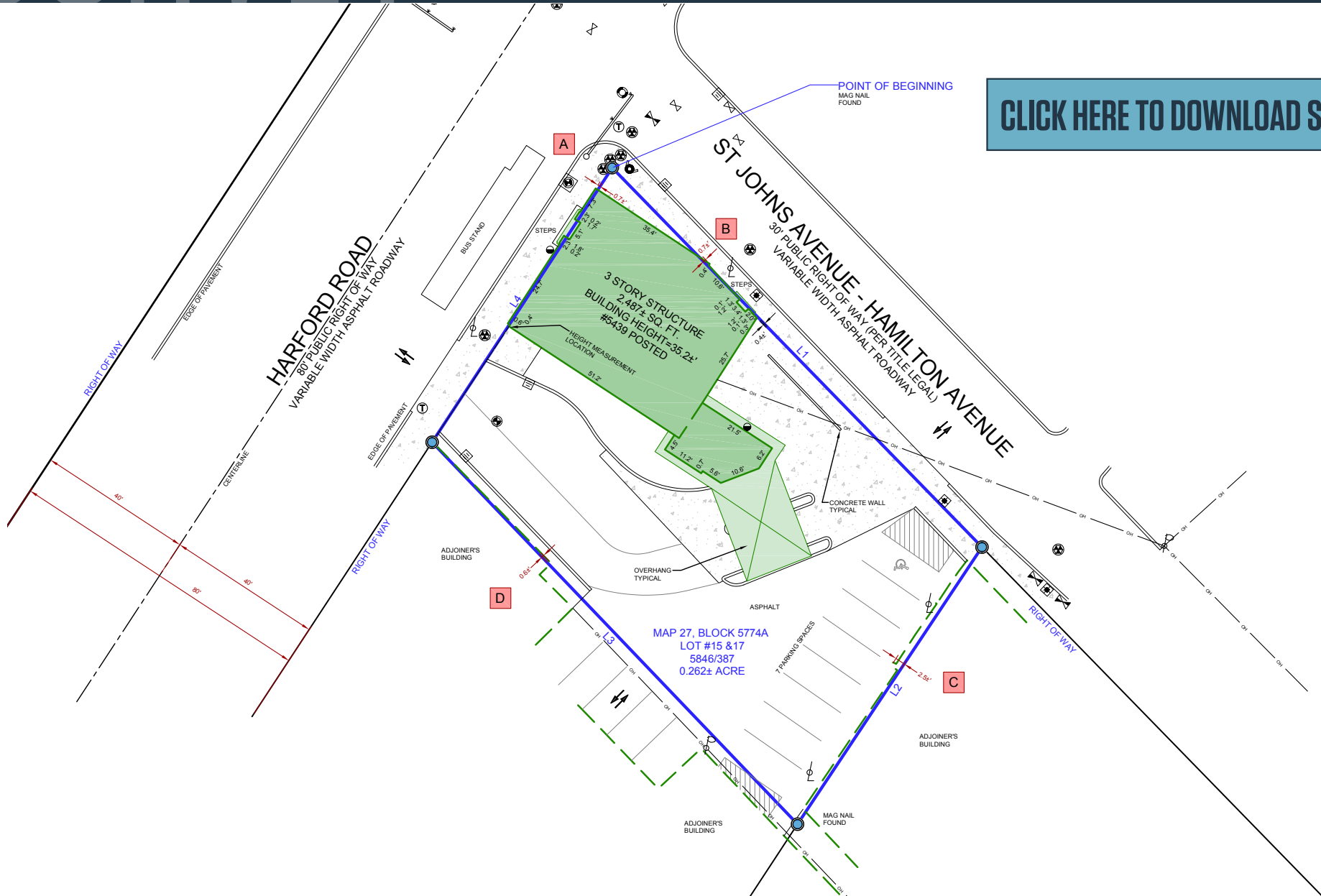
bbecker@klnb.com | 202-420-7773

RYAN SCHMITZ

rschmitz@klnb.com | 202-602-1743

klnb

[CLICK HERE TO DOWNLOAD SURVEY](#)





5439 HARFORD ROAD

BALTIMORE, MD 21214, BALTIMORE CITY

FOR MORE INFORMATION, PLEASE CONTACT:

MATT SKALET

maskalet@klnb.com
202-420-7775

BEN BECKER

bbecker@klnb.com
202-420-7773

RYAN SCHMITZ

rschmitz@klnb.com
202-602-1743

1130 Connecticut Ave, NW, Suite 600, Washington, DC 20036

.....
klnb.com



[instagram.com/klnbcre](https://www.instagram.com/klnbcre)



[linkedin.com/company/klnb](https://www.linkedin.com/company/klnb)



[facebook.com/KLNBCRE](https://www.facebook.com/KLNBCRE)

[CLICK TO VIEW PROPERTY WEBSITE](#)

While we have no reason to doubt the accuracy of any of the information supplied, we cannot, and do not, guarantee its accuracy. All information should be independently verified prior to a purchase or lease of the property. We are not responsible for errors, omissions, misuse, or misinterpretation of information contained herein and make no warranty of any kind, express or implied, with respect to the property or any other matters.