

[CLICK HERE TO SEE FULL 13-SITE PORTFOLIO >](#)



## JOIN THESE RETAILERS



## FORMER BANK BRANCH AVAILABLE

- Building Size: 1,997 SF with drive thru lanes
- Land Area: 0.43 Acres
- Large free standing sign
- Highly visible to Oxon Hill Road's 29,630 ADT
- Directly across the street from Rivertowne Commons Marketplace and proximate to National Harbor + Tanger Outlets

**MATT SKALET**

maskalet@klnb.com | 202-420-7775

**BEN BECKER**

bbecker@klnb.com | 202-420-7773

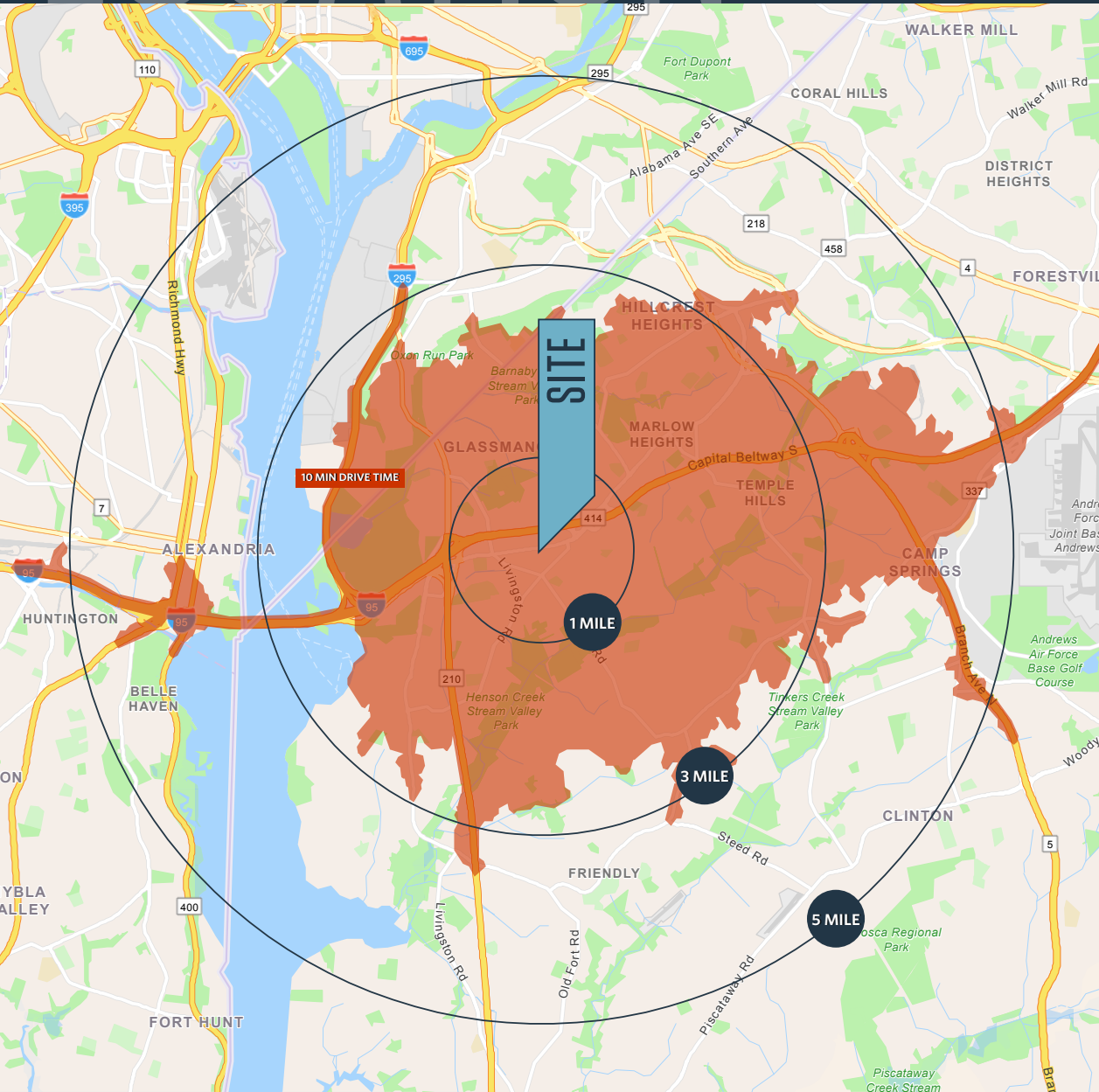
**RYAN SCHMITZ**

rschmitz@klnb.com | 202-602-1743

# LOCATION

# 6168 OXON HILL ROAD

OXON HILL, MD 20745, PRINCE GEORGE'S COUNTY



## DEMOGRAPHICS | 2023:

	1-MILE	3-MILE	5-MILE	10-MIN
Population	15,247	122,682	328,437	190,246
Daytime Population	12,464	113,245	335,048	171,697
Households	5,836	48,596	141,292	80,530
Average HH Income	\$93,431	\$93,654	\$123,869	\$106,958

## TRAFFIC COUNTS | 2022:

Oxon Hill Road	29,630 ADT
Capital Beltway	183,327 ADT

**MATT SKALET**

maskalet@klnb.com | 202-420-7775

**BEN BECKER**

bbecker@klnb.com | 202-420-7773

**RYAN SCHMITZ**

rschmitz@klnb.com | 202-602-1743







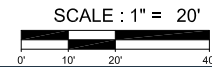
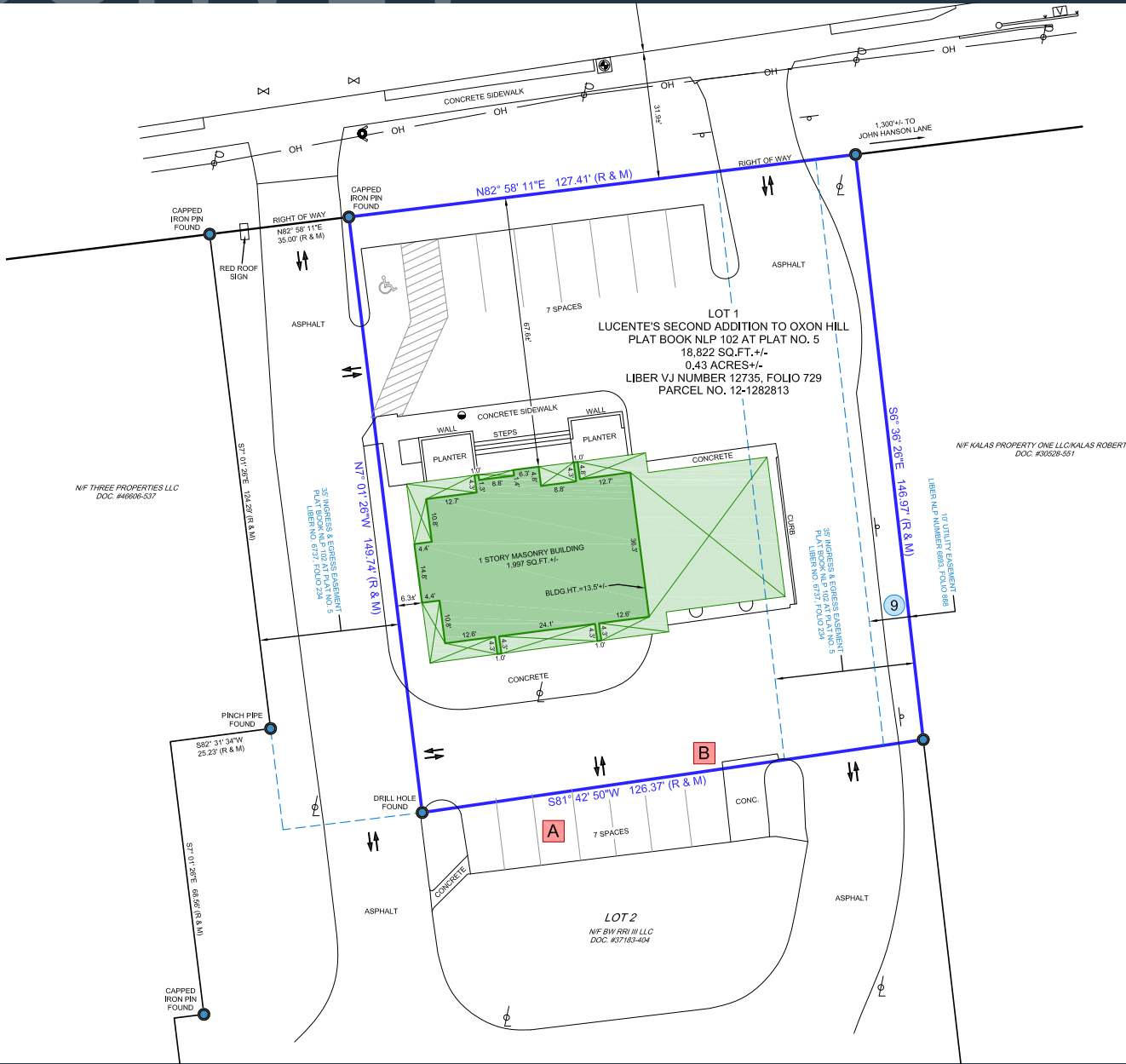


# SURVEY

# 6168 OXON HILL ROAD

OXON HILL, MD 20745, PRINCE GEORGE'S COUNTY

[CLICK HERE TO DOWNLOAD SURVEY](#)



**MATT SKALET**

maskalet@klnb.com | 202-420-7775

**BEN BECKER**

bbecker@klnb.com | 202-420-7773

**RYAN SCHMITZ**

rschmitz@klnb.com | 202-602-1743





# 6168 OXON HILL ROAD

OXON HILL, MD 20745, PRINCE GEORGE'S COUNTY

## FOR MORE INFORMATION, PLEASE CONTACT:

### MATT SKALET

[mskalet@klnb.com](mailto:maskalet@klnb.com)

202-420-7775

### BEN BECKER

[bbecker@klnb.com](mailto:bbecker@klnb.com)

202-420-7773

### RYAN SCHMITZ

[rschmitz@klnb.com](mailto:rschmitz@klnb.com)

202-602-1743

1130 Connecticut Ave, NW, Suite 600, Washington, DC 20036

.....

## klnb.com



[instagram.com/klnbcre](https://www.instagram.com/klnbcre)



[linkedin.com/company/klnb](https://www.linkedin.com/company/klnb)



[facebook.com/KLNBCRE](https://www.facebook.com/KLNBCRE)

[CLICK TO VIEW PROPERTY WEBSITE](#)

While we have no reason to doubt the accuracy of any of the information supplied, we cannot, and do not, guarantee its accuracy. All information should be independently verified prior to a purchase or lease of the property. We are not responsible for errors, omissions, misuse, or misinterpretation of information contained herein and make no warranty of any kind, express or implied, with respect to the property or any other matters.