

# WHITE OAK

TOWN CENTER

12345 COLUMBIA PIKE  
SILVER SPRING, MD 20904

JOIN



OAK BARREL & VINE

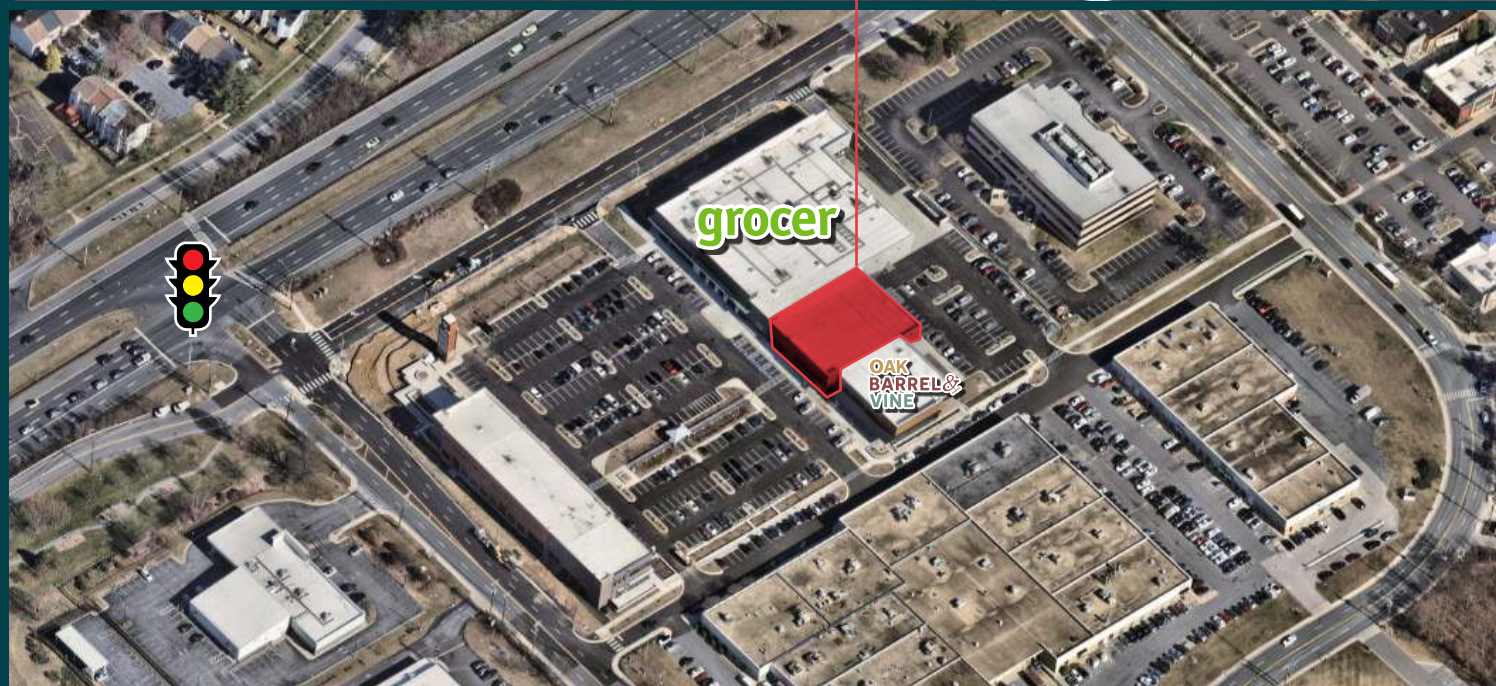


FOR LEASING





## LAST BLOCK OF RETAIL SPACE REMAINING





13,065 SF CAN BE DEMISED



# SITE OVERVIEW AND AREA DEMOGRAPHICS

- Grocery anchored development in Montgomery County, Maryland with **at grade parking**
- 103,000 square feet of retail
- **JOIN:**

- Prime corner location with access via two traffic signals on Columbia Pike  **54,932 ADT**
- Excellent demographics with strong **residential and office populations**

## DEMOGRAPHICS

	 POPULATION	 AVERAGE HH INCOME	 DAYTIME POPULATION	 NUMBER OF HOUSEHOLDS
1 mile	11,879	\$119,115	17,293	3,976
2 miles	59,522	\$120,276	56,584	20,737
3 miles	112,451	\$134,623	94,098	38,348

## DRIVE TIME DEMOGRAPHICS

5 minute	20,102	\$112,737	19,421	6,750
10 minute	119,787	\$135,804	104,983	41,561
15 minute	433,632	\$136,758	369,387	154,764



# AERIAL VIEW TO THE EAST



29

# NEW GROCERY ANCHORED DEVELOPMENT



# SITE PLAN

COLUMBIA PIKE - 54,932 VPD

OLD COLUMBIA PIKE

AVAILABLE  
AT LEASE

PYLON

SURFACE PARKING 370 SPACES

grocer

20,000 SF

FIRST WATCH  
THE DAYTIME CAFE

Inspire  
NAIL BAR

DAVID'S HOT DELICIOUS

EUROPEAN WAX CENTER

1,800 SF

ELEC. RM LOBBY

Starbucks

AT&T

13,055 SF

SEE NEXT PAGE FOR  
DEMISING OPTIONS

3,108 SF

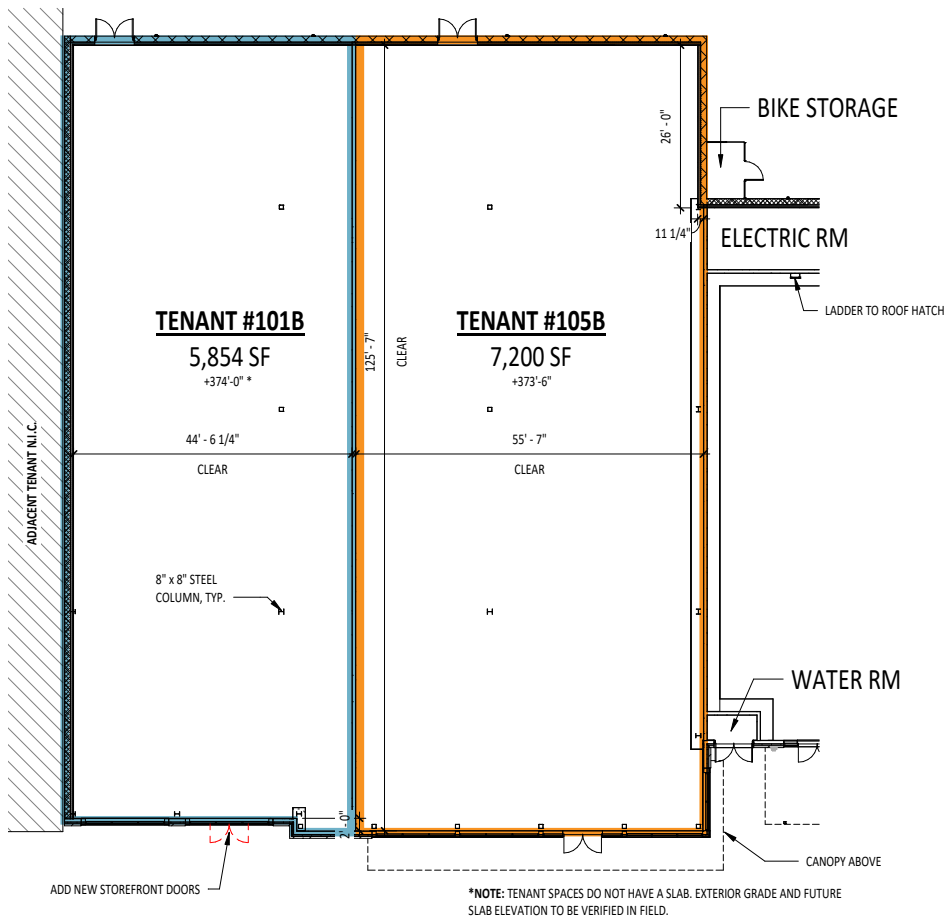
OAK BARREL & VINE

INDUSTRIAL PARKWAY

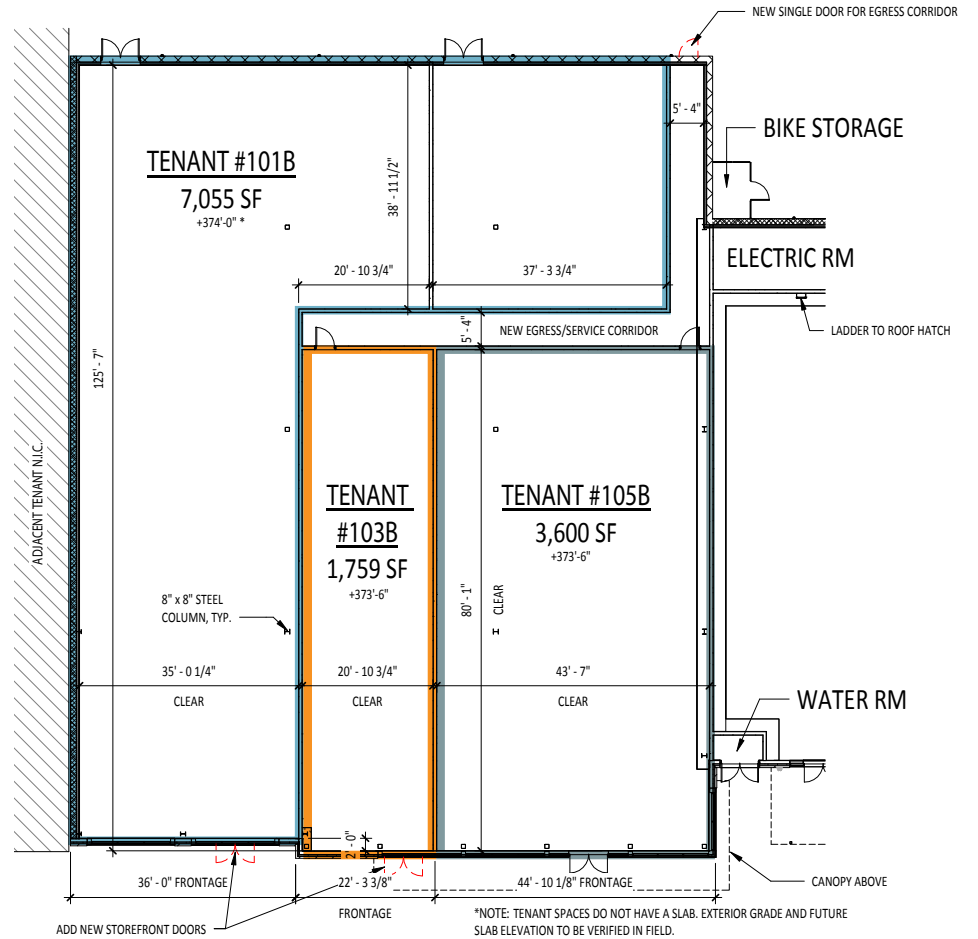
SPINE ROAD

# DEMISING PLAN

## OPTION. A



## OPTION. B



# WHITE OAK

## TOWN CENTER

12345 COLUMBIA PIKE, SILVER SPRING, MD 20904

### RETAIL

**KIM STEIN**  
202.652.2338

**MATT SKALET**  
202.420.7775

### MEDICAL/OFFICE

**KEN FELLOWS**  
301.222.0210

**ROB PUGH**  
301.222.0211

**KEIRY MARTINEZ**  
703.334.5629



While we have no reason to doubt the accuracy of any of the information supplied, we cannot, and do not, guarantee its accuracy. All information should be independently verified prior to a purchase or lease of the property. We are not responsible for errors, omissions, misuse, or misinterpretation of information contained herein and make no warranty of any kind, express or implied, with respect to the property or any other matters.