



# GIRARD BUSINESS CENTER

200 Girard Street, Gaithersburg, MD 20877  
220 Girard Street, Gaithersburg, MD 20877



## FLEX SPACE FOR LEASE

KENNETH FELLOWS  
kfellows@klnb.com  
301-222-0210

ROBERT PUGH  
rpugh@klnb.com  
301-222-0211

KEIRY MARTINEZ  
kmartinez@klnb.com  
703-334-5629

[klnb.com](http://klnb.com)

# GERMANTOWN



# GAITHERSBURG

SITE

# MARKET AERIAL

## GIRARD BUSINESS CENTER

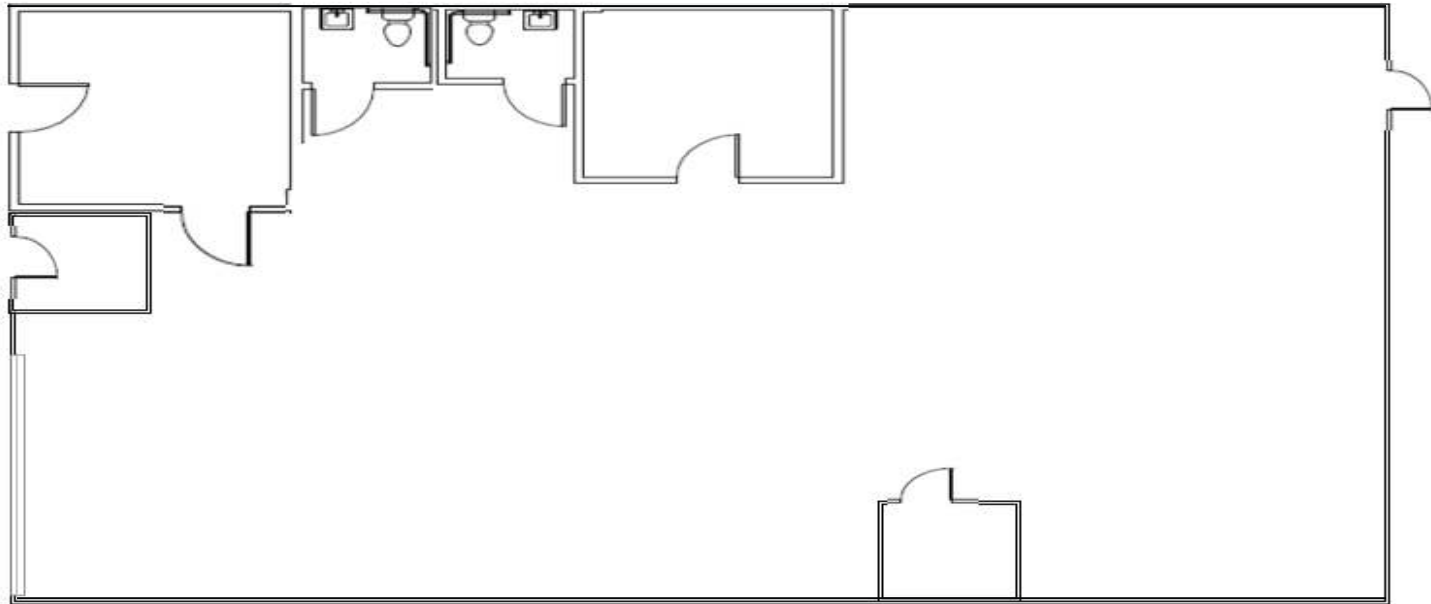
KENNETH FELLOWS  
 kfellows@klnb.com  
 301-222-0210

ROBERT PUGH  
 rpugh@klnb.com  
 301-222-0211

KEIRY MARTINEZ  
 kmartinez@klnb.com  
 703-334-5629



**SUITE 203**  
2,992 SF



**FLOOR PLAN**

**GIRARD BUSINESS CENTER**

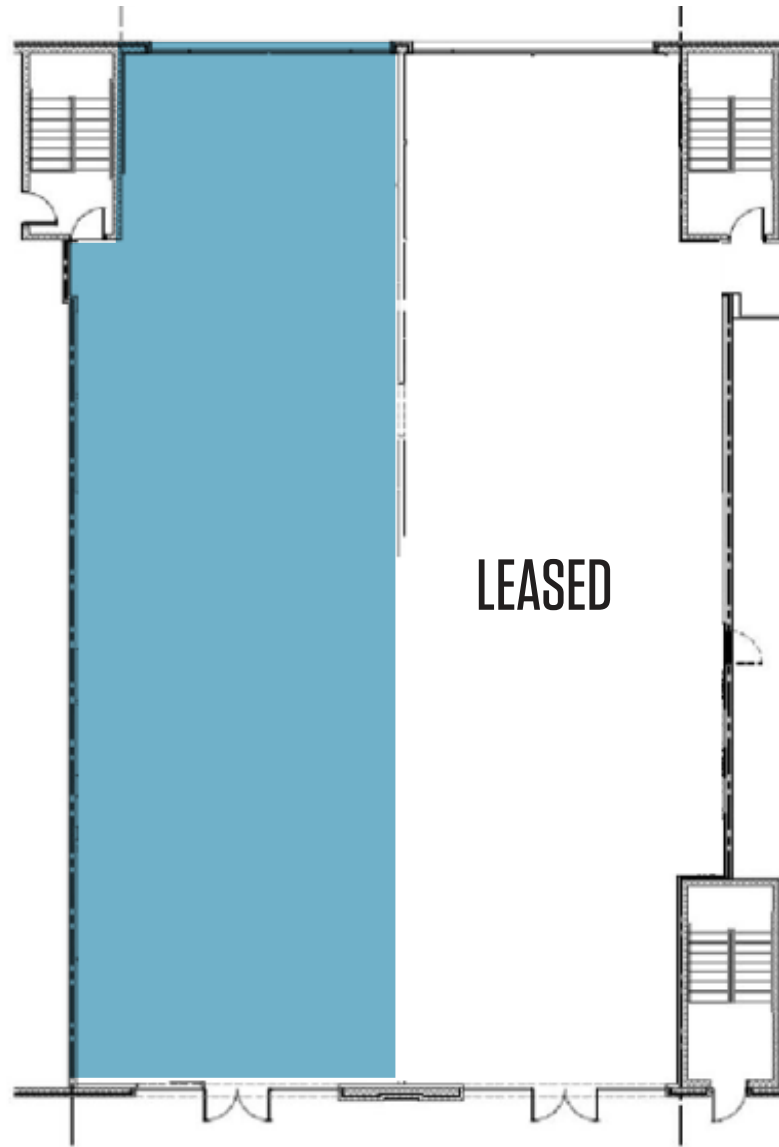
KENNETH FELLOWS  
kfellows@klnb.com  
301-222-0210

ROBERT PUGH  
rpugh@klnb.com  
301-222-0211

KEIRY MARTINEZ  
kmartinez@klnb.com  
703-334-5629



**SUITE 210**  
3,000 SF



**FLOOR PLAN**

## GIRARD BUSINESS CENTER

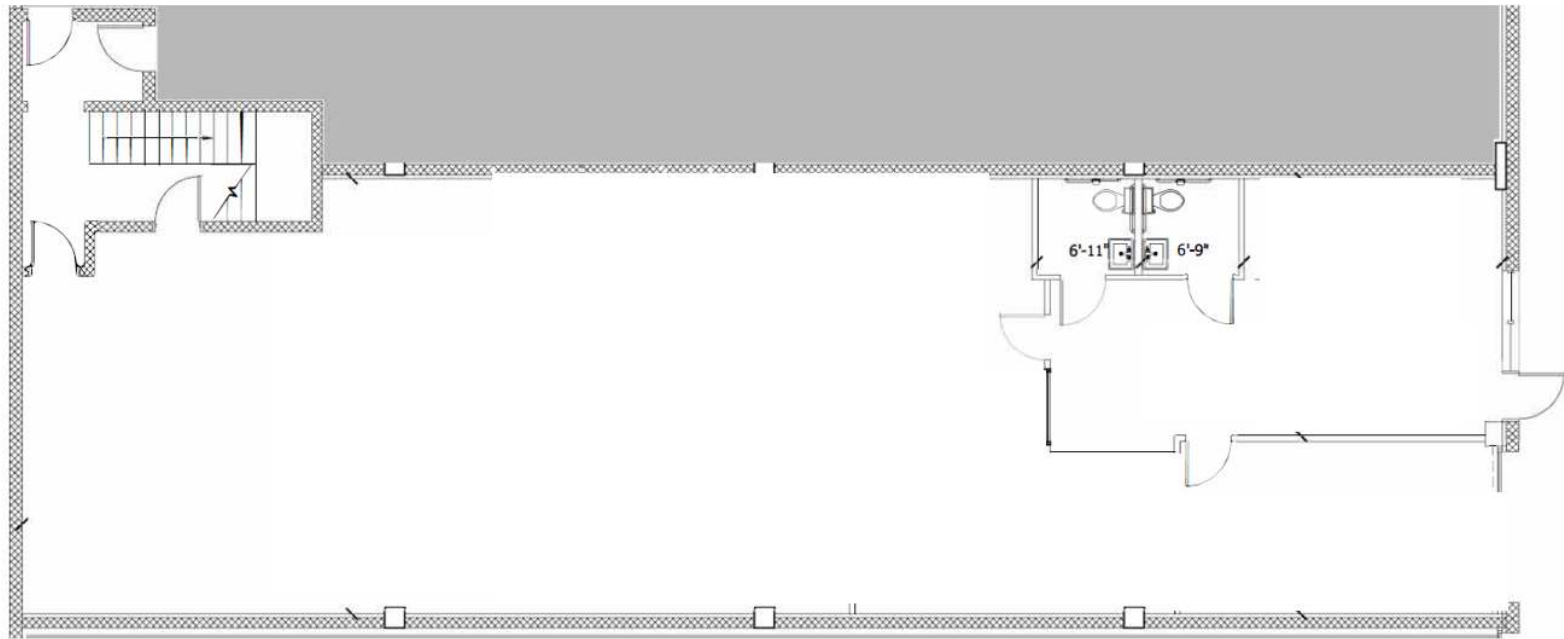
KENNETH FELLOWS  
kfellows@klnb.com  
301-222-0210

ROBERT PUGH  
rpugh@klnb.com  
301-222-0211

KEIRY MARTINEZ  
kmartinez@klnb.com  
703-334-5629

**klnb**

**SUITE D**  
3,000 SF



**FLOOR PLAN**

## GIRARD BUSINESS CENTER

KENNETH FELLOWS  
kfellows@klnb.com  
301-222-0210

ROBERT PUGH  
rpugh@klnb.com  
301-222-0211

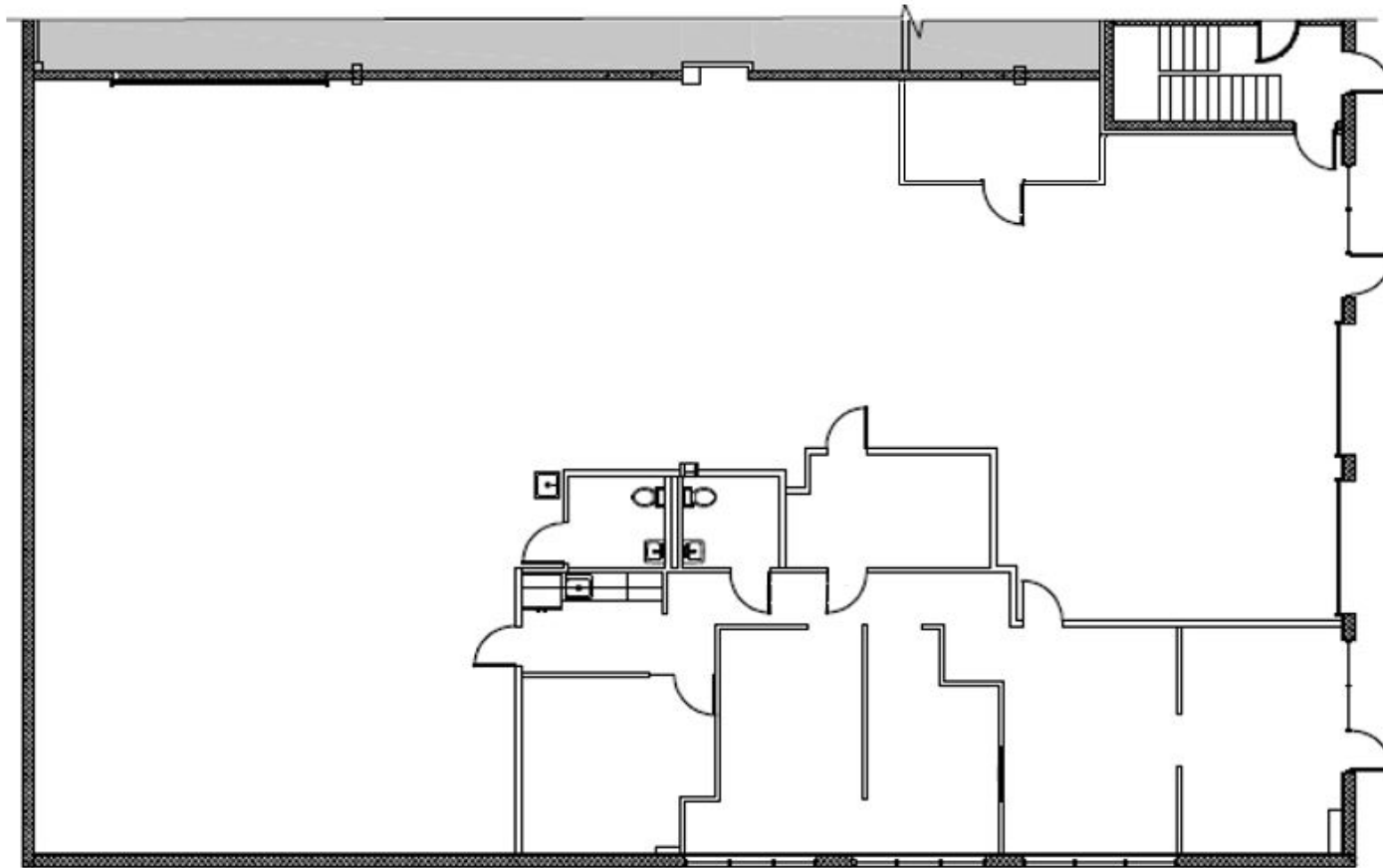
KEIRY MARTINEZ  
kmartinez@klnb.com  
703-334-5629

**klnb**

**SUITE J**

**6,000 SF**

AVAILABLE 1/1/25



**FLOOR PLAN**

**GIRARD BUSINESS CENTER**

KENNETH FELLOWS  
kfellows@klnb.com  
301-222-0210

ROBERT PUGH  
rpugh@klnb.com  
301-222-0211

KEIRY MARTINEZ  
kmartinez@klnb.com  
703-334-5629





## GIRARD BUSINESS CENTER

200-220 Girard Street, Gaithersburg, MD 20877  
504 E Diamond Ave, Gaithersburg, MD 20877

### CONTACT

KENNETH FELLOWS  
kfellows@klnb.com  
301-222-0210

ROBERT PUGH  
rpugh@klnb.com  
301-222-0211

KEIRY MARTINEZ  
kmartinez@klnb.com  
703-334-5629

2273 Research Blvd, Suite 150  
Rockville, MD 20850

**klnb.com**

VISIT PROPERTY WEBSITE



While we have no reason to doubt the accuracy of any of the information supplied, we cannot, and do not, guarantee its accuracy. All information should be independently verified prior to a purchase or lease of the property. We are not responsible for errors, omissions, misuse, or misinterpretation of information contained herein and make no warranty of any kind, express or implied, with respect to the property or any other matters.